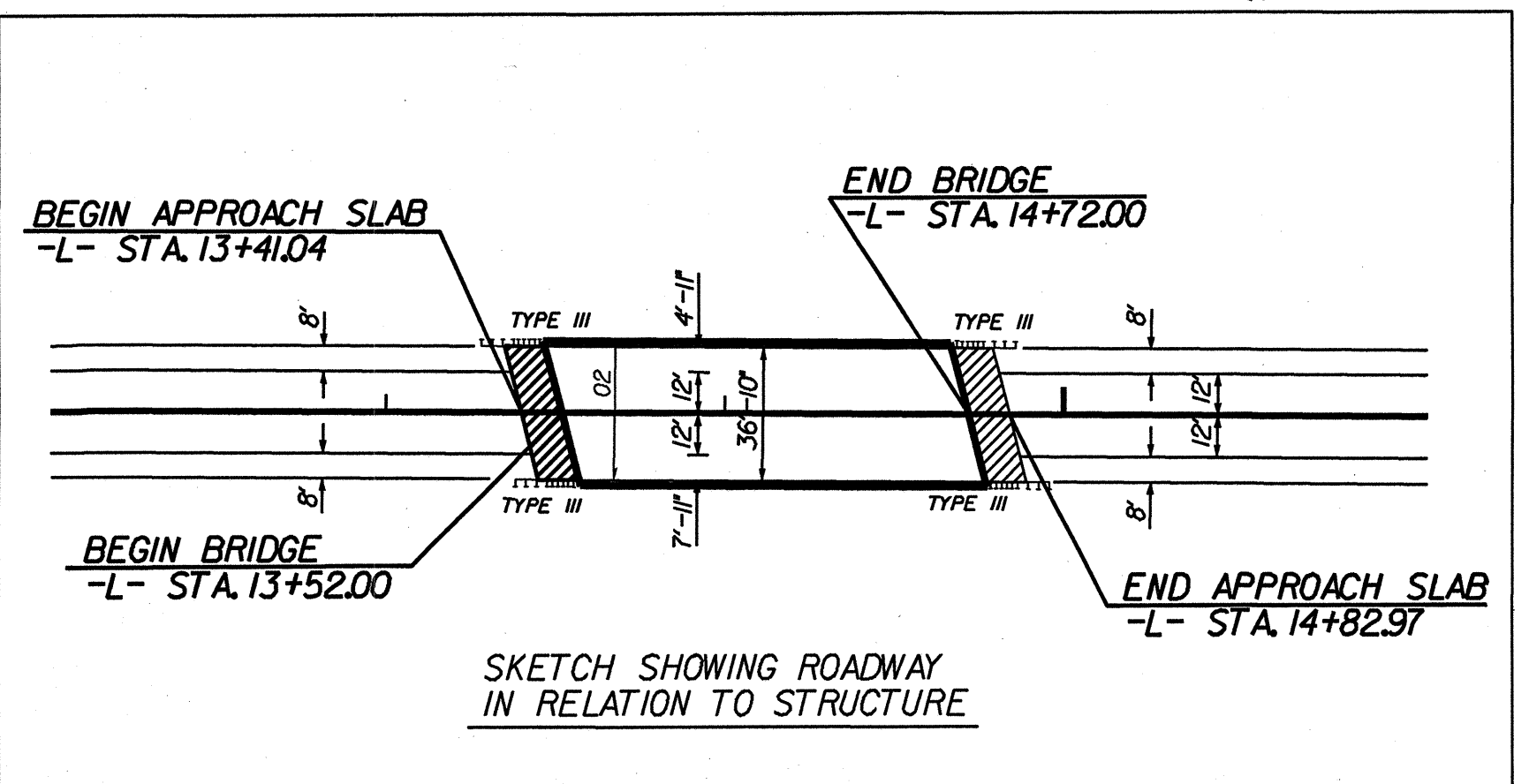
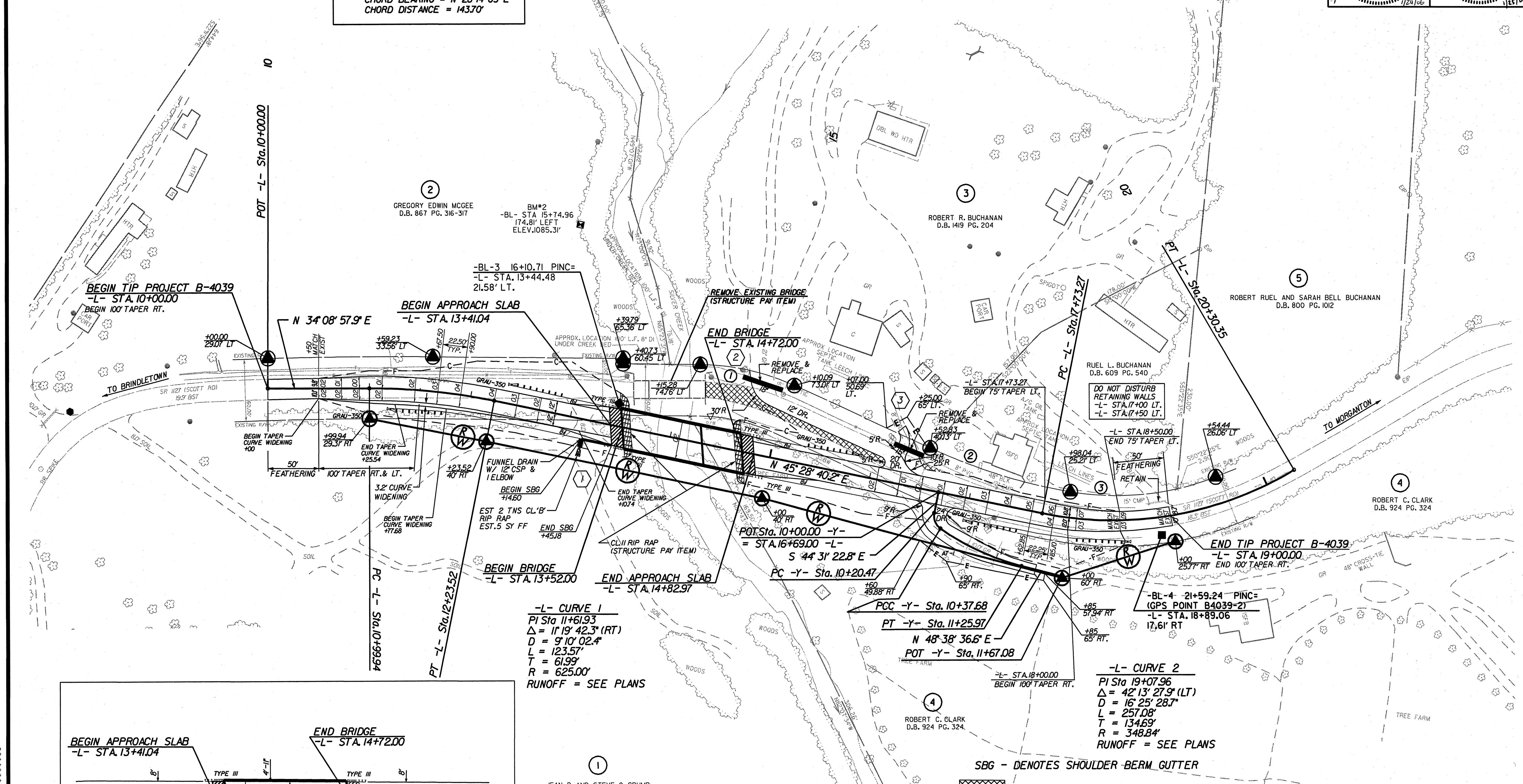
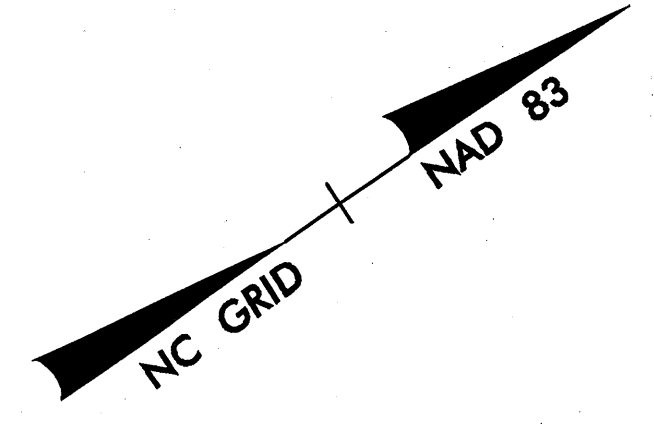


PROJECT REFERENCE NO. B-4039	SHEET NO. 4
RW SHEET NO.	
ROADWAY DESIGN ENGINEER NORTH CAROLINA PROFESSIONAL SEAL 27771 MATTHEW B. COPPLE	HYDRAULICS ENGINEER NORTH CAROLINA PROFESSIONAL SEAL 9334 HENRY WELLS JR.

- ① R = 229.63'
L = 95.52'
CHORD BEARING = N 46° 32' 07" E
CHORD DISTANCE = 94.83'
- ② R = 562.65'
L = 144.49'
CHORD BEARING = N 51° 05' 43" E
CHORD DISTANCE = 144.09'
- ③ R = 268.82'
L = 145.46'
CHORD BEARING = N 28° 14' 03" E
CHORD DISTANCE = 143.70'



10/26/98
 10
 100' TAPER RT. & LT.
 50' FEATHERING
 3.2' CURVE WIDENING
 BEGIN TAPER CURVE WIDENING
 END TAPER CURVE WIDENING
 FUNNEL DRAIN W/ 12" CSP & 1" ELBON
 EST. 2 TNS CL'B' RIP RAP EST. 5 SY FF
 END SBG
 CL II RIP RAP (STRUCTURE PAY ITEM)
 END TAPER CURVE WIDENING
 DO NOT DISTURB RETAINING WALLS
 -L- STA. 17+00 LT.
 -L- STA. 17+50 LT.
 FEATHERING RETAIN
 END 75' TAPER LT.
 END 75' TAPER LT.
 -L- STA. 18+50.00
 -L- STA. 18+89.06
 17.61' RT
 -L- STA. 18+00.00
 BEGIN 100' TAPER RT.
 -L- STA. 18+37.68
 -L- STA. 11+25.97
 N 48° 38' 36.6" E
 POT -Y- Sta. 11+67.08
 -L- STA. 18+00.00
 BEGIN 100' TAPER RT.
 -L- CURVE 2
 PI Sta 19+07.96
 $\Delta = 42' 13' 27.9''$ (LT)
 D = 16' 25' 28.7"
 L = 257.08'
 T = 134.69'
 R = 348.84'
 RUNOFF = SEE PLANS
 SUNGATE DESIGN GROUP, P.A.
 915 JONES FRANKLIN ROAD
 RALEIGH, NORTH CAROLINA 27609
 TEL. (919) 859-2400 FAX (919) 859-4258
 Ramey Kemp & Associates, Inc.
 Transportation Consulting Engineers
 4928-A Windy Hill Drive Raleigh, North Carolina 27609
 (919) 872-5105 fax (919) 878-5416