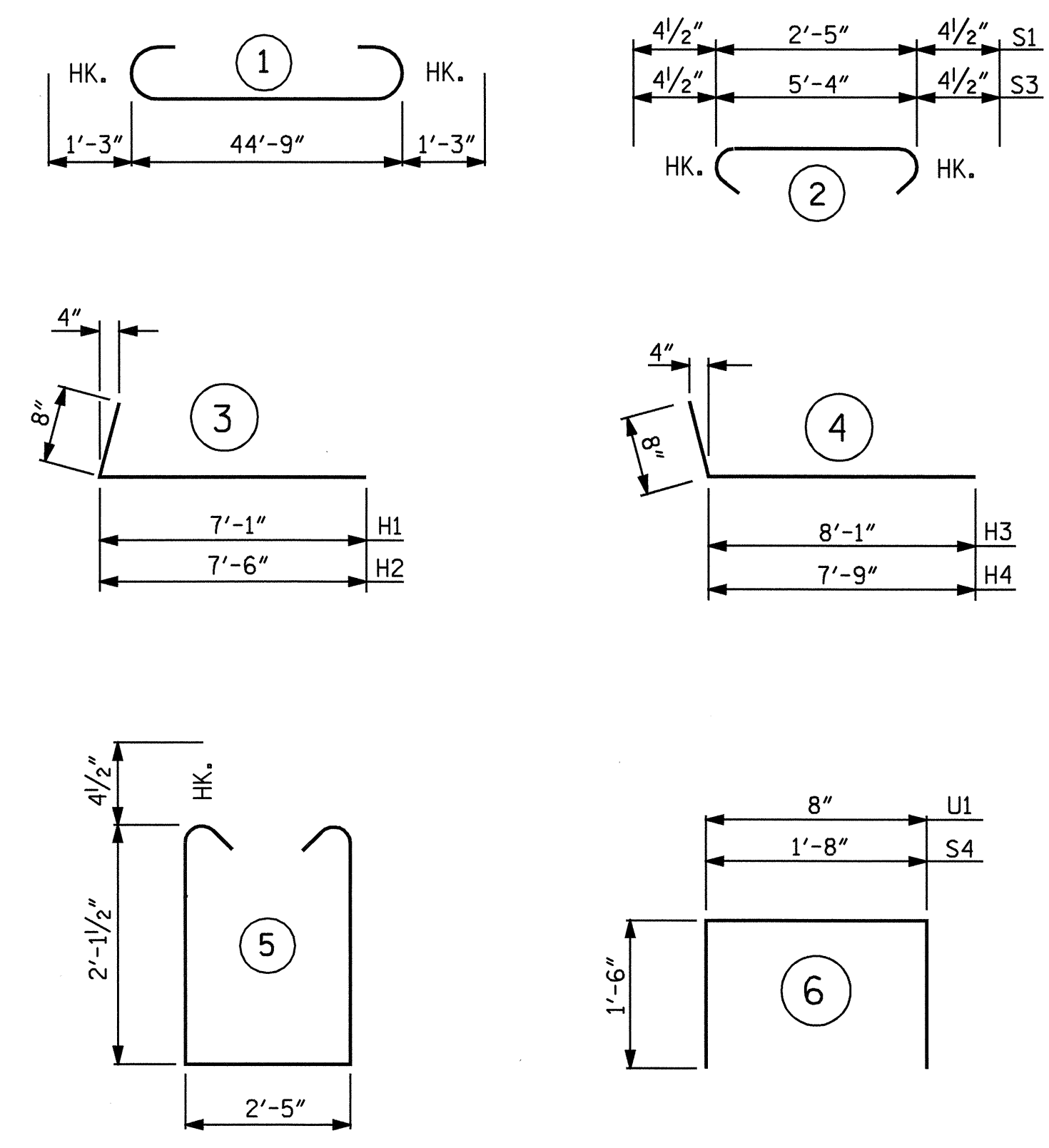


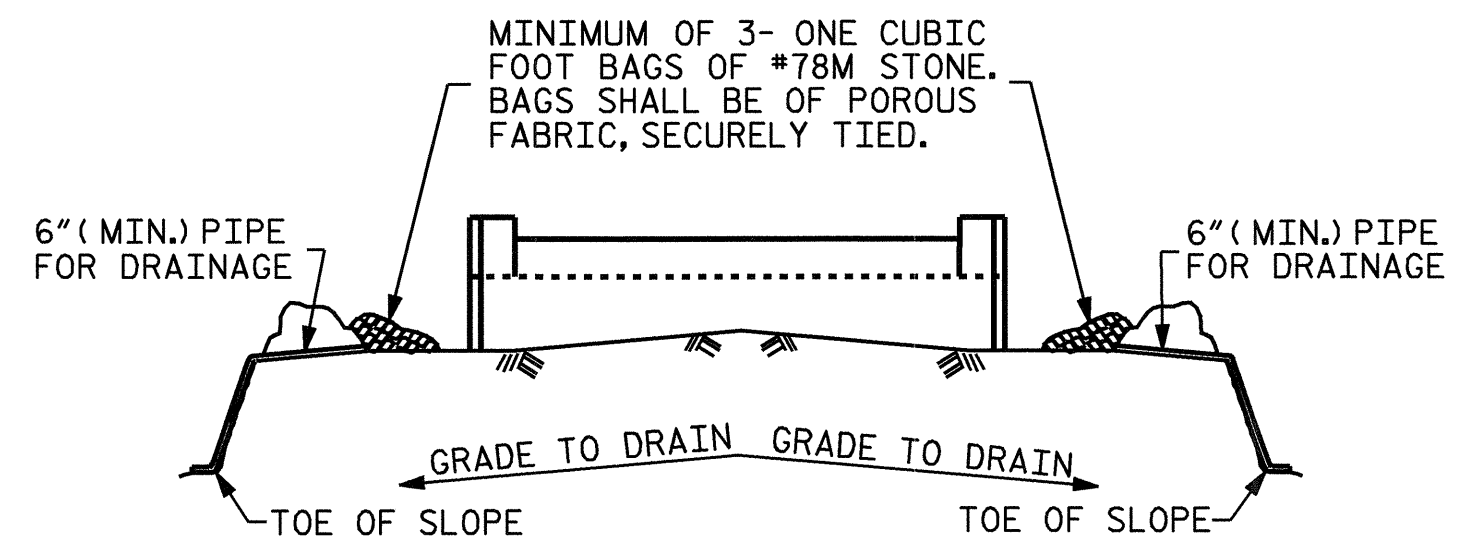
BAR TYPES



ALL BAR DIMENSIONS ARE OUT TO OUT.

BILL OF MATERIAL

END BENT No. 1					
BAR	NO.	SIZE	TYPE	LENGTH	WEIGHT
B1	8	9	1	47'-3"	1285
B2	8	4	STR	23'-8"	126
B3	10	6	STR	38'-6"	578
B4	78	6	STR	3'-3"	381
D1	22	8	STR	2'-3"	132
H1	8	4	3	7'-9"	41
H2	8	4	3	8'-2"	44
H3	8	4	4	8'-9"	47
H4	8	4	4	8'-5"	45
K1	8	4	STR	2'-11"	16
K2	12	4	STR	23'-8"	190
S1	43	4	2	3'-2"	91
S2	43	4	5	7'-5"	213
S3	78	4	2	6'-1"	317
S4	4	4	6	4'-8"	12
U1	39	4	6	3'-8"	96
V1	78	5	STR	4'-2"	339
V2	49	4	STR	5'-6"	180
REINFORCING STEEL					4133 LBS.
CLASS A CONCRETE BREAKDOWN					
POUR #1	FOOTING			17.6 C.Y.	
POUR #2	CAP & BOTTOM OF WINGS			12.7 C.Y.	
POUR #3	TOP OF WINGS & BACKWALL			5.4 C.Y.	
POUR #4	LATERAL GUIDE			0.1 C.Y.	
TOTAL CLASS A CONCRETE				35.8 C.Y.	

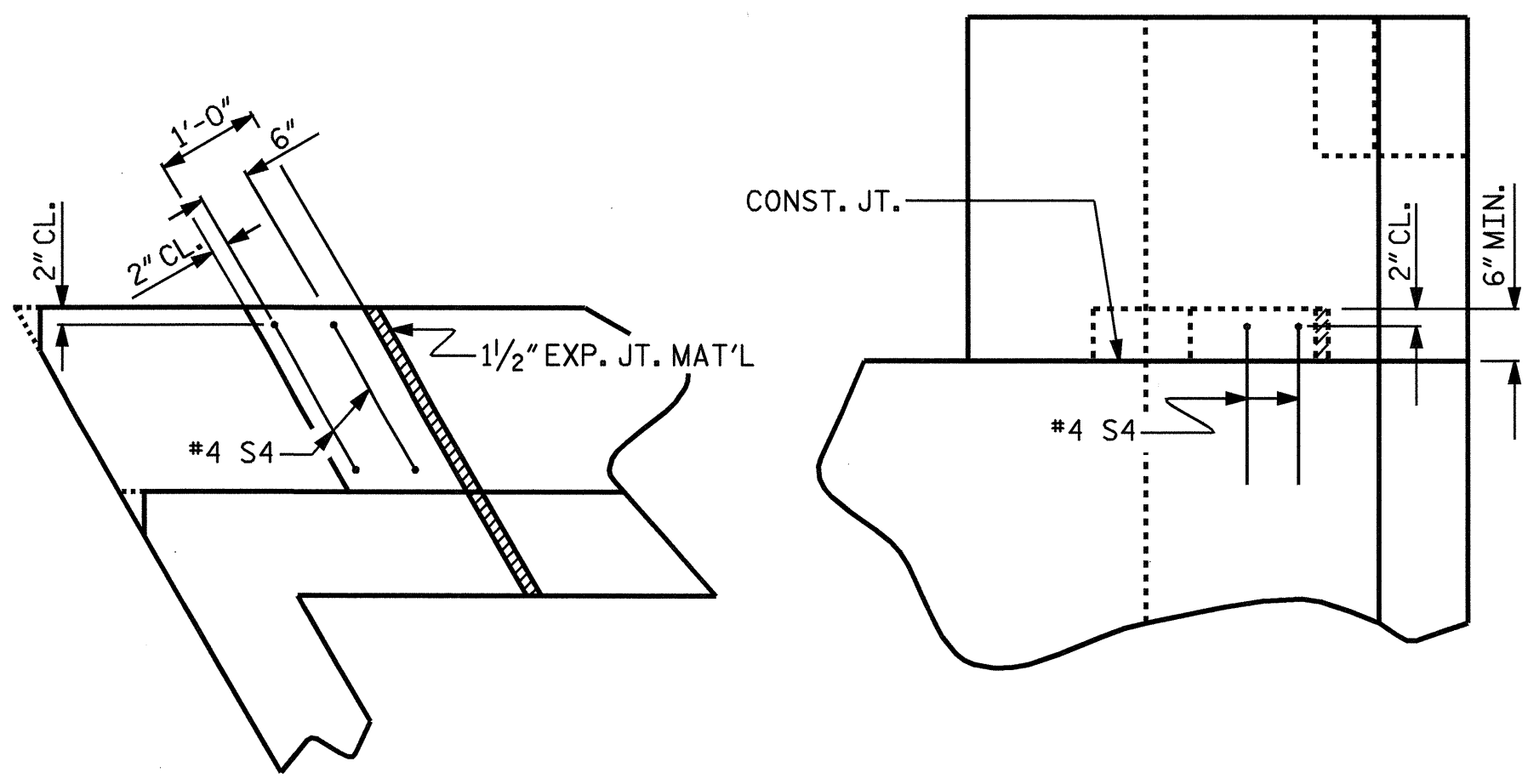


BAGGED STONE AND PIPE SHALL BE PLACED IMMEDIATELY AFTER COMPLETION OF END BENT EXCAVATION. PIPE MAY BE EITHER CONCRETE, CORRUGATED STEEL, CORRUGATED ALUMINUM ALLOY, OR CORRUGATED PLASTIC. PERFORATED PIPE WILL NOT BE ALLOWED.

BAGGED STONE SHALL REMAIN IN PLACE UNTIL THE ENGINEER DIRECTS THAT IT BE REMOVED. THE CONTRACTOR SHALL REMOVE AND DISPOSE OF SILT ACCUMULATIONS AT BAGGED STONE WHEN SO DIRECTED BY THE ENGINEER. BAGS SHALL BE REMOVED AND REPLACED WHENEVER THE ENGINEER DETERMINES THAT THEY HAVE DETERIORATED AND LOST THEIR EFFECTIVENESS.

NO SEPARATE PAYMENT WILL BE MADE FOR THIS WORK AND THE ENTIRE COST OF THIS WORK SHALL BE INCLUDED IN THE UNIT CONTRACT PRICE BID FOR THE SEVERAL PAY ITEMS.

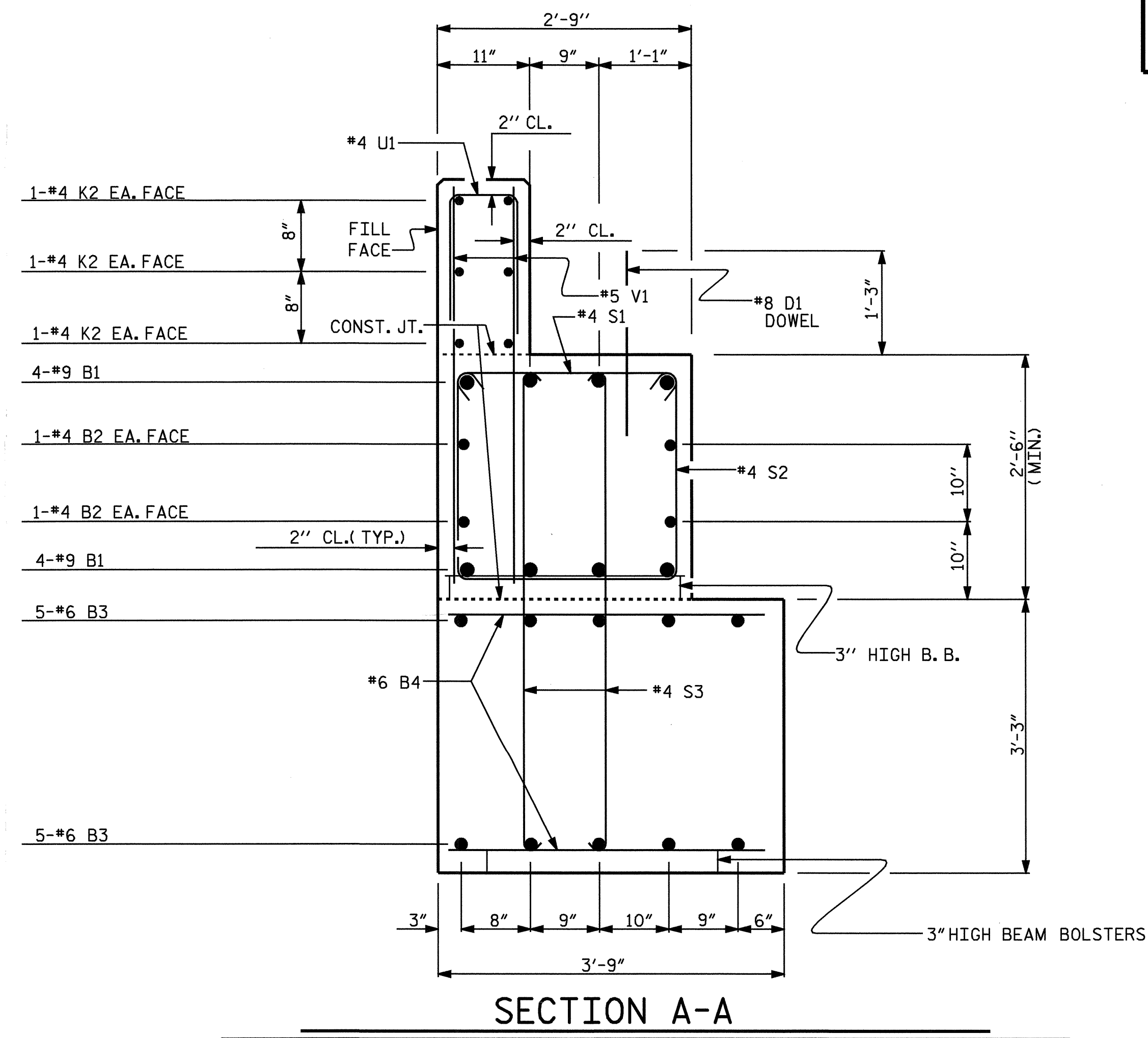
TEMPORARY DRAINAGE AT END BENT No. 1



PLAN ELEVATION

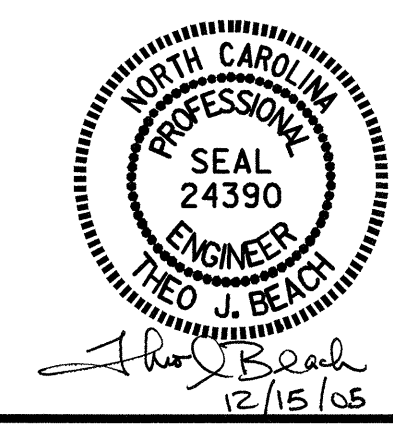
LATERAL GUIDE DETAIL

(LEFT LATERAL GUIDE SHOWN, RIGHT LATERAL GUIDE SIMILAR)



SECTION A-A

DRAWN BY: N. PIERCE DATE: 6/05
 CHECKED BY: S. B. WILLIAMS DATE: 8/05



PROJECT NO. B-4007
 ALLEGHANY COUNTY
 STATION: 17+03.50 -L-
 SHEET 3 OF 3

REVISIONS						SHEET NO.
NO.	BY:	DATE:	NO.	BY:	DATE:	S-13
1			3			TOTAL SHEETS
2			4			23

STATE OF NORTH CAROLINA
 DEPARTMENT OF TRANSPORTATION
 RALEIGH
 SUBSTRUCTURE
 END BENT No. 1