

# SITE PHOTOGRAPHS

NCDOT PROJECT NO. 33375.1.1 (B-4007)

Detour Bridge over Crab Creek on NC 18

ALLEGHANY COUNTY, NORTH CAROLINA



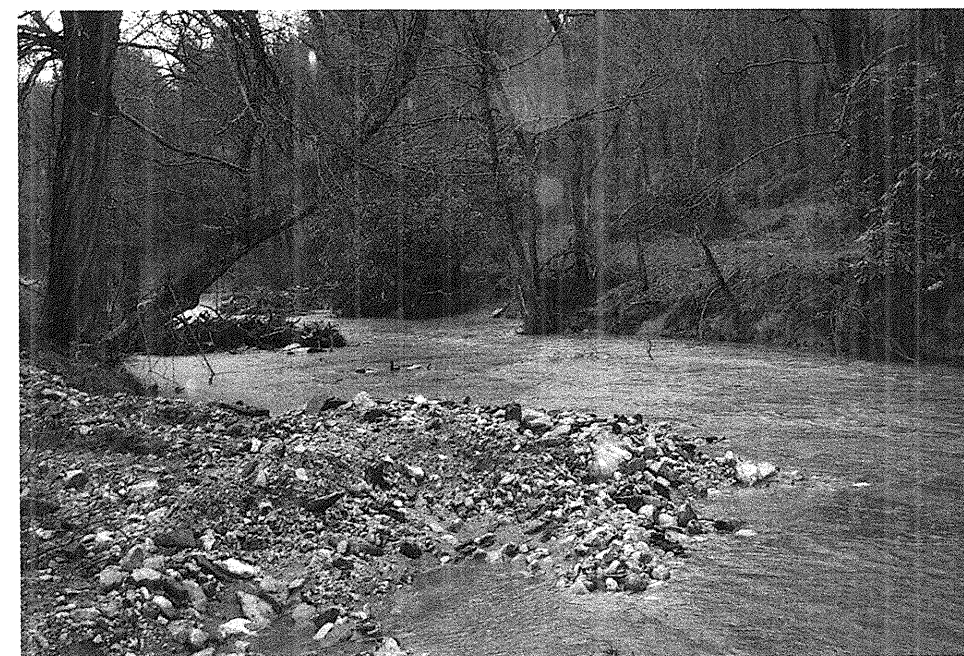
VIEW LOOKING NORTH ALONG END BENT - 1



VIEW LOOKING EAST ALONG CENTERLINE -DET-



VIEW LOOKING NORTH ALONG END BENT -2



VIEW LOOKING UPSTREAM OF CRAB CREEK -DET-