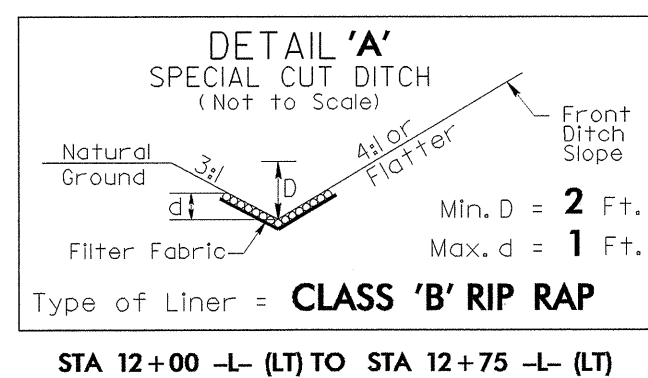


8/17/99

WATER LINE IS OWNED BY HOKE COUNTY.



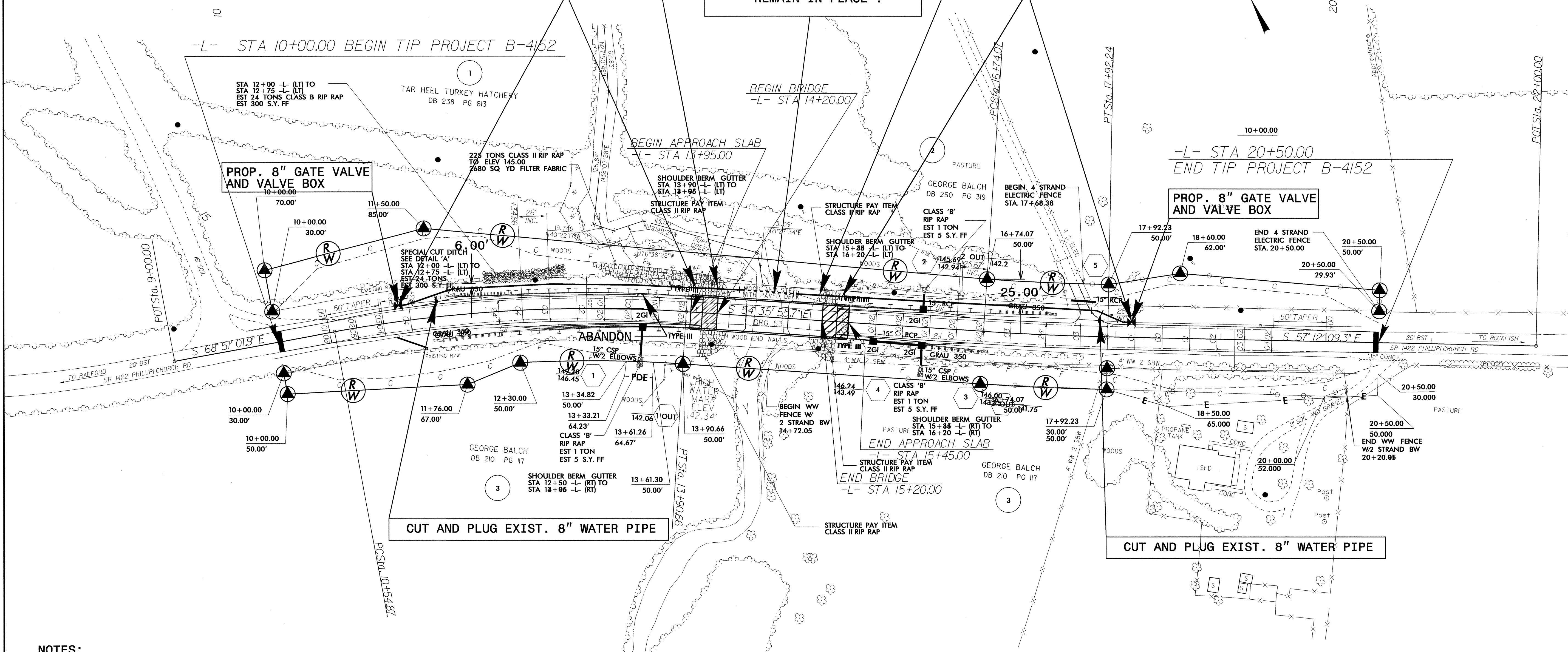
PROP. 572' OF 8" PVC WATER PIPE, SDR 21,  
200# WP  
4-22 1/2° D.I. BENDS  
2-8" GATE VALVE AND VALVE BOX, 200# WP  
MAKE CONNECTION USING NECESSARY FITTINGS

PROP. 80' OF 8" D.I.R.J. WATER PIPE,  
PC 350, MAKE CONNECTION USING NECESSARY  
FITTINGS

44' OF EXISTING 8" D.I.R.J.  
WATER PIPE UNDER CREEK TO  
REMAIN IN PLACE .

PROJECT REFERENCE NO.	SHEET NO.
B-4152	UC-2
DESIGNED BY: DWP	
DRAWN BY: DWP	
CHECKED BY: GYS	
APPROVED BY: GYS	
REVISED:	
NORTH CAROLINA DEPARTMENT OF TRANSPORTATION	
PROJECT SERVICES UNIT PHONE: (919) 250-4128 FAX: (919) 250-4119	
UTILITY CONSTRUCTION PLANS ONLY	

# UTILITY CONSTRUCTION



### NOTES:

- CONTRACTOR SHALL CUT IN THE (2) 8" GATE VALVES AND VALVE BOXES PRIOR TO INSTALLATION OF WATER LINE TO AVOID SERVICE INTERRUPTIONS AND MINIMIZE DOWN TIME DURING TIE-IN, AS SHOWN ABOVE. THE CONTRACTOR SHALL RESTRAIN THE PROPOSED GATE VALVES TO THE EXISTING PVC WATER LINE, AS DETAILED. THE CONTRACTOR SHALL COMPLETE THE (2) GATE VALVE INSTALLATIONS IN THE DESIGNATED 4-HOUR SHUT DOWN TIME, AS STATED IN THE SPECIFICATIONS. THIS PROCEDURE SHALL BE CONSIDERED INCIDENTAL TO THE PROPOSED 8" GATE VALVE INSTALLION.

### CURVE DATA

PI Sta 12+23.64	PI Sta 17+33.16
$\Delta = 14' 15" 05.8" (RT)$	$\Delta = 14' 15" 05.8" (LT)$
$D = 4' 14" 38.8"$	$D = 2' 12" 13.3"$
$L = 335.87'$	$L = 118.16'$
$T = 168.72'$	$T = 59.09'$
$R = 1,350.01'$	$R = 2,599.98'$
$SE = 04' L = 335.80'$	$SE = 03' L = 118.16'$
$RO = 104' T = 168.77'$	$RO = 78' T = 59.09'$
$R = 1,350.01'$	$R = 2,599.98'$

SEE SHEET 5 FOR -L- PROFILE  
SEE SHEET S-? THRU S-? FOR STRUCTURE PLANS