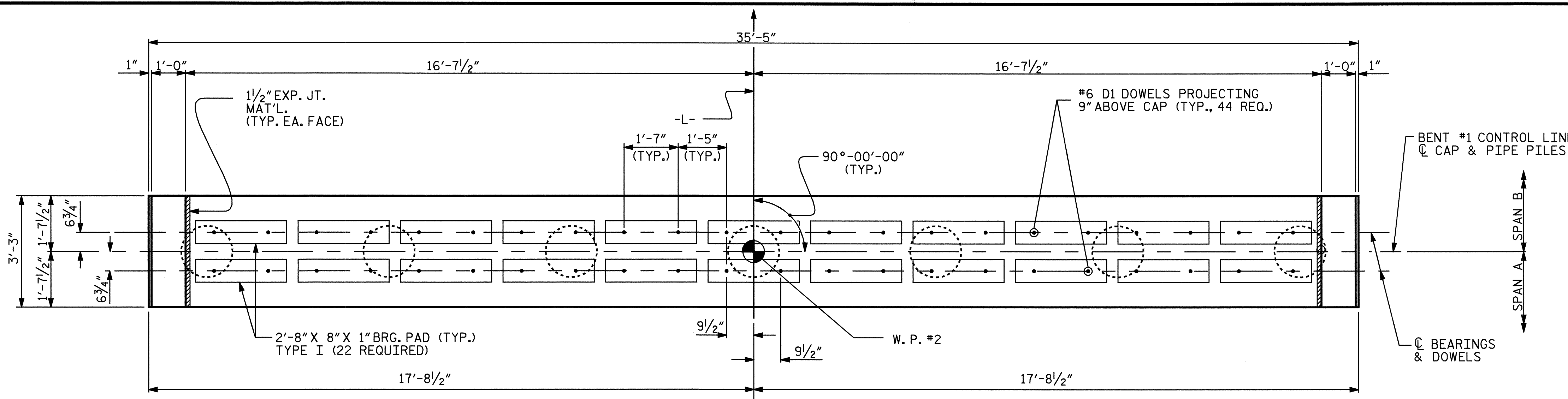
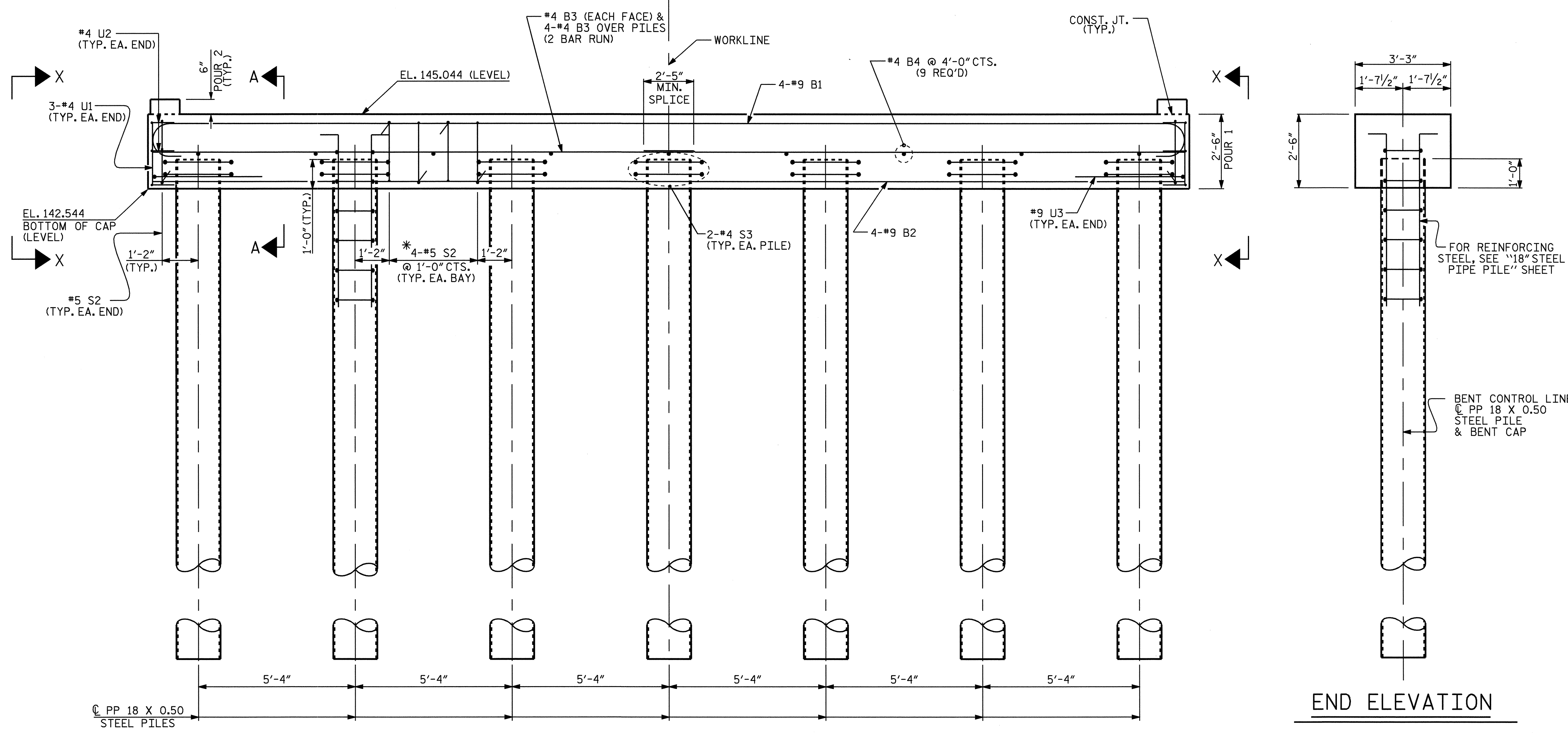


**NOTES**

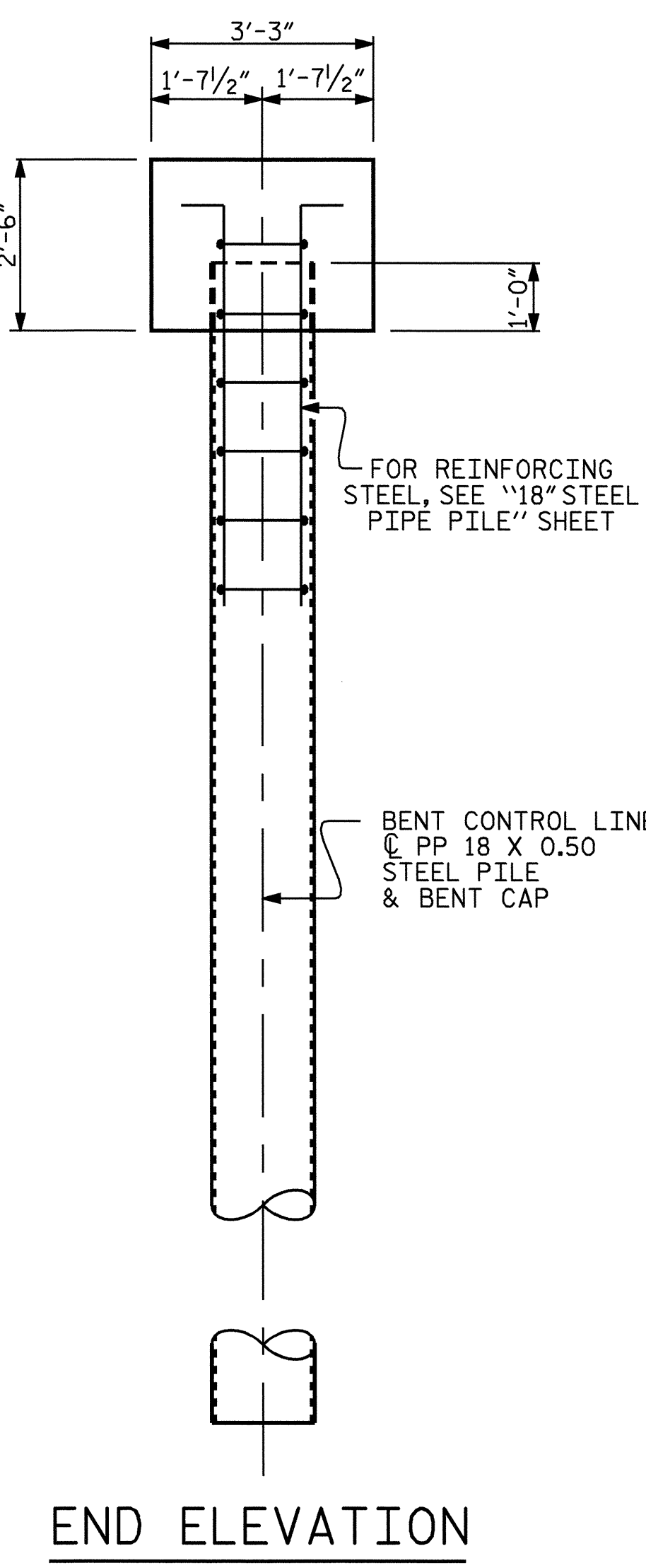
STIRRUPS IN CAP MAY BE SHIFTED AS NECESSARY TO CLEAR ANCHOR BOLTS.  
 FOR REINFORCING STEEL IN PIPE PILES, SEE "18" STEEL PIPE PILE " SHEET.  
 LATERAL GUIDES AT THE END OF CAP ARE NOT TO BE POURED UNTIL AFTER CORED SLAB UNITS ARE IN PLACE.  
 \* INVERT ALTERNATE STIRRUPS.



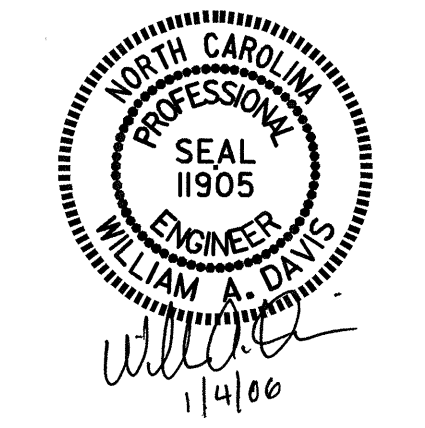
**PLAN**



**ELEVATION**



**END ELEVATION**



PROJECT NO. B-4152  
HOKE COUNTY  
 STATION: 14+70.00 -L-

SHEET 1 OF 2

STATE OF NORTH CAROLINA  
 DEPARTMENT OF TRANSPORTATION  
 RALEIGH

**SUBSTRUCTURE  
 BENT #1**

REVISIONS						SHEET NO.
NO.	BY:	DATE:	NO.	BY:	DATE:	S-16
1			3			TOTAL SHEETS
2			4			26

DRAWN BY: J. G. KHARVA DATE: 4/05/05  
 CHECKED BY: W. F. PARKER DATE: 06/29/05