

TWO LANE, TWO WAY WORK ZONE (L-LINES)

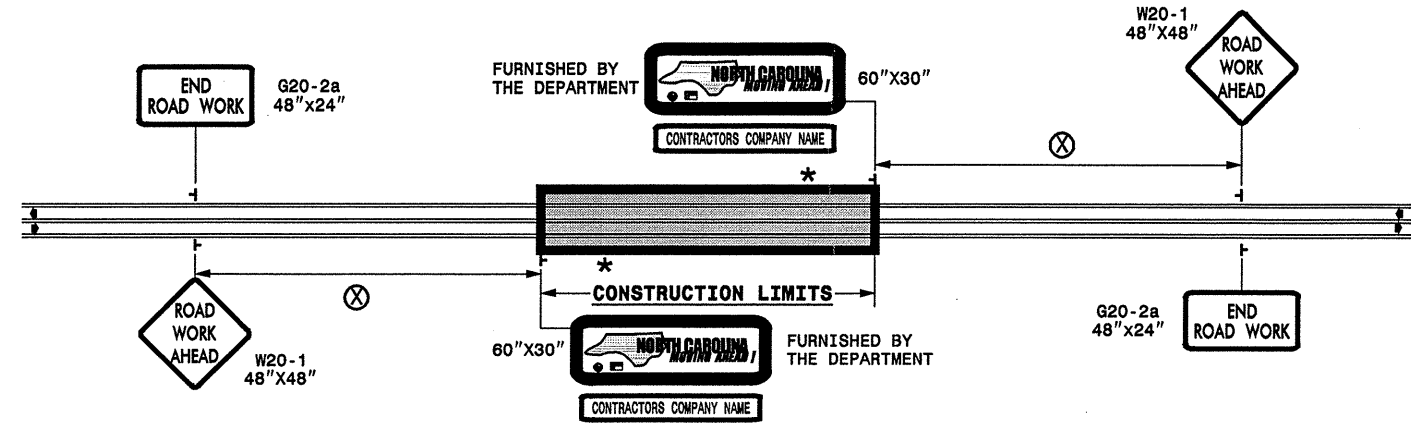
WBS Elements: 5CR.10351.5,
5CR.20351.5, 5CR.303506.5 & 37671

PROJ. REFERENCE NO. See to the left	SHEET NO. NCMA-1
--	---------------------


POSTED SPEED LIMIT (M.P.H.)	RECOMMENDED MINIMUM SIGN SPACING
P.S.L. ≤ 50	⊗
P.S.L. ≥ 55	350'
	500'

*** ROAD WORK NEXT XX MILES** G20-1A, 60"x24"

THIS SIGN TO BE USED ON PROJECTS LONGER THAN 2 MILES
THE NUMBER DISPLAYED ON THE SIGN IS TO BE A WHOLE NUMBER ROUNDED UP TO THE NEXT MILE
IT'S TO BE LOCATED 1,500 FEET INSIDE OF THE CONSTRUCTION LIMITS



FURNISHED BY THE DEPARTMENT



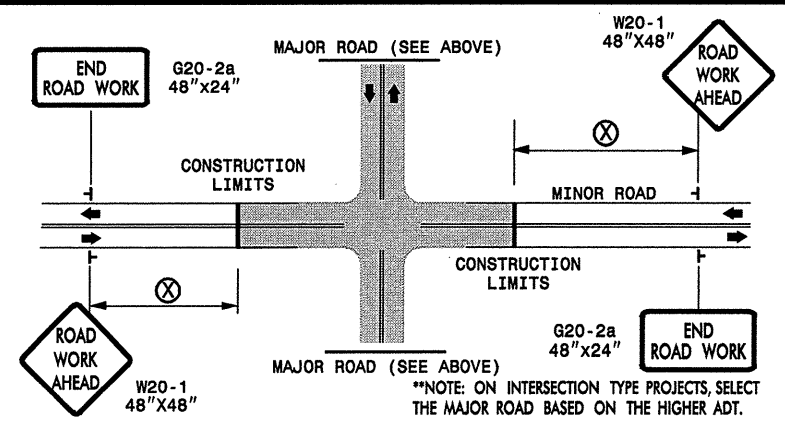
60"x30"

CONTRACTORS COMPANY NAME

60" Max. X 12"

STATE OF NORTH CAROLINA
DEPT. OF TRANSPORTATION
DIVISION OF HIGHWAYS
RALEIGH, N.C.

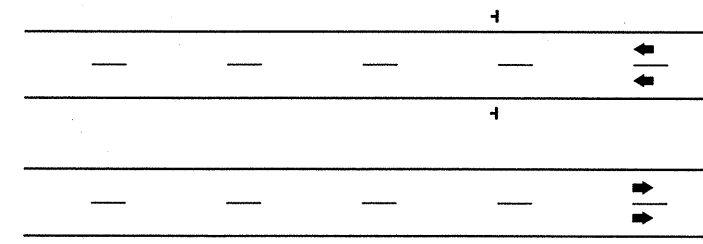
INTERSECTIONS (-Y- LINES)



FREEWAYS / INTERSTATES

DUAL MOUNT "ROAD WORK AHEAD" SIGNS 1,000' IN ADVANCE OF PROJECT LIMITS

DUAL MOUNT "MOVING AHEAD" SIGNS 500' IN ADVANCE OF PROJECT LIMITS



GENERAL NOTES

- USE FLUORESCENT ORANGE SHEETING (TYPE VII OR HIGHER) ON ALL ADVANCED WORK ZONE SIGNS.
- DO NOT INSTALL ADVANCE WARNING SIGNS MORE THAN 3 DAYS PRIOR TO BEGINNING OF WORK.
- SIGNS SHOWN ARE REQUIRED FOR WORK ZONES THAT WILL REMAIN IN EFFECT OVERNIGHT. FOR SHORT-TERM DAILY MAINTENANCE TYPE OPERATIONS, THIS SIGNING APPLICATION IS OPTIONAL; MAY USE ONLY APPLICABLE ROADWAY STANDARD DRAWINGS INSTEAD. HOWEVER, IF THIS SIGNING APPLICATION IS USED, SIGNS MAY BE PORTABLE MOUNTED. USE PORTABLE WORK ZONE SIGNS ONLY WITH PORTABLE WORK ZONE SIGN STANDS SPECIFICALLY DESIGNED FOR ONE ANOTHER. PORTABLE WORK ZONE SIGNS MAY BE ROLL UP OR APPROVED COMPOSITE.
- ALL SIGN SPACING DIMENSIONS ARE APPROXIMATE, FIELD ADJUST AS NECESSARY OR AS DIRECTED.
- USE 3LB STEEL U-CHANNEL POST OR 4" X 4" WOOD POST FOR ALL WORK ZONE SIGNS. 3LB STEEL U-CHANNEL POSTS MUST MEET THE REQUIREMENTS OF STANDARD SPECIFICATION SECTION 1094-1(B), MAY BE GALVANIZED STEEL, OR MAY BE PAINTED GREEN BY THE POST MANUFACTURER. SQUARE STEEL TUBING POSTS HAVING EQUIVALENT STRENGTH OF THE 3 LB STEEL U-CHANNEL POST ARE ALSO ACCEPTABLE FOR USE. ERECT SIGNS PER ROADWAY STANDARD DRAWING 1110.01. PAYMENT FOR WOOD POSTS, 3LB STEEL U-CHANNEL AND SQUARE STEEL TUBING POSTS WITH SIGNS WILL BE MADE ACCORDING TO STANDARD SPECIFICATION "WORK ZONE SIGNS" SECTION 1110.
- WHEN NECESSARY, USE SPLICING IN ACCORDANCE WITH ROADWAY STANDARD DRAWING NO. 1110.01. REMOVE ENTIRE POST WHEN REMOVING SIGNS WITH SPLICED POSTS.
- DO NOT BACK BRACE SIGN SUPPORTS.


LEGEND

└ STATIONARY SIGN

◀ DIRECTION OF TRAFFIC FLOW

DETAIL DRAWING FOR ADVANCE
WARNING WORK ZONE SIGNS

SHEET 1 OF 1

APPROVED: _____	DATE: _____	ADVANCE WARNING WORK ZONE SIGNS FOR "MOVING AHEAD"	
SEAL	SCALE: NONE		REVISIONS
	DATE: 07/03		11/04
	DWG. BY: JSK		12/04
	DESIGN BY: JSK		
	REVIEWED BY: SK		