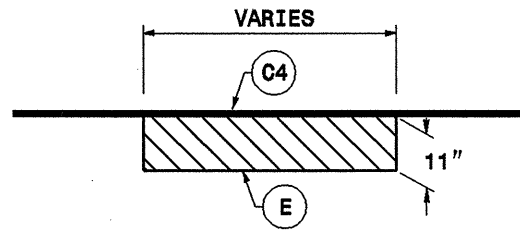


NOTE: STA 0+00 STARTS AT NEW PAVEMENT JOINT WEST OF (SR1158) HUFFMAN MILL RD.

PROJECT NO.	SHEET NO.	TOTAL SHEETS
38183.3.1(1-4713)	7	8

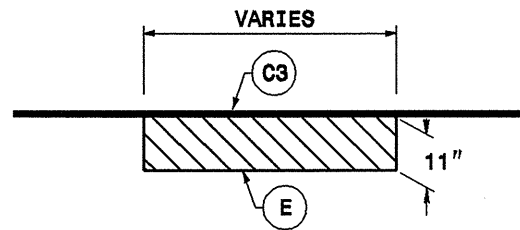
**FULL DEPTH PATCHING
TYPICAL 1**



DIG OUT ASPHALT PAVEMENT 11" IN DEPTH AT LOCATIONS AS DIRECTED BY THE ENGINEER.

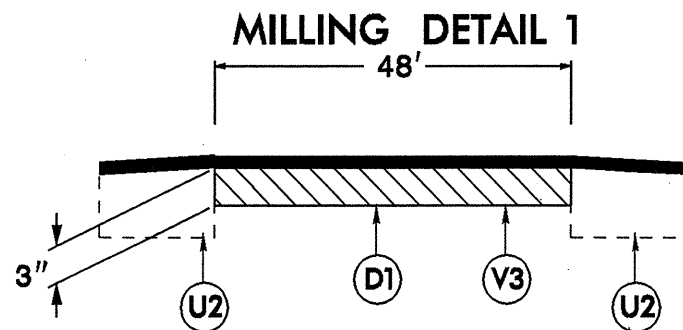
NOTE:
TO BE USED IN CONJUNCTION WITH
TS. NO. 3 ON MAP 14.

**FULL DEPTH PATCHING
TYPICAL 2**



DIG OUT ASPHALT PAVEMENT 11" IN DEPTH AT LOCATIONS AS DIRECTED BY THE ENGINEER.

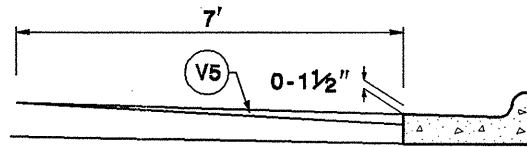
NOTE:
TO BE USED IN CONJUNCTION WITH
TS. NO. 8 ON MAP 8.



MILL EXISTING ASPHALT PAVEMENT 3" IN DEPTH, REPLACE WITH INTERMEDIATE COURSE I19.0D AS SHOWN ON TYPICALS

NOTE:
TO BE USED IN CONJUNCTION WITH
TS. NO. 2 ON MAP 1.

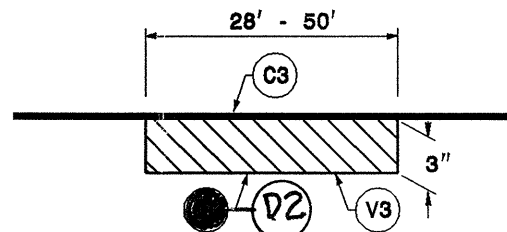
MILLING DETAIL 2



MILL EXISTING ASPHALT PAVEMENT 0-1 1/2" AT LOCATIONS AS DIRECTED BY THE ENGINEER

NOTE:
TO BE USED IN CONJUNCTION WITH
TS. NO. 2 ON MAP 1, TS. NO. 4 ON MAP 3
TS. NO. 4 ON MAP 11, TS. NO. 7 ON MAP 12.

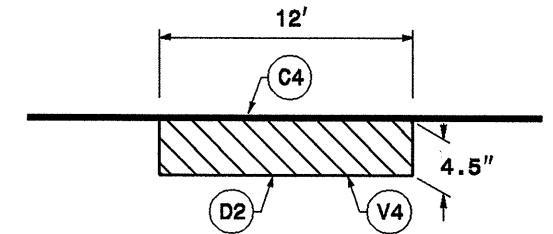
MILLING DETAIL 3



MILL EXISTING ASPHALT PAVEMENT 3" IN DEPTH, REPLACE WITH HEAVY DUTY BINDER AT LOCATIONS AS DIRECTED BY THE ENGINEER.

NOTE:
TO BE USED IN CONJUNCTION WITH
TS. NO. 3 ON MAP 8; TS. NO. 3,4,5 ON MAP 4.

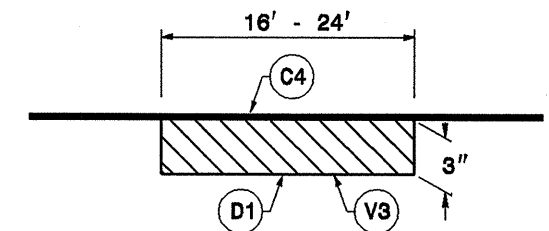
MILLING DETAIL 4



MILL EXISTING ASPHALT PAVEMENT 4.5" IN DEPTH AT LOCATIONS AS DIRECTED BY THE ENGINEER.

NOTE:
TO BE USED IN CONJUNCTION WITH
TS. NO. 5,6 ON MAP 11.

MILLING DETAIL 5



MILL EXISTING ASPHALT PAVEMENT 3" IN DEPTH AT LOCATIONS AS DIRECTED BY THE ENGINEER.

NOTE:
TO BE USED IN CONJUNCTION WITH
TS. NO. 3 ON MAP 15.

MILLING SCHEDULE

V1	MILLING BITUMINOUS PAVEMENT 1 1/2" DEPTH.
V2	MILLING BITUMINOUS PAVEMENT 2" DEPTH.
V3	MILLING BITUMINOUS PAVEMENT 3" DEPTH.
V4	MILLING BITUMINOUS PAVEMENT 4 1/2" DEPTH.
V5	MILLING BITUMINOUS PAVEMENT 0 - 1 1/2" DEPTH.
V6	MILLING BITUMINOUS PAVEMENT 0 - 2" DEPTH.
V7	MILLING BITUMINOUS PAVEMENT 1 1/2 - 2" DEPTH.
V8	MILLING BITUMINOUS PAVEMENT 3 - 4 1/2" DEPTH.

PAVEMENT SCHEDULE

C1	PROP. APPROX. 2" ASPHALT. CONC. SURFACE COURSE, TYPE S9.5D, AT AN AVERAGE RATE OF 224 LBS. PER SQ. YD.		
C2	PROP. APPROX. 1 1/2" ASPHALT. CONC. SURFACE COURSE, TYPE S9.5D, AT AN AVERAGE RATE OF 168 LBS. PER SQ. YD.		
C3	PROP. APPROX. 2" ASPHALT. CONC. SURFACE COURSE, TYPE S9.5C, AT AN AVERAGE RATE OF 224 LBS. PER SQ. YD.		
C4	PROP. APPROX. 1 1/2" ASPHALT. CONC. SURFACE COURSE, TYPE S9.5C, AT AN AVERAGE RATE OF 168 LBS. PER SQ. YD.		
D1	PROP. APPROX. 3" ASPHALT. CONC. INTERMEDIATE COURSE, TYPE I19.0D, AT AN AVERAGE RATE OF 342 LBS. PER SQ. YD.		
D2	PROP. APPROX. 3" ASPHALT. CONC. INTERMEDIATE COURSE, TYPE I19.0C, AT AN AVERAGE RATE OF 342 LBS. PER SQ. YD.		
D3	PROP. APPROX. 4 1/2" ASPHALT. CONC. INTERMEDIATE COURSE, TYPE I19.0C, AT AN AVERAGE RATE OF 513 LBS. PER SQ. YD.		
E	PROP. APPROX. 11" ASPHALT. CONC. BASE COURSE, TYPE B25.0C, AT AN AVERAGE RATE OF 627 LBS. PER SQ. YD. IN EACH OF TWO LAYERS		
R1	EXPRESS GUTTER	U1	EXISTING TRAVELWAY.
R2	2-6 CURB AND GUTTER	U2	EXISTING PAVED SHOULDER.
T	EARTH MATERIAL		

23-DEC-2004 09:34 Projects\Division of Moving Ahead\38183.3.1\1-4713-Typicals.dgn dshuller AT DS214566