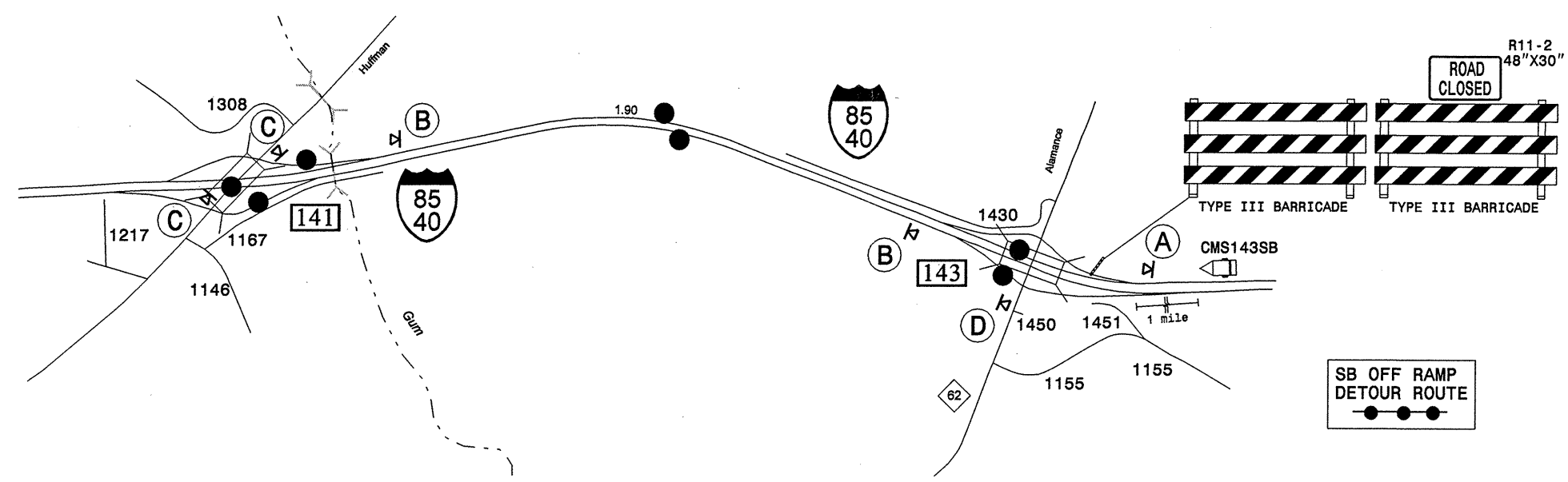


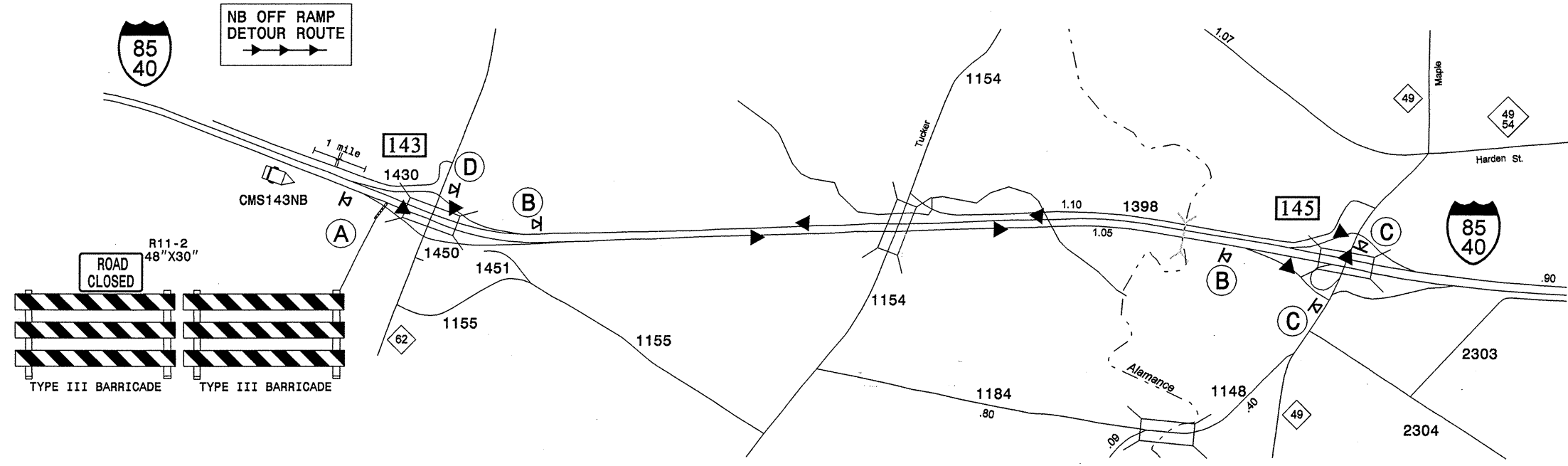
Exit 143 [I-85 SB Off Ramp for NC 62]



- Note:
1. Close only one I-85 Offramp at a time.
 2. Using Roadway Standard Drawings and Intermediate Time Restrictions, place the appropriate signs and traffic control devices, close the I-85 Offramp as agreed upon with the Engineer, and begin work.
 3. Complete all work and remove all signs and traffic control devices.

A DETOUR M4-8 24" X 12" M6-3 21" X 15"	B DETOUR M4-8 24" X 12" M6-2 21" X 15"
C DETOUR M4-8 24" X 12" M6-1 L 21" X 15"	D END DETOUR M4-8A 24" X 18"

Exit 143 [I-85 NB Off Ramp for NC 62]



Note: Changeable Message Signs (CMS) shall be used in combination with portable detour route signs.

	Changeable Message Signs Messages For Closure of Exit 143 Offramps on I-85 Northbound and Southbound	
	MESSAGE 1	MESSAGE 2
CMS143NB ROAD CLOSURE	EXIT 143 CLOSED	DETOUR EXIT 145
CMS143SB ROAD CLOSURE	EXIT 143 CLOSED	DETOUR EXIT 141

APPROVED: _____ DATE: _____

SEAL

Exit 143 Off Ramps (NC 62)

SCALE: NONE		REVISIONS
DATE: 09-05		
DWG. BY: MMM		
DESIGN BY: JAP		
REVIEWED BY: PS		

07-OCT-2005 10:25
 C:\DOT\OFFSHOULDER\GROUPS-WZ\TCC\design\group4\resurfacing\div07\I-4713\1021505\14713detour\14713-tc-tcp-detour.eng.dgn
 desymore AT WZTCC06421