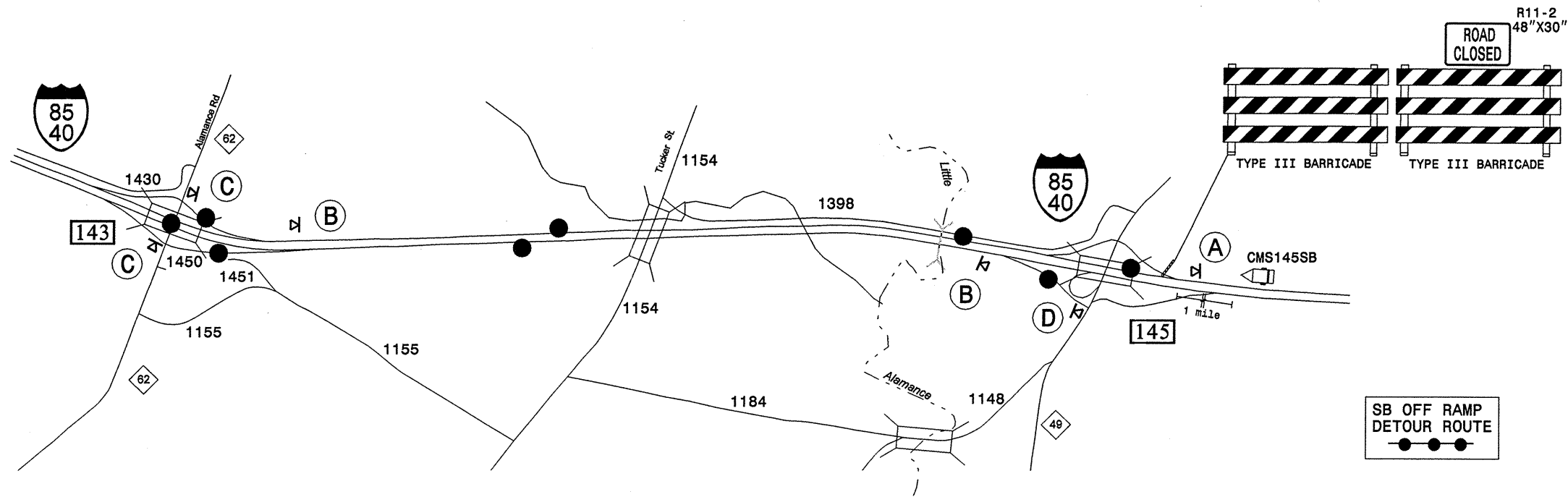


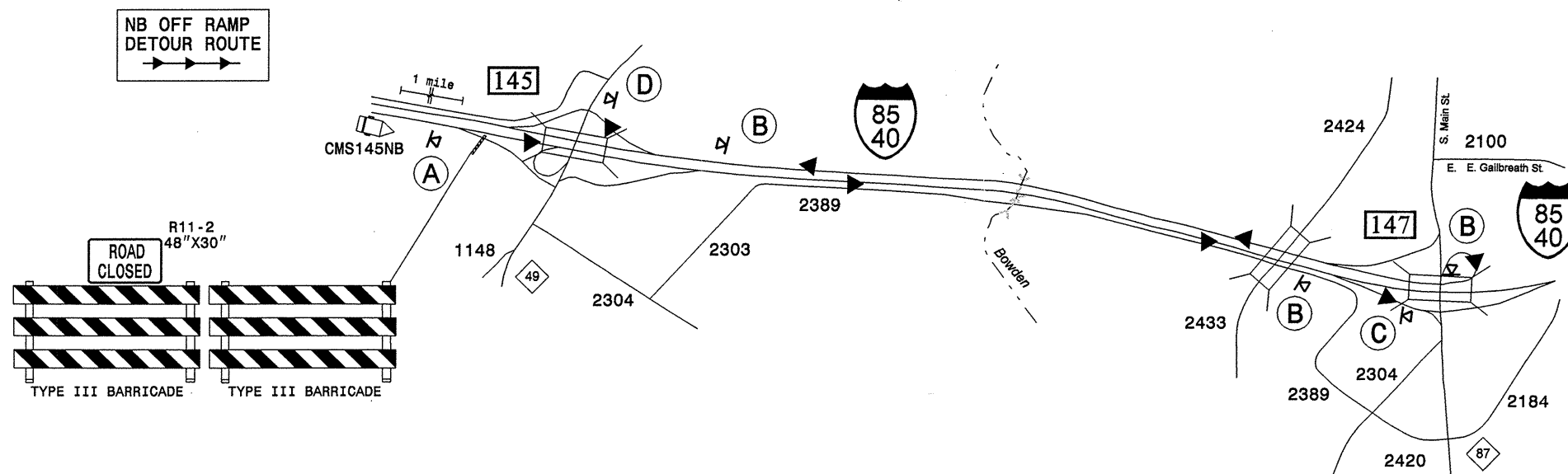
Exit 145 [I-85 SB Off Ramp for NC 49]



- Note:
1. Close only one I-85 Offramp at a time.
 2. Using Roadway Standard Drawings and Intermediate Time Restrictions, place the appropriate signs and traffic control devices, close the I-85 Offramp as agreed upon with the Engineer, and begin work.
 3. Complete all work and remove all signs and traffic control devices.

| | |
|--|--|
| A DETOUR M4-8 24" X 12" M1-5 M6-3 21" X 15" | B DETOUR M4-8 24" X 12" M1-5 M6-2 21" X 15" |
| C DETOUR M4-8 24" X 12" M1-5 M6-1 L 21" X 15" | D END DETOUR M4-8A 24" X 18" M1-5 |

Exit 145 [I-85 NB Off Ramp for NC 49]



Note: Changeable Message Signs (CMS) shall be used in combination with portable detour route signs.

| | Changeable Message Signs Messages For Closure of Exit 145 Offramps on I-85 Northbound and Southbound | |
|-----------------------|--|-----------------|
| | MESSAGE 1 | MESSAGE 2 |
| CMS145NB ROAD CLOSURE | EXIT 145 CLOSED | DETOUR EXIT 147 |
| CMS145SB ROAD CLOSURE | EXIT 145 CLOSED | DETOUR EXIT 143 |

APPROVED: _____ DATE: _____

SEAL

Exit 145 Off Ramps (NC 49)

| | | |
|-----------------|--|-----------|
| SCALE: NONE | | REVISIONS |
| DATE: 10-05 | | |
| DWG. BY: MMM | | |
| DESIGN BY: JPG | | |
| REVIEWED BY: PS | | |

03-OCT-2005 10:33
 \DOT\DESR0010\GROUPS-WZTCCC\designgroup4\squad4\resurfacing\div07\I-4713\et02\505\14713detour\14713.tc.tcp_detour.eng.dgn
 pseymore AT WZTCC206427