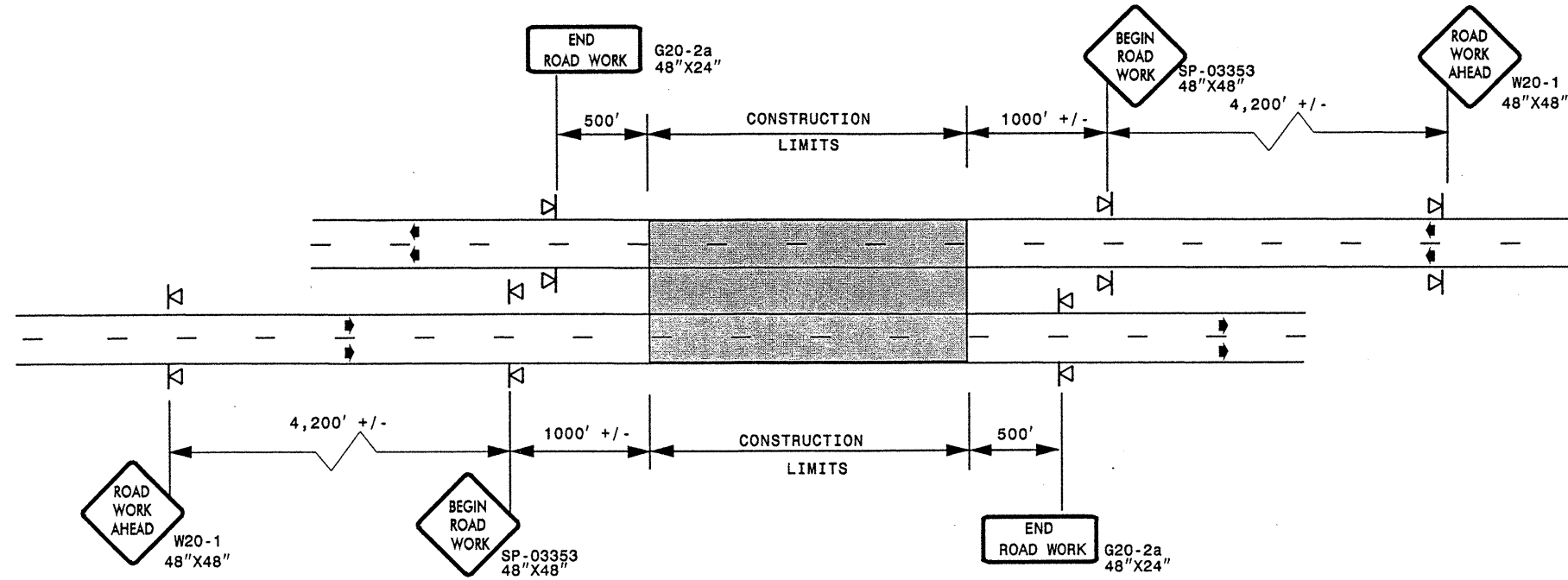


ADVANCED WORK ZONE WARNING SIGNING FOR FREEWAYS (4 LANES OR GREATER)

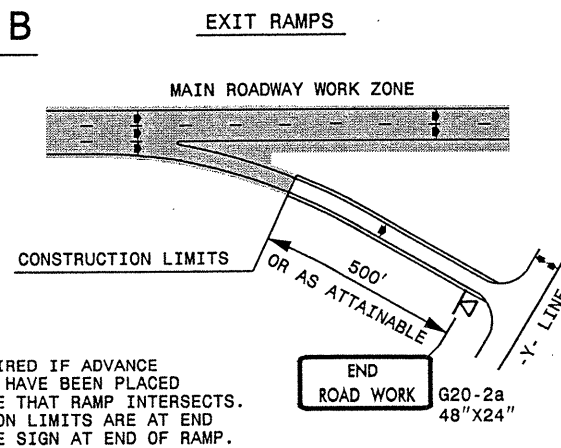
DETAIL A



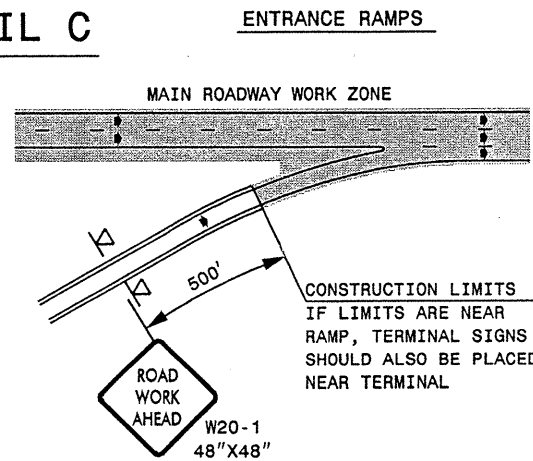
STATE OF NORTH CAROLINA  
DEPT. OF TRANSPORTATION  
DIVISION OF HIGHWAYS  
RALEIGH, N.C.

ROADWAYS INTERSECTING ALONG FREEWAY WORK ZONE (Y-LINES)

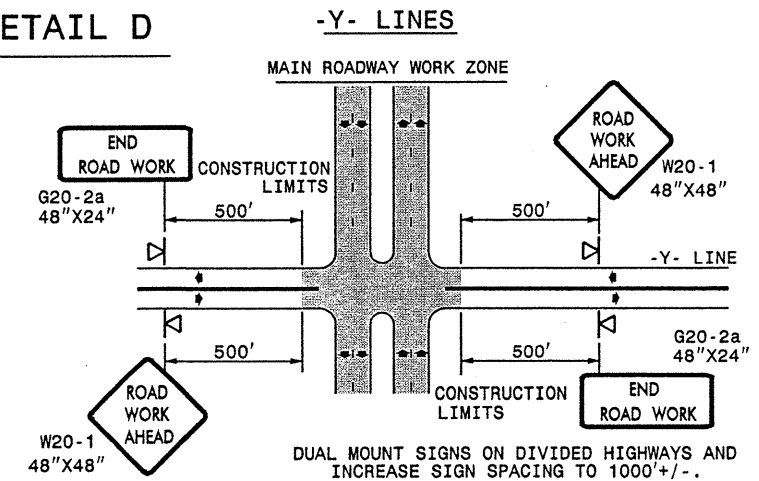
DETAIL B



DETAIL C



DETAIL D



DETAIL DRAWING  
FOR FREEWAYS  
WORK ZONE WARNING SIGNS  
(SHORT-DURATION LANE CLOSURES)

GENERAL NOTES

- USE FLUORESCENT ORANGE SHEETING (TYPE VII OR HIGHER) ON ALL ADVANCED WORK ZONE SIGNS.
- DO NOT INSTALL ADVANCE WARNING SIGNS MORE THAN 3 DAYS PRIOR TO BEGINNING OF WORK.
- ALL SIGN SPACING DIMENSIONS ARE APPROXIMATE, FIELD ADJUST AS NECESSARY OR AS DIRECTED.
- USE PORTABLE WORK ZONE SIGNS ONLY WITH PORTABLE WORK ZONE SIGN STANDS SPECIFICALLY DESIGNED FOR ONE ANOTHER. PORTABLE WORK ZONE SIGNS MAY BE ROLL UP OR APPROVED COMPOSITE.
- PROVIDE PORTABLE WORK ZONE SIGN STANDS, PORTABLE SIGNS AND SIGN SHEETING WHICH ARE LISTED ON THE NORTH CAROLINA DEPARTMENT OF TRANSPORTATION'S APPROVED PRODUCT LIST OR ACCEPTED AS TRAFFIC QUALIFIED BY THE TRAFFIC CONTROL UNIT.
- \*\* TWO-WAY UNDIVIDED ADVANCE WARNING SIGN CONFIGURATION MAY BE USED ON MULTI-LANE FACILITIES WHERE CONDITIONS LIMIT THE USE OF DUAL MOUNTED SIGNS AS DETERMINED BY THE ENGINEER.

**LEGEND**

◁ PORTABLE SIGN

➡ DIRECTION OF TRAFFIC FLOW

SHEET 1 OF 1

APPROVED: _____	DATE: _____	DETAIL DRAWING FOR FREEWAYS WORK ZONE WARNING SIGNS	
SEAL	SCALE: NONE	REVISIONS	
	DATE: _____	7-98	10/01
	DWG. BY: _____	10-98	03/04
	DESIGN BY: _____	01/01	11/04
REVIEWED BY: _____			

06-DEC-2005 18:30 \\DOT\DF\SR001\ON\GROU\PS-WZTCCC\design\group4\squod4\resur\fac\div10\wsl0cr106013etcmecleber\g\10CR106013etcmecleber\4lanes\greateatrev05.dgn