

SECTION A-A

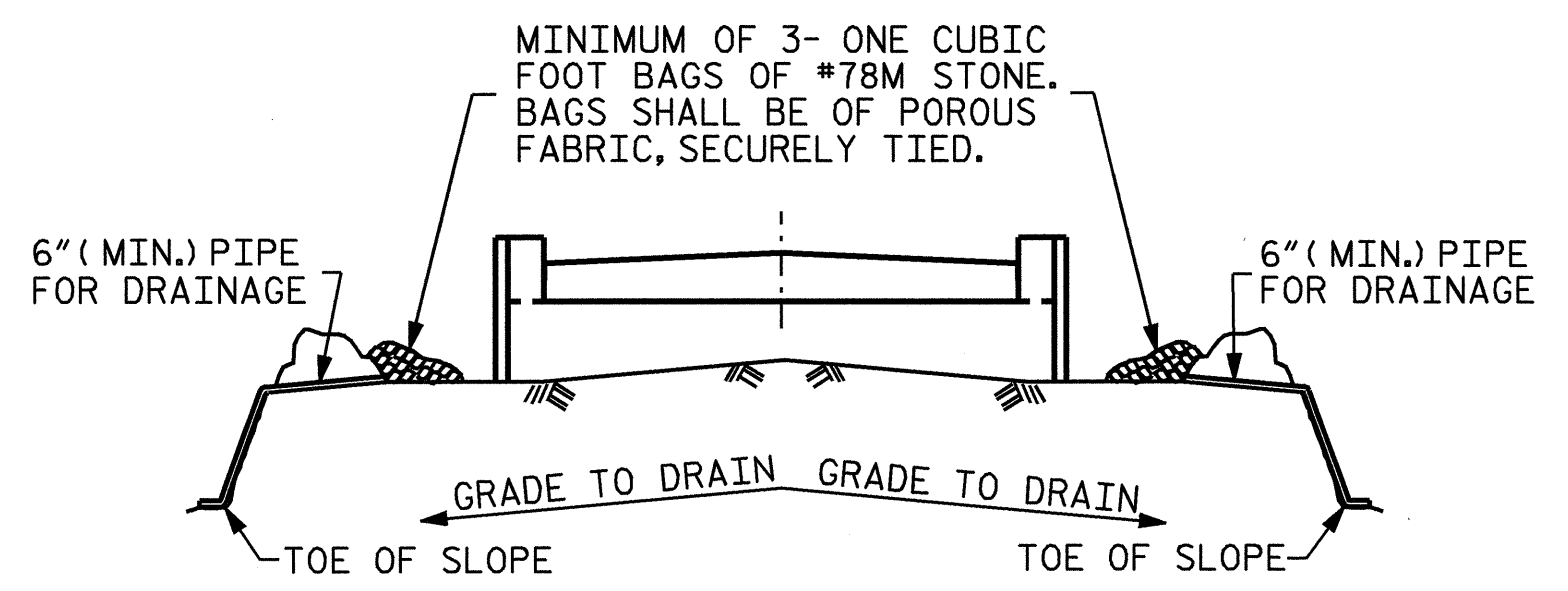
— BAR TYPE —

ALL BAR DIMENSIONS ARE OUT TO OUT.

BILL OF MATERIAL						
FOR END BENT #1						
BAR	NO.	SIZE	TYPE	LENGTH	WEIGHT	
B1	8	#9	1	41'-0"	1115	
B2	2	#6	STR	38'-8"	116	
B3	8	#4	STR	20'-7"	110	
B4	10	#4	STR	2'-5"	16	
D1	22	#8	STR	2'-3"	132	
H1	28	#4	2	6'-4"	118	
K1	8	#4	STR	20'-7"	110	
K2	8	#4	STR	2'-6"	13	
S1	34	#4	3	3'-2"	72	
S2	34	#4	4	7'-5"	168	
S3	18	#4	5	6'-6"	78	
U1	33	#4	6	3'-2"	70	
U2	4	#4	6	5'-1"	14	
V1	66	#4	STR	3'-8"	162	
V2	36	#4	STR	4'-11"	118	
REINFORCING STEEL				=	2412	LBS

CLASS A CONCRETE BREAKDOWN		
POUR #1	CAP & LOWER PART OF WINGS	C.Y.
		10.9
POUR #2	UPPER PART OF WINGS & BACKWALL	C.Y.
		3.7
POUR #3	LATERAL GUIDES	C.Y.
		0.1
TOTAL CLASS A CONCRETE		C.Y.
		14.7

HP 12 X 53 STEEL PILES	NO. 9	LIN. FT.	90
STEEL PILE POINTS	EACH		9



MINIMUM OF 3- ONE CUBIC FOOT BAGS OF #78M STONE. BAGS SHALL BE OF POROUS FABRIC, SECURELY TIED.

6" (MIN.) PIPE FOR DRAINAGE

6" (MIN.) PIPE FOR DRAINAGE

GRADE TO DRAIN

GRADE TO DRAIN

TOE OF SLOPE

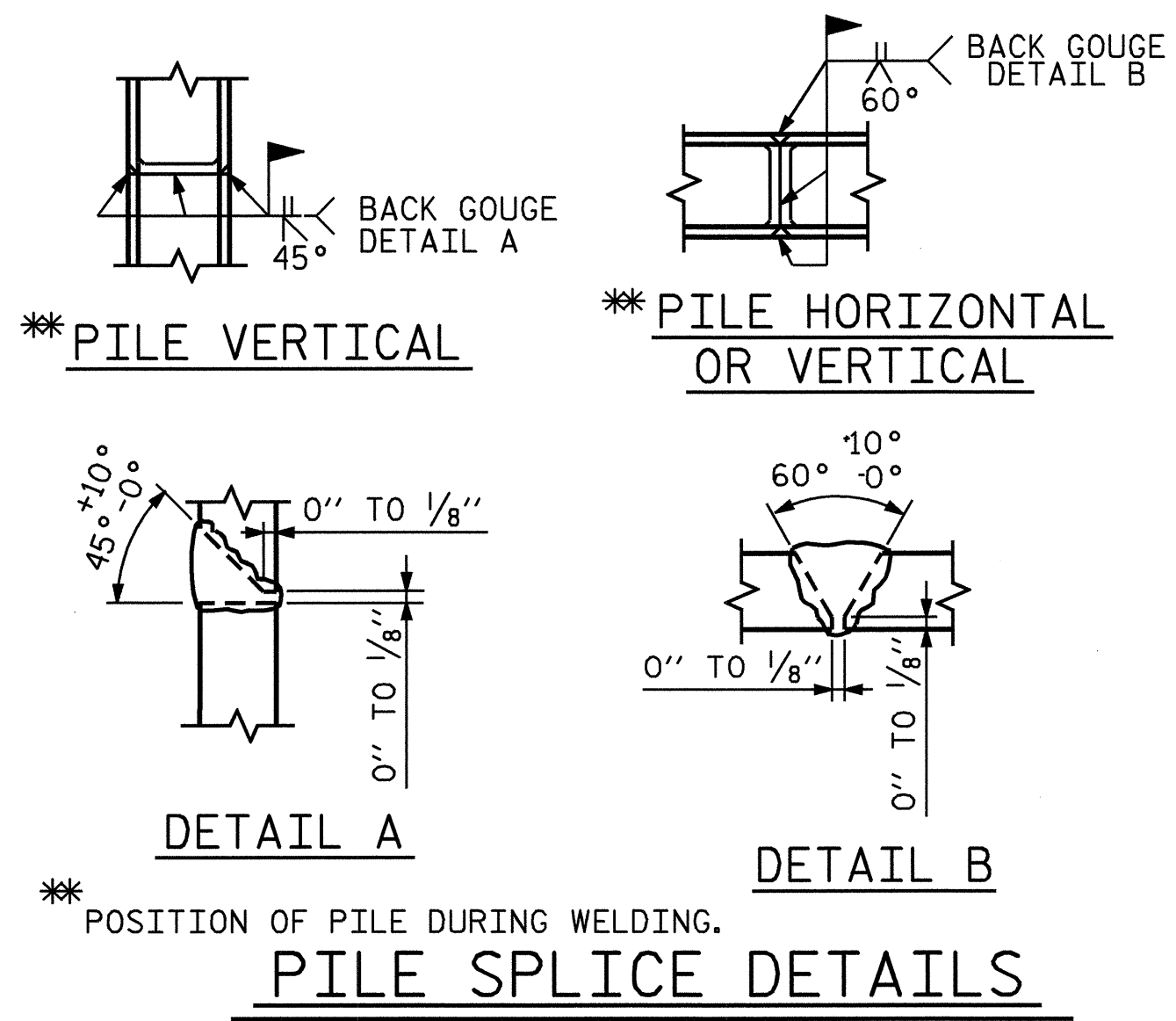
TOE OF SLOPE

BAGGED STONE AND PIPE SHALL BE PLACED IMMEDIATELY AFTER COMPLETION OF END BENT EXCAVATION. PIPE MAY BE EITHER CONCRETE, CORRUGATED STEEL, CORRUGATED ALUMINUM ALLOY, OR CORRUGATED PLASTIC. PERFORATED PIPE WILL NOT BE ALLOWED.

BAGGED STONE SHALL REMAIN IN PLACE UNTIL THE ENGINEER DIRECTS THAT IT BE REMOVED. THE CONTRACTOR SHALL REMOVE AND DISPOSE OF SILT ACCUMULATIONS AT BAGGED STONE WHEN SO DIRECTED BY THE ENGINEER. BAGS SHALL BE REMOVED AND REPLACED WHENEVER THE ENGINEER DETERMINES THAT THEY HAVE DETERIORATED AND LOST THEIR EFFECTIVENESS.

NO SEPARATE PAYMENT WILL BE MADE FOR THIS WORK AND THE ENTIRE COST OF THIS WORK SHALL BE INCLUDED IN THE UNIT CONTRACT PRICE BID FOR THE SEVERAL PAY ITEMS.

TEMPORARY DRAINAGE AT END BENT



PILE SPLICE DETAILS

PROJECT NO. B-4180

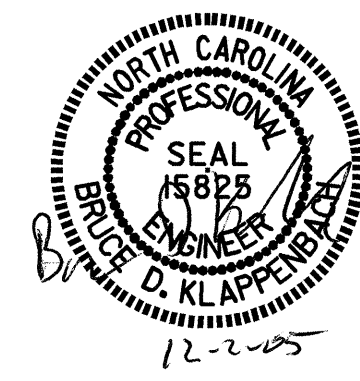
MACON COUNTY

STATION: 17+06.00 -L-

SHEET 3 OF 3

STATE OF NORTH CAROLINA
DEPARTMENT OF TRANSPORTATION
RALEIGH

**SUBSTRUCTURE
END BENT #1**



REVISIONS						SHEET NO.
NO.	BY:	DATE:	NO.	BY:	DATE:	S-11
1			3			TOTAL SHEETS
2			4			18