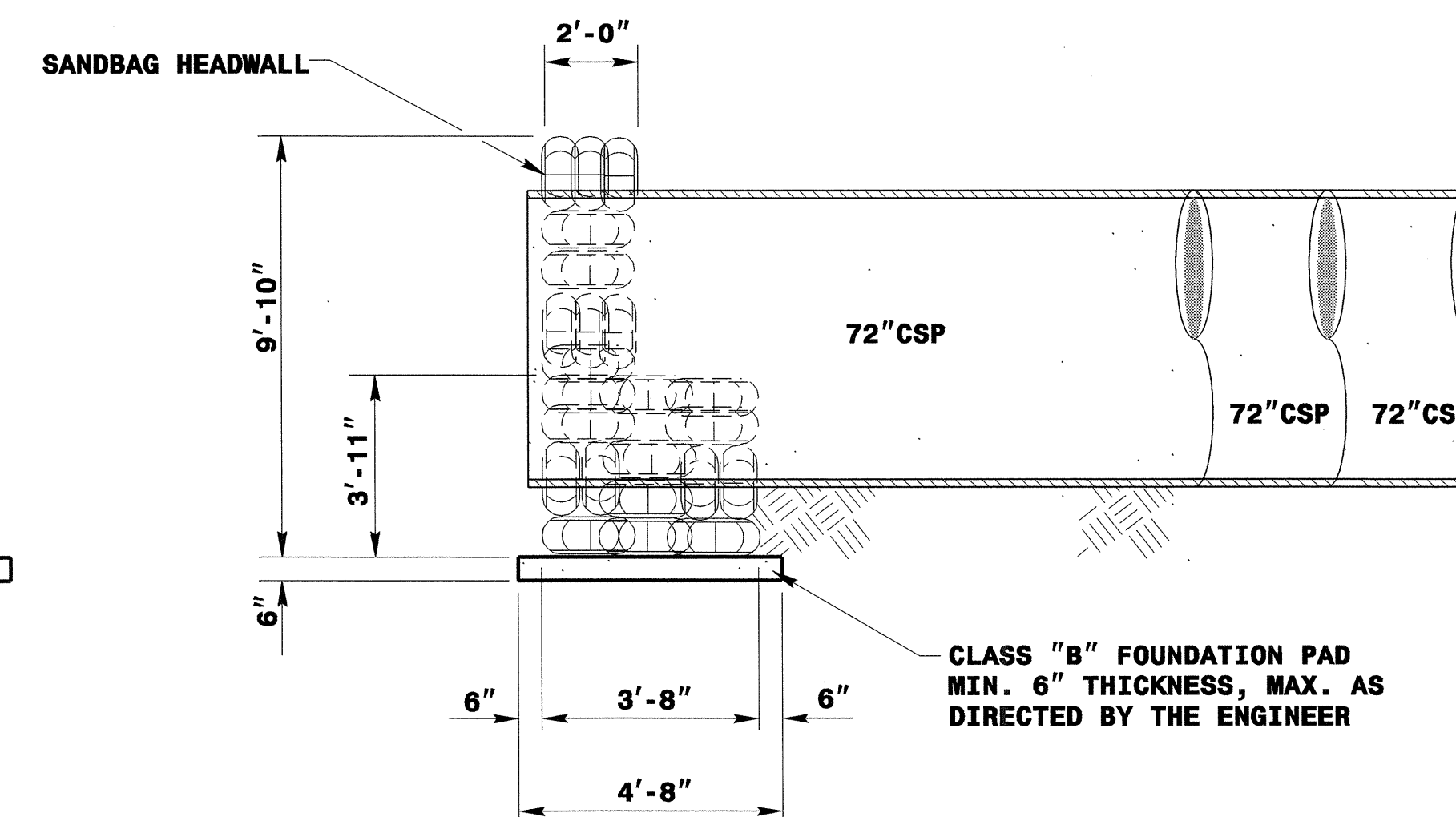
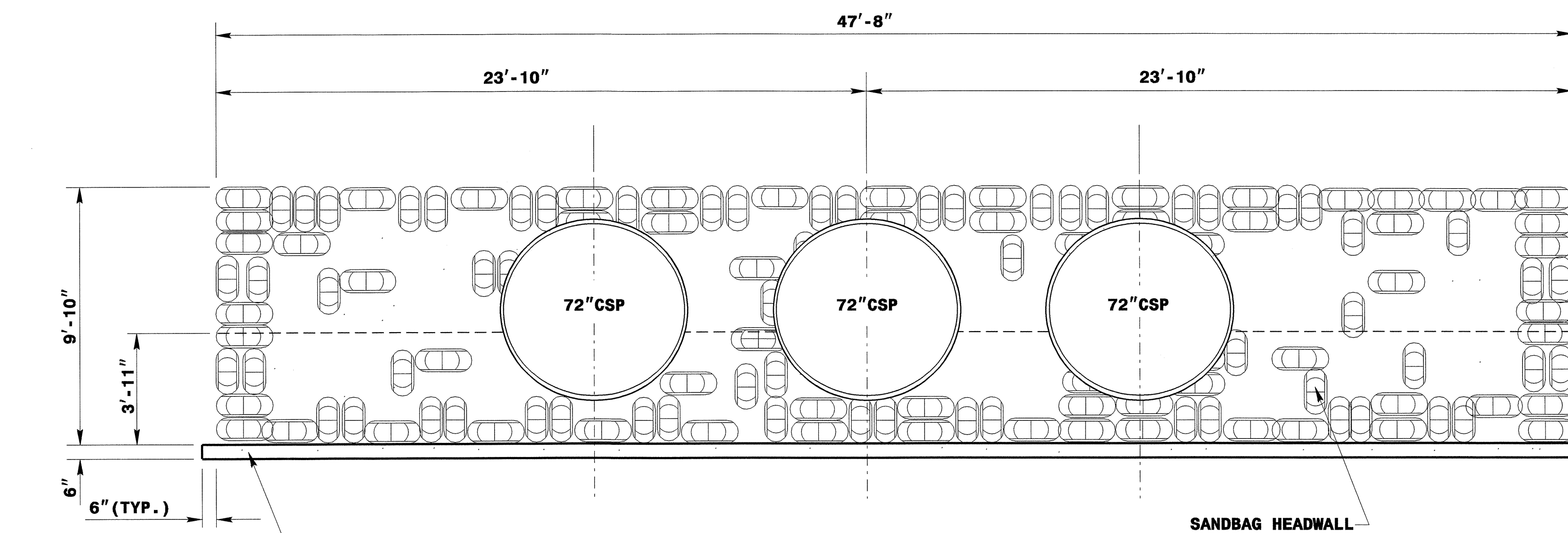
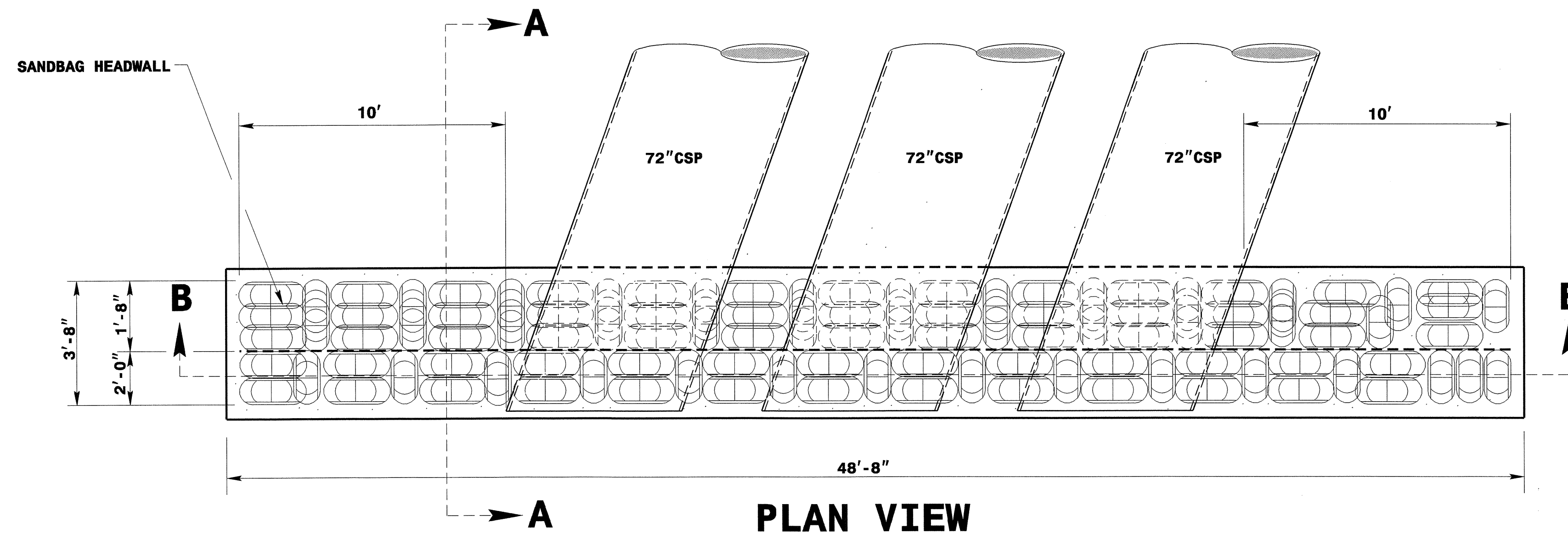


5/14/99



CLASS "B" FOUNDATION PAD  
MIN. 6" THICKNESS, MAX. AS  
DIRECTED BY THE ENGINEER

CLASS "B" FOUNDATION PAD  
MIN. 6" THICKNESS, MAX. AS  
DIRECTED BY THE ENGINEER

**NOTES:**

- \* CLASS "B" CONCRETE FOUNDATION PAD MAY BE ELIMINATED FOR ROCK OR FIRM CLAY BED LOCATIONS AS DIRECTED BY THE ENGINEER.
- \* CONSTRUCT HEADWALL IN ACCORDANCE WITH SPECIAL PROVISIONS AND THIS DETAIL.
- \* #13 REINFORCING BARS (GRADE 60) 30" LONG MAY BE SUBSTITUTED FOR 8" SPIKES. THE #13 REINFORCING BARS SHALL BE DRIVEN THRU 5 SANDBAGS MAXIMUM.

**QUANTITIES:**

- \* 46.3 CU. YDS. OF SANDBAG AREA.  
-9.4 CU.YDS. AREA FOR 3-72" CSP
- 36.9 CU.YDS. TOTAL SANDBAG AREA IN WALL
- \* 4.2 CU.YDS. OF CLASS "B" CONCRETE IN FOUNDATION.



EACH BAG CONNECTED  
WITH 4 - 8" SPIKES

**PLAN VIEW**



**DESIGN SERVICES UNIT  
STANDARDS AND SPECIAL DESIGN**  
Office 919-250-4128 FAX 919-250-4119

**3-72" CSP SANDBAG HEADWALL**

ORIGINAL BY: \_\_\_\_\_ DATE: \_\_\_\_\_  
 MODIFIED BY: *rnbritt* DATE: 01-27-05  
 CHECKED BY: *Pauls Hunt* DATE: 1/21/05  
 FILE SPEC.: details/english/bridge/b3663headwall.dgn

\*68 JAN-2005 07:54  
 \*68 SANDBAG HEADWALL.dgn  
 details/english/bridge/b3663 headwall.dgn  
 rnbritt A