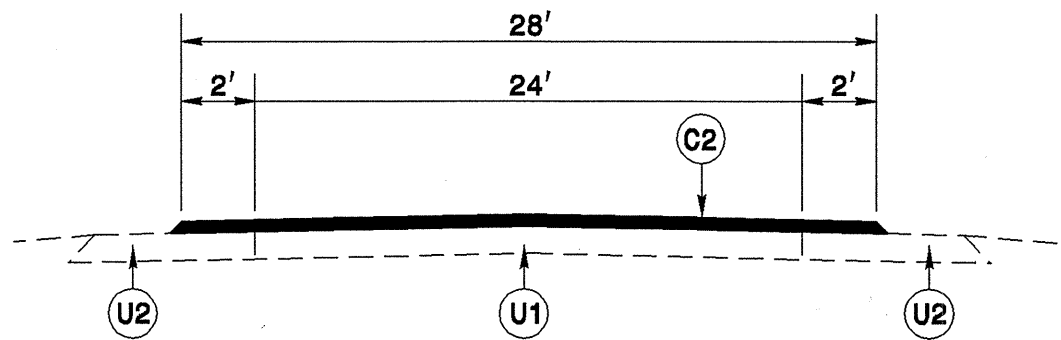
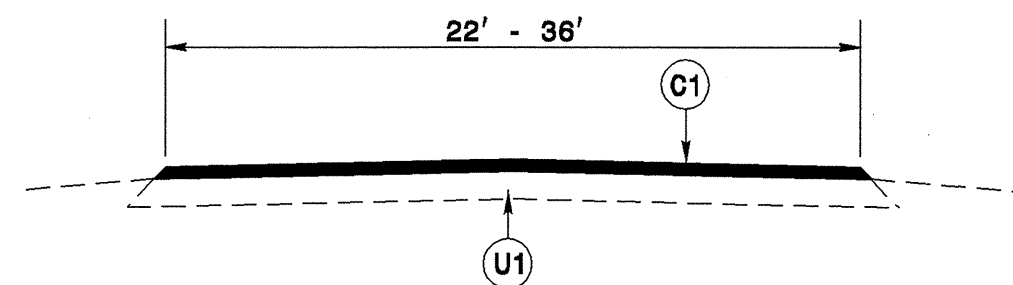


STATE	PROJECT NO.	SHEET NO.	TOTAL SHEETS
N.C.	7CR.10411.10, ETC	14	24

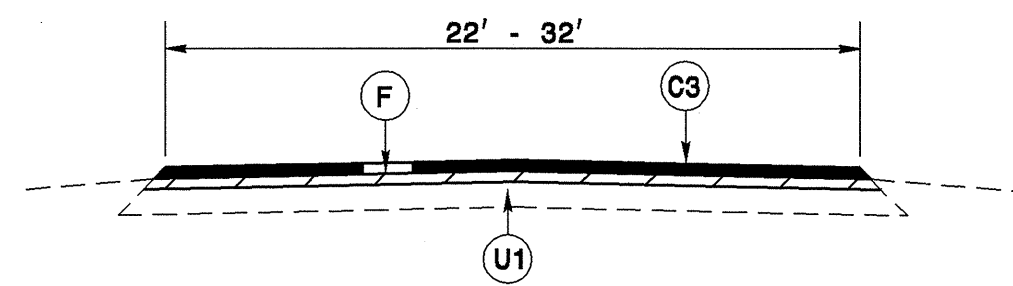
7CR.10411.10, 7CR.20411.10, 7CR.304108.10, 7CR.304110.10, 7CR.304112.10,



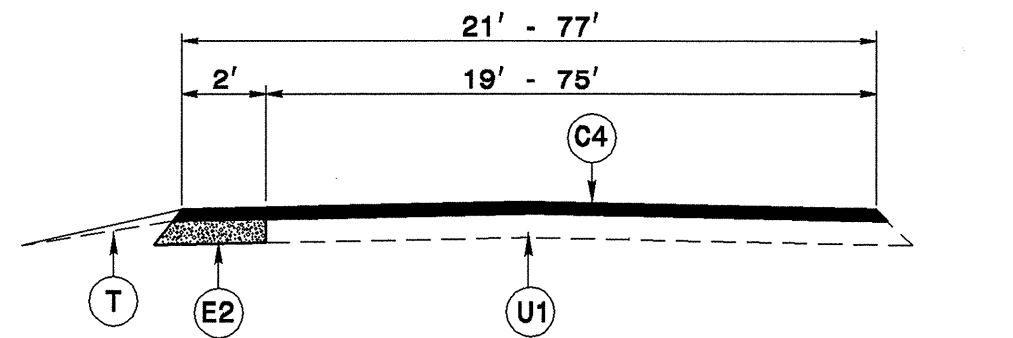
TYPICAL SECTION NO. 1



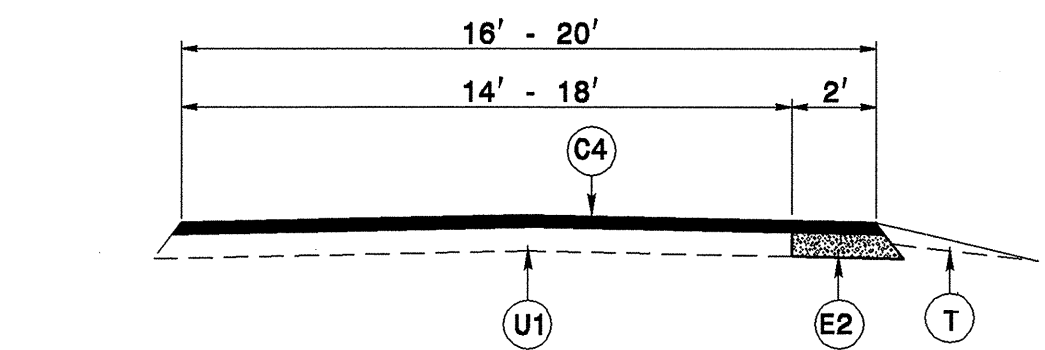
TYPICAL SECTION NO. 2



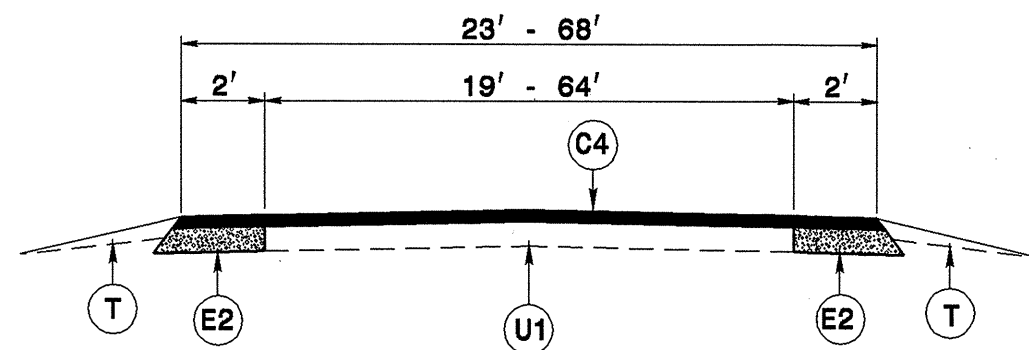
TYPICAL SECTION NO. 3



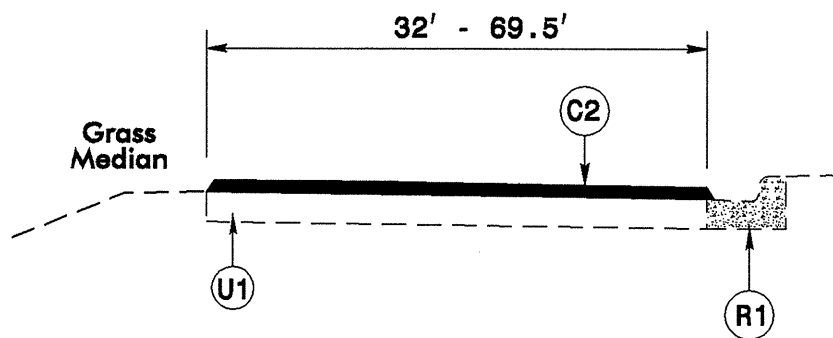
TYPICAL SECTION NO. 4



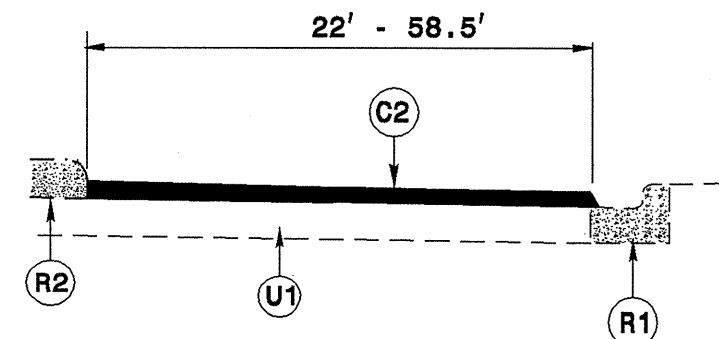
TYPICAL SECTION NO. 5



TYPICAL SECTION NO. 6

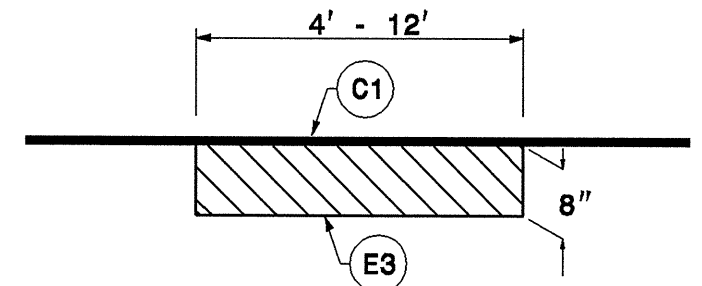


TYPICAL SECTION NO. 7



TYPICAL SECTION NO. 8

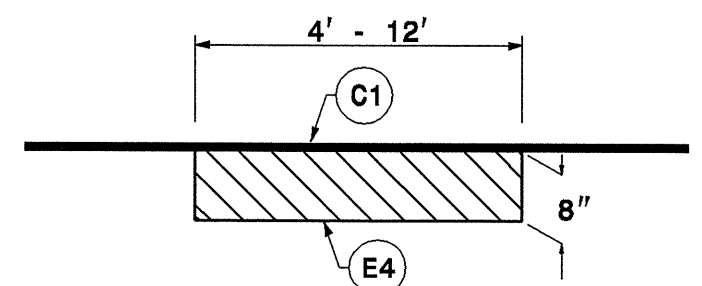
PATCHING DETAIL 1



DIG OUT EXISTING ASPHALT PAVEMENT 8" IN DEPTH, AT LOCATIONS AS DIRECTED BY THE ENGINEER.

NOTE: TO BE USED IN CONJUNCTION WITH TS. NO. 2, 15, 16, 17 ON MAP 11

PATCHING DETAIL 1



DIG OUT EXISTING ASPHALT PAVEMENT 8" IN DEPTH, AT LOCATIONS AS DIRECTED BY THE ENGINEER.

NOTE: TO BE USED IN CONJUNCTION WITH TS. NO. 4, 6 ON MAP 21

PAVEMENT SCHEDULE

C1	PROP. APPROX. 1 1/2" ASPHALT CONCRETE SURFACE COURSE, TYPE S9.5B, AT AN AVERAGE RATE OF 168 LBS. PER SQ. YD.	E1	PROP. APPROX. 8" ASPHALT CONCRETE BASE COURSE, TYPE B25.OB, AT AN AVERAGE RATE OF 912 LBS. PER SQ. YD.	R2	EXISTING CONCRETE ISLAND.
C2	PROP. APPROX. 5/8" ULTRATHIN HOT MIX ASPHALT CONCRETE SURFACE, TYPE B, AT AN AVERAGE RATE OF 70 LBS. PER SQ. YD.	E2	PROP. APPROX. 8" ASPHALT CONCRETE BASE COURSE, TYPE B25.OC, AT AN AVERAGE RATE OF 912 LBS. PER SQ. YD.	T	SHOULDER RECONSTRUCTION.
C3	PROP. APPROX. 1 1/4" ASPHALT CONCRETE SURFACE COURSE, TYPE S9.5B, AT AN AVERAGE RATE OF 140 LBS. PER SQ. YD.	E3	PROP. APPROX. 8" ASPHALT CONCRETE BASE COURSE, TYPE B25.OB, AT AN AVERAGE RATE OF 456 LBS. PER SQ. YD. IN EACH OF TWO LAYERS.	U1	EXISTING PAVEMENT.
C4	PROP. APPROX. 1 1/2" ASPHALT CONCRETE SURFACE COURSE, TYPE S9.5C, AT AN AVERAGE RATE OF 168 LBS. PER SQ. YD.	E4	PROP. APPROX. 8" ASPHALT CONCRETE BASE COURSE, TYPE B25.OC, AT AN AVERAGE RATE OF 456 LBS. PER SQ. YD. IN EACH OF TWO LAYERS.	U2	EXISTING PAVED SHOULDER.
D1	PROP. APPROX. 3" ASPHALT CONCRETE INTERMEDIATE COURSE, TYPE I19.OB, AT AN AVERAGE RATE OF 342 LBS. PER SQ. YD.	F	ASPHALT SURFACE TREATMENT, NO. 78M STONE		
D2	PROP. APPROX. 3" ASPHALT CONCRETE INTERMEDIATE COURSE, TYPE I19.OC, AT AN AVERAGE RATE OF 342 LBS. PER SQ. YD.	R1	EXISTING CONCRETE 2'-6" CURB AND GUTTER.		

5/28/99  
DATE  
TIME  
BY  
CHECKED  
APPROVED  
DESIGNED  
DRAWN  
SCALE  
SHEET NO.  
TOTAL SHEETS