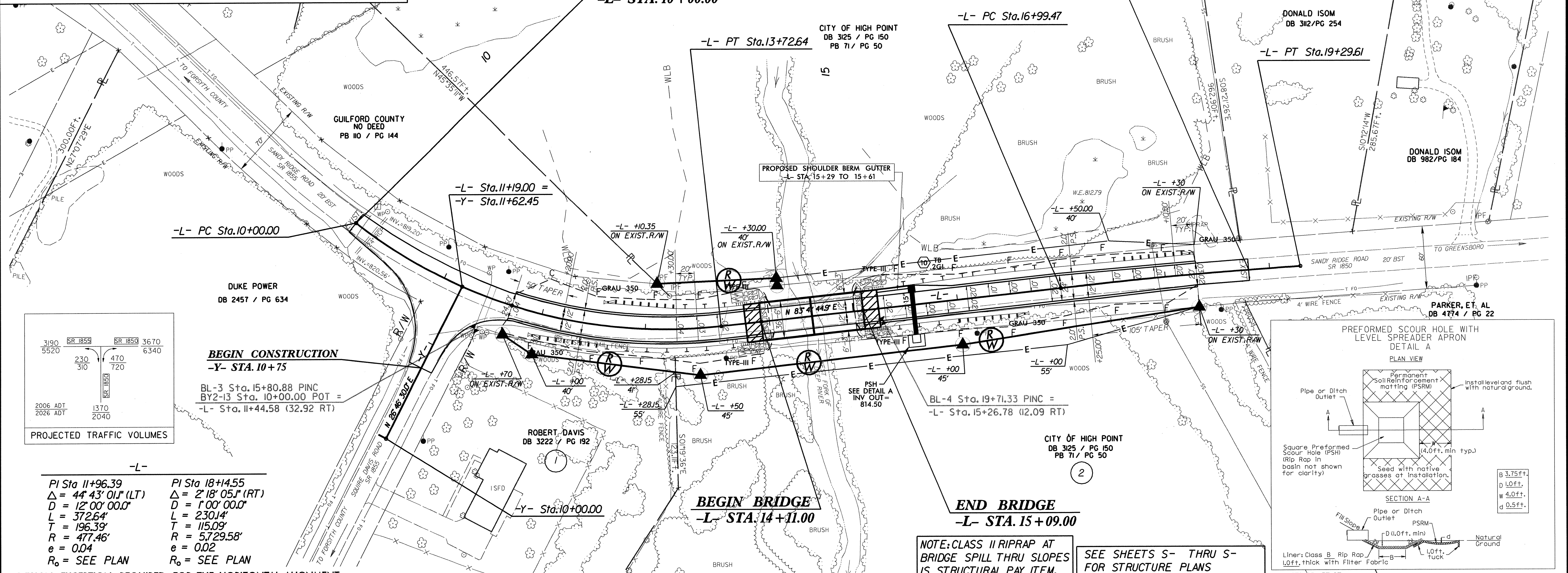


**END STATE PROJECT TIP B-3847**  
-L- STA. 18+80.00

**BEGIN STATE PROJECT TIP B-3847**  
-L- STA. 10+00.00

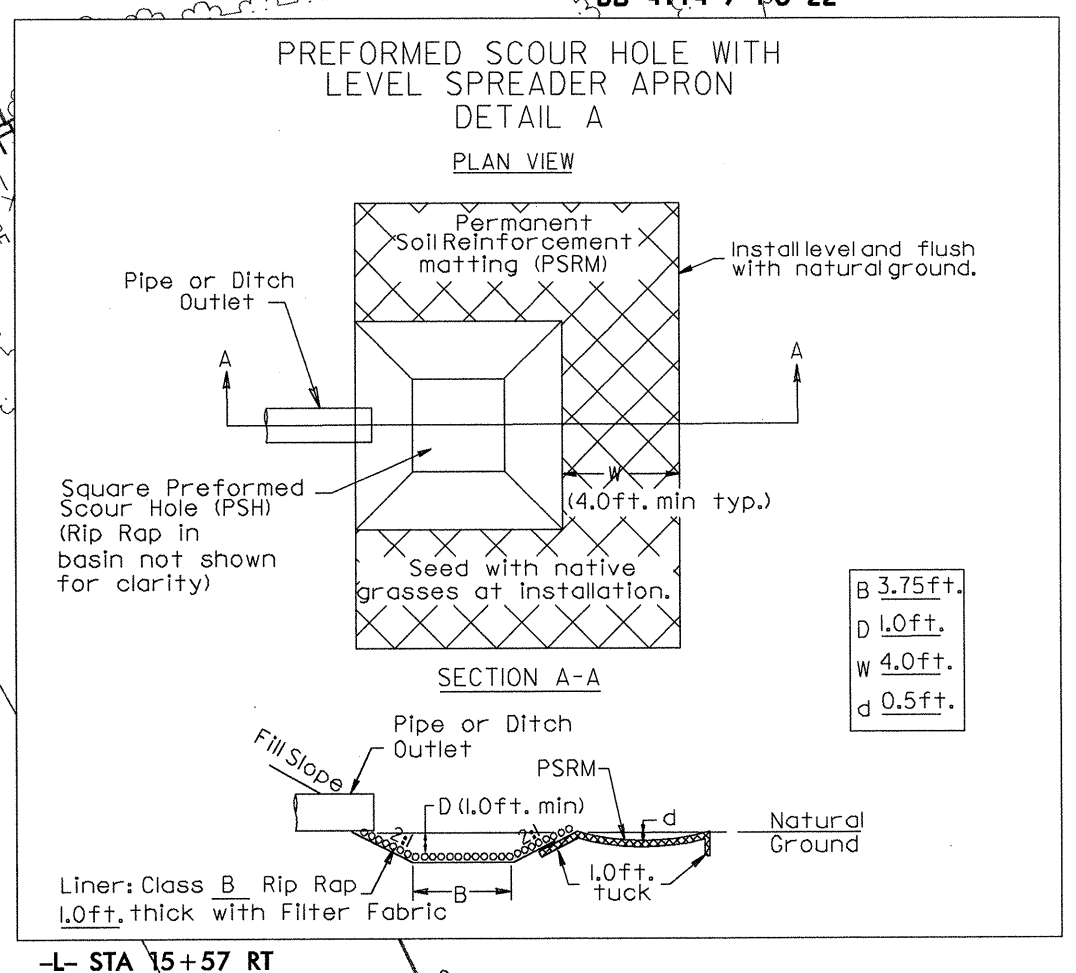


PROJECTED TRAFFIC VOLUMES

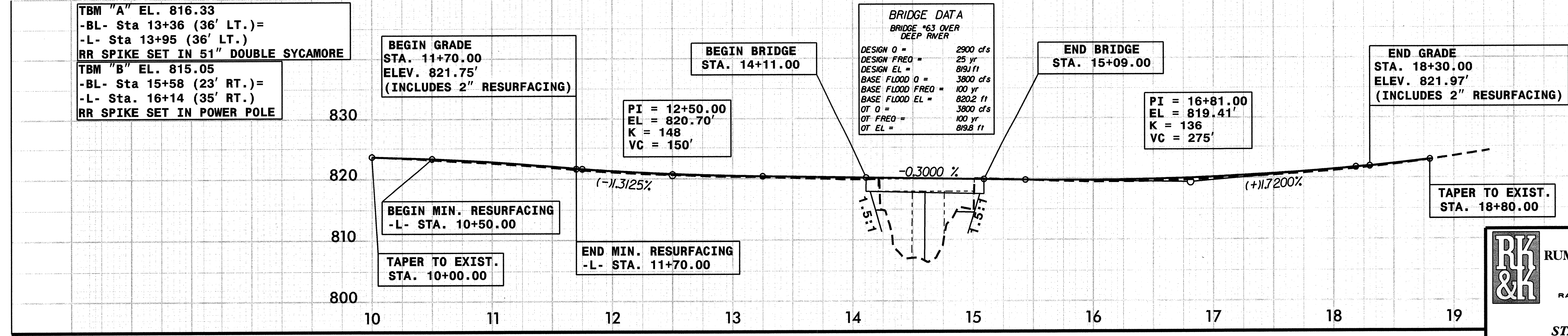
3190	SR 1850	SR 1850	3670
5520	230	470	6340
	310	720	
	SR 1850		
2006 ADT	1370	2040	
2026 ADT			

-L-  
 PI Sta 11+96.39      PI Sta 18+14.55  
 $\Delta = 44' 43" 01" (LT)$        $\Delta = 2' 18" 05" (RT)$   
 $D = 12' 00" 00.0"$        $D = 1' 00" 00.0"$   
 $L = 372.64'$        $L = 230.14'$   
 $T = 196.39'$        $T = 115.09'$   
 $R = 477.46'$        $R = 5729.58'$   
 $e = 0.04$        $e = 0.02$   
 $R_0 = \text{SEE PLAN}$        $R_0 = \text{SEE PLAN}$

DESIGN EXCEPTION REQUIRED FOR THE HORIZONTAL ALIGNMENT



NOTE: CLASS II RIPRAP AT BRIDGE SPILL THRU SLOPES IS STRUCTURAL PAY ITEM. SEE SHEETS S- THRU S- FOR STRUCTURE PLANS



BRIDGE DATA  
BRIDGE #63 OVER DEEP RIVER

DESIGN Q =	2900 cfs
DESIGN FREQ =	25 yr
DESIGN EL =	881.11'
BASE FLOOD Q =	3800 cfs
BASE FLOOD FREQ =	100 yr
BASE FLOOD EL =	820.2 ft
OT Q =	3800 cfs
OT FREQ =	100 yr
OT EL =	818.8 ft

REVISIONS

B-17-09-01

11/3/2005  
 R:\Roadway\Pro\1\3847\_rdy\_psh.dgn