

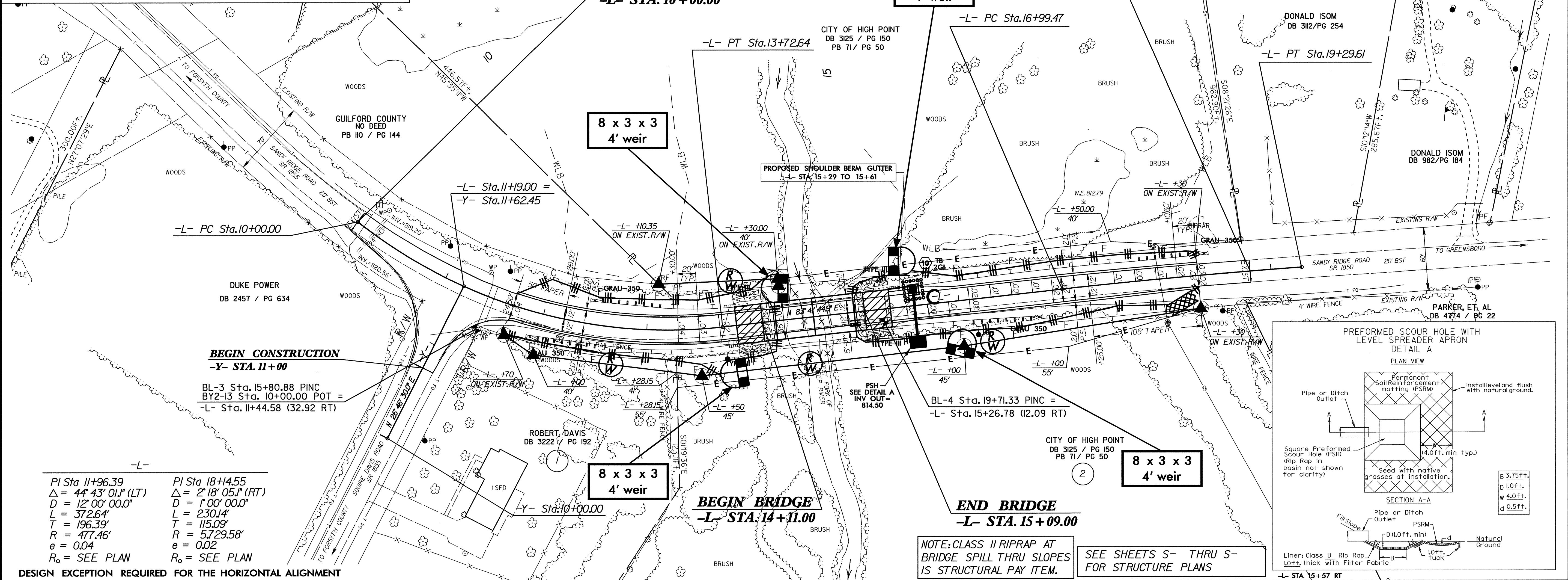
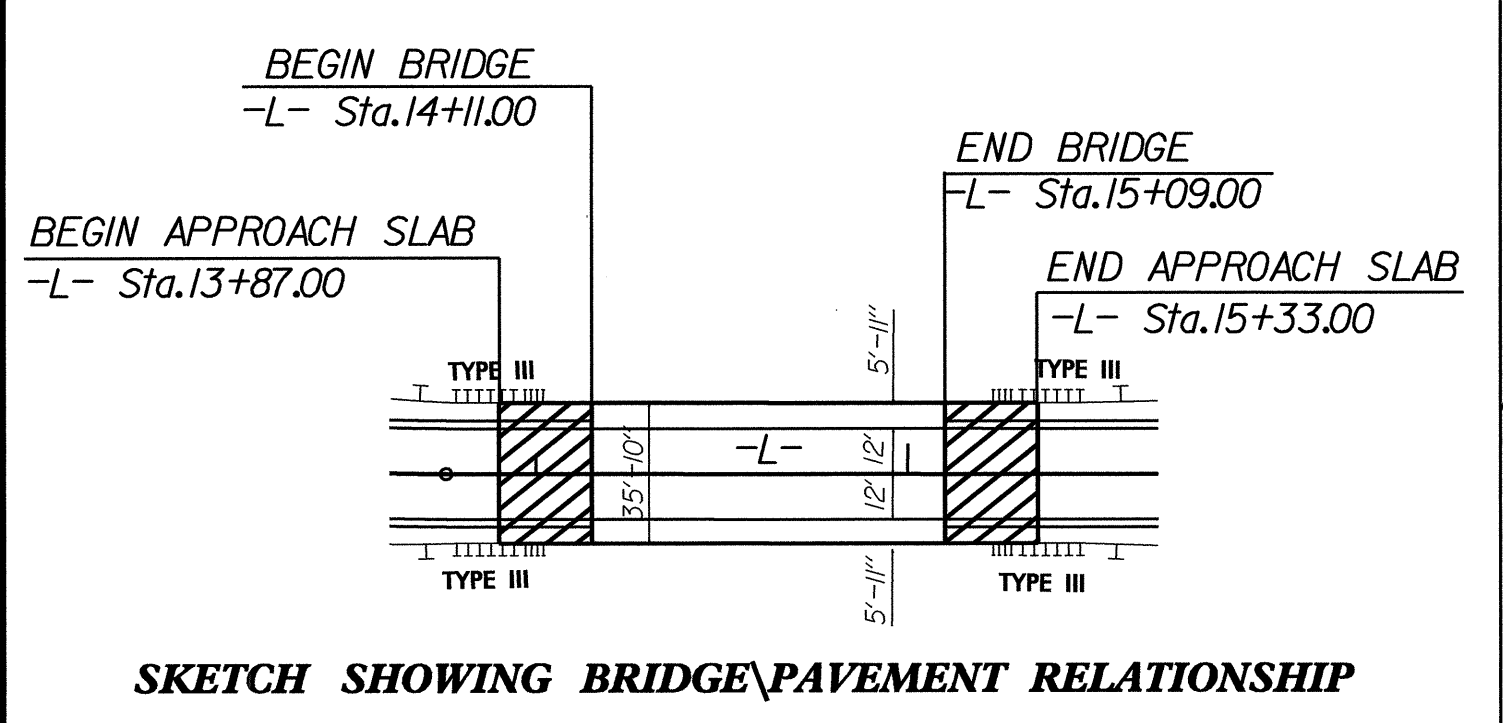
8/17/99
 REVISIONS
 08-SEP-2005 14:02
 c:\documents and settings\vinchan\desktop\3847\des\gn\3847.ec.dsn.dgn
 vinchan

PROJECT REFERENCE NO. B-3847	SHEET NO. EC-4/CONST.4
R/W SHEET NO.	
ROADWAY DESIGN ENGINEER	HYDRAULICS ENGINEER

Environmental Commitments

- No fill material is to be placed on the mitigation property (R-609 D) located to the northeast of Bridge No. 63.
- NCDOT will consider alternative methods of construction with an aggressive construction schedule to minimize time of the road closure.

NOTE: UTILIZE TEMPORARY ROCK SEDIMENT DAM TYPE - B AS STILLING BASIN WHERE APPLICABLE.



BEGIN CONSTRUCTION
 -Y- STA. 11+00

BL-3 Sta. 15+80.88 PINC
 BY2-3 Sta. 10+00.00 POT =
 -L- Sta. 11+44.58 (32.92 RT)

-L-
 PI Sta 11+96.39 PI Sta 18+45.55
 $\Delta = 44' 43" 01.1" (LT)$ $\Delta = 2' 18" 05.1" (RT)$
 $D = 12' 00" 00.0"$ $D = 1' 00" 00.0"$
 $L = 372.64'$ $L = 230.14'$
 $T = 196.39'$ $T = 115.09'$
 $R = 477.46'$ $R = 5729.58'$
 $e = 0.04$ $e = 0.02$
 $R_o = \text{SEE PLAN}$ $R_o = \text{SEE PLAN}$

