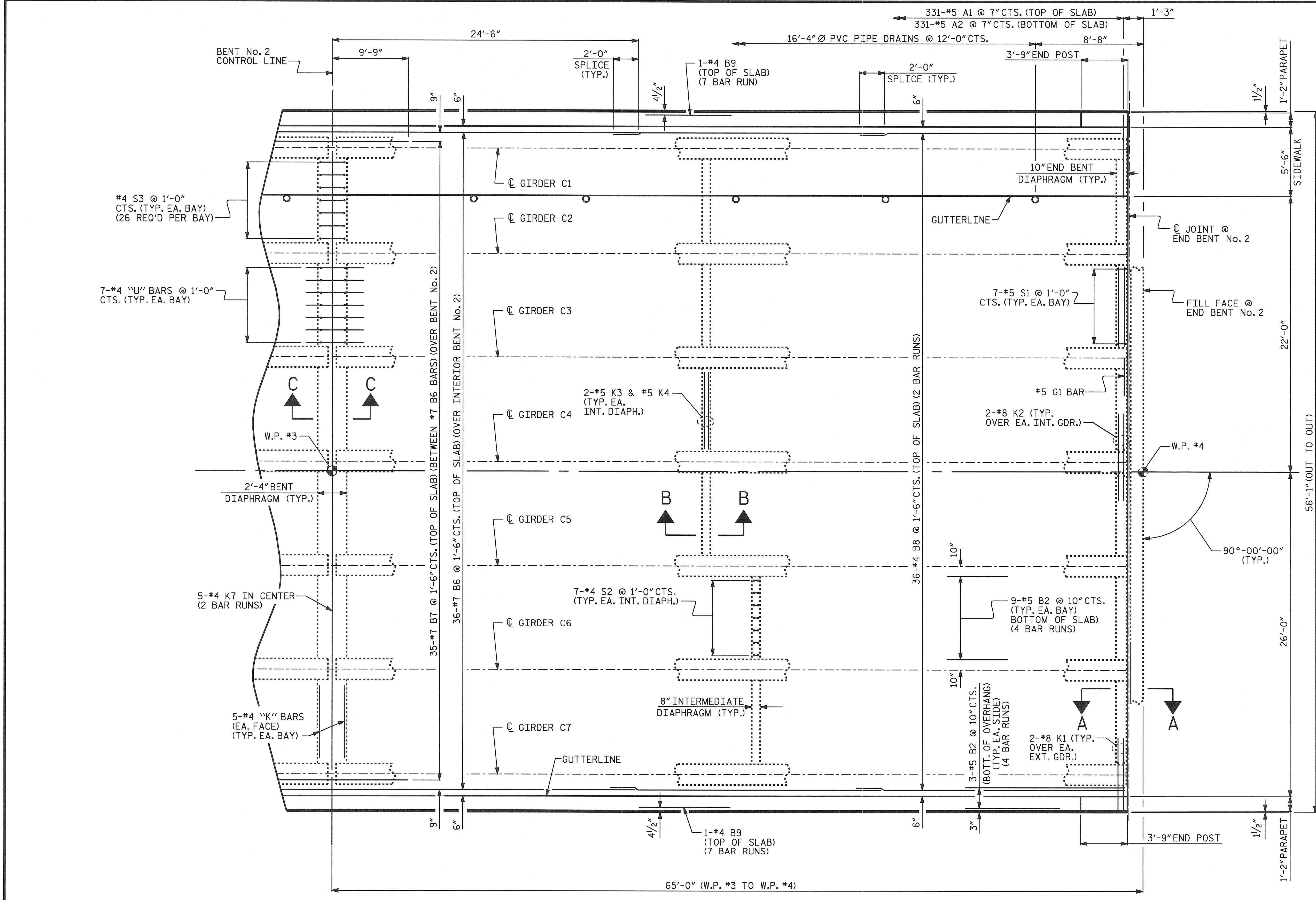


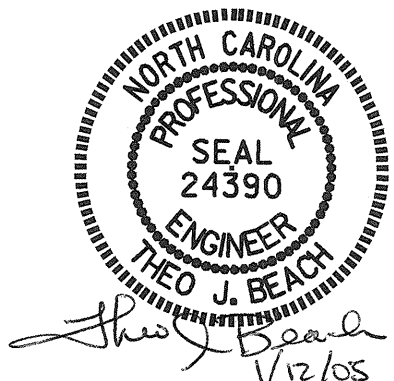
**NOTES:**  
 FOR PARAPET, END POST DETAILS AND REINFORCING STEEL, SEE "CONCRETE PARAPET DETAILS" SHEETS.  
 FOR SECTIONS, SEE "TYPICAL SECTION", SHEET 2 OF 2.



PLAN OF SPAN "C"

PROJECT NO. B-3652  
GUILFORD COUNTY  
 STATION: 21+87.50 -L-

STATE OF NORTH CAROLINA  
 DEPARTMENT OF TRANSPORTATION  
 RALEIGH  
 SUPERSTRUCTURE  
 PLAN OF SPAN "C"



DRAWN BY : S.B. WILLIAMS DATE : 3/16/04  
 CHECKED BY : P.C. BREWER DATE : 5/27/04

REVISIONS						SHEET NO.	
NO.	BY:	DATE:	NO.	BY:	DATE:	S-8	
1			3			TOTAL SHEETS	
2			4			42	