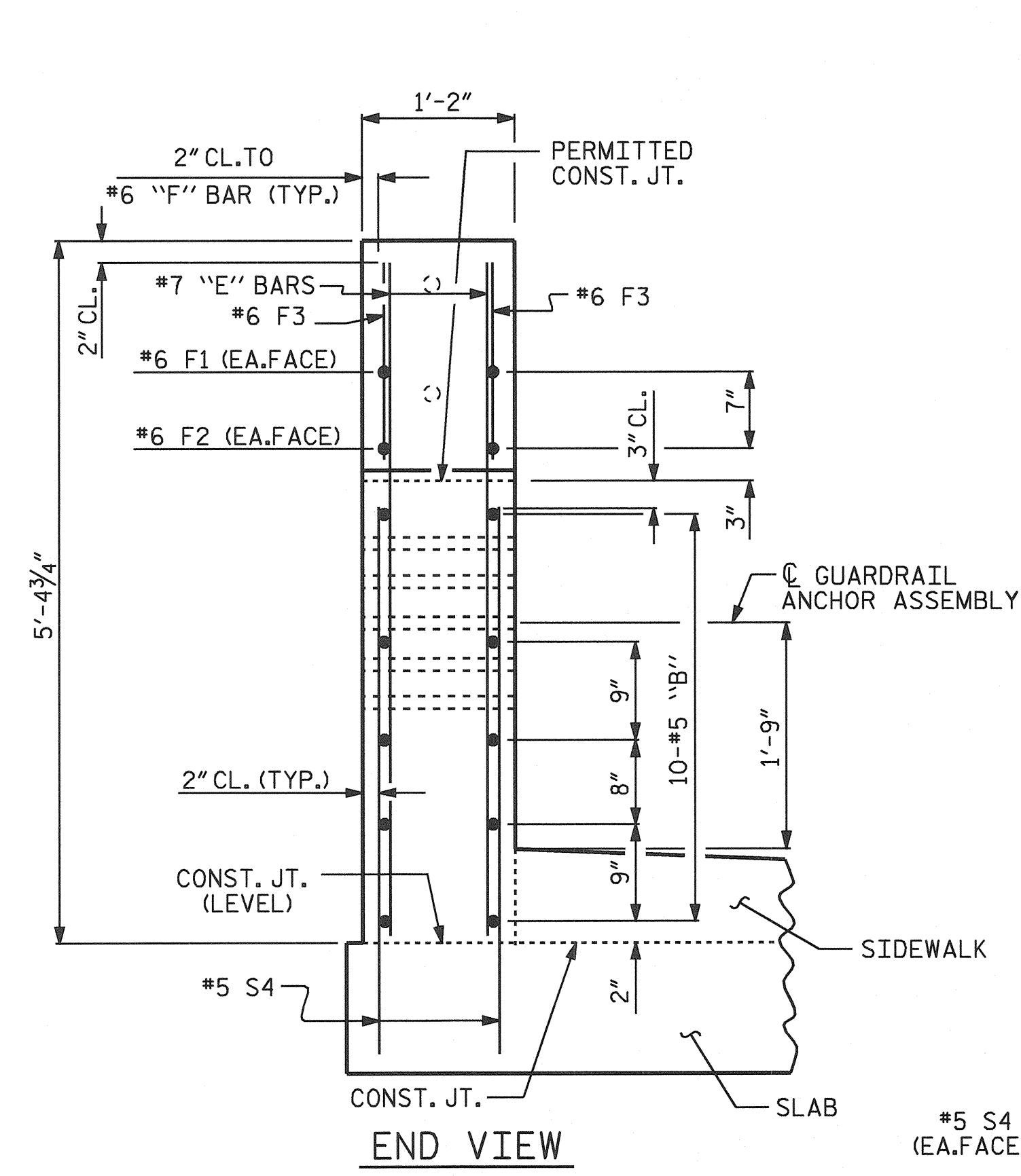
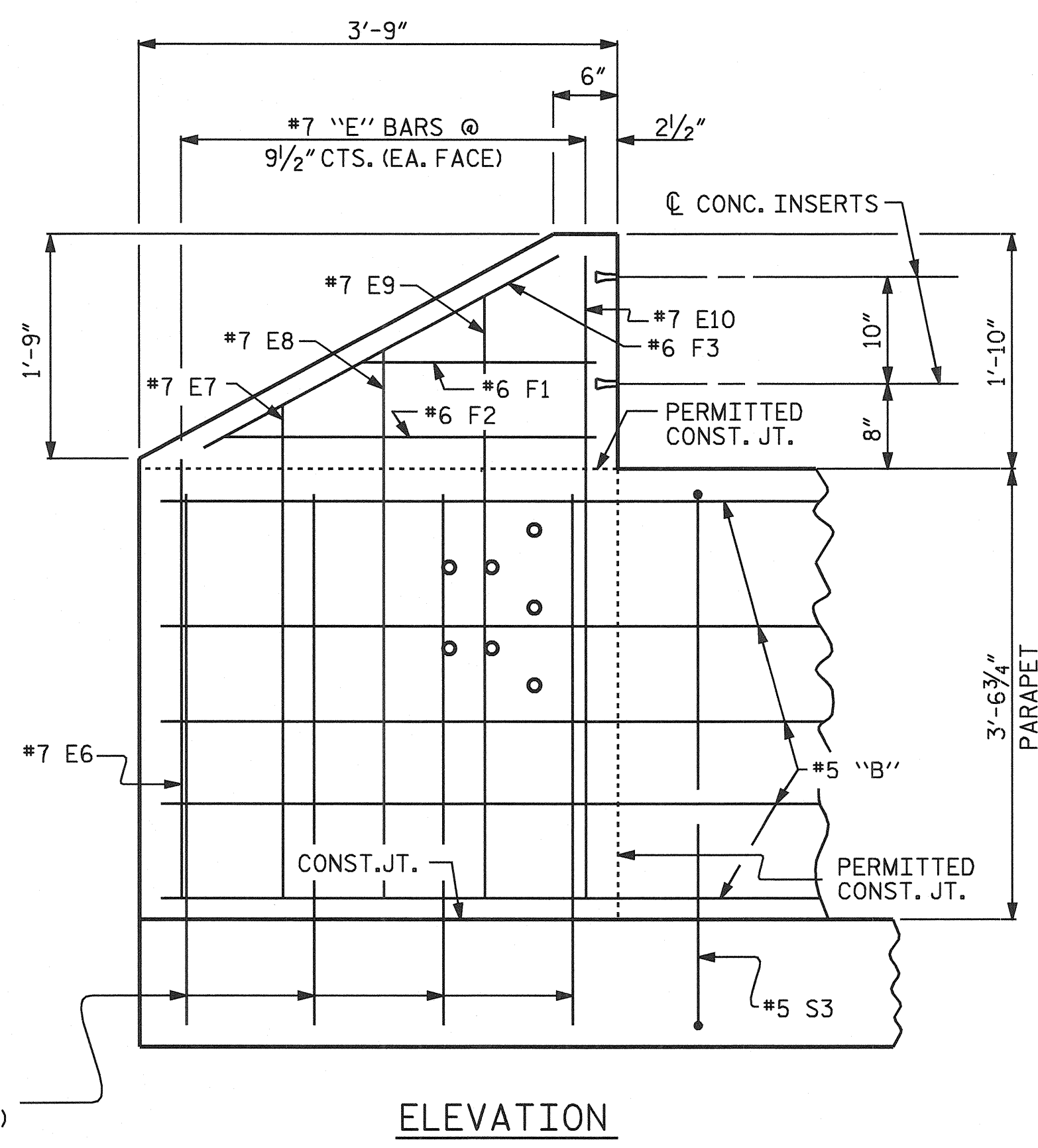


PLAN OF LEFT SIDE PARAPET

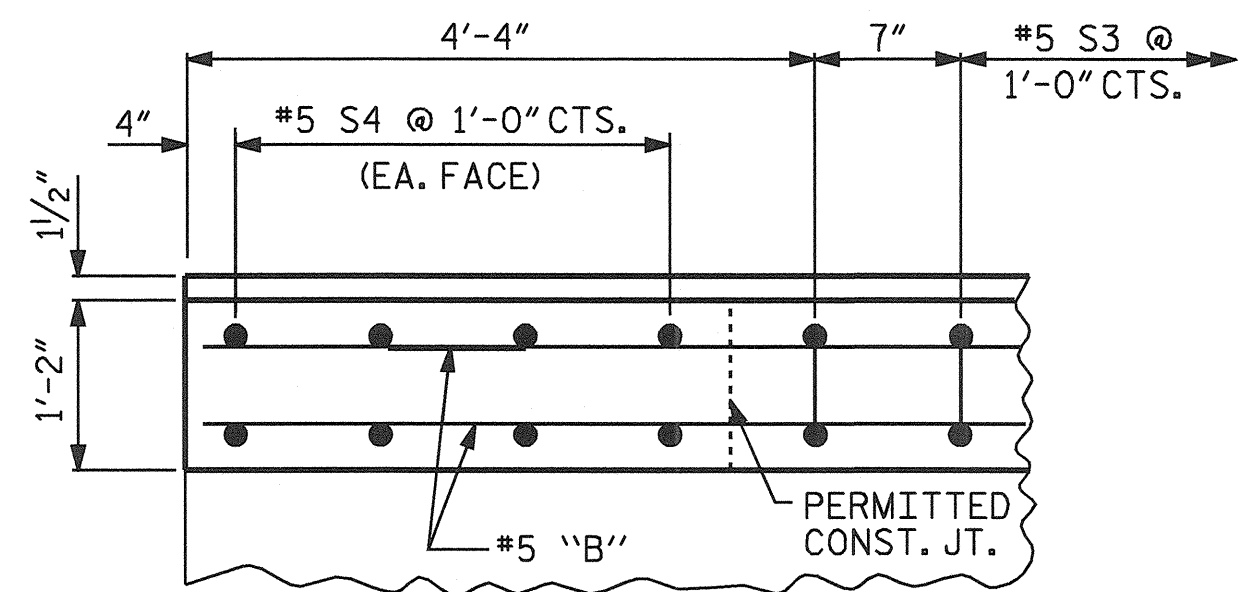
*5 S3 BARS MAY BE SHIFTED SLIGHTLY IN ORDER TO MAINTAIN A 2" MINIMUM CLEARANCE TO THE 1/2" EXPANSION JOINT MATERIAL IN THE PARAPET.



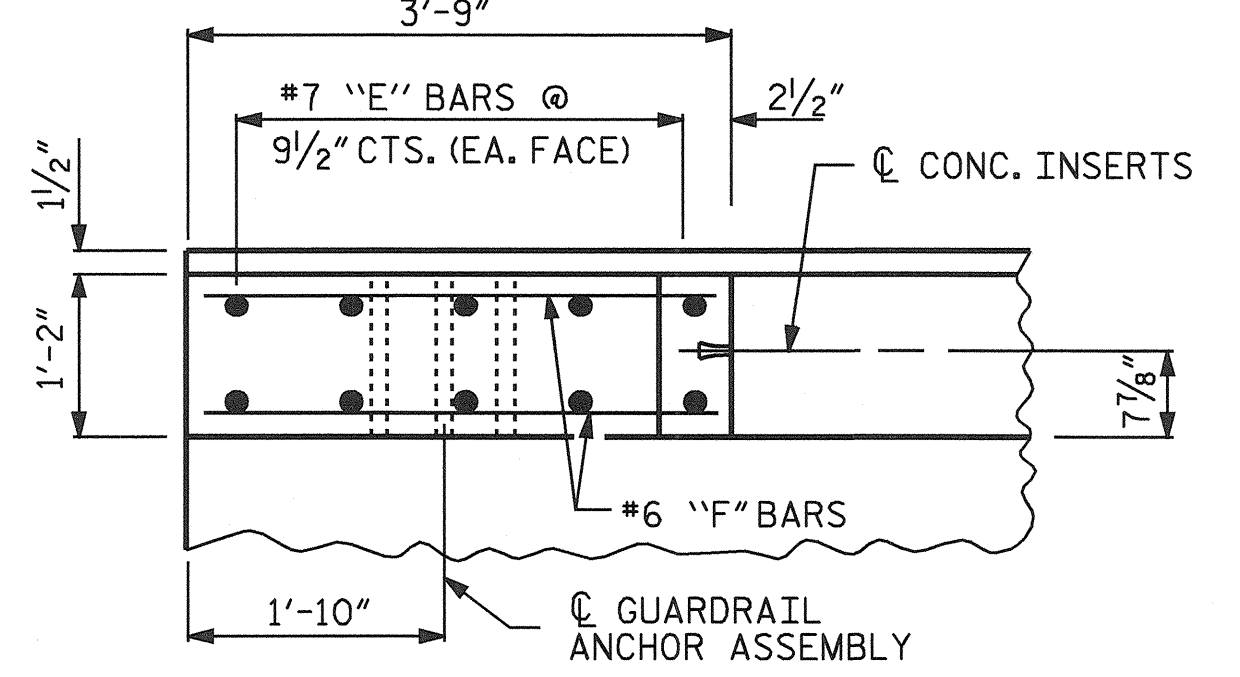
END VIEW



ELEVATION



PLAN OF PARAPET



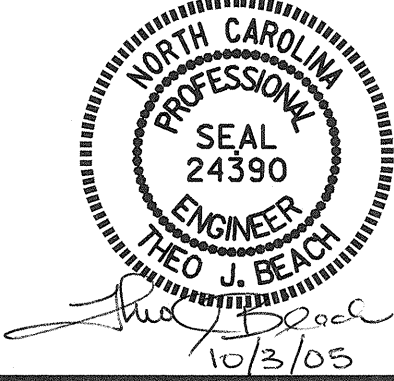
PLAN OF END POST

BILL OF MATERIAL					
LEFT SIDE PARAPET AND END POSTS					
BAR	NO.	SIZE	TYPE	LENGTH	WEIGHT
*B10	10	#5	STR	43'-6"	454
*B11	20	#5	STR	44'-1"	920
*B12	20	#5	STR	33'-6"	699
*E6	4	#7	STR	3'-5"	28
*E7	4	#7	STR	3'-10"	31
*E8	4	#7	STR	4'-4"	35
*E9	4	#7	STR	4'-9"	39
*E10	4	#7	STR	5'-2"	42
*F1	4	#6	STR	1'-11"	12
*F2	4	#6	STR	3'-1"	19
*F3	4	#6	STR	3'-4"	20
*S3	186	#5	1	9'-2"	1778
*S4	16	#5	STR	4'-0"	67
*EPOXY COATED REINF. STEEL =					4144 LBS
CLASS AA CONCRETE					30.2 C.Y.
1'-2" X 3'-6 3/4" CONCRETE PARAPET					192.83 L.F.
* THESE BARS ARE EPOXY COATED					
BAR TYPES					
ALL BAR DIMENSIONS ARE OUT TO OUT					

PROJECT NO. B-3652
GUILFORD COUNTY
 STATION: 21+87.50 -L-
 SHEET 2 OF 2

STATE OF NORTH CAROLINA
 DEPARTMENT OF TRANSPORTATION
 RALEIGH
 SUPERSTRUCTURE
 CONCRETE PARAPET
 DETAILS
 (LEFT SIDE)

REVISIONS						SHEET NO.
NO.	BY:	DATE:	NO.	BY:	DATE:	S-17
1			3			TOTAL SHEETS
2			4			42



DRAWN BY: P.C. BREWER DATE: 12/10/04
 CHECKED BY: THEO BEACH DATE: 12/04