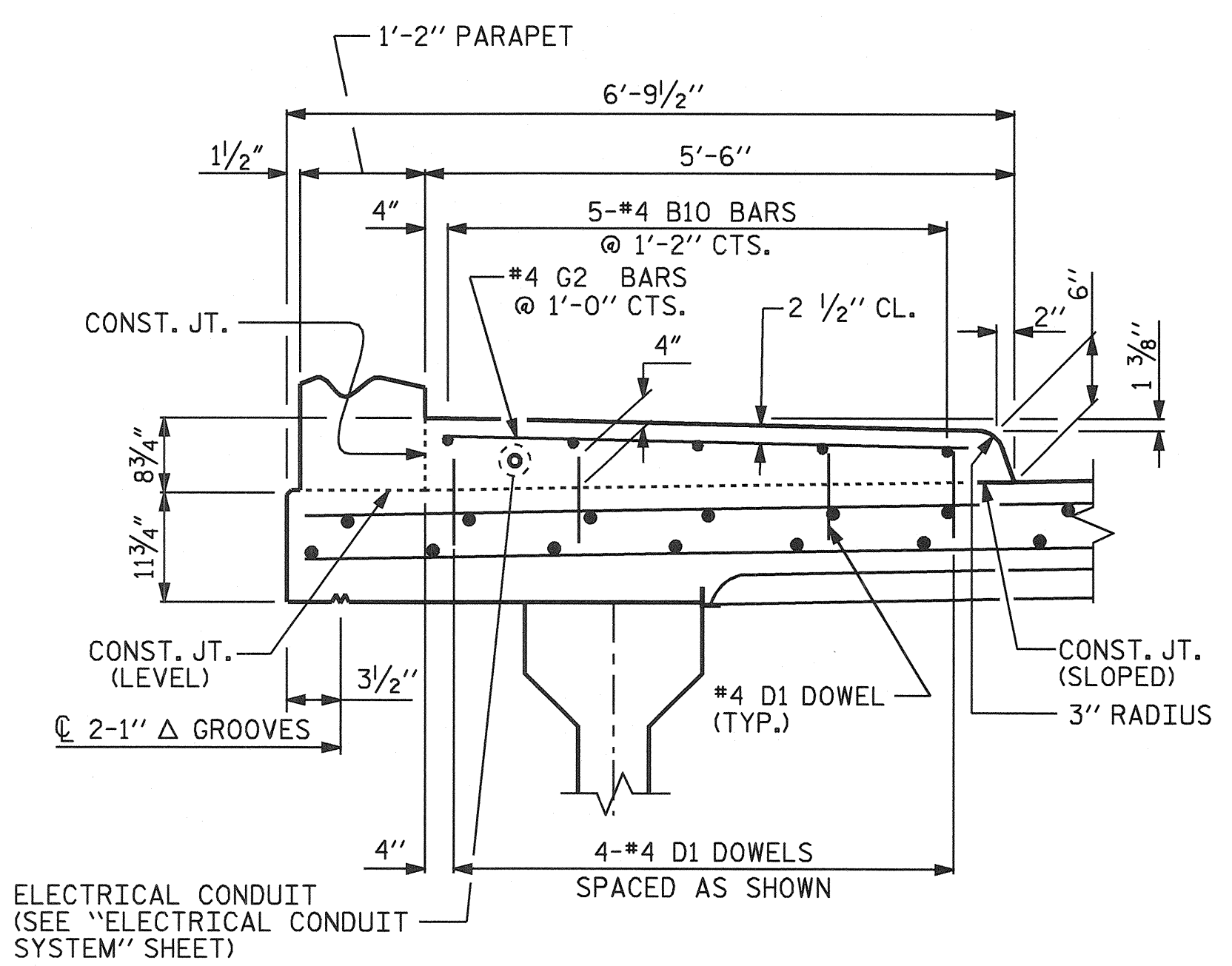


PLAN OF SIDEWALK

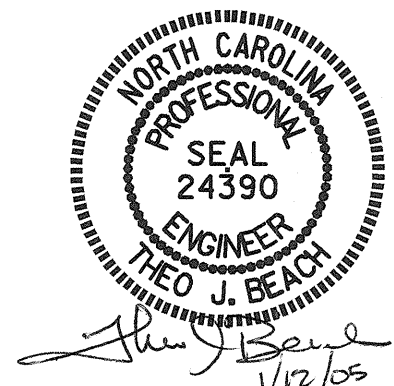


SECTION THRU SIDEWALK

NOTES:
 THE JOINT IN THE DECK AT THE END BENTS SHALL BE SAWED PRIOR TO THE CASTING OF THE SIDEWALKS.
 * THESE DOWELS ARE TO BE PLACED AFTER SAWING OF THE JOINT AT THE END BENTS. THE HOLES SHALL BE DRILLED AND THE DOWELS GROUTED IN PLACE.
 THE DOWELS (EXCEPT AS NOTED ABOVE) MAY BE PUSHED INTO GREEN CONCRETE AFTER SPAN HAS BEEN SCREEDED OFF.
 SIDEWALK IN A CONTINUOUS UNIT SHALL NOT BE CAST UNTIL ALL SLAB CONCRETE IN THE UNIT HAS BEEN CAST AND HAS REACHED A MINIMUM COMPRESSIVE STRENGTH OF 3000 PSI.
 ALL REINFORCING STEEL IN SIDEWALK SHALL BE EPOXY COATED.
 GROOVED CONTRACTION JOINTS, 1/2" IN DEPTH, SHALL BE TOOLED IN ALL EXPOSED FACES OF THE SIDEWALK IN ACCORDANCE WITH ARTICLE 825-10(B) OF THE STANDARD SPECIFICATIONS. THE CONTRACTION JOINTS SHALL BE LOCATED AT A SPACING OF 8 FT. TO 10 FT. BETWEEN EXPANSION JOINTS. NO CONTRACTION JOINT WILL BE REQUIRED FOR SEGMENTS LESS THAN 10 FT. IN LENGTH.

PROJECT NO. B-3652
GUILFORD COUNTY
 STATION: 21+87.50 -L-

STATE OF NORTH CAROLINA DEPARTMENT OF TRANSPORTATION RALEIGH					
SUPERSTRUCTURE SIDEWALK DETAILS					
REVISIONS					
NO.	BY:	DATE:	NO.	BY:	DATE:
1			3		
2			4		
SHEET NO.					S-22
TOTAL SHEETS					42



DRAWN BY: S.B. WILLIAMS DATE: 3-25-04
 CHECKED BY: P.C. BREWER DATE: 6-1-04