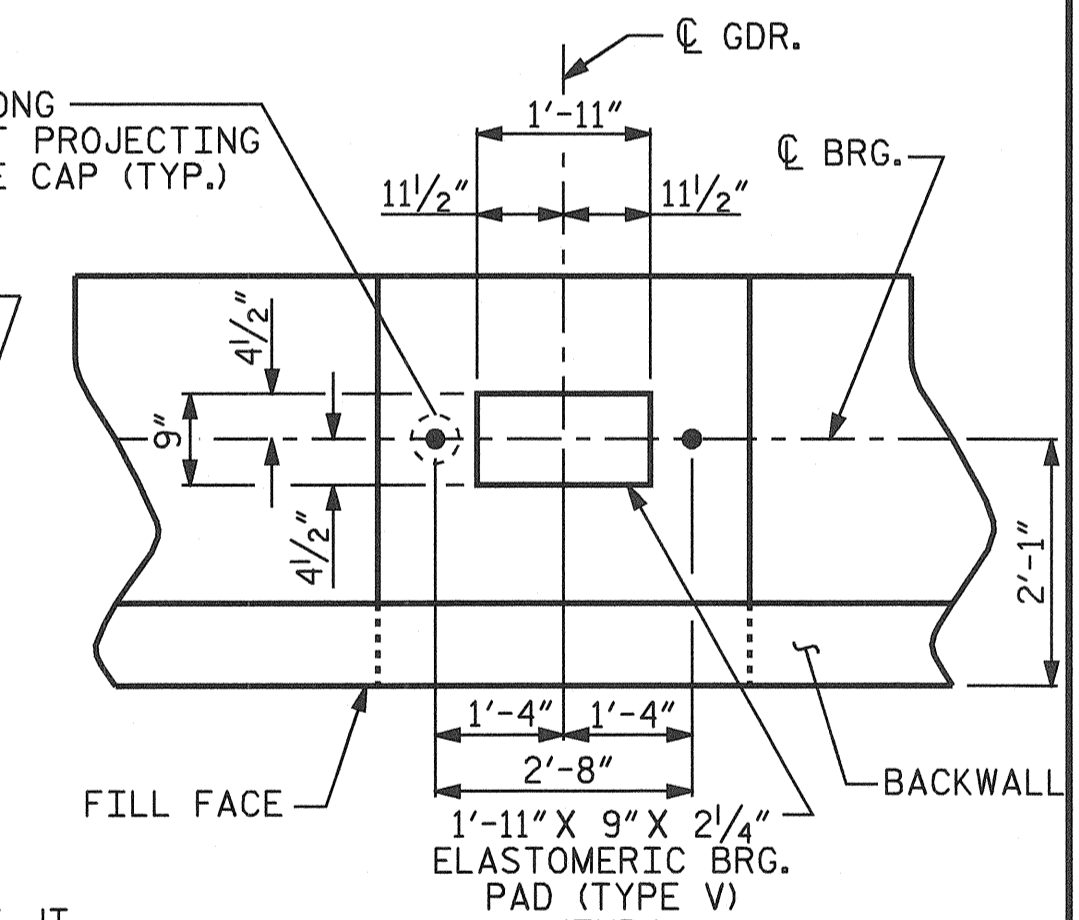
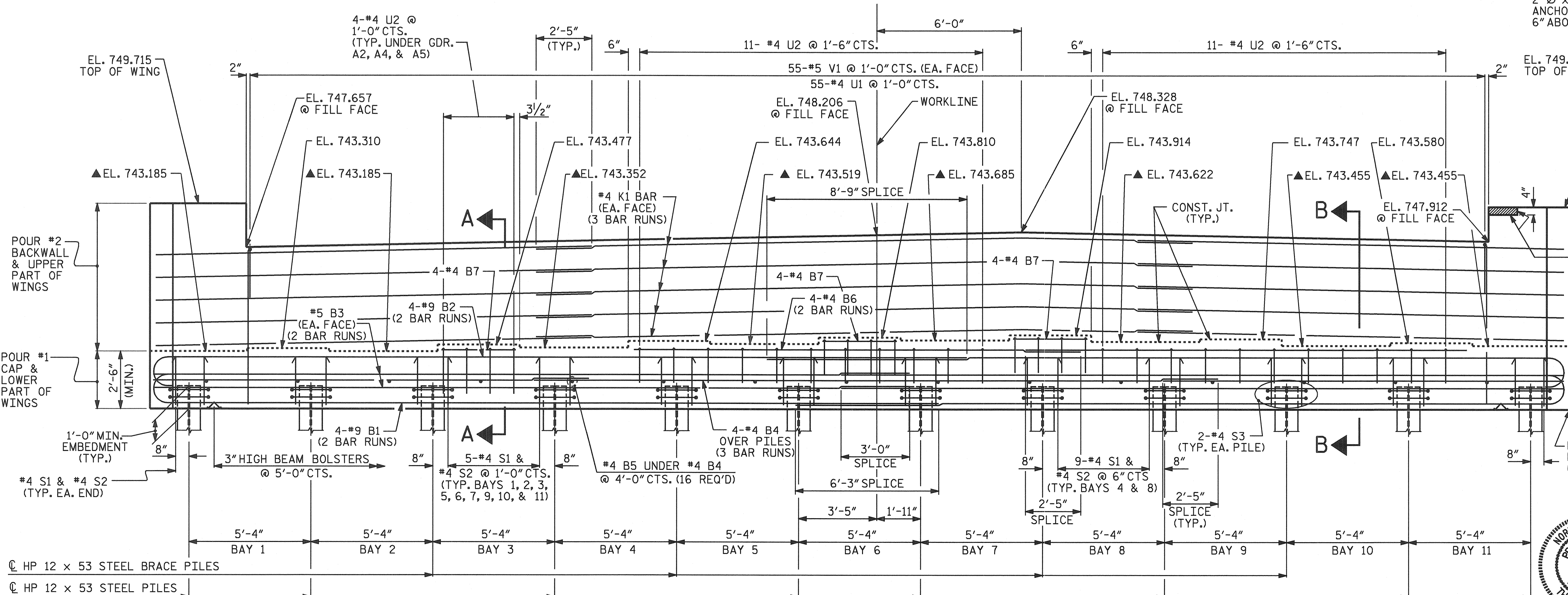


NOTES:
 STIRRUPS AND U2 BARS IN CAP MAY BE SHIFTED AS NECESSARY TO CLEAR ANCHOR BOLTS.
 #5 V1 BARS IN BACKWALL SHALL BE PLACED 2" CLEAR FROM TOP OF BACKWALL
 FOR EPOXY PROTECTIVE COATING, SEE SPECIAL PROVISIONS.
 BACKWALL SHALL BE PLACED BEFORE APPLYING THE EPOXY PROTECTIVE COATING.
 ▲ FOR LOCATION OF ELEVATIONS BETWEEN BUILD-UPS, SEE SECTION A-A, SHEET 3 OF 3.
 CONTINUED ON SHEET 3 OF 3.



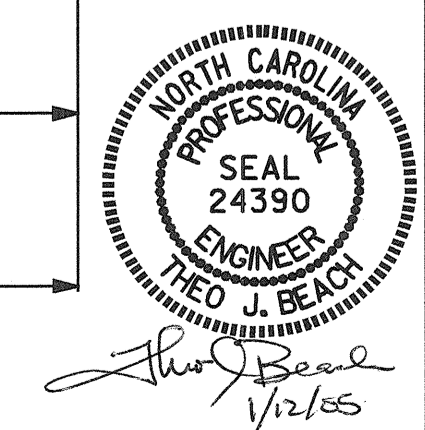
PROJECT NO. B-3652
 GUILFORD COUNTY
 STATION: 21+87.50 -L-
 SHEET 1 OF 3

STATE OF NORTH CAROLINA
 DEPARTMENT OF TRANSPORTATION
 RALEIGH

SUBSTRUCTURE
 END BENT No. 1

DRAWN BY : C. H. SIMPSON DATE : 06/21/04
 CHECKED BY : P. C. BREWER DATE : 06/28/04

11-JAN-2005 08:12
 E:\sqd\w8 wor\k\b3652\csimpson\Micrstation\B3652.sd.EB.dgn
 pbrewer



REVISIONS						SHEET NO.	
NO.	BY:	DATE:	NO.	BY:	DATE:	S-24	
1			3			TOTAL SHEETS	
2			4			42	