

PLAN

**NOTES:**

STIRRUPS AND U1 BARS IN CAP MAY BE SHIFTED AS NECESSARY TO CLEAR ANCHOR BOLTS.

HOOKS ON "V" BARS MAY BE TURNED AS NECESSARY FOR PLACING REINFORCING STEEL.

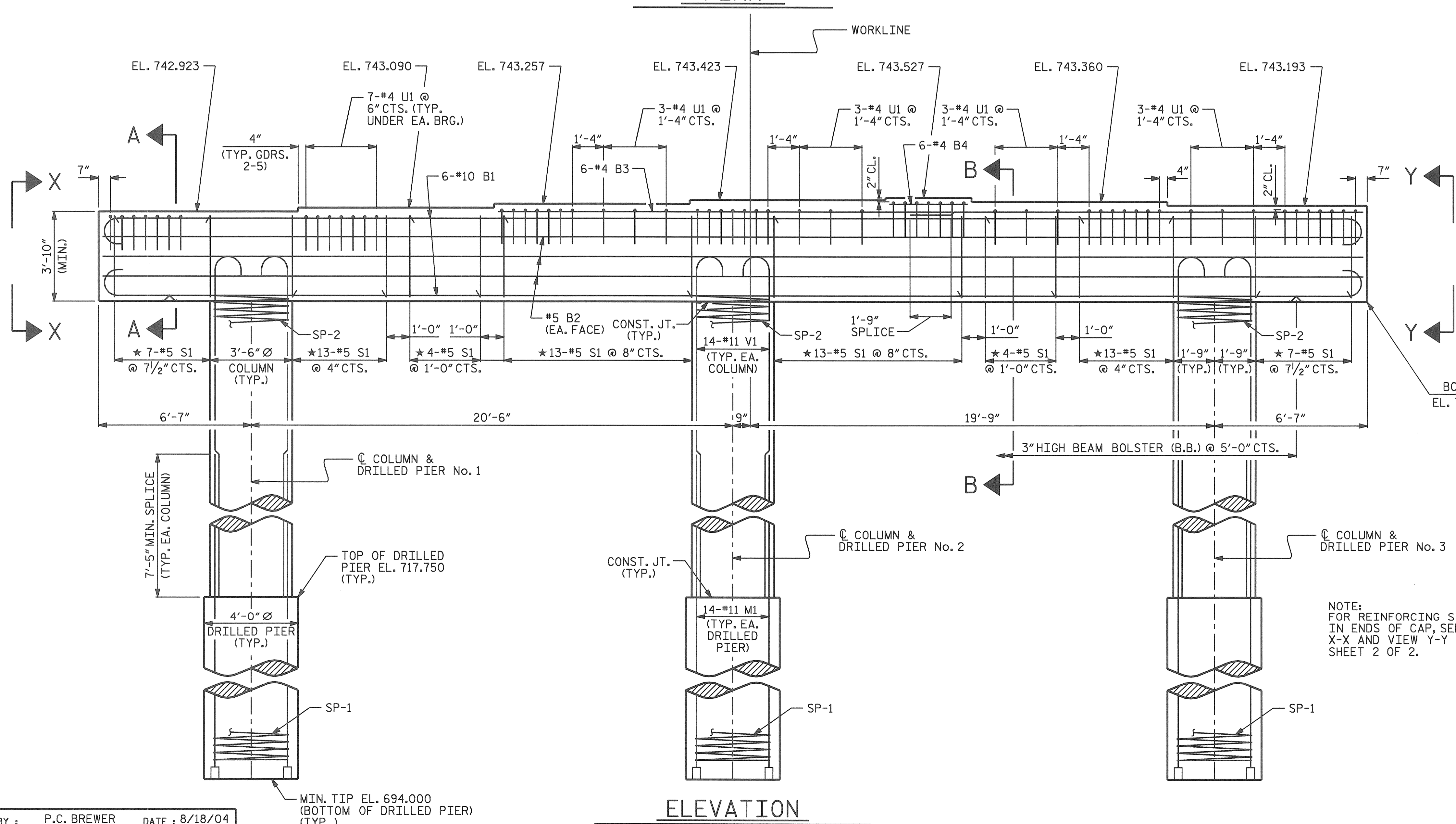
ALL STEEL IN THE DRILLED PIERS IS INCLUDED IN THE PAY ITEMS FOR "REINFORCING STEEL" AND "SPIRAL COLUMN REINFORCING STEEL".

THE CONTRACTOR'S ATTENTION IS CALLED TO THE FACT THAT THE LONGITUDINAL REINFORCEMENT FOR THE DRILLED PIERS IS DETAILED WITH 3 FEET OF EXTRA LENGTH.

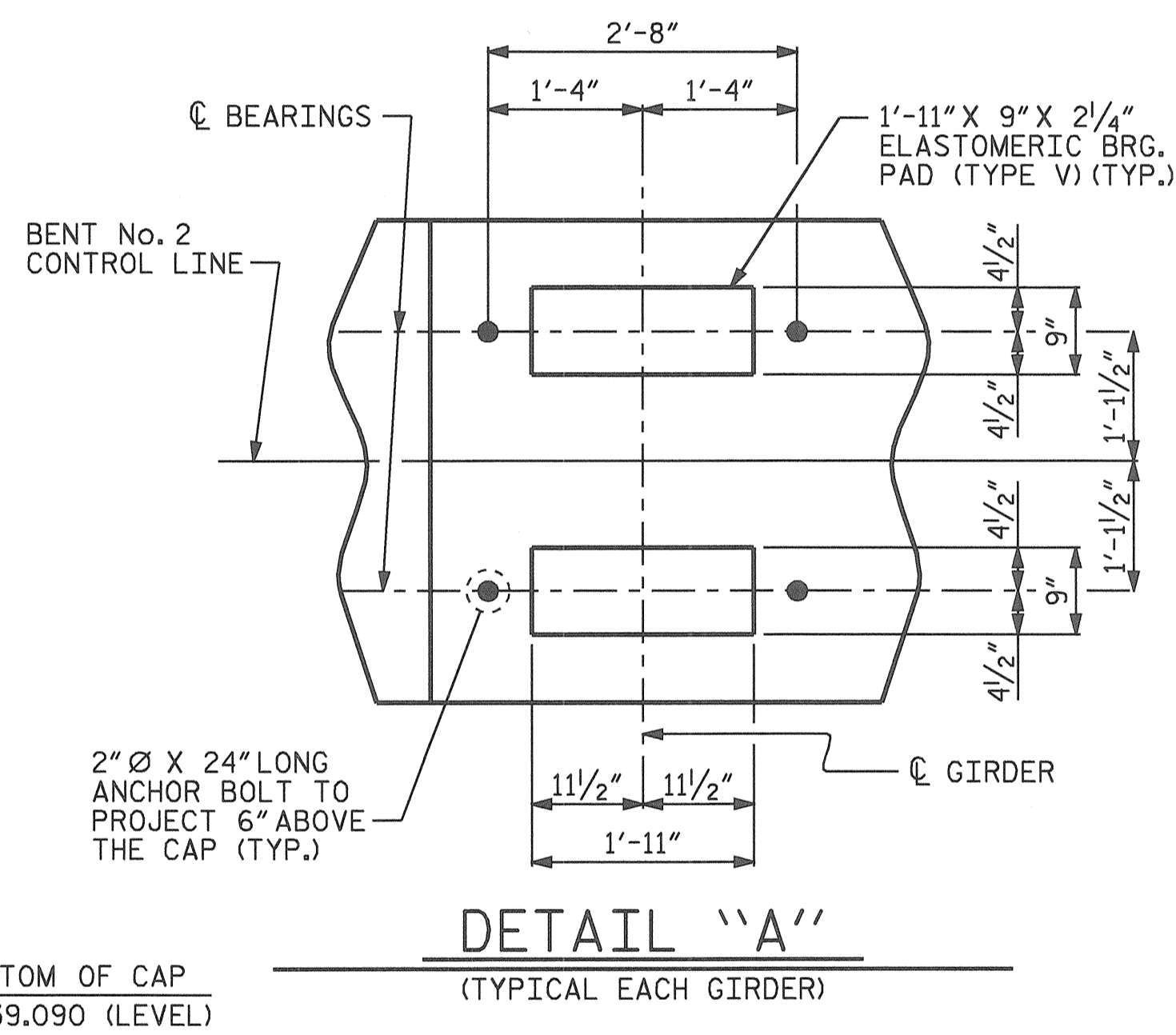
FOR DRILLED PIERS, SEE SPECIAL PROVISIONS.

★ INVERT ALTERNATE STIRRUPS AS SHOWN.

FOR PERMANENT STEEL CASING, SEE SPECIAL PROVISION FOR DRILLED PIERS.



ELEVATION

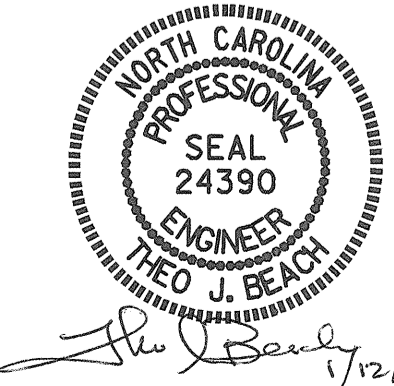


DETAIL "A"

(TYPICAL EACH GIRDER)

PROJECT NO. B-3652  
GUILFORD COUNTY  
 STATION: 21+87.50 -L-

SHEET 1 OF 2  
 STATE OF NORTH CAROLINA  
 DEPARTMENT OF TRANSPORTATION  
 RALEIGH  
 SUBSTRUCTURE  
 BENT No. 2



DRAWN BY: P.C. BREWER DATE: 8/18/04  
 CHECKED BY: S.B. WILLIAMS DATE: 9/23/04

NOTE:  
 FOR REINFORCING STEEL  
 IN ENDS OF CAP, SEE VIEW  
 X-X AND VIEW Y-Y ON  
 SHEET 2 OF 2.

REVISIONS					SHEET NO. S-29 TOTAL SHEETS 42
NO.	BY:	DATE:	NO.	BY:	
1			3		
2			4		