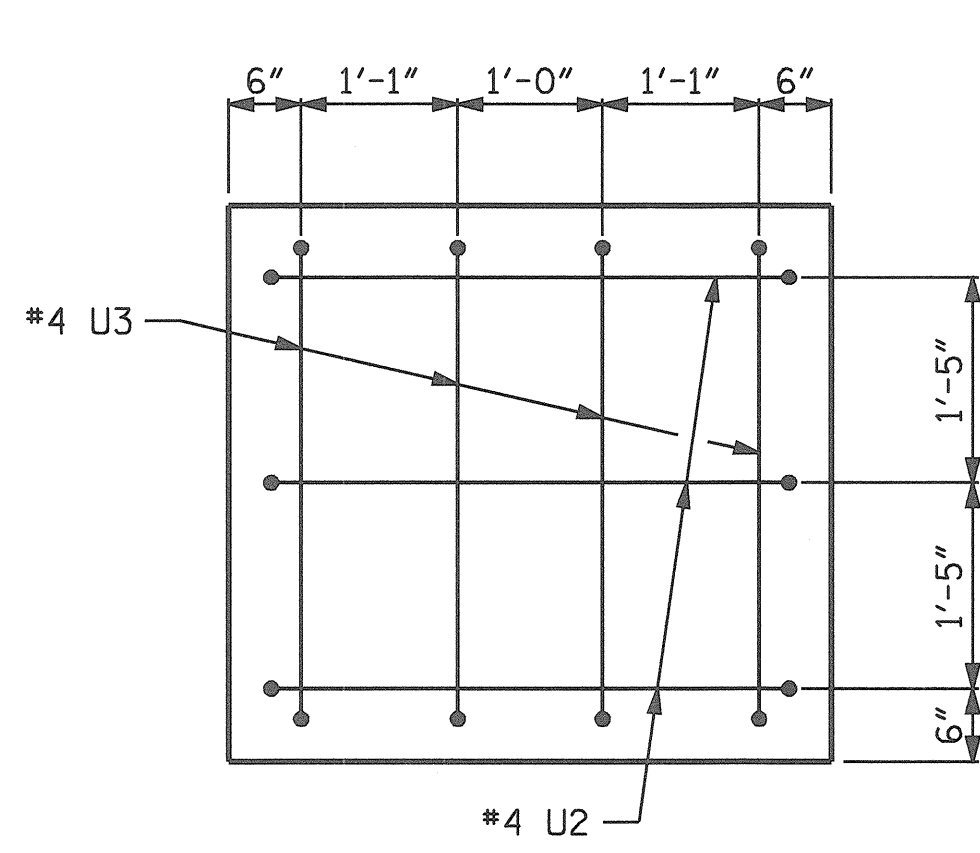
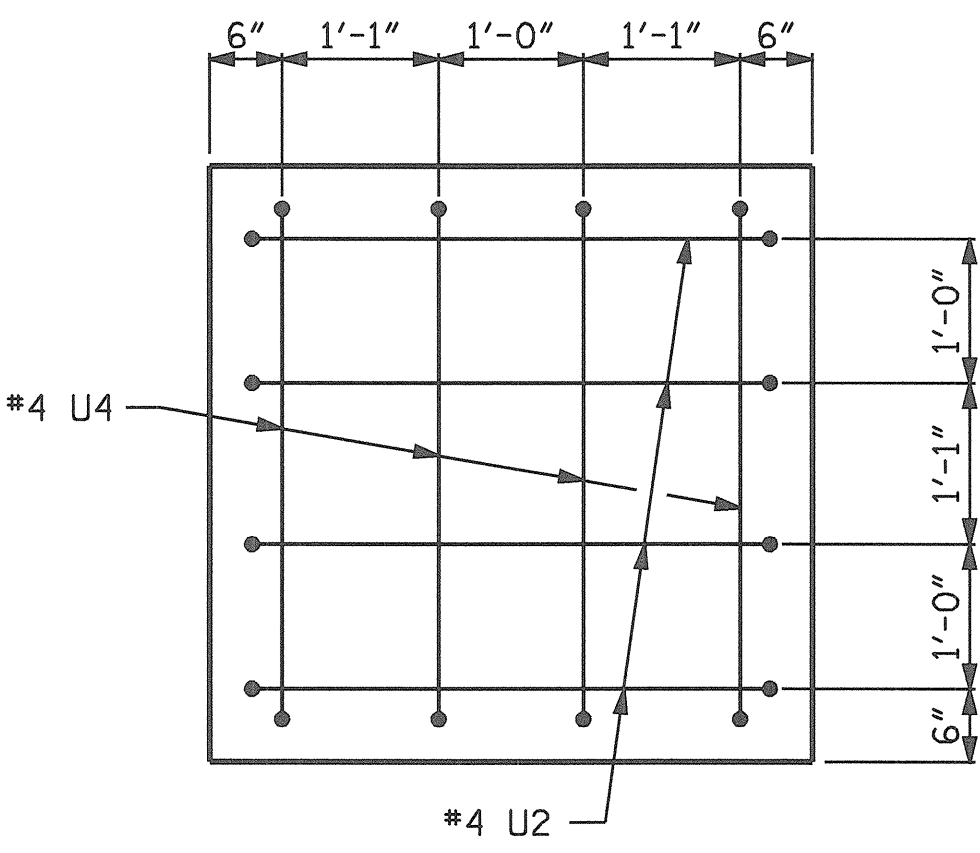


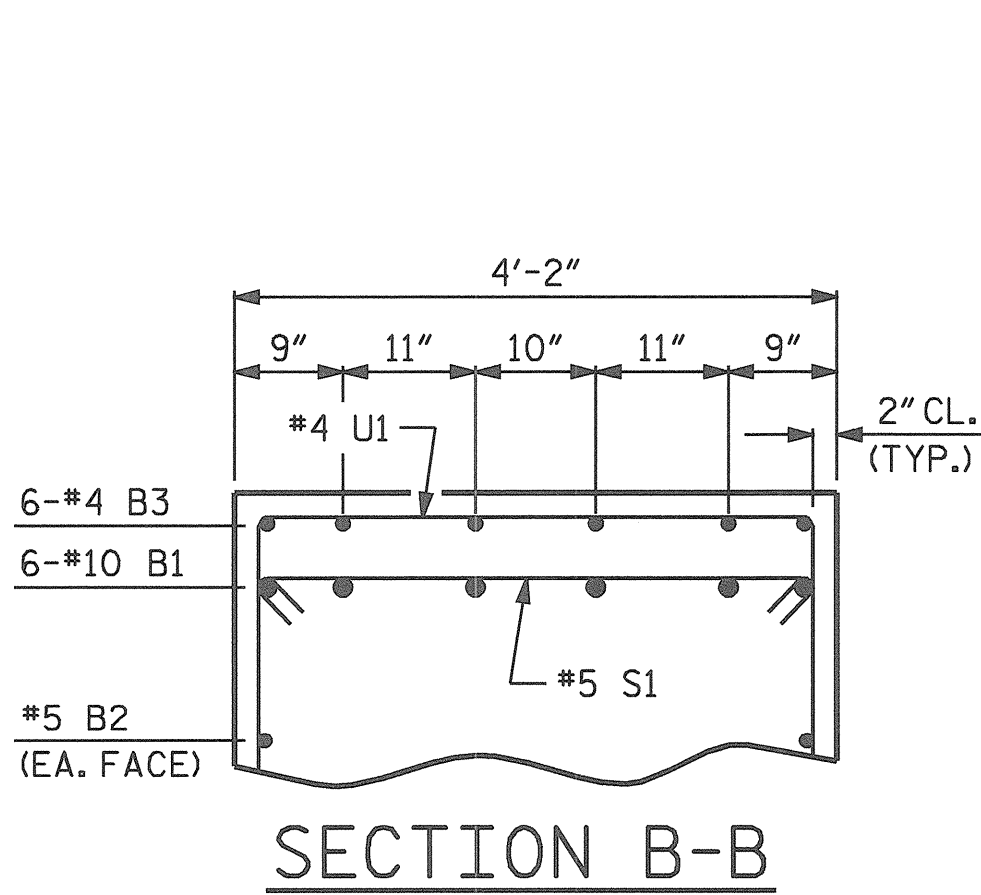
PLAN OF DRILLED PIERS



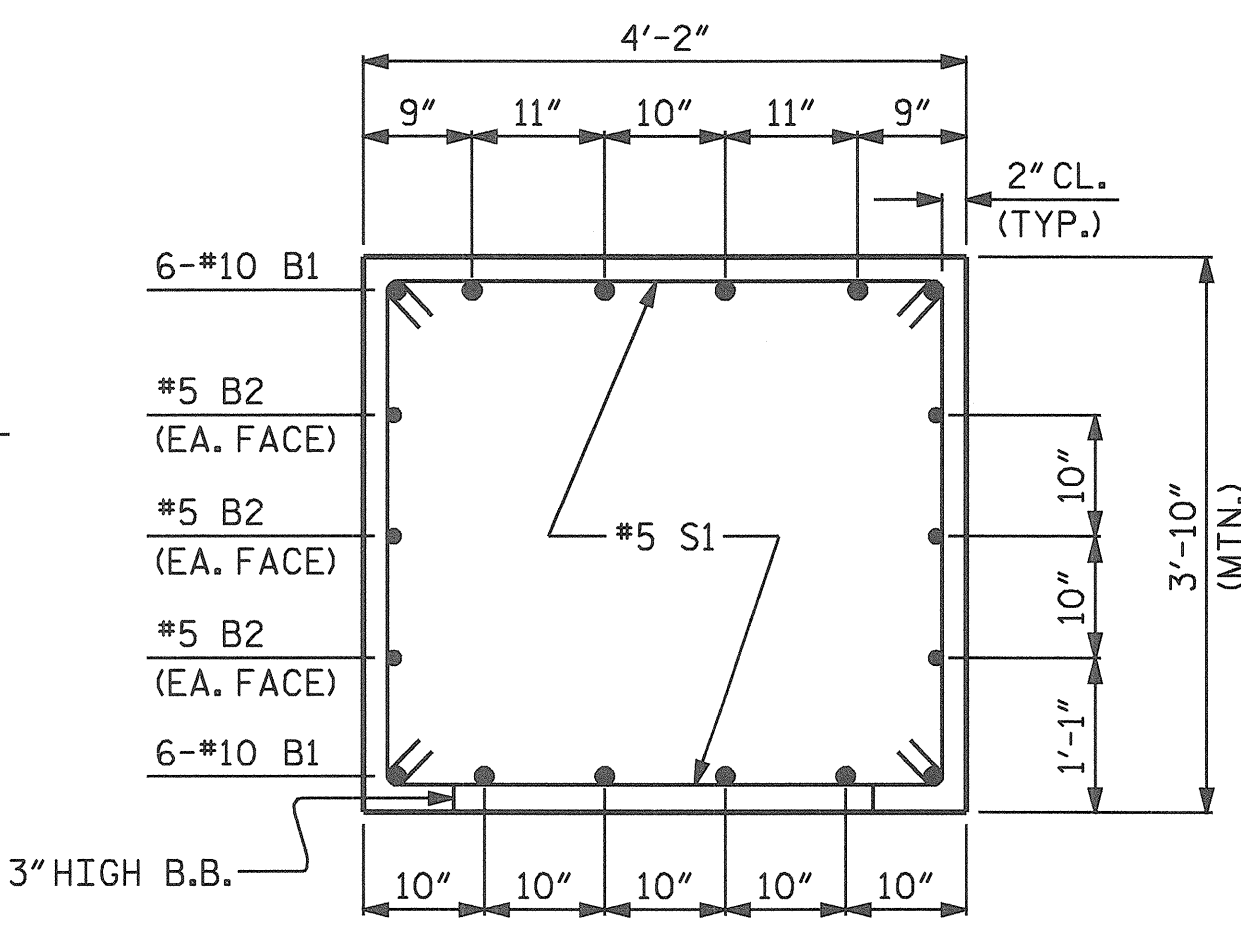
VIEW X-X



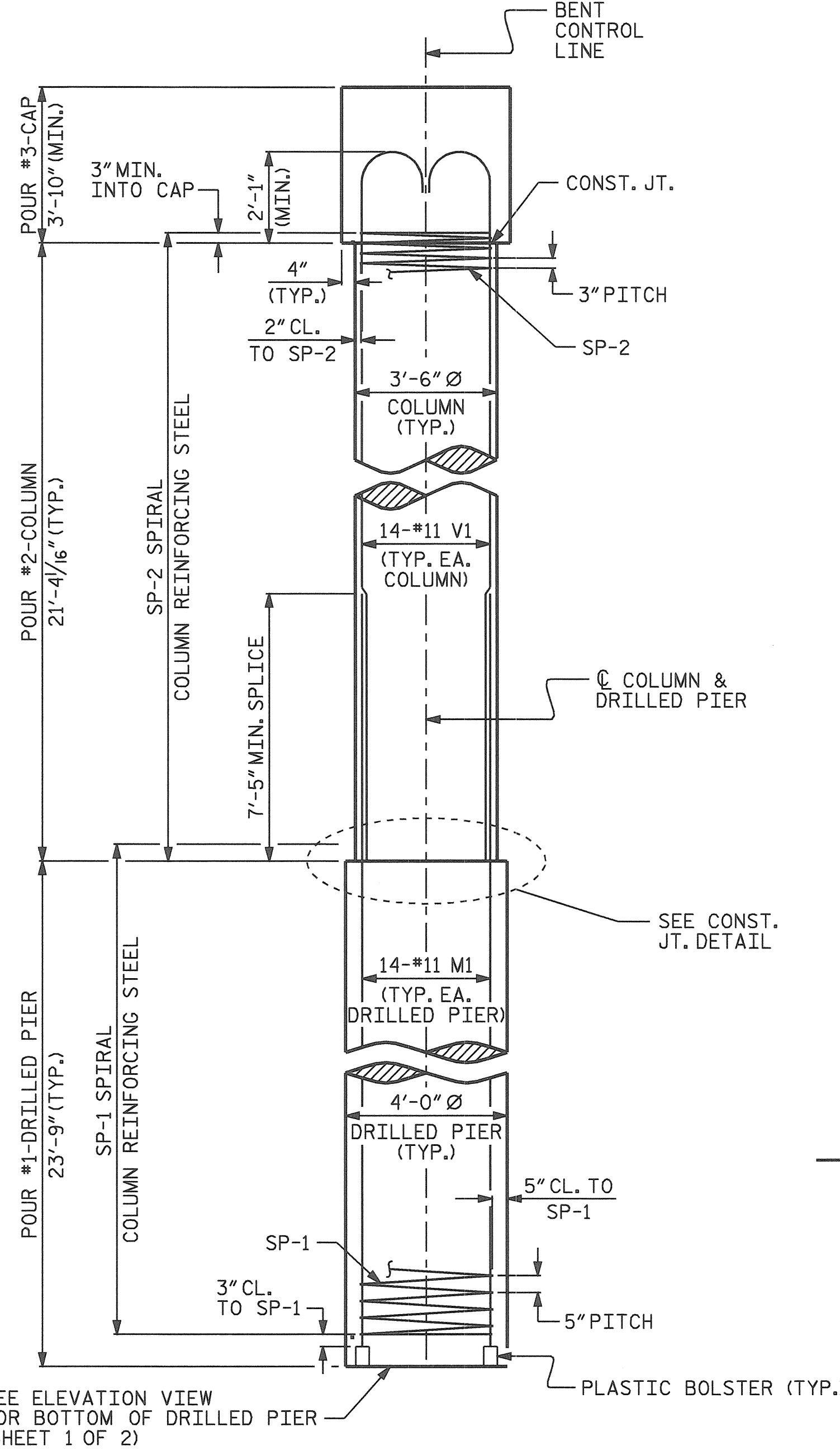
VIEW Y-Y



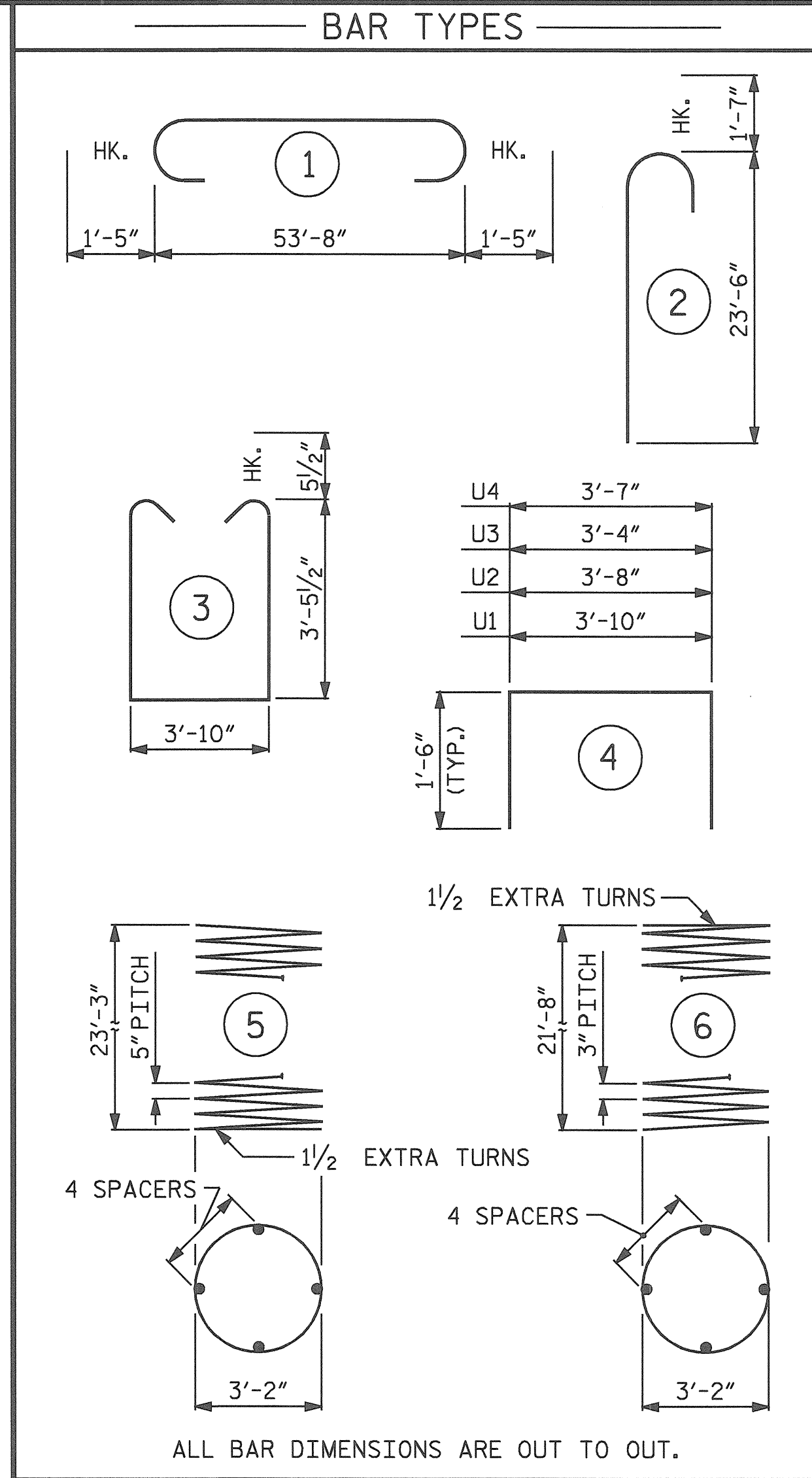
SECTION B-B



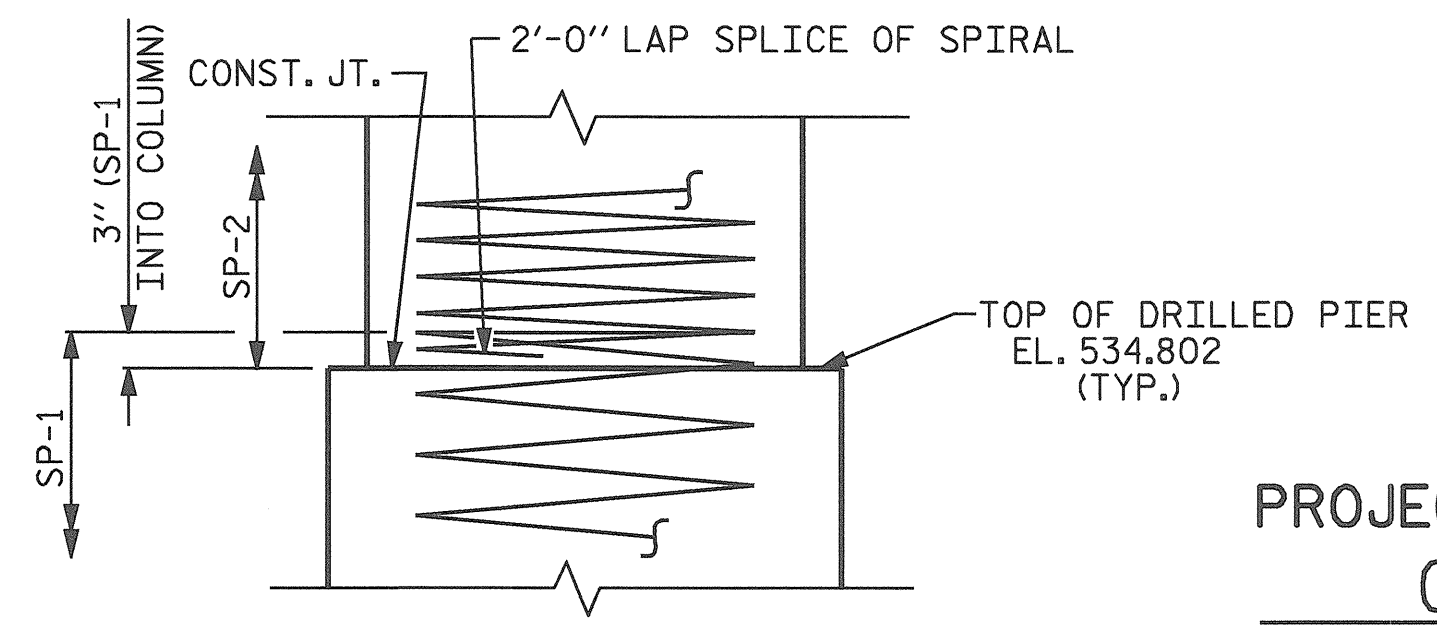
SECTION A-A



END ELEVATION



CONSTRUCTION JOINT DETAIL



BILL OF MATERIAL

BENT No. 2					
BAR NO.	SIZE	TYPE	LENGTH	WEIGHT	
B1	12	#10	1	56'-6"	2917
B2	6	#5	STR	53'-10"	337
B3	12	#4	STR	19'-4"	155
B4	6	#4	STR	3'-4"	13
M1	42	#11	STR	33'-8"	7513
S1	74	#5	3	11'-8"	900
U1	61	#4	4	6'-10"	278
U2	7	#4	4	6'-8"	31
U3	4	#4	4	6'-4"	17
U4	4	#4	4	6'-7"	18
V1	42	#11	2	25'-1"	5597
REINFORCING STEEL					17,776 LBS.
SP-1	3	*	5	568'-1"	1778
SP-2	3	**	6	874'-1"	1752
SPIRAL COLUMN REINFORCING STEEL					3,530 LBS.

\* THE SP-1 SPIRAL REINFORCING STEEL SHALL BE W31 OR D-31 COLD DRAWN WIRE OR #5 PLAIN OR DEFORMED BAR.

\*\* THE SP-2 SPIRAL REINFORCING STEEL SHALL BE W20 OR D-20 COLD DRAWN WIRE OR #4 PLAIN OR DEFORMED BAR.

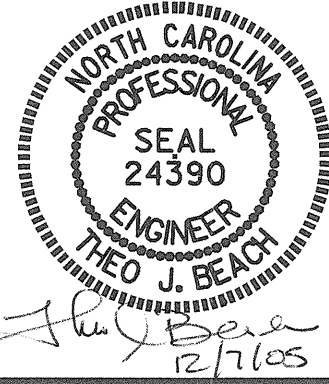
CLASS A CONCRETE (C.Y.)		
POUR #2 (COLUMN)		= 22.8
POUR #3 (CAP)		= 34.5
TOTAL		= 57.3

DRILLED PIERS:		
DRILLED PIER CONCRETE (C.Y.)		
POUR #1 (DRILLED PIER)		= 33.2
4'-0" Ø DRILLED PIER IN SOIL		= 40.3 LIN. FT.
4'-0" Ø DRILLED PIER NOT IN SOIL		= 31.0 LIN. FT.
PERMANENT STEEL CASING FOR 4'-0" Ø DRILLED PIER		= 47.3 LIN. FT.
CSL TUBES		= 315.0 LIN. FT.

PROJECT NO. B-3652  
 GUILFORD COUNTY  
 STATION: 21+87.50 -L-

SHEET 2 OF 2

STATE OF NORTH CAROLINA DEPARTMENT OF TRANSPORTATION RALEIGH					
SUBSTRUCTURE BENT No. 2					
REVISIONS					
NO.	BY:	DATE:	NO.	BY:	DATE:
1			3		
2			4		



DRAWN BY: P.C. BREWER DATE: 8/18/04  
 CHECKED BY: S.B. WILLIAMS DATE: 9/23/04