

ELEVATION

PVC PIPE TO EXTEND THRU BACKWALL, COLLAR AND EXTEND WITH 18" RCP TO CATCH BASIN. NO PIPE JOINTS WILL BE ALLOWED UNDER APPROACH SLAB. FOR CATCH BASIN, SEE ROADWAY PLANS. (ROADWAY PAY ITEM AND DETAIL)

NOTES:

THE CONTRACTOR SHALL SUBMIT FOR ACCEPTANCE, PRIOR TO PURCHASE, A PLAN FOR THE 12" PVC DRAINAGE SYSTEM, INCLUDING ATTACHMENTS TO THE BRIDGE SUPERSTRUCTURE.

SEE SUPERSTRUCTURE "PLAN OF SPANS" FOR LOCATION OF 4" DECK DRAINS.

THE CONTRACTOR SHALL DETERMINE THE QUANTITIES OF FITTINGS, PIPE LENGTHS, AND ATTACHMENTS NECESSARY FOR THE STRUCTURE DRAINAGE SYSTEM.

FOR "STRUCTURE DRAINAGE SYSTEM", SEE SPECIAL PROVISIONS.

DRAIN SYSTEM WILL BE PAID FOR UNDER THE PAY ITEM "STRUCTURE DRAINAGE SYSTEM - LUMP SUM".

BOLTS, NUTS, AND WASHERS SHALL BE HIGH STRENGTH AND GALVANIZED IN ACCORDANCE WITH THE STANDARD SPECIFICATIONS.

CONCRETE INSERTS SHALL BE OF AN APPROVED GALVANIZED TYPE HAVING A MINIMUM WORKING LOAD TENSION CAPACITY OF 2.5 KIPS.

IN LIEU OF CASTING INSERTS INTO THE DECK, RODS MAY BE ADHESIVELY ANCHORED TO THE DECK. FOR ADHESIVELY ANCHORED ANCHOR BOLTS OR DOWELS, SEE SPECIAL PROVISIONS.

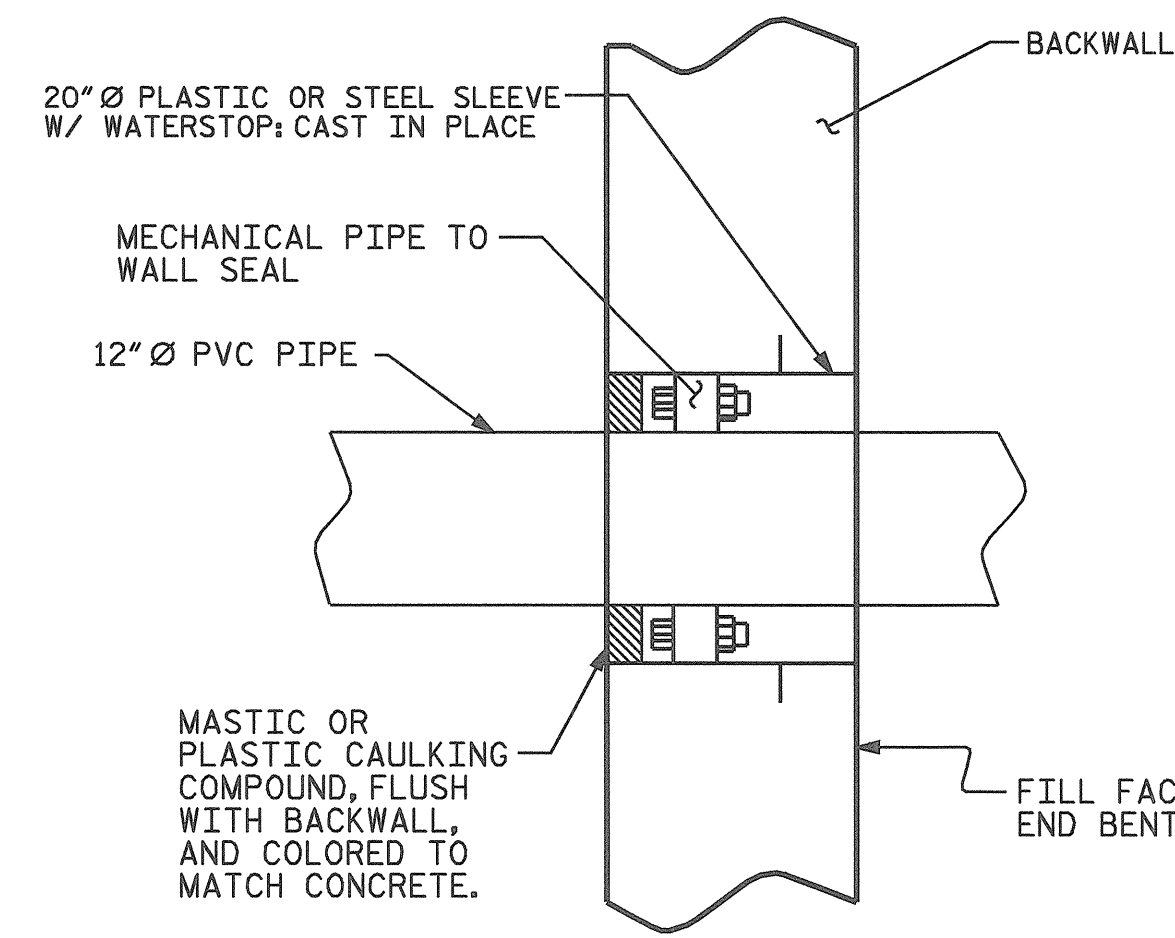
PIPE AND FITTINGS SHALL BE PVC, SDR 35, ASTM D 3034.

PIPE JOINTS SHALL BE ELASTOMERIC TYPE.

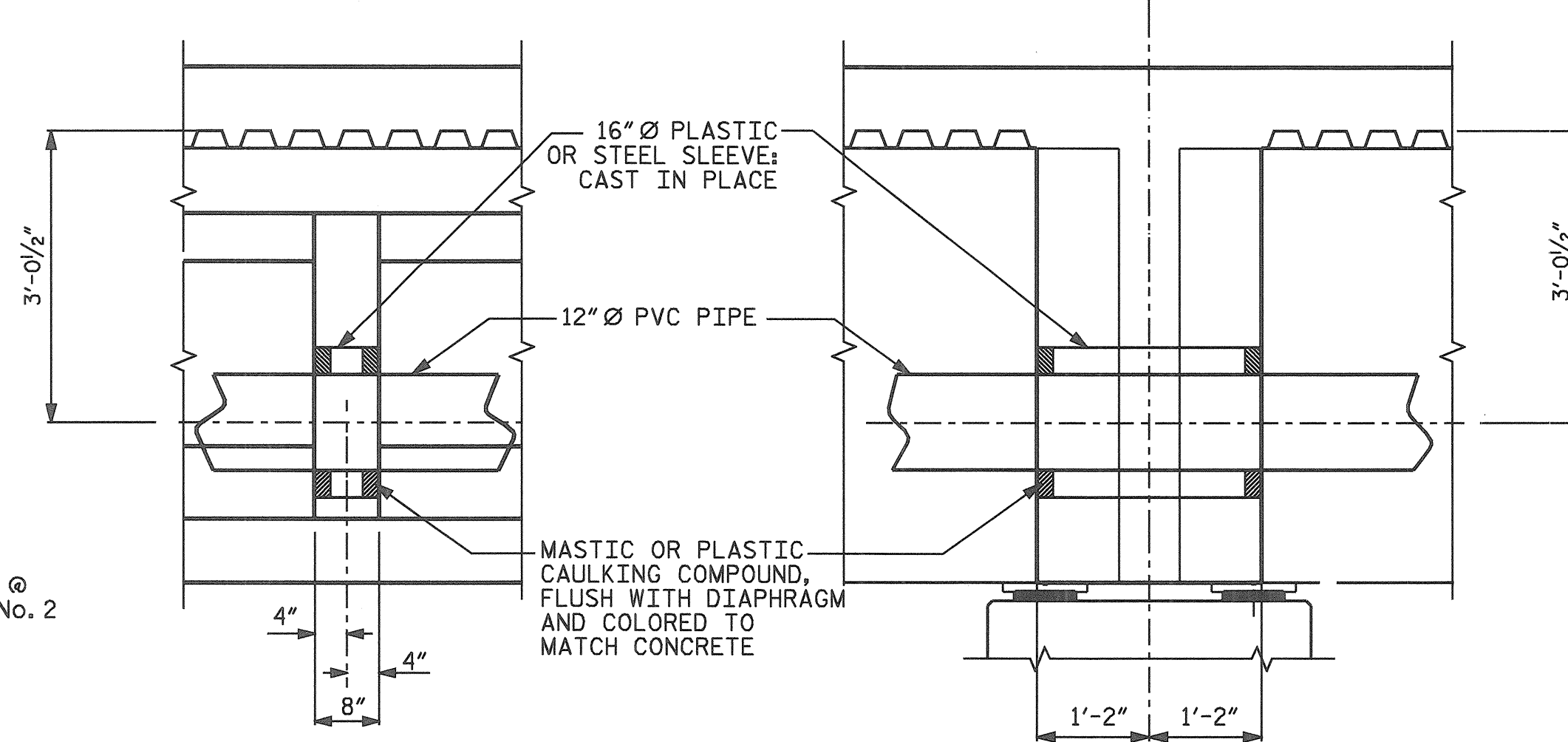
FITTING JOINTS SHALL BE SOLVENT CEMENT TYPE.

REINFORCING STEEL IN INTERMEDIATE AND BENT DIAPHRAGMS BETWEEN GIRDER #1 AND GIRDER #2 SHALL BE MOVED AS NECESSARY FOR INSTALLATION OF PIPE SLEEVE.

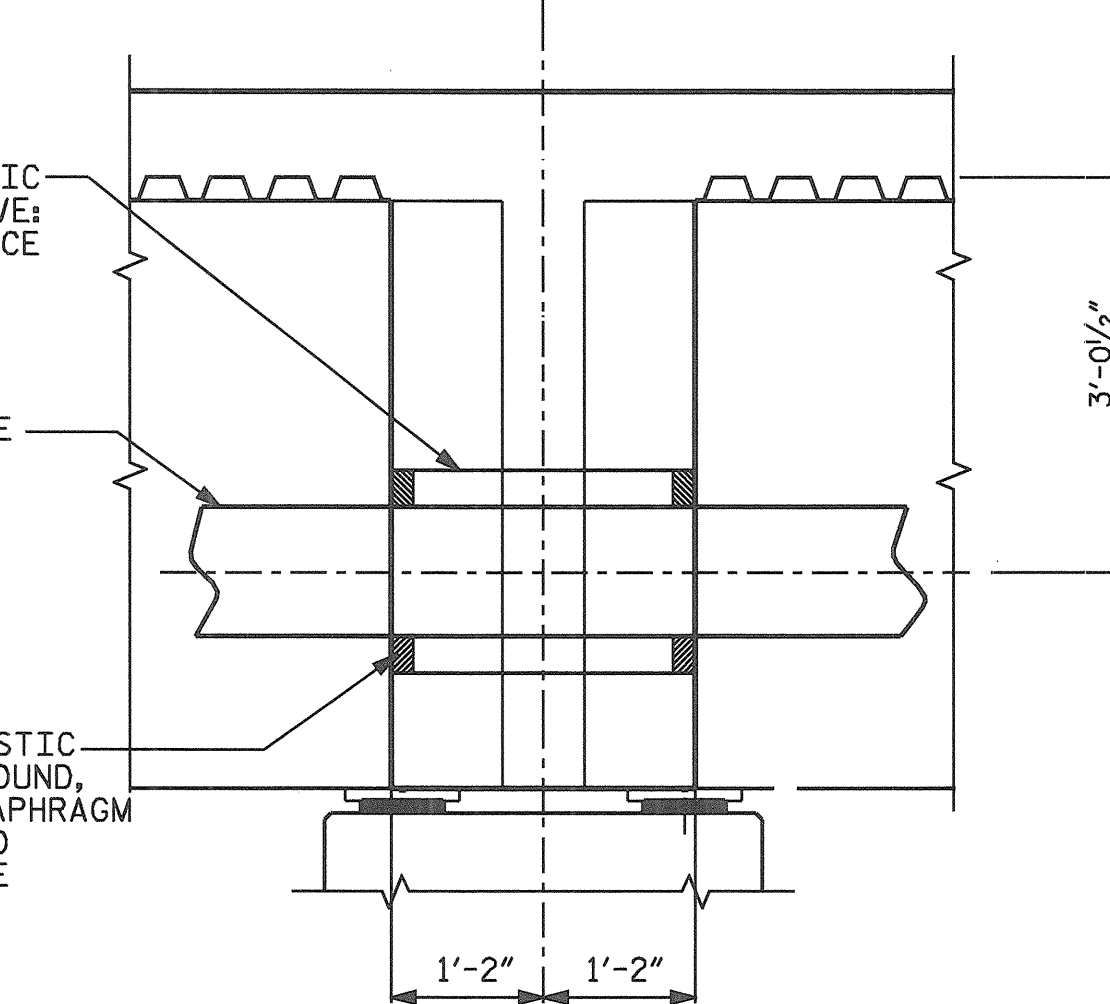
PROJECT NO. B-3652
GUILFORD COUNTY
 STATION 21+87.50 -L-



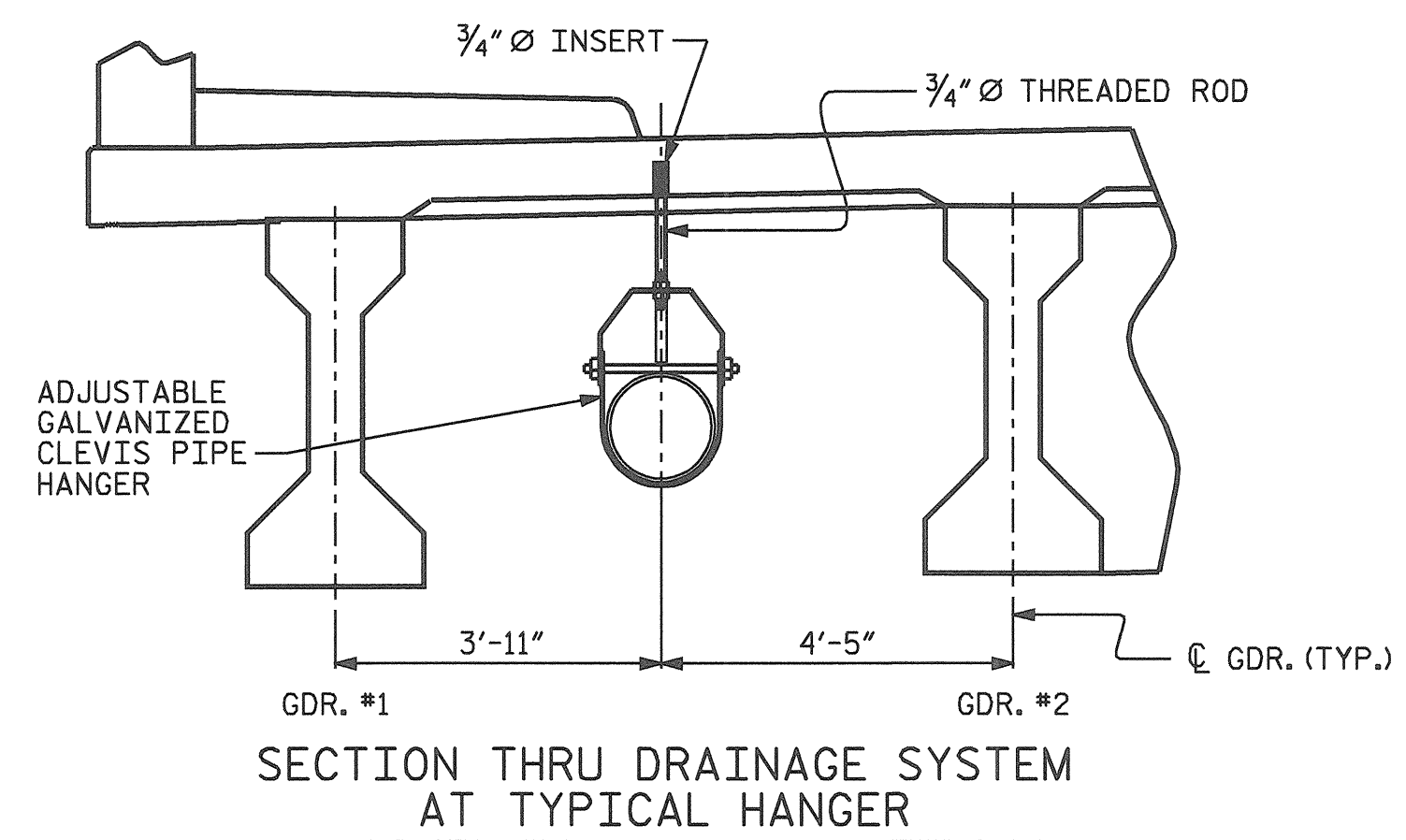
DETAIL OF PIPE THRU BACKWALL



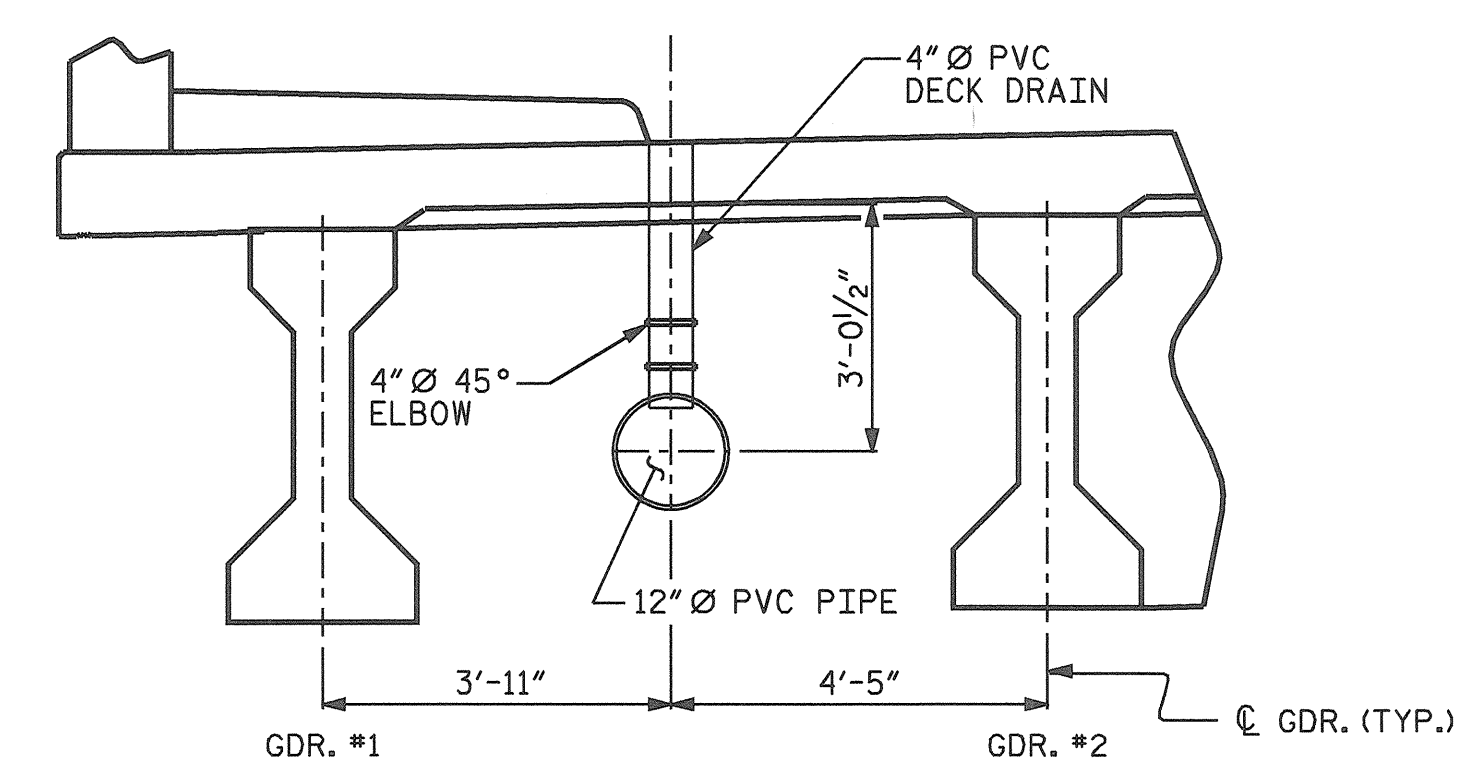
DETAIL OF PIPE THRU INTERMEDIATE DIAPHRAGM
 SEE SECTION VIEW FOR HORIZONTAL ORIENTATION



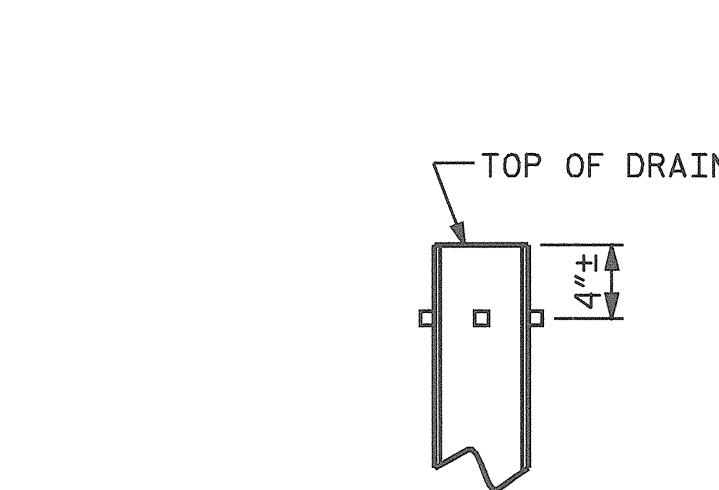
DETAIL OF PIPE THRU BENT DIAPHRAGM
 SEE SECTION VIEW FOR HORIZONTAL ORIENTATION



SECTION THRU DRAINAGE SYSTEM AT TYPICAL HANGER

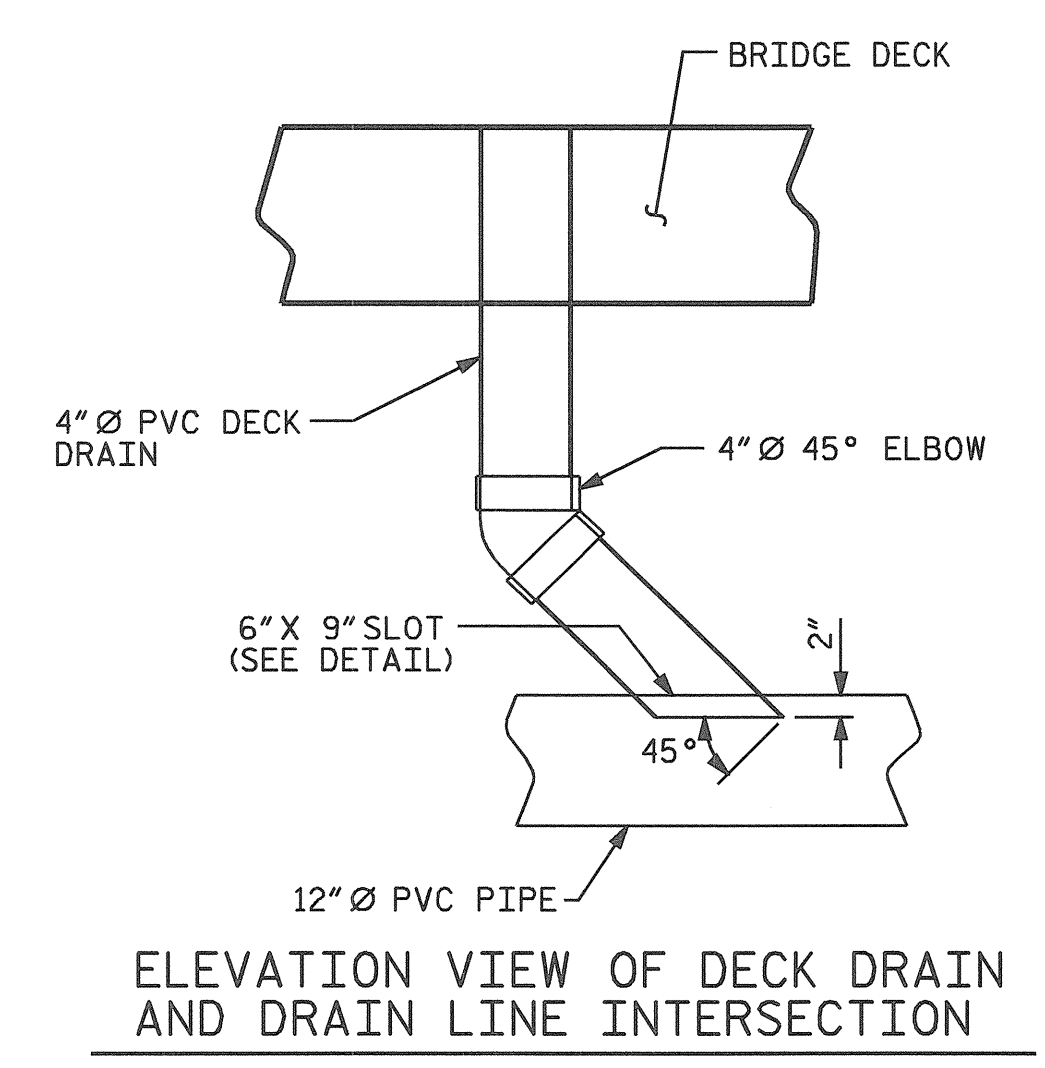


SECTION THRU DRAINAGE SYSTEM AT 4" DECK DRAINS

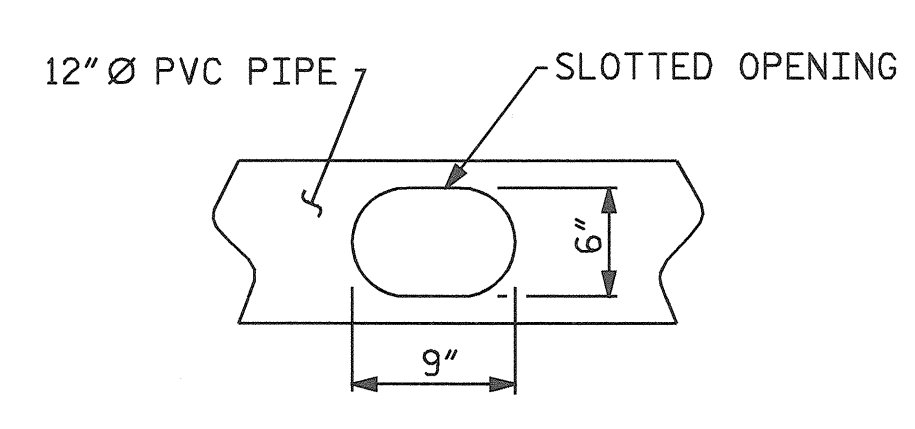


PIPE DETAIL
 (16 DRAINS REQ'D)

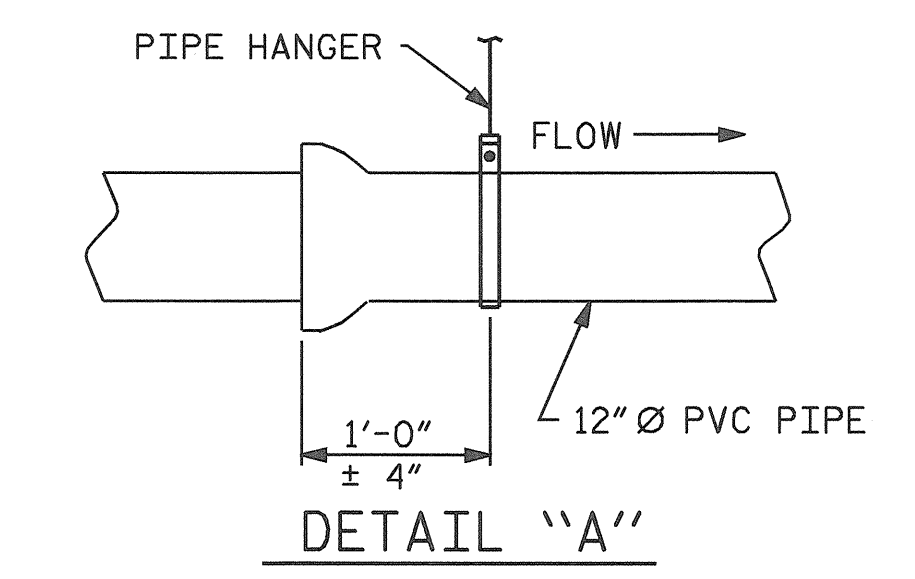
TOP OF FLOOR DRAINS TO BE SET 3/8" BELOW SURFACE OF SLAB.
 4 - 1/2" SQUARE LUGS TO BE GLUED TO THE P.V.C. PLASTIC PIPE AT EQUAL SPACES AROUND THE PIPE DRAIN APPROXIMATELY 4" FROM THE TOP OF THE PIPE.



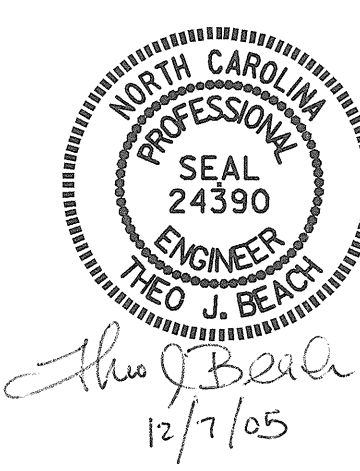
ELEVATION VIEW OF DECK DRAIN AND DRAIN LINE INTERSECTION



SLOT DETAIL



DETAIL "A"



DRAWN BY : P.C. BREWER DATE : 4/22/04
 CHECKED BY : THEO BEACH DATE : 12/04

07-DEC-2005 08:31
 R:\STRUCT\21\B3652\pbrw\MICROS\B3652.DWG
 tbeach

STATE OF NORTH CAROLINA DEPARTMENT OF TRANSPORTATION RALEIGH					
STRUCTURE DRAINAGE SYSTEM					
REVISIONS					
NO.	BY:	DATE:	NO.	BY:	DATE:
1			3		
2			4		

SHEET NO.
 S-35
 TOTAL SHEETS
 42