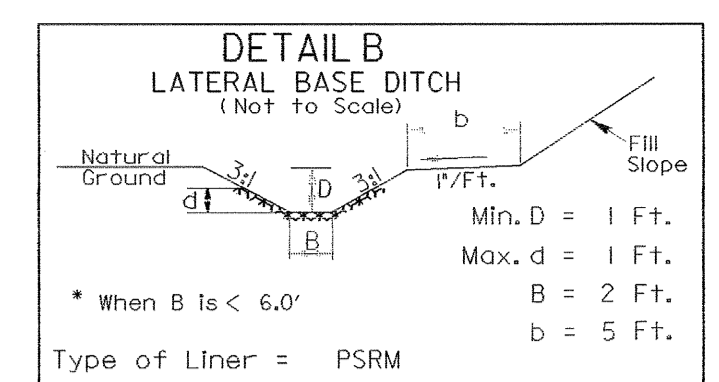


NOTE:
UTILIZE SPECIAL STILLING BASIN, AND TEMPORARY ROCK SEDIMENT DAM TYPE - B AS STILLING BASIN, WHERE APPLICABLE.

NOTE:
PLACE TEMPORARY ROCK SEDIMENT DAMS TYPE - B AND TEMPORARY ROCK SILT CHECKS TYPE - A AT DRAINAGE OUTLETS.

 ENVIRONMENTALLY SENSITIVE AREA
SEE PROJECT SPECIAL PROVISIONS

PERMANENT SOIL REINFORCEMENT MAT (PSRM)



STA. 19+50+/- TO STA. 20+85+/- RT
EST. 58 CY D.D.E.
EST. 130 SY PSRM

STA. 22+80+/- TO STA. 25+30+/- RT
EST. 102 CY D.D.E.
EST. 230 SY PSRM

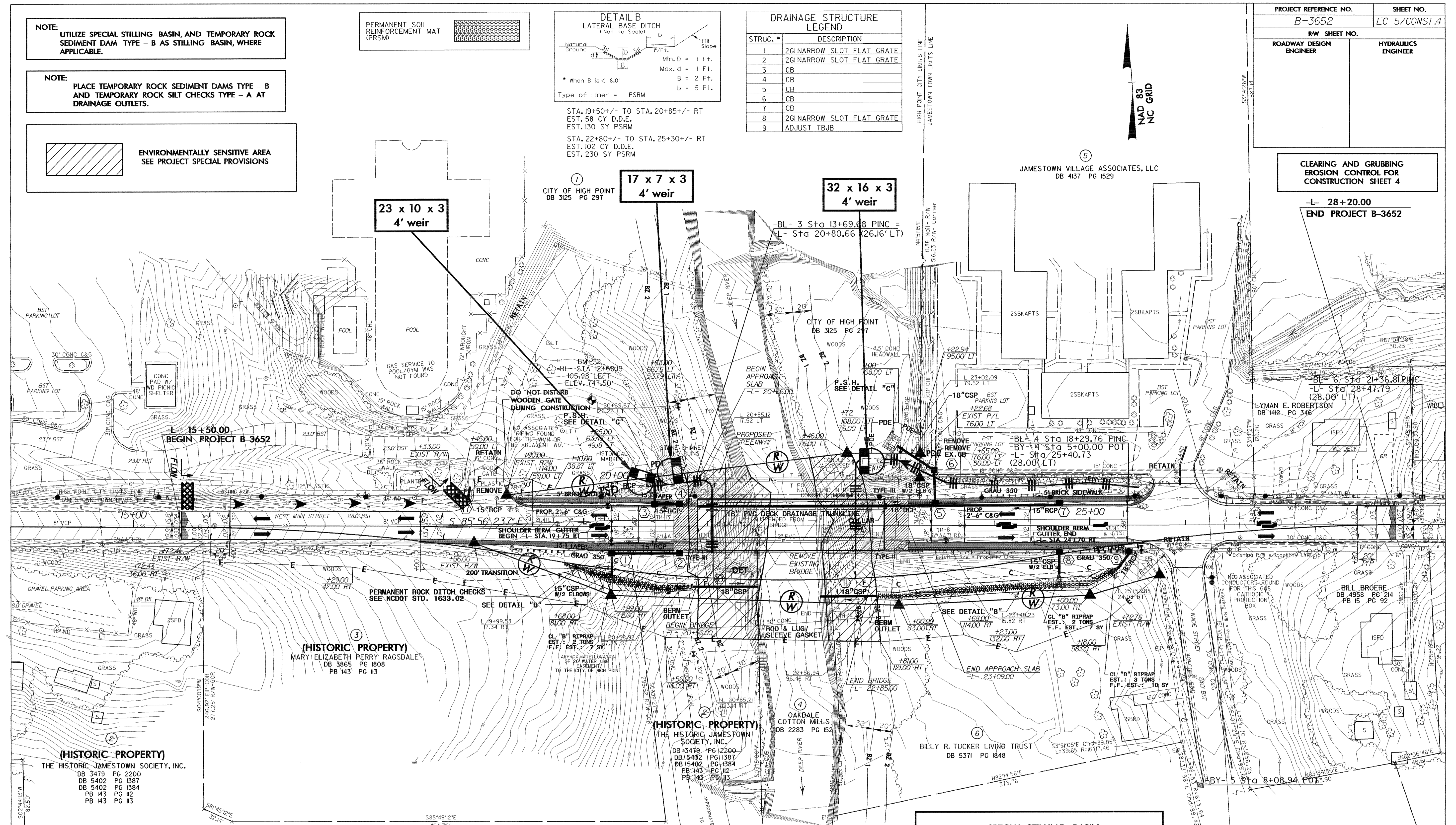
DRAINAGE STRUCTURE LEGEND

STRUC. #	DESCRIPTION
1	2GINNARROW SLOT FLAT GRATE
2	2GINNARROW SLOT FLAT GRATE
3	CB
4	CB
5	CB
6	CB
7	CB
8	2GINNARROW SLOT FLAT GRATE
9	ADJUST TBJB

PROJECT REFERENCE NO. B-3652	SHEET NO. EC-5/CONST.4
R/W SHEET NO.	HYDRAULICS ENGINEER
ROADWAY DESIGN ENGINEER	

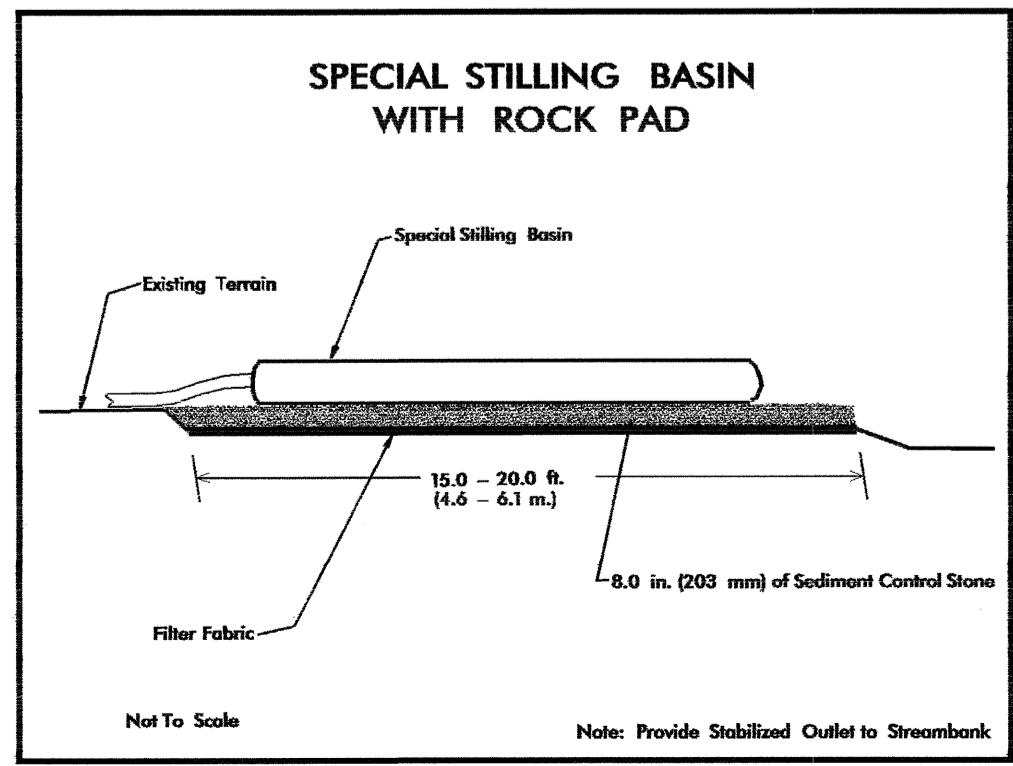
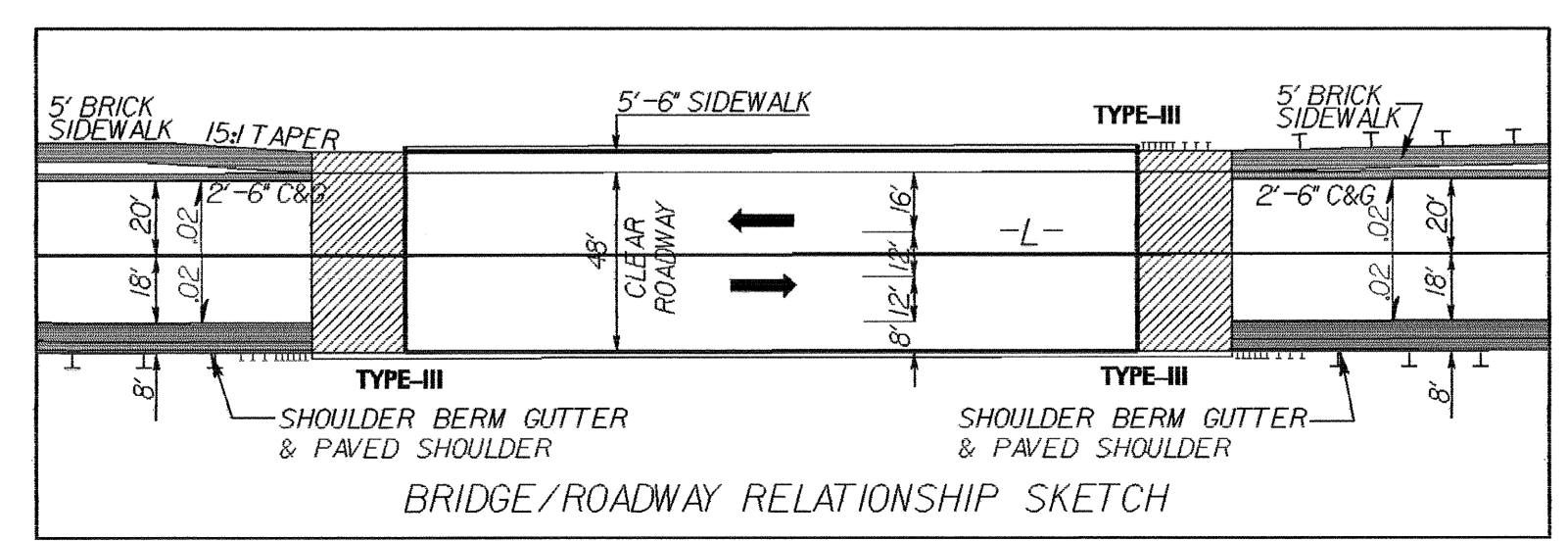
CLEARING AND GRUBBING EROSION CONTROL FOR CONSTRUCTION SHEET 4

-L- 28+20.00
END PROJECT B-3652

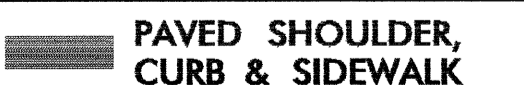


DATUM DESCRIPTION

THE LOCALIZED COORDINATE SYSTEM DEVELOPED FOR THIS PROJECT IS BASED ON THE STATE PLANE COORDINATES ESTABLISHED BY NCDOT FOR MONUMENT "B3652-2" WITH NAD 83 STATE PLANE GRID COORDINATES OF NORTHING: 8176875428(11) EASTING: 17193176118(11) THE AVERAGE COMBINED GRID FACTOR USED ON THIS PROJECT (GROUND TO GRID) IS: 0.99992353 THE N.C. LAMBERT GRID BEARING AND LOCALIZED HORIZONTAL GROUND DISTANCE FROM "B3652-2" TO -L- STATION 15+50.00 IS S 81° 25' 44.474" E 340.076' ALL LINEAR DIMENSIONS ARE LOCALIZED HORIZONTAL DISTANCES VERTICAL DATUM USED IS NGVD 29



LEGEND

 PAVED SHOULDER, CURB & SIDEWALK

SEE SHEET 2-A FOR DETOUR

SEE SHEET 5 FOR -L- PROFILE

SEE SHEETS S-1 THRU S- FOR STRUCTURE PLANS