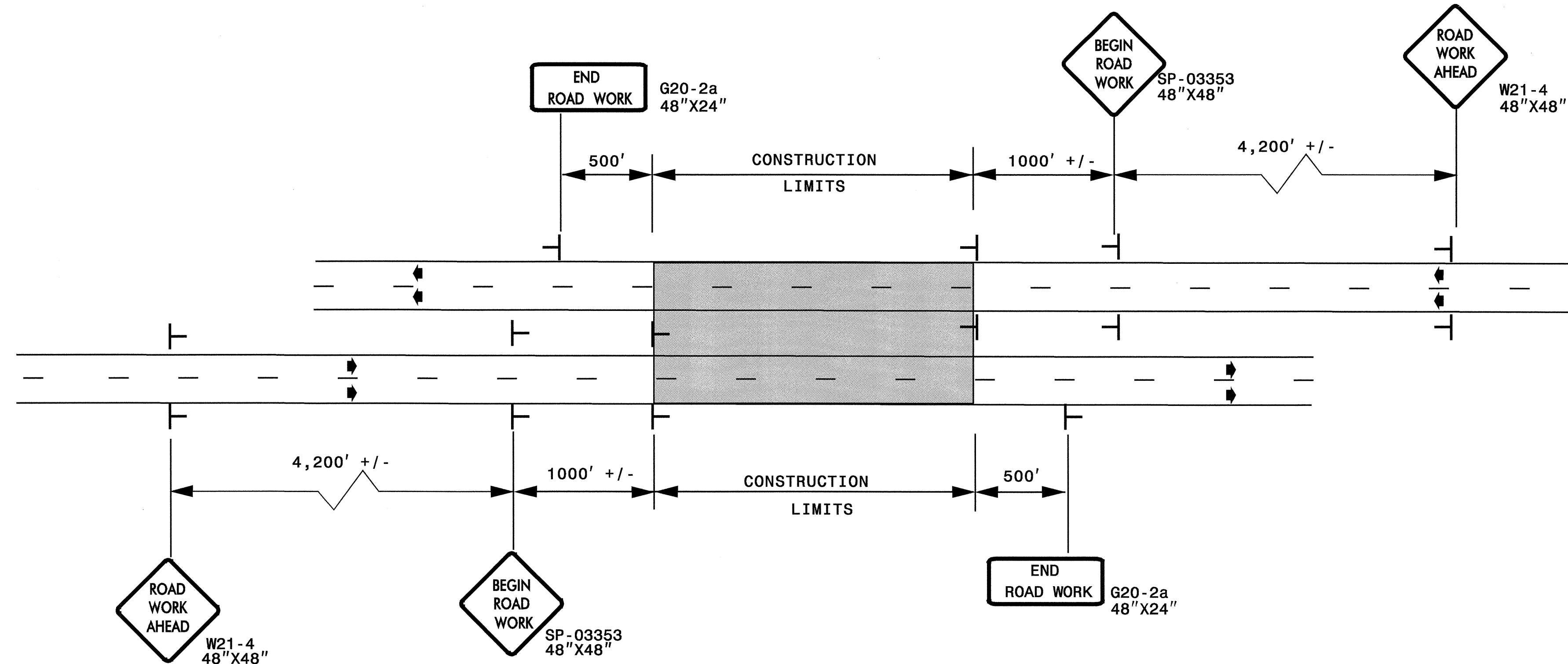


ADVANCED WORK ZONE WARNING SIGNING FOR FREEWAYS (4 LANES OR GREATER)

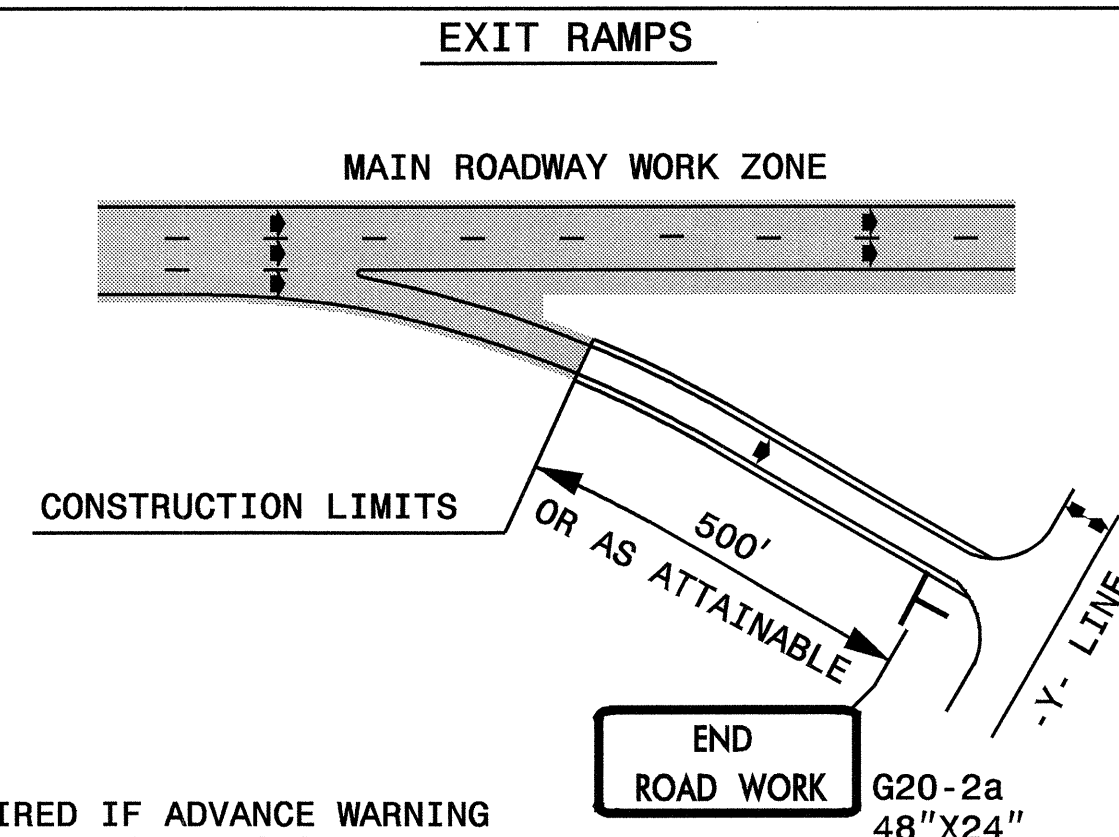
PROJ. REFERENCE NO.	SHEET NO.
B-4009	TCP-13

DETAIL A



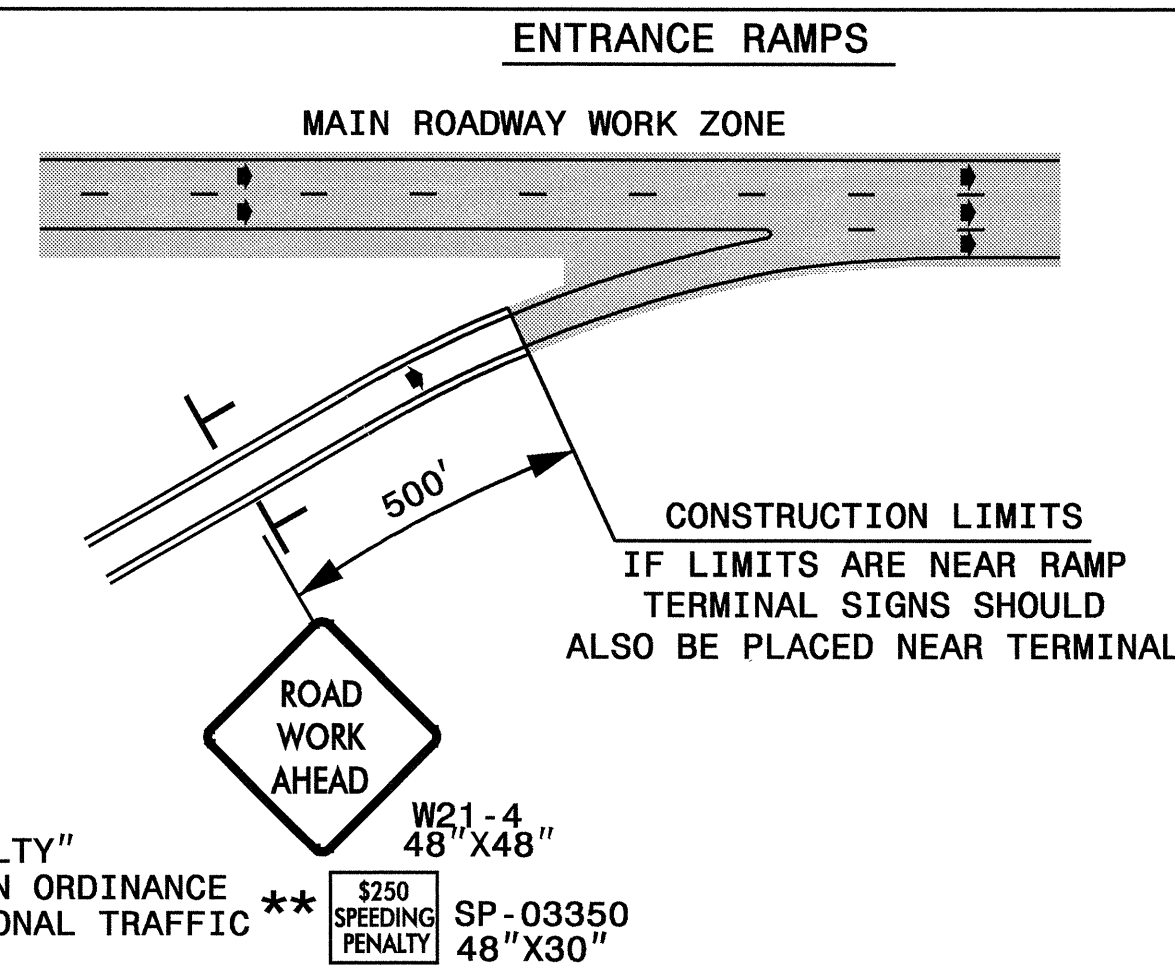
LEGEND	
	STATIONARY SIGN
◆	DIRECTION OF TRAFFIC FLOW

DETAIL B



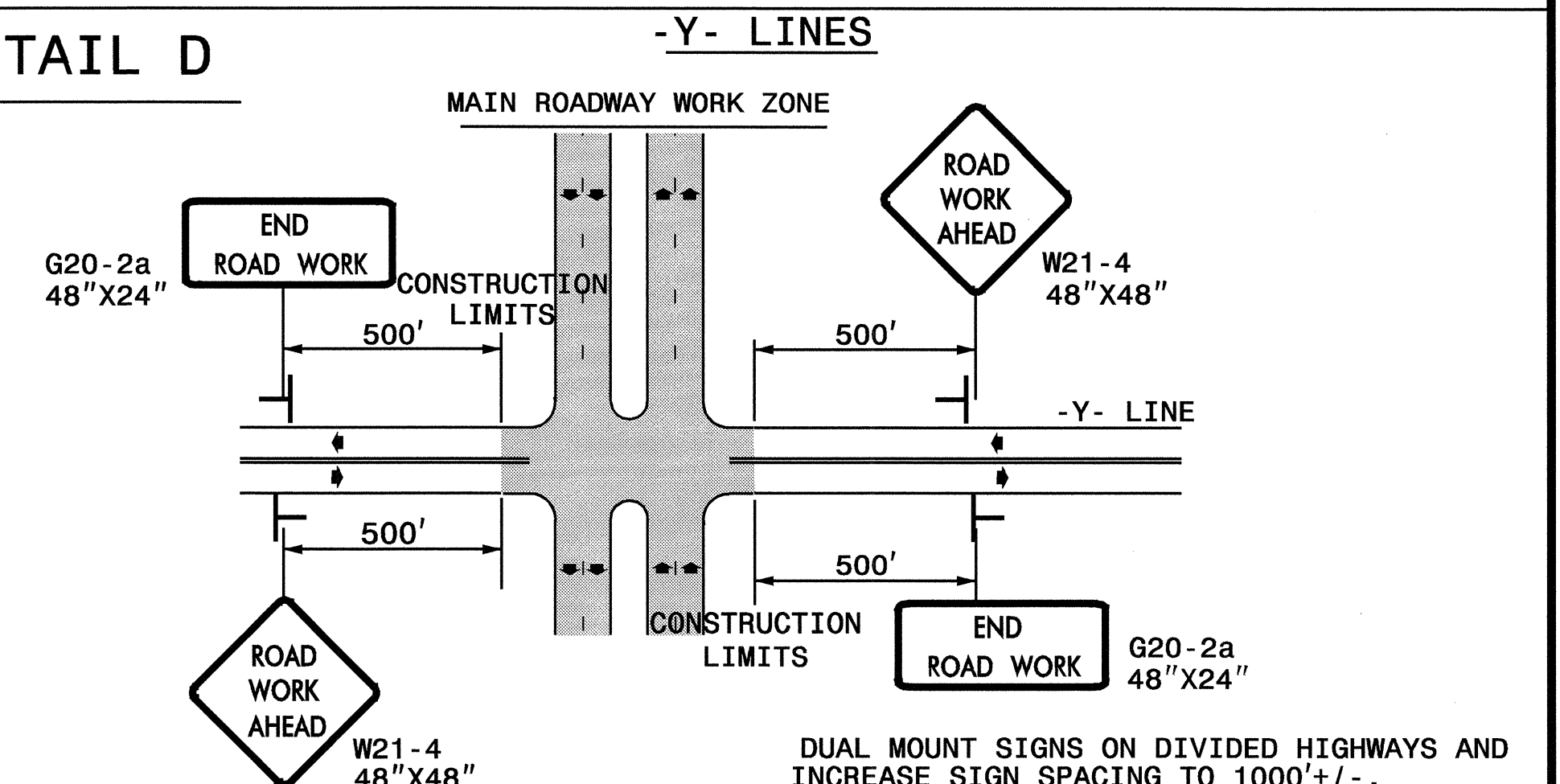
NOTE: SIGN NOT REQUIRED IF ADVANCE WARNING SIGNS HAVE BEEN PLACED ALONG -Y- LINE THAT RAMP INTERSECTS. IF CONSTRUCTION LIMITS ARE AT END OF RAMP, PLACE SIGN AT END OF RAMP.

DETAIL C



** USE THE "\$250 SPEEDING PENALTY" SUPPLEMENTAL SIGN ONLY IF AN ORDINANCE HAS BEEN ISSUED BY THE REGIONAL TRAFFIC ENGINEER.

DETAIL D



GENERAL NOTES

- USE FLUORESCENT ORANGE SHEETING (TYPE VII OR HIGHER) ON ALL ADVANCED WORK ZONE SIGNS.
- DO NOT INSTALL ADVANCE WARNING SIGNS MORE THAN 3 DAYS PRIOR TO BEGINNING OF WORK.
- SIGNS SHOWN ARE REQUIRED FOR WORK ZONES THAT WILL REMAIN IN EFFECT OVERNIGHT. FOR SHORT-TERM DAILY MAINTENANCE TYPE OPERATIONS, THIS SIGNING APPLICATION IS OPTIONAL; MAY USE ONLY APPLICABLE ROADWAY STANDARD DRAWINGS INSTEAD. HOWEVER, IF THIS SIGNING APPLICATION IS USED, SIGNS MAY BE PORTABLE MOUNTED.
- ALL SIGN SPACING DIMENSIONS ARE APPROXIMATE, FIELD ADJUST AS NECESSARY OR AS DIRECTED.
- USE 3LB STEEL U-CHANNEL POST OR 4" X 4" WOOD POST FOR ALL WORK ZONE SIGNS. 3LB STEEL U-CHANNEL POSTS MUST MEET THE REQUIREMENTS OF STANDARD SPECIFICATION SECTION 1094-1(B), MAY BE GALVANIZED STEEL, OR MAY BE PAINTED GREEN BY THE POST MANUFACTURER. SQUARE STEEL TUBING POSTS HAVING EQUIVALENT STRENGTH OF THE 3 LB STEEL U-CHANNEL POST ARE ALSO ACCEPTABLE FOR USE. ERECT SIGNS PER ROADWAY STANDARD DRAWING 1110.01. PAYMENT FOR WOOD POSTS, 3LB STEEL U-CHANNEL AND SQUARE STEEL TUBING POSTS WITH SIGNS WILL BE MADE ACCORDING TO STANDARD SPECIFICATION "WORK ZONE SIGNS" SECTION 1110.
- WHEN NECESSARY, USE SPLICING IN ACCORDANCE WITH ROADWAY STANDARD DRAWING NO. 1110.01. REMOVE ENTIRE POST WHEN REMOVING SIGNS WITH SPLICED POSTS.
- DO NOT BACK BRACE SIGN SUPPORTS.

APPROVED: DATE: 2/16/03 SEAL 	ADVANCED WORK ZONE WARNING SIGNS FOR FREEWAYS (4 LANES OR GREATER)	<table border="1" style="width: 100%; border-collapse: collapse; font-size: 8px;"> <tr> <td>SCALE:</td> <td>NONE</td> </tr> <tr> <td>DATE:</td> <td>8/03</td> </tr> <tr> <td>DWG. BY:</td> <td>JJ</td> </tr> <tr> <td>DESIGN BY:</td> <td>JJ</td> </tr> <tr> <td>REVIEWED BY:</td> <td></td> </tr> </table>	SCALE:	NONE	DATE:	8/03	DWG. BY:	JJ	DESIGN BY:	JJ	REVIEWED BY:	
SCALE:	NONE											
DATE:	8/03											
DWG. BY:	JJ											
DESIGN BY:	JJ											
REVIEWED BY:												
		<table border="1" style="width: 100%; border-collapse: collapse; font-size: 8px;"> <tr> <th colspan="2" style="text-align: center;">REVISIONS</th> </tr> <tr> <td style="width: 10px;">NO.</td> <td style="width: 100px;">DESCRIPTION</td> </tr> <tr> <td style="text-align: center;">03/04</td> <td></td> </tr> </table>	REVISIONS		NO.	DESCRIPTION	03/04					
REVISIONS												
NO.	DESCRIPTION											
03/04												

09-AUG-2005 08:31 \\nets-cs03\3\B4009\Traffic\TrafficControl\top\4009_top_top3_freeways_4lanes_or_greater.dgn WZTC2468 mwashaya AT