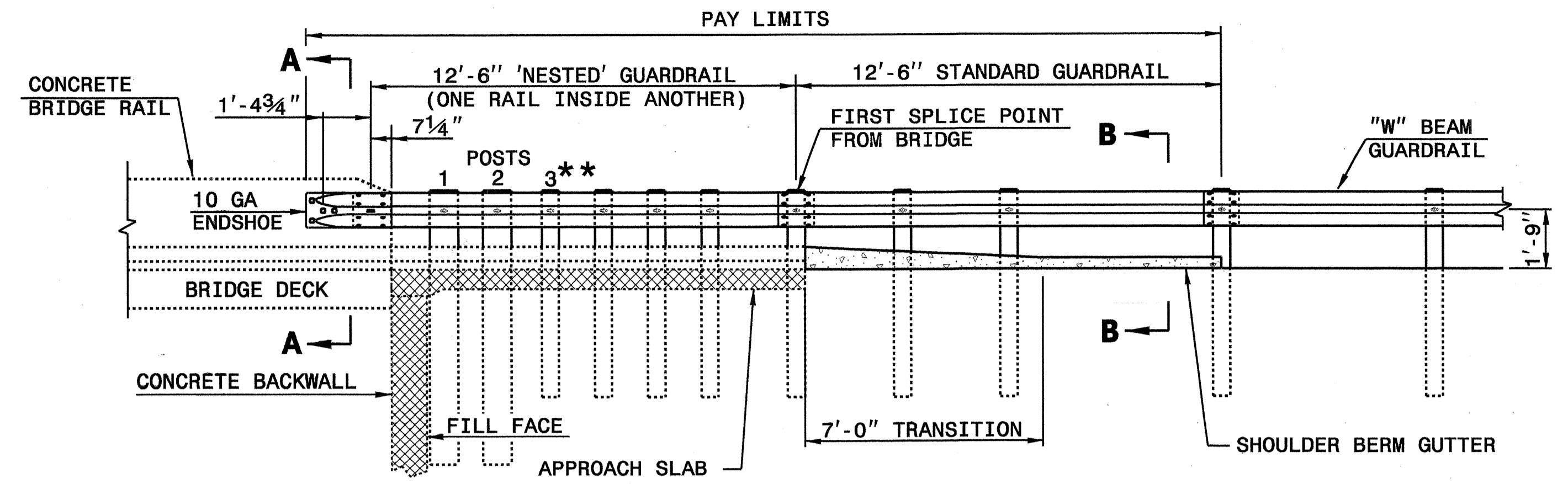
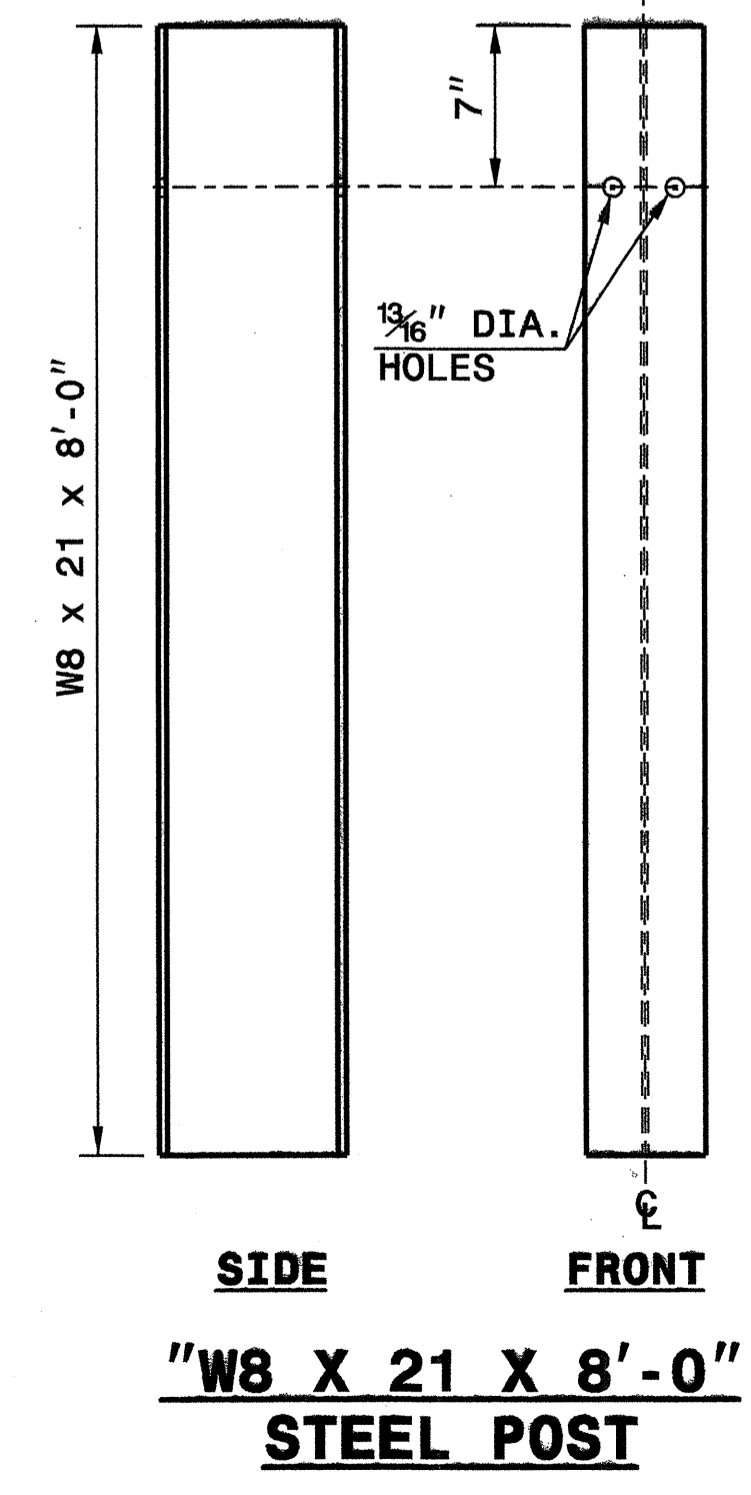
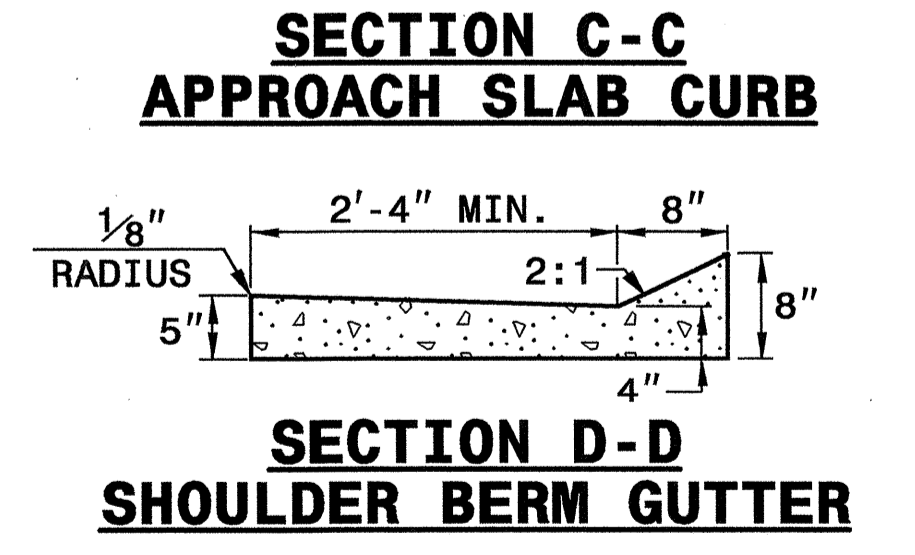
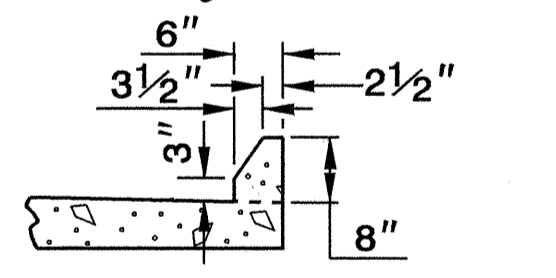
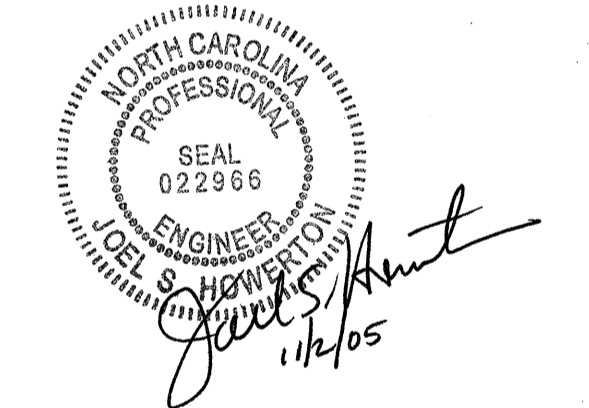
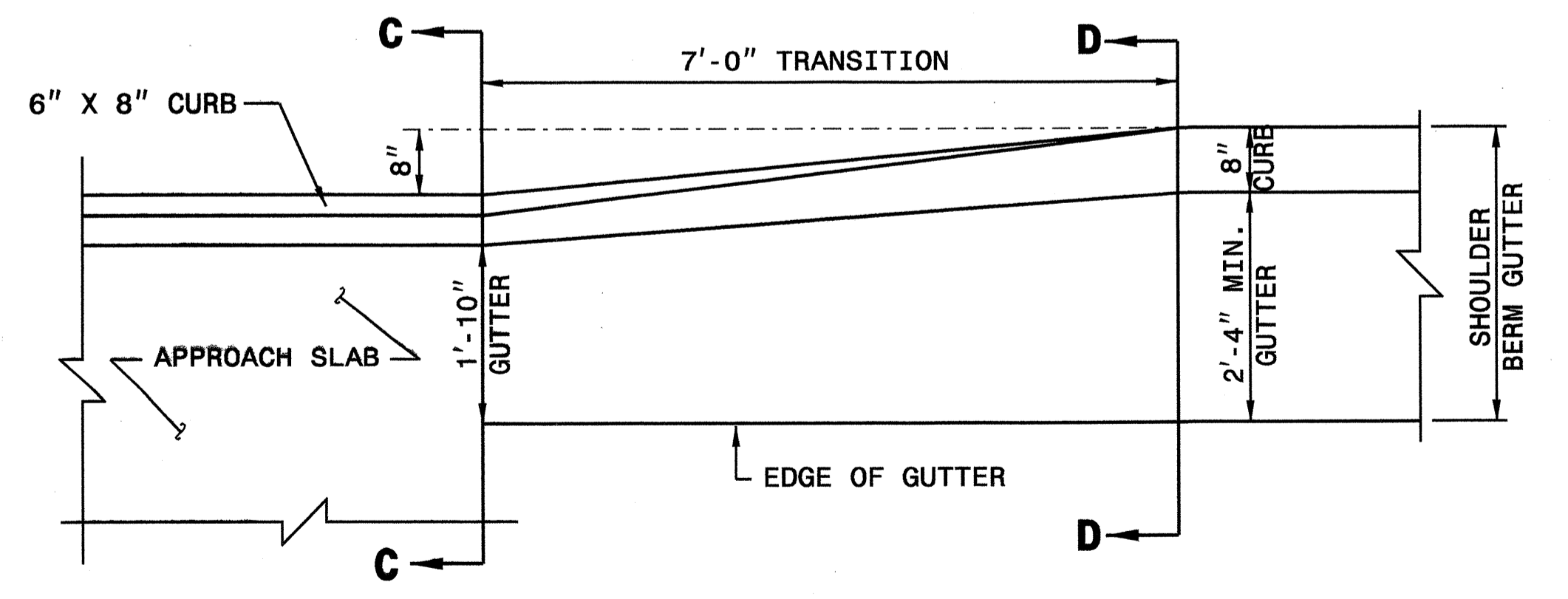
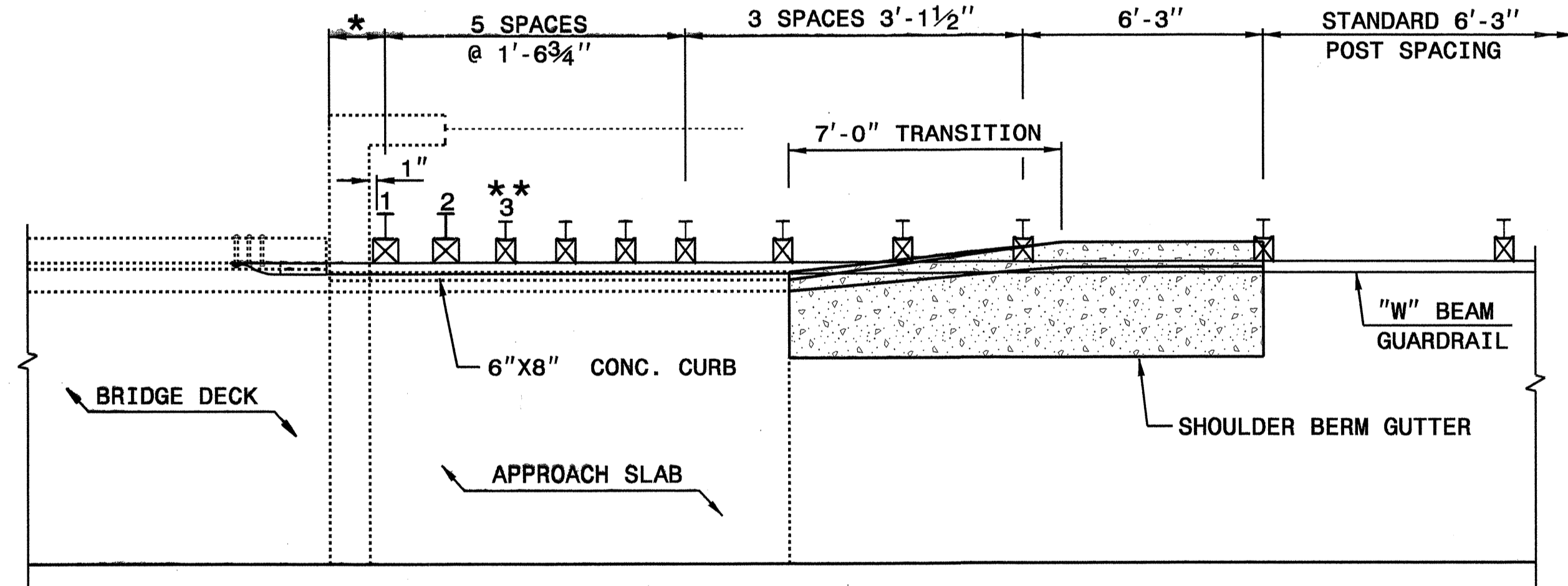


8" X 8" X 14" ROUTED WOOD OFFSET BLOCK



NOTE:

- **ELIMINATE POST 3 AND SHIFT POSTS 1 & 2 ON SKEW ANGLES GREATER THAN 150° OR LESS THAN 30° UNLESS OTHERWISE DIRECTED BY THE ENGINEER.
- *THE DISTANCE FROM END OF BRIDGE RAIL TO CENTER LINE OF THE FIRST POST SHOULD BE 11 1/2" IF CONCRETE BACKWALL IS NOT PRESENT.
- MEASURE GUARDRAIL HEIGHT FROM THE TOP OF ADJACENT SURFACE (SHOULDER, BERM, OR GUTTER).
- USE NO WOOD POSTS WITHIN THE GUARDRAIL ANCHOR UNIT LIMITS.
- LAP JOINTS IN THE DIRECTION OF TRAFFIC FLOW.
- POSTS 1 AND 2 TO BE W8 X 21 X 8'-0" LONG STEEL POST AND 8" X 8" X 14" WOOD ROUTED OFFSET BLOCK.
- SHOULDER BERM GUTTER IS REQUIRED IF NO CURBING EXISTS THROUGH ANCHOR UNIT PAY LIMITS.



**DESIGN SERVICES UNIT
STANDARDS AND SPECIAL DESIGN**
Office 919-250-4128 FAX 919-250-4119

**GUARDRAIL ANCHOR UNIT
TYPE B-83**

ORIGINAL BY: MINDOT 5-297.605 DATE: 10-05-01
 MODIFIED BY: F. E. WARD DATE: 6-10-02
 CHECKED BY: [Signature] DATE: 8-02
 FILE SPEC: .

22-AUG-2002 09:47 W:\Special_Details\ward\ward\Misc_guardrail\NCHRP350_Approved\B-83_MinnDot.dgn