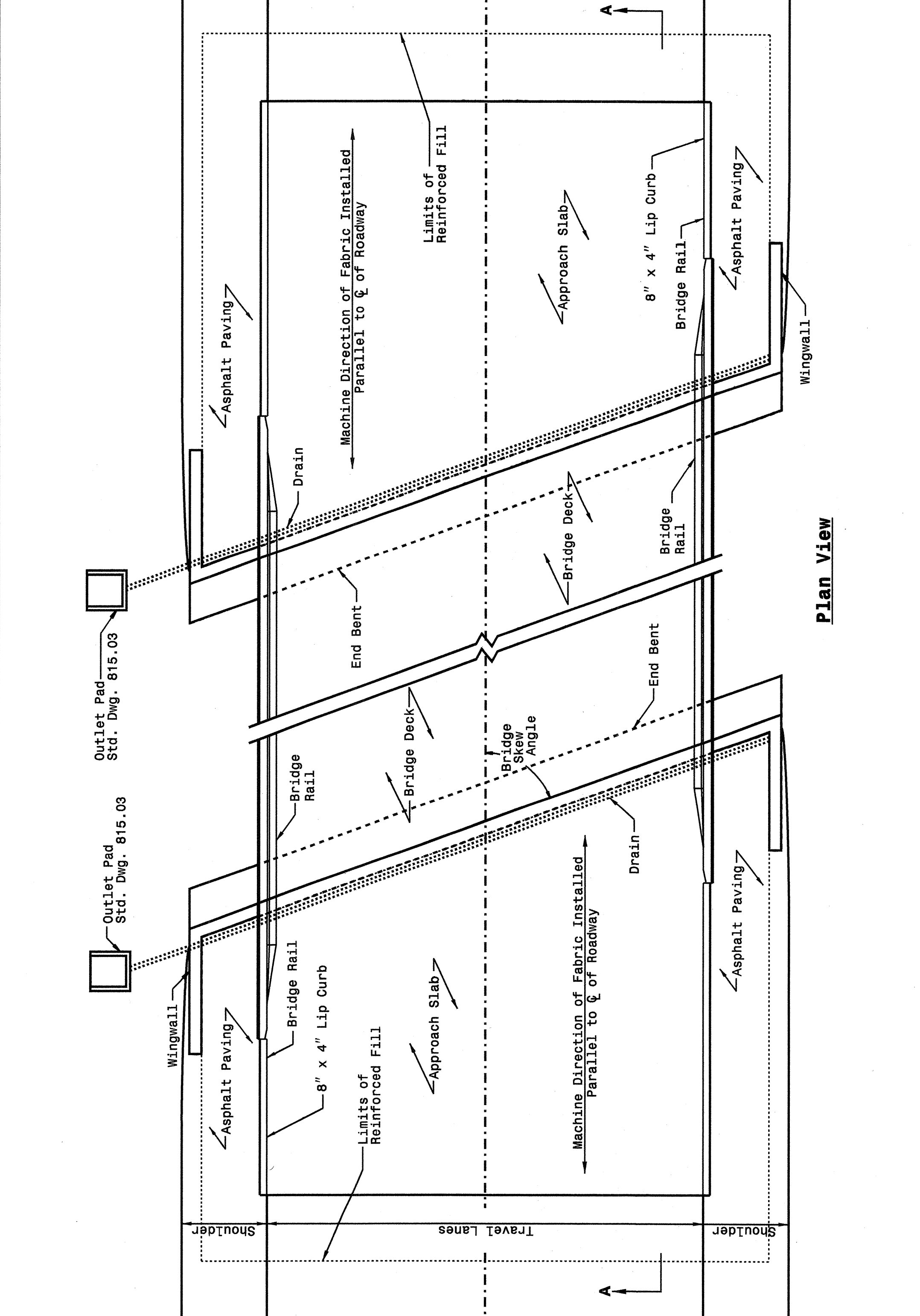


STATE OF NORTH CAROLINA DEPT. OF TRANSPORTATION DIVISION OF HIGHWAYS RALEIGH, N.C.

ENGLISH DETAIL DRAWING FOR  
**REINFORCED BRIDGE APPROACH FILLS**

SHEET 1 OF 4  
**422D10**



STATE OF NORTH CAROLINA DEPT. OF TRANSPORTATION DIVISION OF HIGHWAYS RALEIGH, N.C.

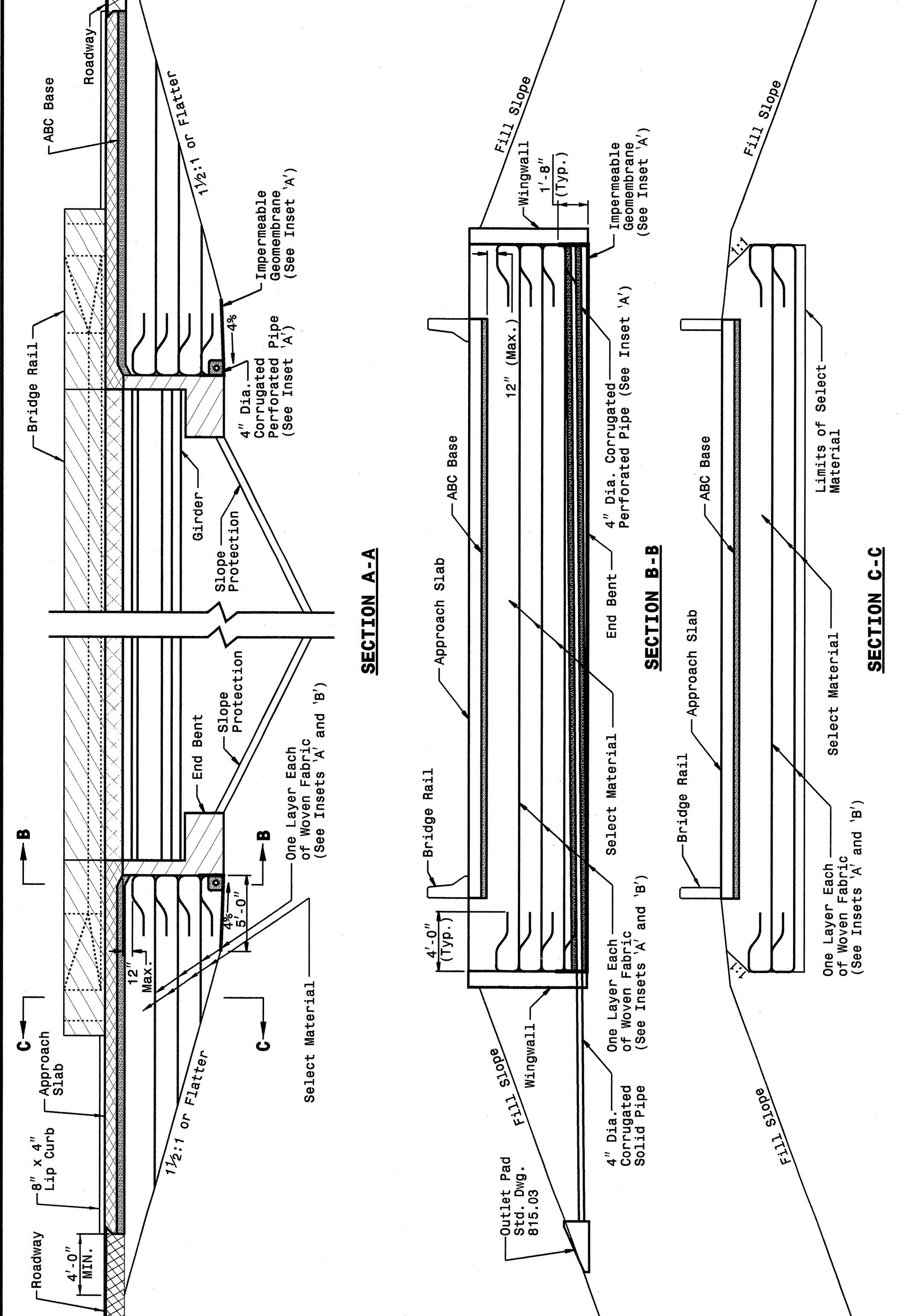
ENGLISH DETAIL DRAWING FOR  
**REINFORCED BRIDGE APPROACH FILLS**

SHEET 1 OF 4  
**422D10**

STATE OF NORTH CAROLINA DEPT. OF TRANSPORTATION DIVISION OF HIGHWAYS RALEIGH, N.C.

ENGLISH DETAIL DRAWING FOR  
**REINFORCED BRIDGE APPROACH FILLS**

SHEET 2 OF 4  
**422D10**

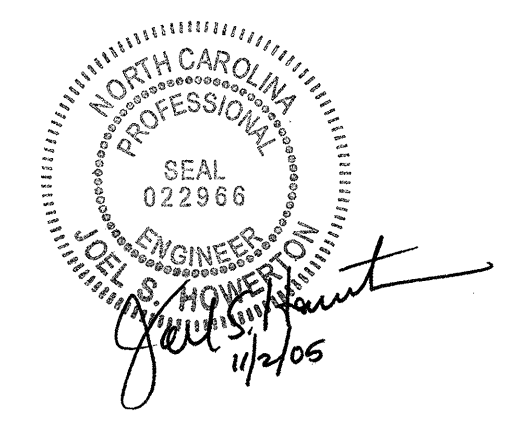


STATE OF NORTH CAROLINA DEPT. OF TRANSPORTATION DIVISION OF HIGHWAYS RALEIGH, N.C.

ENGLISH DETAIL DRAWING FOR  
**REINFORCED BRIDGE APPROACH FILLS**

PRESTRESSED AND PLATE GIRDER BRIDGES

SHEET 2 OF 4  
**422D10**



**PROJECT SERVICES UNIT  
STANDARDS AND SPECIAL DESIGN**  
Office 919-250-4128 FAX 919-250-4119

**SEE PLATE FOR TITLE**

ORIGINAL BY: 2002 STANDARDS DATE: 01-15-02  
 MODIFIED BY: E.E. WARD DATE: 11-04-04  
 CHECKED BY: *[Signature]* DATE: 11/2/04  
 FILE SPEC.: stds/02stdstodetails/english/422d10.dgn

05 NOV-2004 14:46 C:\projects\stds\02\stds to Special Details\english\422d10\0422d10.dgn  
 erickard At 05212266