

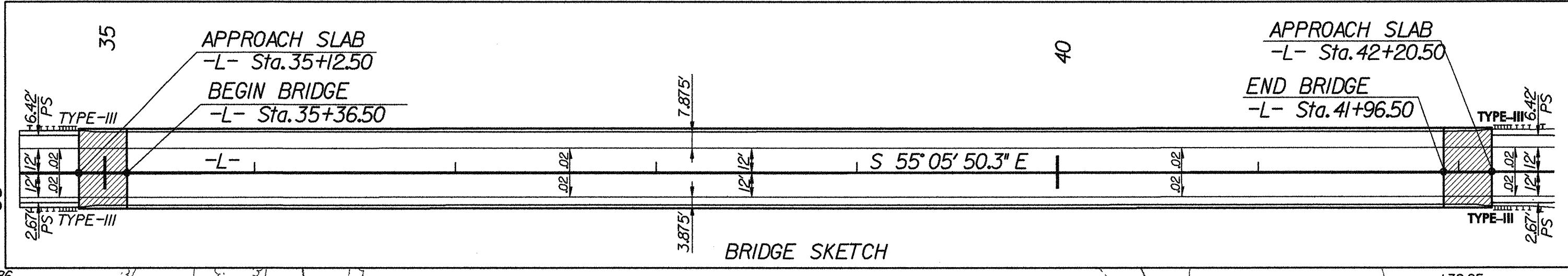
8/17/05

PI Sta. 21+93.76
 $\Delta = 29^\circ 11' 43.4''$ (RT)
 $D = 115' 00.0''$
 $L = 2,335.63'$
 $T = 1,933.76'$
 $R = 4,583.66'$
 $SE = 04$
 $DS = 60$ MPH

Pls Sta. 33+71.63
 $\Delta s = 0^\circ 40' 30.0''$
 $Ls = 108.00'$
 $LT = 72.00'$
 $ST = 36.00'$
 $SE = 04$
 $DS = 60$ MPH

ANNE T. BRICKER
 P.I.N. 6445-00-37-1108.00
 DB. 175, PG. 100

CLASS B RIPRAP
 EST. ± 1 TON
 EST. 5 SY
 FILTER FABRIC



NOTES
 FOR CROSS-SECTION OF: -L- SEE SHEET NO: X-4 - X-7
 FOR STRUCTURE PLANS SEE SHEET NO: S-1 - S-64

PROJECT REFERENCE NO. **B-4009** SHEET NO. **5**

Roadway Design Engineer: **DAVID L. WILSON**, P.E.
 Professional Seal No. 19026

Hydraulics Engineer: **W. CLIFF MARTIN**, P.E.
 Professional Seal No. 9334

Professional Engineer: **DAVID L. WILSON**, P.E.
 Seal No. 121515

Professional Engineer: **W. CLIFF MARTIN**, P.E.
 Seal No. 121515

Professional Engineer: **DAVID L. WILSON**, P.E.
 Seal No. 19026

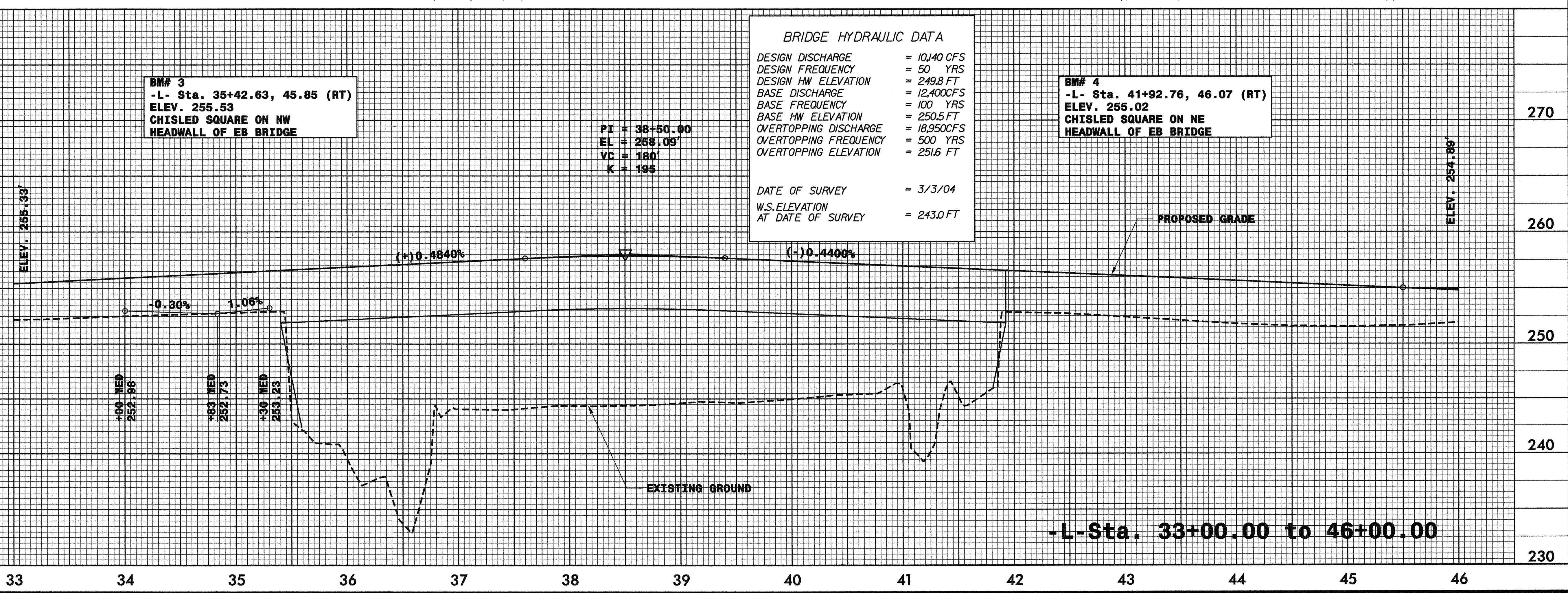
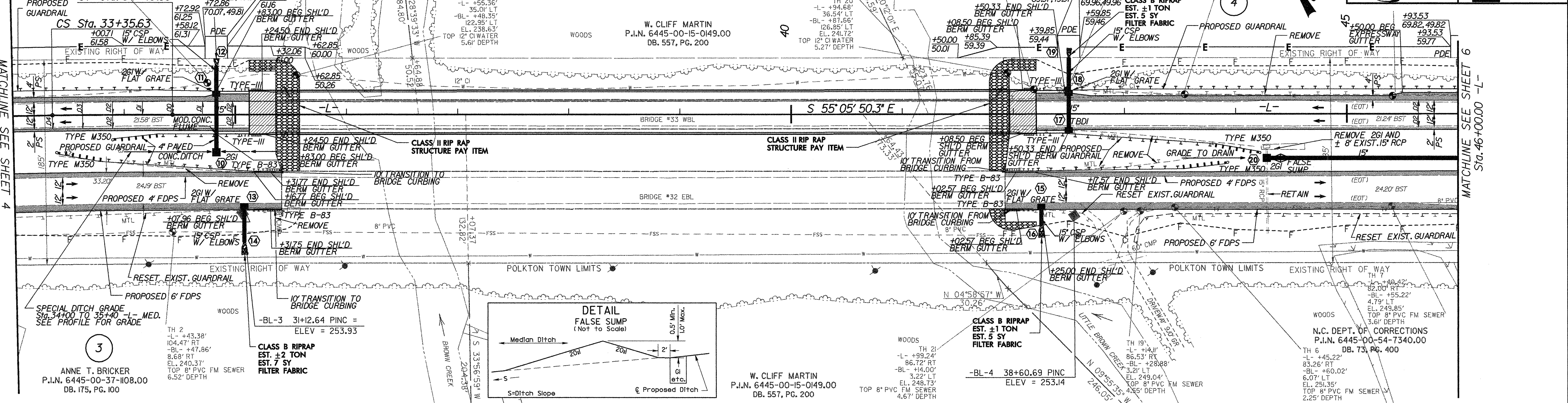
Professional Engineer: **W. CLIFF MARTIN**, P.E.
 Seal No. 9334

Professional Engineer: **DAVID L. WILSON**, P.E.
 Seal No. 19026

Professional Engineer: **W. CLIFF MARTIN**, P.E.
 Seal No. 9334

Professional Engineer: **DAVID L. WILSON**, P.E.
 Seal No. 19026

Professional Engineer: **W. CLIFF MARTIN**, P.E.
 Seal No. 9334



BRIDGE HYDRAULIC DATA

DESIGN DISCHARGE	= 10,140 CFS
DESIGN FREQUENCY	= 50 YRS
DESIGN HW ELEVATION	= 249.8 FT
BASE DISCHARGE	= 12,400 CFS
BASE FREQUENCY	= 100 YRS
BASE HW ELEVATION	= 250.5 FT
OVERTOPPING DISCHARGE	= 18,950 CFS
OVERTOPPING FREQUENCY	= 500 YRS
OVERTOPPING ELEVATION	= 251.6 FT

DATE OF SURVEY = 3/3/04
 W.S. ELEVATION AT DATE OF SURVEY = 243.0 FT

BM# 3
 -L- Sta. 35+42.63, 45.85 (RT)
 ELEV. 255.53
 CHISEL SQUARE ON NW
 HEADWALL OF EB BRIDGE

BM# 4
 -L- Sta. 41+92.76, 46.07 (RT)
 ELEV. 255.02
 CHISEL SQUARE ON NE
 HEADWALL OF EB BRIDGE

PI = 38+50.00
 EL = 258.09'
 VC = 180'
 K = 195

FILE: r:\mtd\14009\roadway\proj\14009_rdg_sht05.dgn
 DATE: 2/14/2005 12:30:57 PM