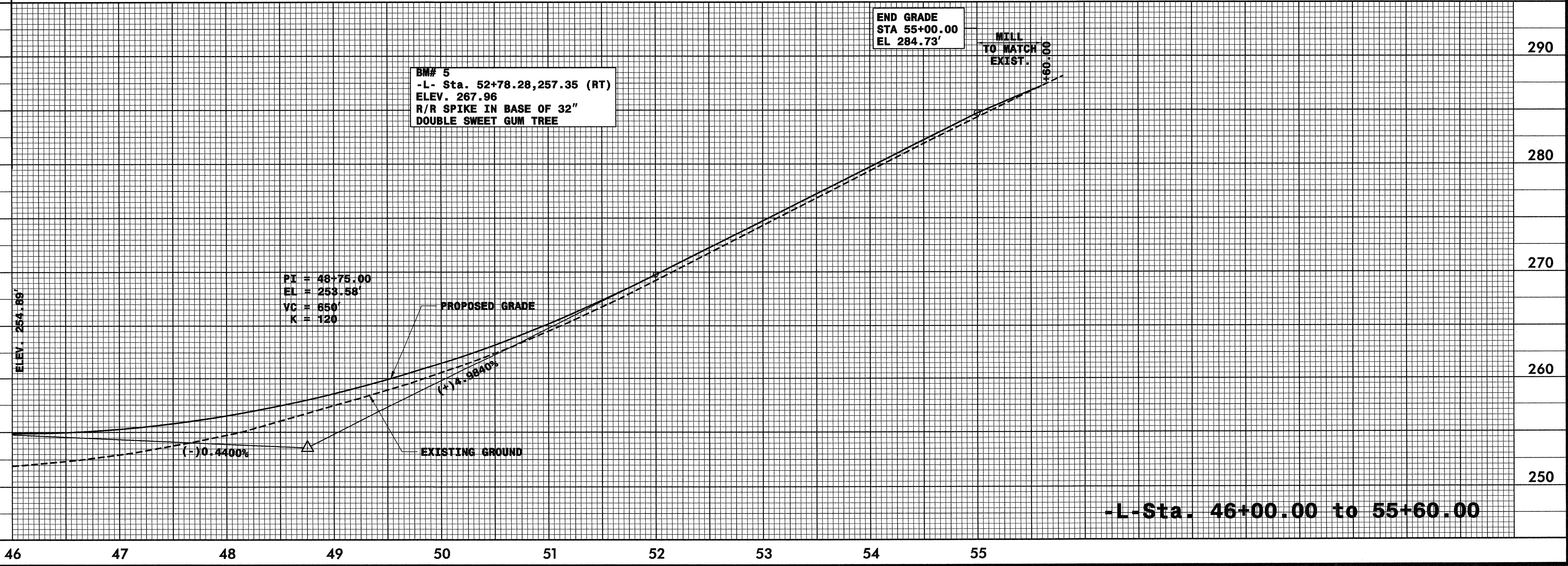
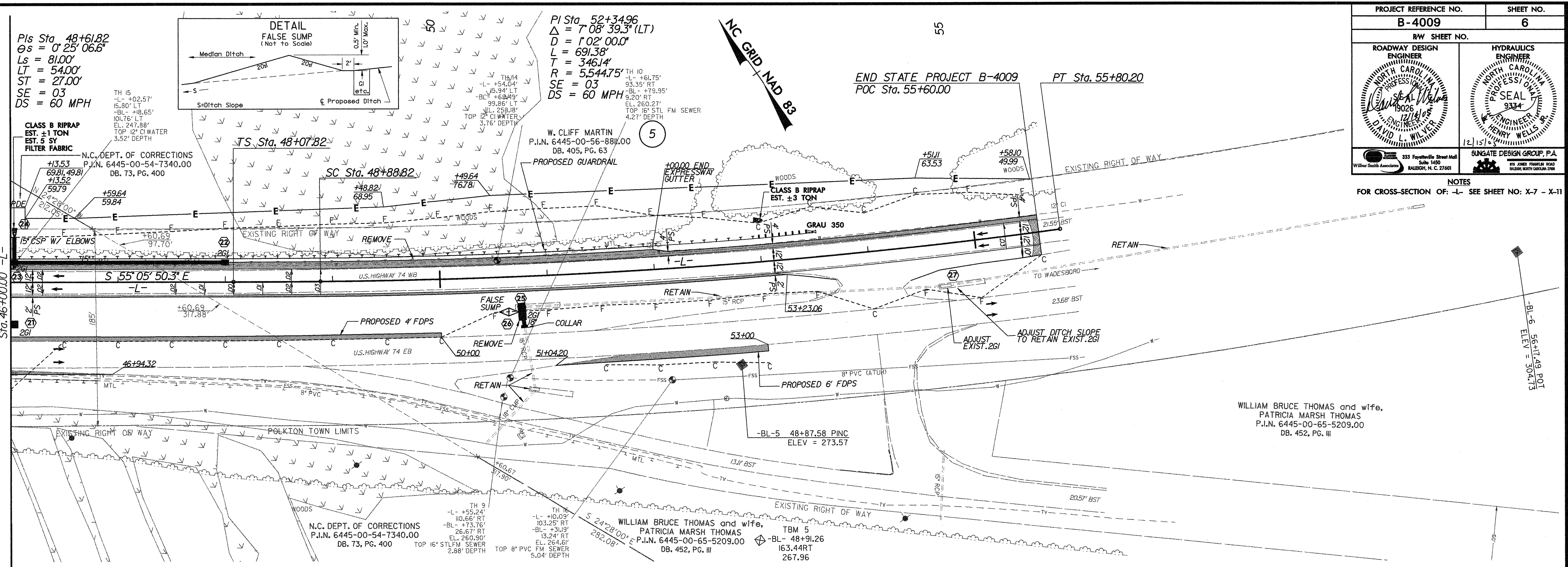


8/17/09

PROJECT REFERENCE NO. B-4009	SHEET NO. 6
RW SHEET NO.	
ROADWAY DESIGN ENGINEER NORTH CAROLINA PROFESSIONAL ENGINEERS & SURVEYORS <i>David L. Wilver</i> 12/15/08 DAVID L. WILVER	HYDRAULICS ENGINEER NORTH CAROLINA PROFESSIONAL ENGINEERS & SURVEYORS <i>Henry Wells</i> 12/15/08 HENRY WELLS
333 Fayetteville Street, Suite 1450 Raleigh, N.C. 27601	SINGATE DESIGN GROUP, P.A. 100 WEST HUNTER ROAD WALDEN, NORTH CAROLINA 28087

NOTES
FOR CROSS-SECTION OF: -L- SEE SHEET NO: X-7 - X-11



REVISIONS

FILE: n:\inroad\4009\roadway\proj\4009_rdw_msh06.dgn
DATE: 01/22/09 12:30:58 PM

46 47 48 49 50 51 52 53 54 55

-L- Sta. 46+00.00 to 55+60.00