

NOTES

LONGITUDINAL STEEL MAY BE SHIFTED SLIGHTLY, AS NECESSARY, TO AVOID INTERFERENCE WITH STIRRUPS IN PRESTRESSED CONCRETE GIRDERS.

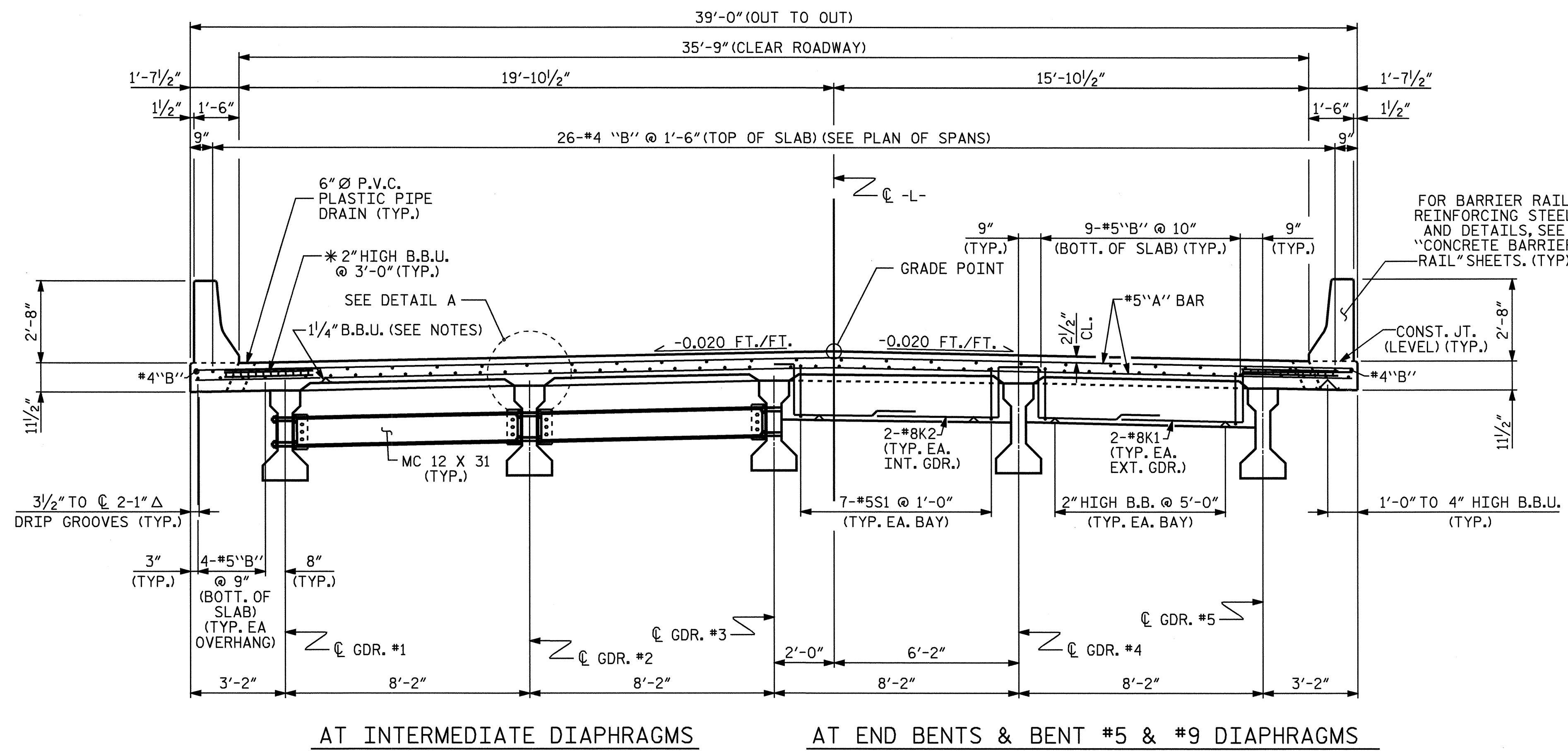
PREVIOUSLY CAST CONCRETE IN A CONTINUOUS UNIT SHALL HAVE ATTAINED A MINIMUM COMPRESSIVE STRENGTH OF 3,000 PSI BEFORE ADDITIONAL CONCRETE IS CAST IN THE UNIT.

BARRIER RAIL IN A CONTINUOUS UNIT SHALL NOT BE CAST UNTIL ALL SLAB CONCRETE IN THE UNIT HAS BEEN CAST AND HAS REACHED A MINIMUM COMPRESSIVE STRENGTH OF 3,000 PSI.

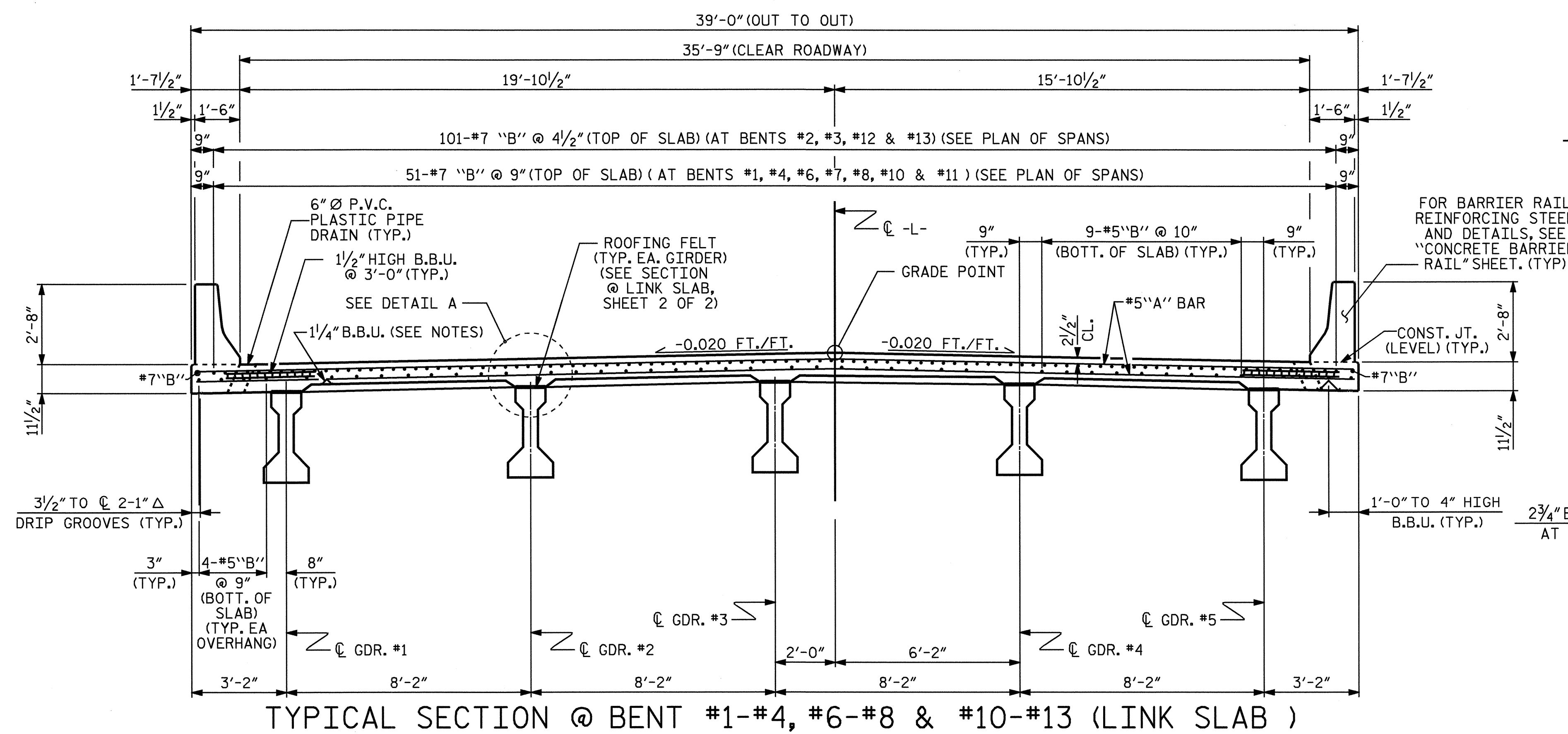
*USE THIS SIZE BAR SUPPORT IN THE AREAS WITH THE #4 "B" BARS. FOR OTHER AREAS WITH #7 "B" BARS, USE THE BAR SUPPORT AS SHOWN IN THE TYPICAL SECTION AT LINK SLAB.

PROVIDE 1/4" HIGH BEAM BOLSTERS UPPER AT 4'-0" CTS. ATOP THE METAL STAY-IN-PLACE FORMS TO SUPPORT THE BOTTOM MAT OF 'A' BARS. WHEN USING REMOVABLE FORMS, PROVIDE CONTINUOUS HIGH CHAIRS FOR METAL DECK (C.H.C.M.) @ 4'-0" CTS. WITH A HEIGHT TO SUPPORT THE BOTTOM MAT OF 'A' BARS A CLEAR DISTANCE OF 2 1/2" ABOVE THE TOP OF THE REMOVABLE FORM.

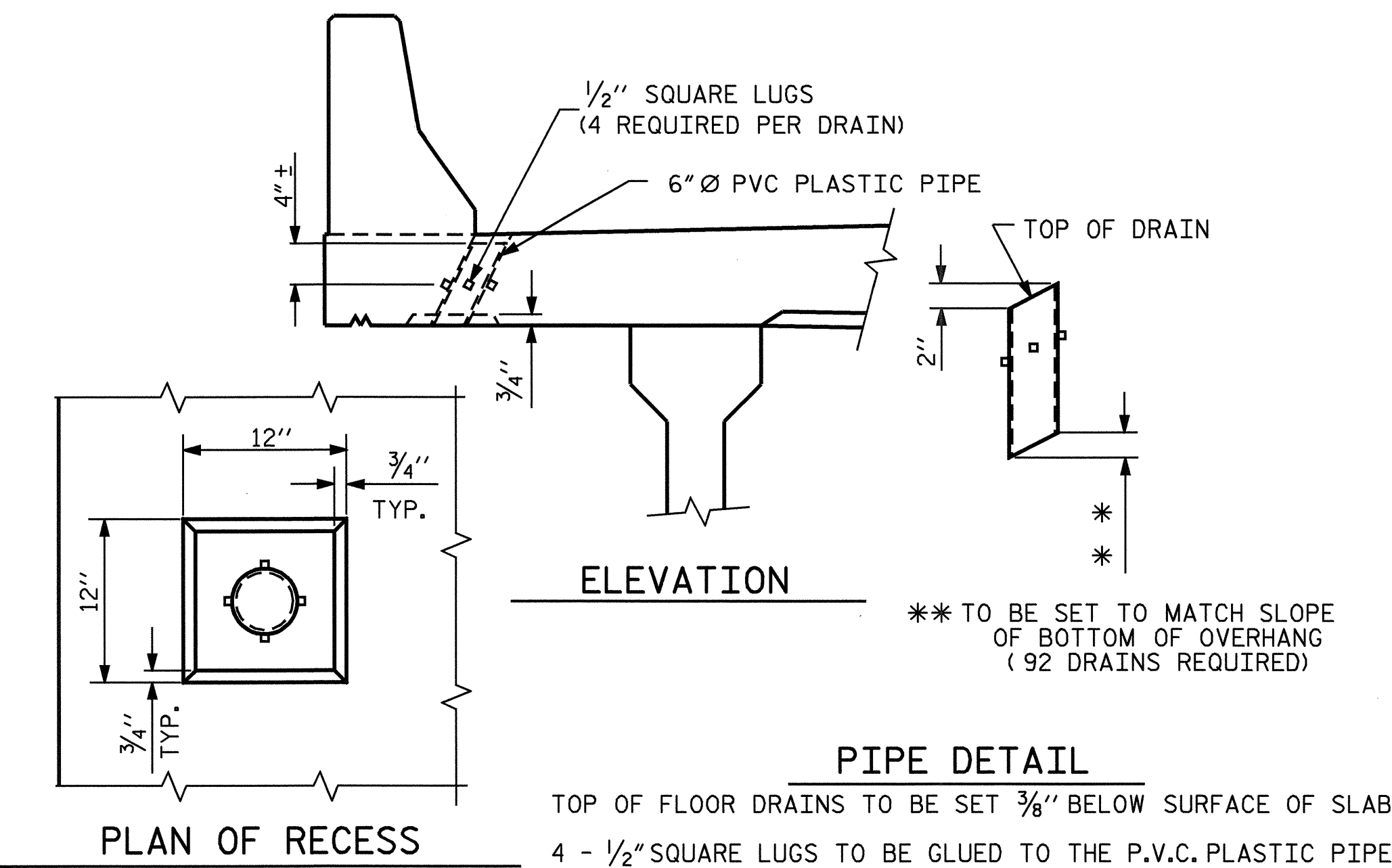
FOR FABRICATED METAL STAY-IN-PLACE FORMS, SEE SPECIAL PROVISIONS.



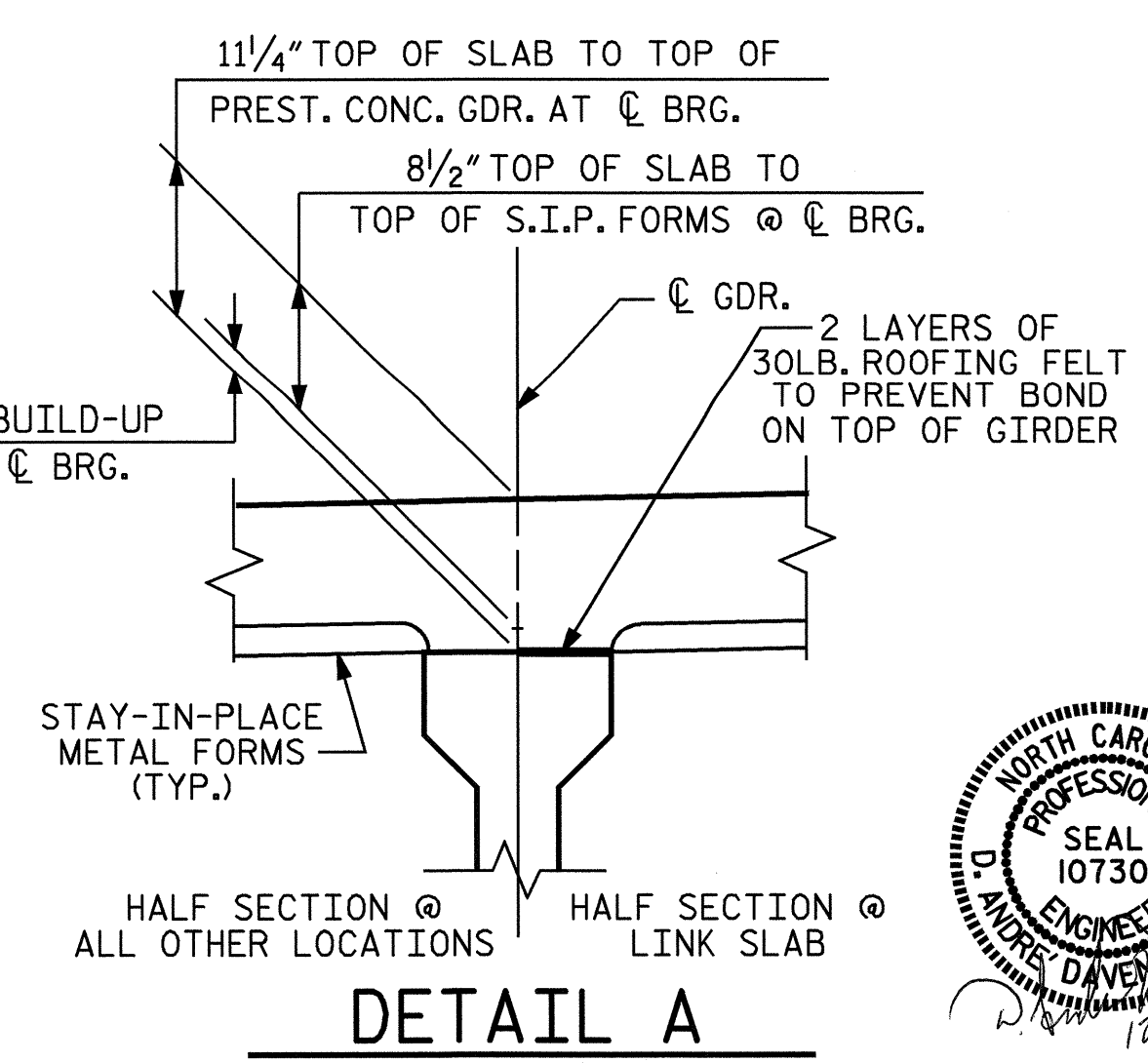
TYPICAL SECTION



TYPICAL SECTION @ BENT #1-#4, #6-#8 & #10-#13 (LINK SLAB)



DRAIN DETAILS



DETAIL A

PROJECT NO. B-4009
ANSON COUNTY
 STATION: 38+66.50-L-

SHEET 1 OF 2

STATE OF NORTH CAROLINA DEPARTMENT OF TRANSPORTATION RALEIGH		SUPERSTRUCTURE TYPICAL SECTIONS		SHEET NO. S-9	
REVISIONS					
NO.	BY:	DATE:	NO.	BY:	DATE:
1			3		
2			4		
				TOTAL SHEETS 64	

DRAWN BY: H. T. BARBOUR DATE: 11-19-04
 CHECKED BY: A. COLE DATE: 2-05