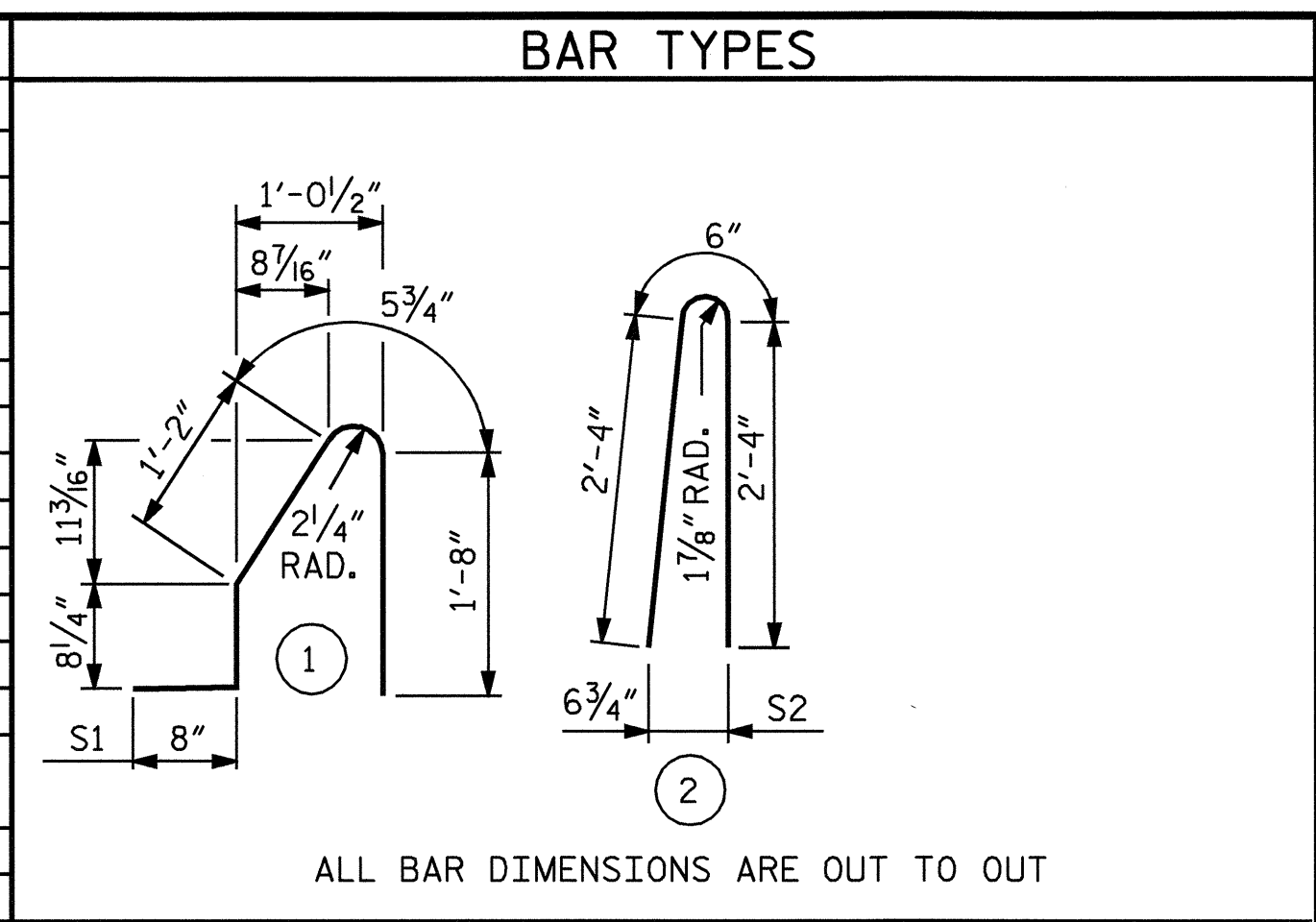


ELEVATION AT EXPANSION JOINTS  
BARRIER RAIL DETAILS

BILL OF MATERIAL					
FOR CONCRETE BARRIER RAIL ONLY					
BAR	NO.	SIZE	TYPE	LENGTH	WEIGHT
* S1	1316	#5	1	4'-8"	6405
* S2	1316	#5	2	5'-2"	7092
* B1	224	#5	STR	22'-1"	5159
* B2	56	#5	STR	29'-1"	1699
* B3	112	#5	STR	21'-11"	2560
* EPOXY COATED REINFORCING STEEL					22915 LBS.
CLASS AA CONCRETE					131.5 CU. YDS.
CONCRETE BARRIER RAIL					1313'-10" LIN. FT.

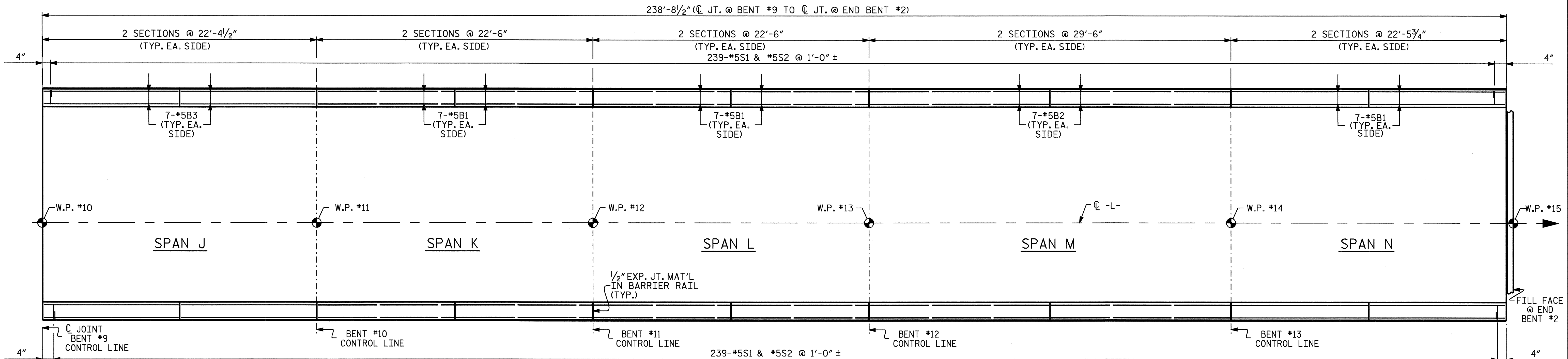


**NOTES**

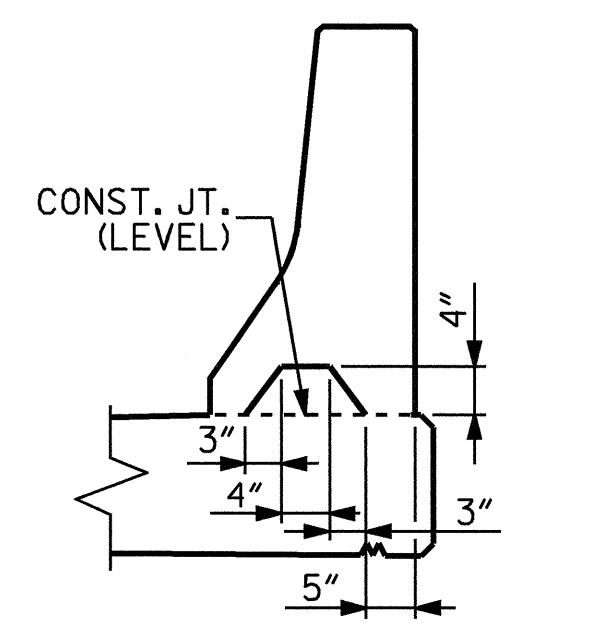
THE BARRIER RAIL IN EACH CONTINUOUS UNIT SHALL NOT BE CAST UNTIL ALL SLAB CONCRETE IN THAT UNIT HAS BEEN CAST AND HAS REACHED A MINIMUM COMPRESSIVE STRENGTH OF 3,000 PSI.

ALL REINFORCING STEEL IN BARRIER RAILS SHALL BE EPOXY COATED.

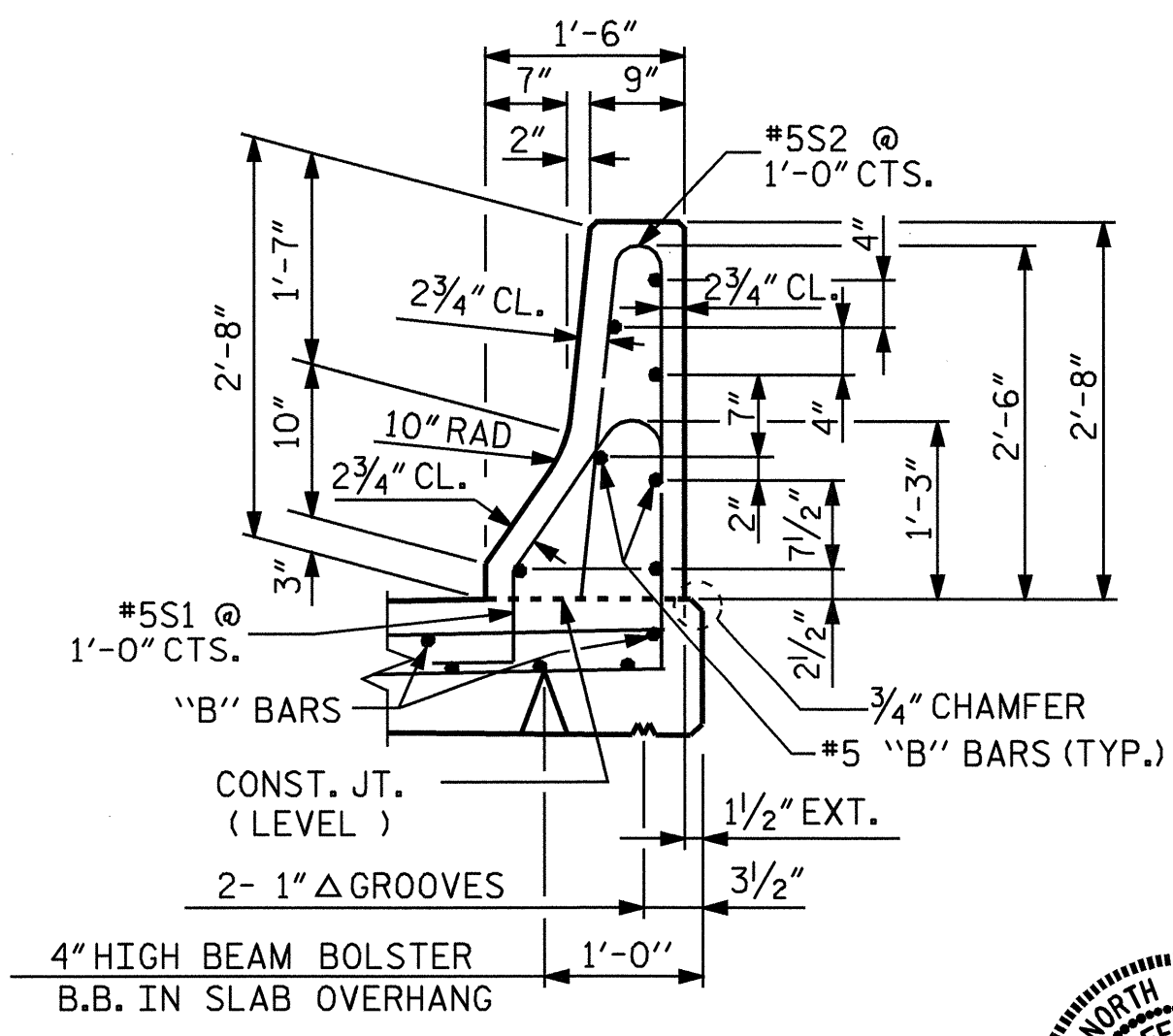
VERTICAL GROOVED CONTRACTION JOINTS, 1/2" IN DEPTH, SHALL BE TOOLED IN ALL EXPOSED FACES OF THE BARRIER RAIL AND IN ACCORDANCE WITH ARTICLE 825-10(B) OF THE STANDARD SPECIFICATIONS. THE CONTRACTION JOINT SHALL BE LOCATED AT EACH THIRD POINT BETWEEN BARRIER RAIL EXPANSION JOINTS. ONLY ONE CONTRACTION JOINT IS REQUIRED AT MIDPOINT OF BARRIER RAIL SEGMENTS LESS THAN 20 FEET IN LENGTH AND NO CONTRACTION JOINTS ARE REQUIRED FOR THOSE SEGMENTS LESS THAN 10 FEET IN LENGTH.



PLAN - SPANS J-N



SECTION S-S  
@ DAM IN OPEN JOINT  
(THIS IS TO BE USED ONLY WHEN SLIP FORM IS USED)



SECTION THRU RAIL

PROJECT NO. B-4009  
ANSON COUNTY  
 STATION: 38+66.50-L-

SHEET 2 OF 2

STATE OF NORTH CAROLINA  
 DEPARTMENT OF TRANSPORTATION  
 RALEIGH

**CONCRETE BARRIER RAIL**

DRAWN BY : H. T. BARBOUR DATE : 1-07-05  
 CHECKED BY : A. COLE DATE : 2-05

REVISIONS						SHEET NO.
NO.	BY:	DATE:	NO.	BY:	DATE:	S-26
1			3			TOTAL SHEETS
2			4			64