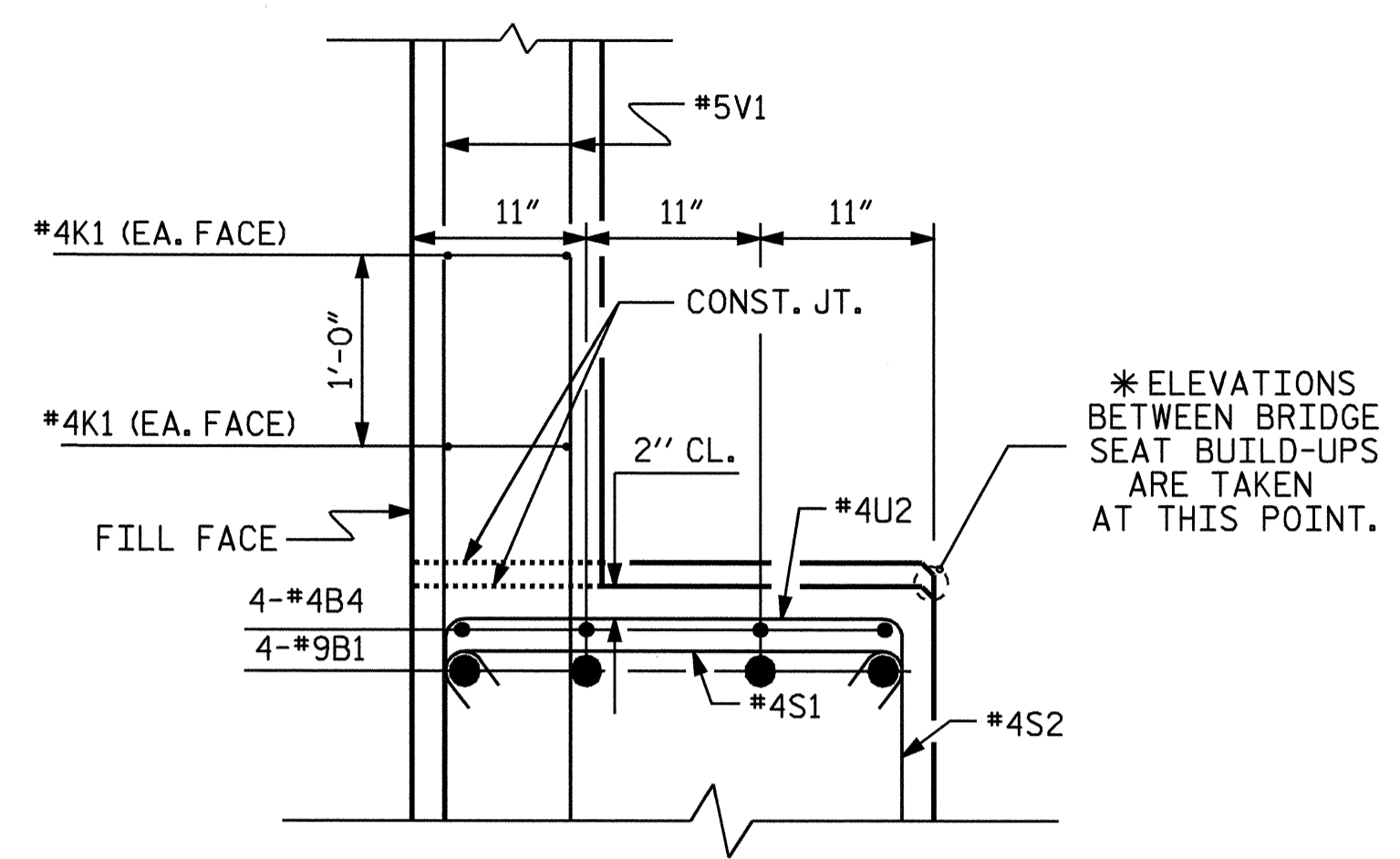
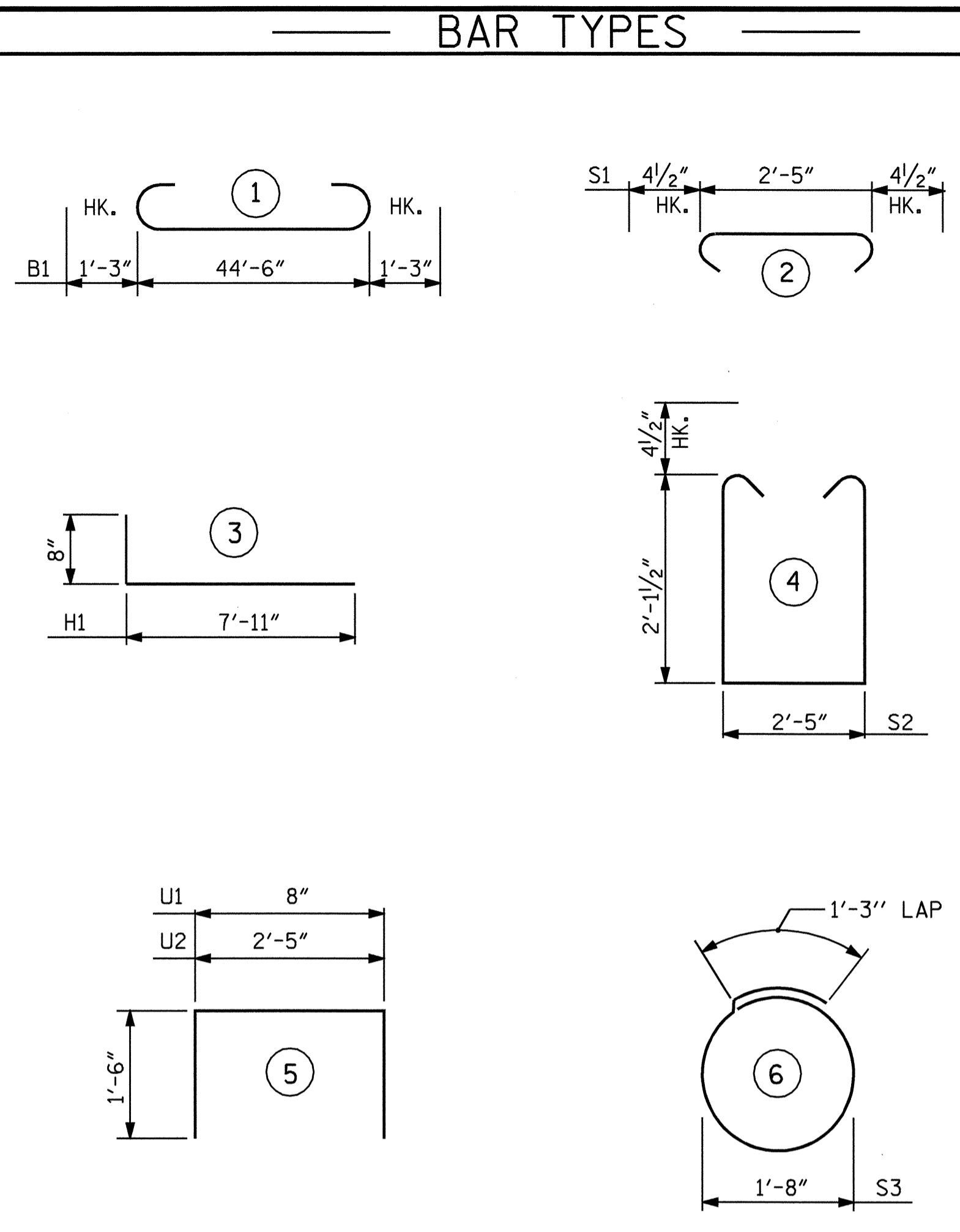


SECTION A-A

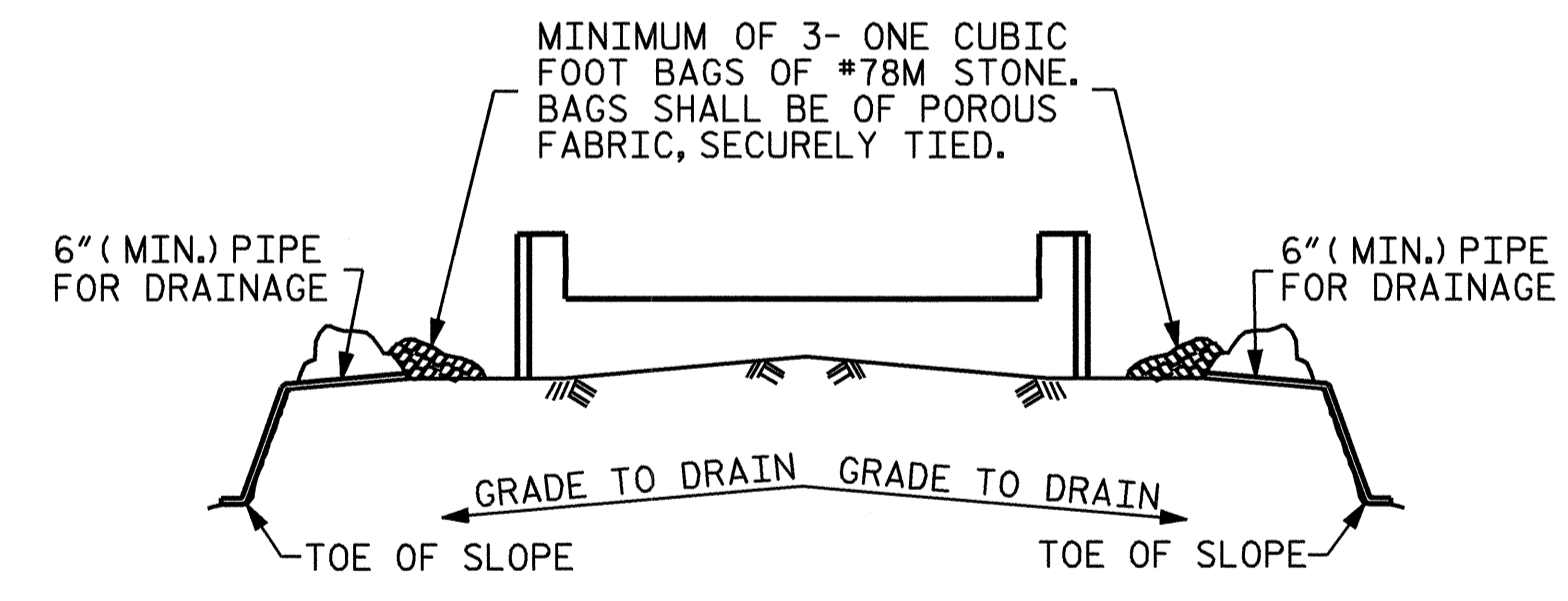


SECTION B-B



ALL BAR DIMENSIONS ARE OUT TO OUT.

BILL OF MATERIAL					
END BENT #1					
BAR	NO.	SIZE	TYPE	LENGTH	WEIGHT
B1	8	#9		47'-0"	1278
B2	2	#5	STR.	44'-8"	93
B3	8	#4	STR.	23'-7"	126
B4	12	#4	STR.	2'-7"	21
B5	12	#4	STR.	2'-5"	19
H1	32	#5		8'-7"	286
K1	12	#4	STR.	23'-7"	189
K2	8	#4	STR.	2'-6"	13
S1	42	#4		3'-2"	89
S2	42	#4		7'-5"	208
S3	18	#4		6'-6"	78
U1	40	#4		3'-8"	98
U2	9	#4		5'-5"	33
V1	80	#5	STR.	4'-11"	410
V2	22	#5	STR.	6'-4"	145
V3	22	#5	STR.	6'-5"	147
REINFORCING STEEL =					3233 LBS
CLASS A CONCRETE BREAKDOWN					
POUR #1 CAP & LOWER PART OF WINGS					
			C.Y.		13.6
POUR #2 BACKWALL & UPPER PART OF WINGS					
			C.Y.		7.2
TOTAL CLASS A CONCRETE					
			C.Y.		20.8
HP 12 X 53 STEEL PILES					
	NO. 9		LIN.FT.		270

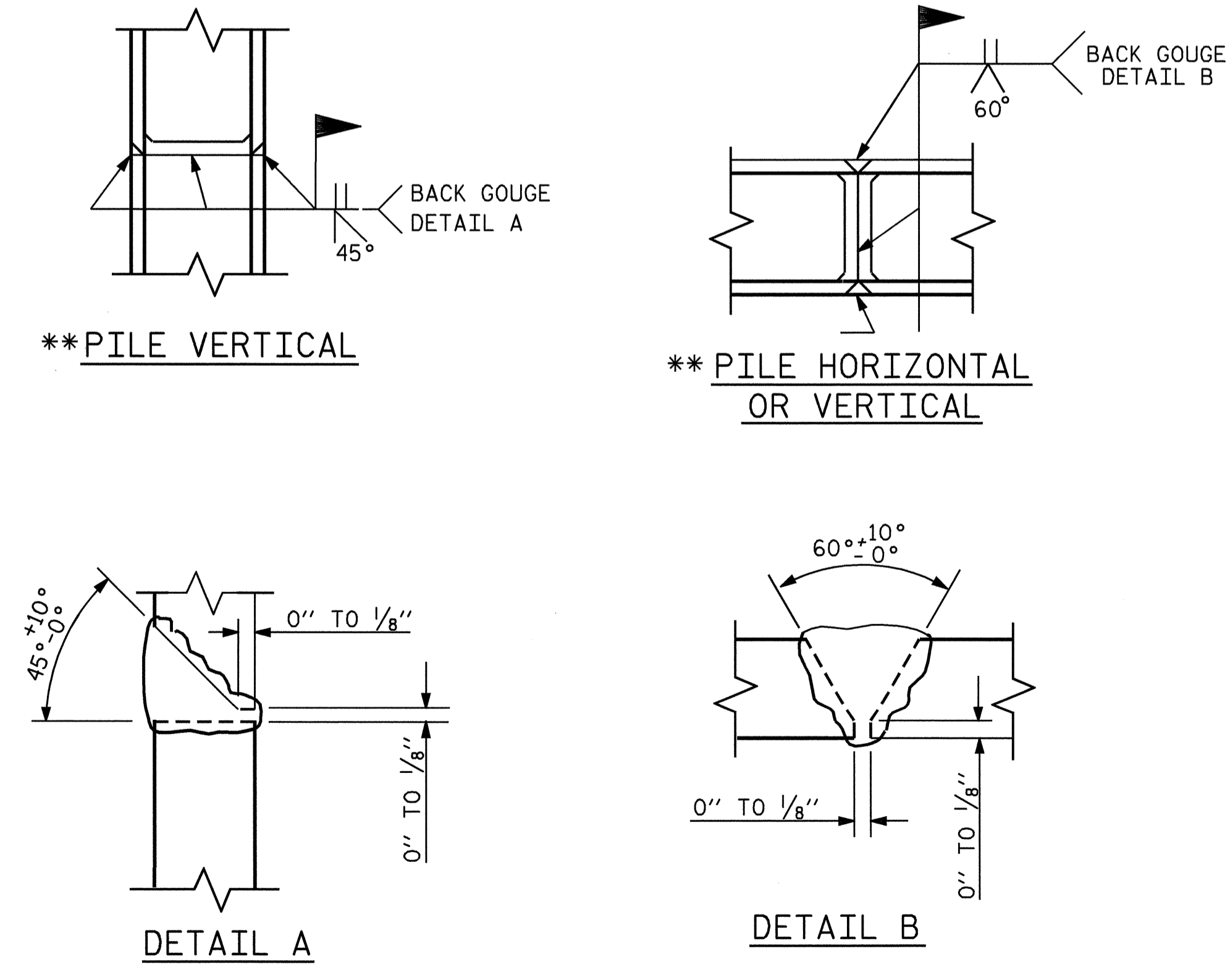


BAGGED STONE AND PIPE SHALL BE PLACED IMMEDIATELY AFTER COMPLETION OF END BENT EXCAVATION. PIPE MAY BE EITHER CONCRETE, CORRUGATED STEEL, CORRUGATED ALUMINUM ALLOY, OR CORRUGATED PLASTIC. PERFORATED PIPE WILL NOT BE ALLOWED.

BAGGED STONE SHALL REMAIN IN PLACE UNTIL THE ENGINEER DIRECTS THAT IT BE REMOVED. THE CONTRACTOR SHALL REMOVE AND DISPOSE OF SILT ACCUMULATIONS AT BAGGED STONE WHEN SO DIRECTED BY THE ENGINEER. BAGS SHALL BE REMOVED AND REPLACED WHENEVER THE ENGINEER DETERMINES THAT THEY HAVE DETERIORATED AND LOST THEIR EFFECTIVENESS.

NO SEPARATE PAYMENT WILL BE MADE FOR THIS WORK AND THE ENTIRE COST OF THIS WORK SHALL BE INCLUDED IN THE UNIT CONTRACT PRICE BID FOR THE SEVERAL PAY ITEMS.

TEMPORARY DRAINAGE AT END BENT

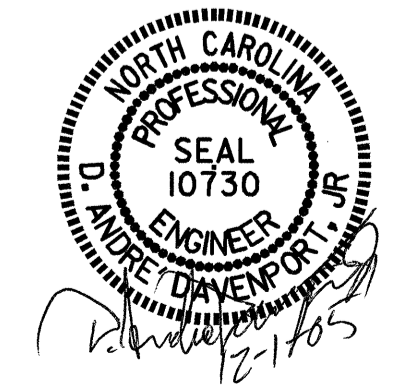


PILE SPLICE DETAILS
** POSITION OF PILE DURING WELDING.

PROJECT NO. B-4009
ANSON COUNTY
STATION: 38+66.50 -L-

SHEET 3 OF 3

STATE OF NORTH CAROLINA DEPARTMENT OF TRANSPORTATION RALEIGH					
SUBSTRUCTURE END BENT #1					
REVISIONS					
NO.	BY:	DATE:	NO.	BY:	DATE:
1			3		
2			4		
SHEET NO. S-31					TOTAL SHEETS 64



DRAWN BY: A. SORSENGINH/B. GREEN DATE: 3/8/05
CHECKED BY: A. COLE DATE: 3/16/05