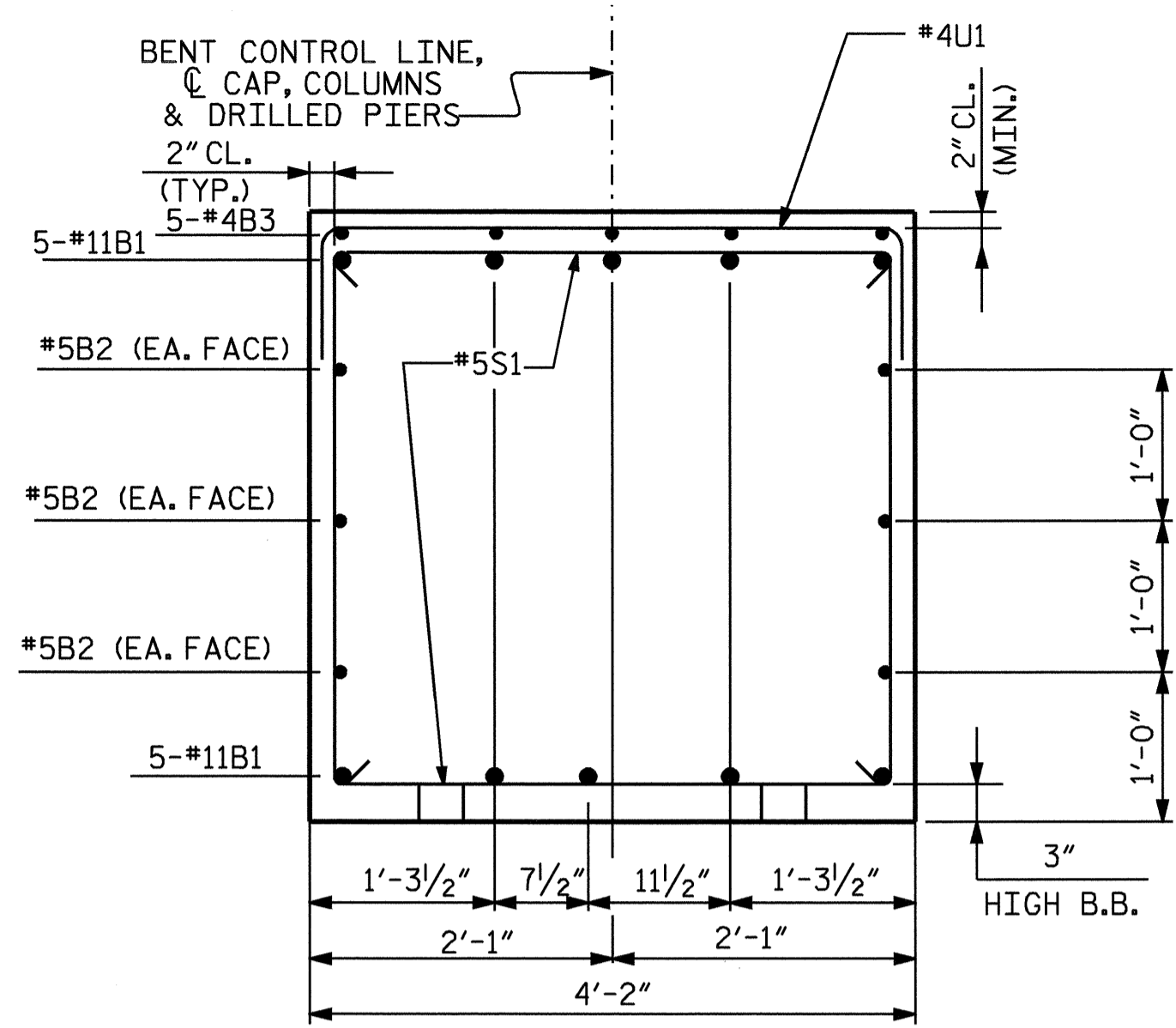
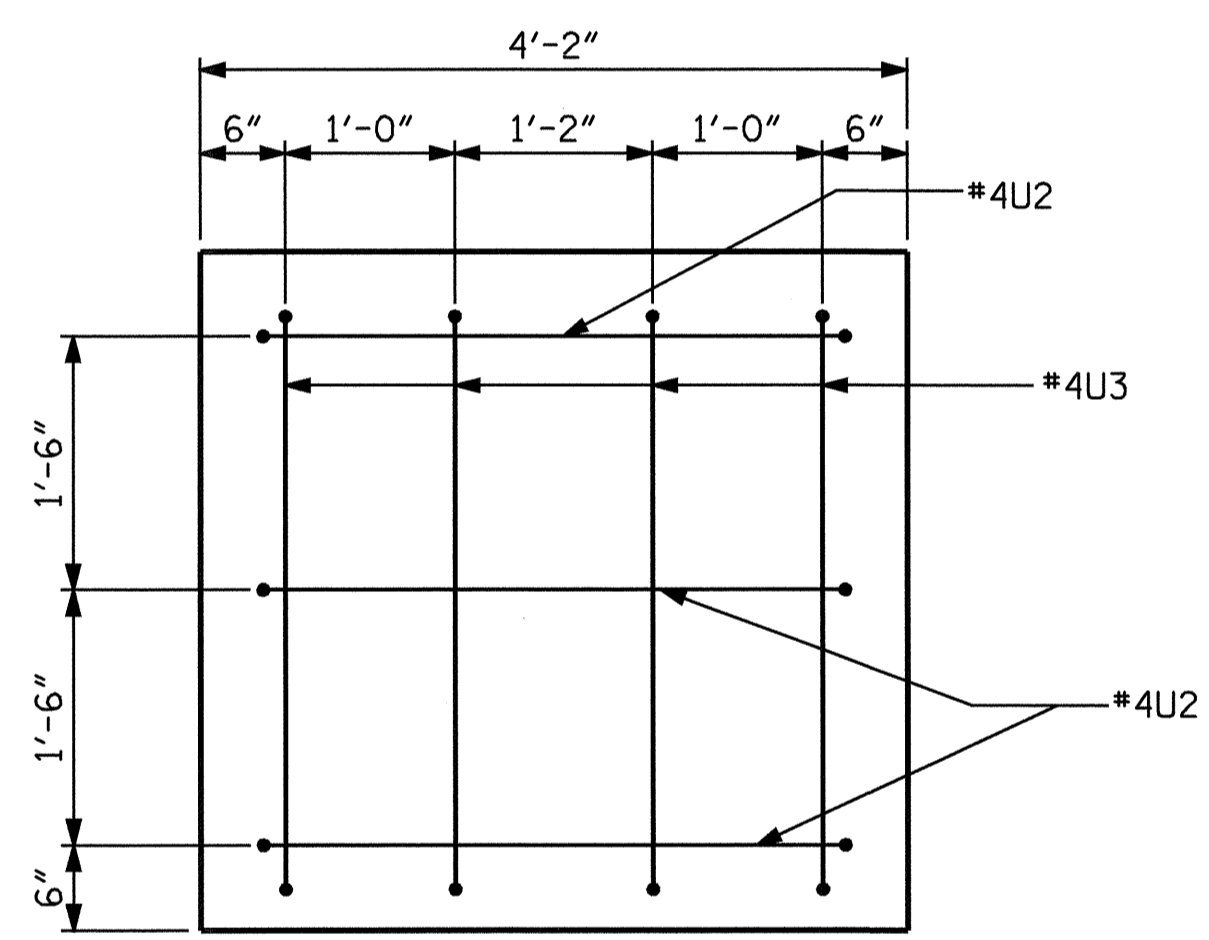


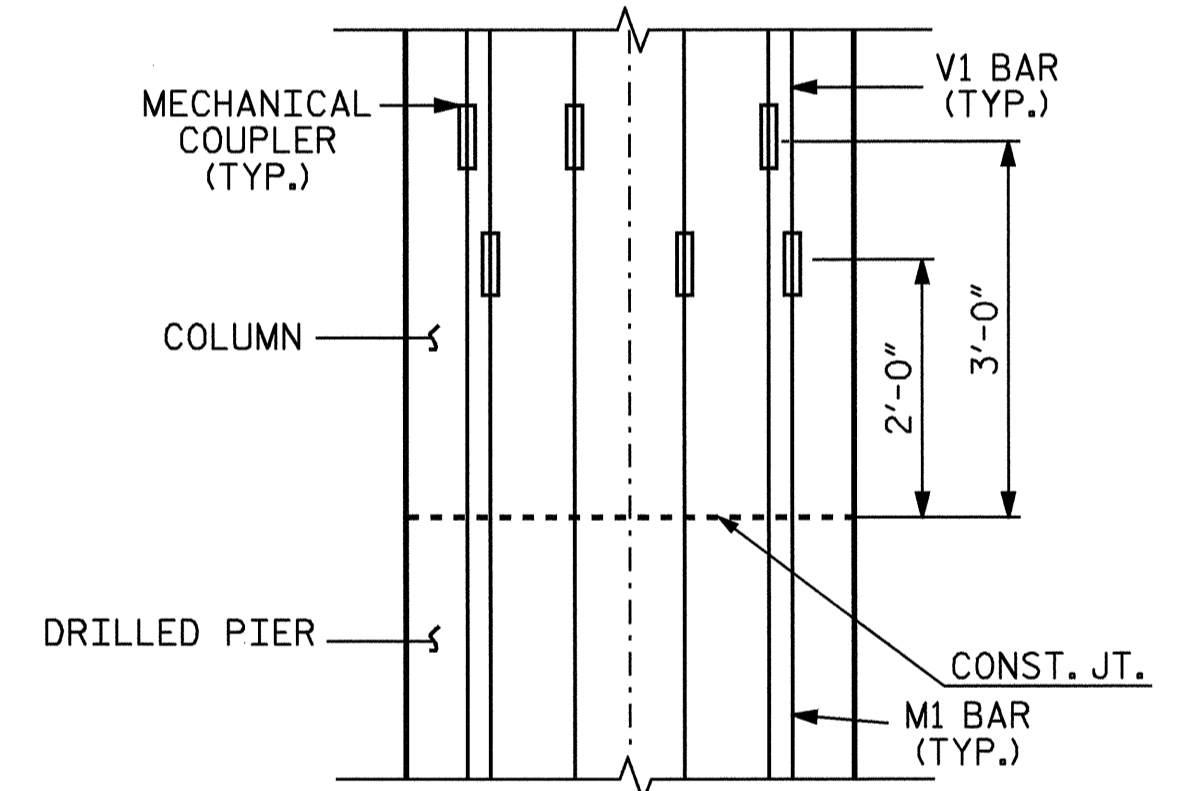
SECTION A-A



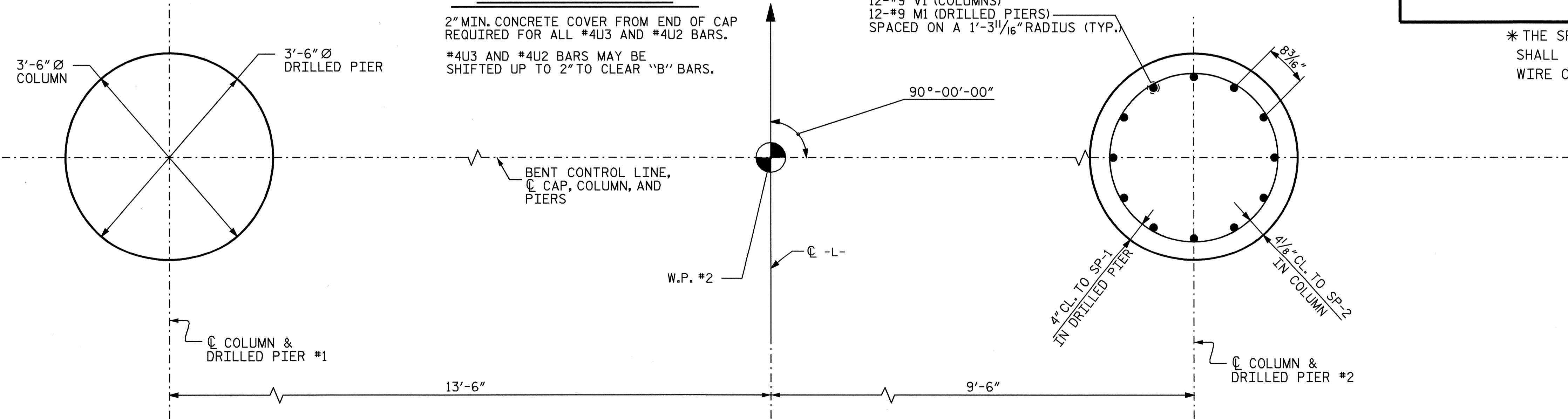
SECTION B-B



END VIEW



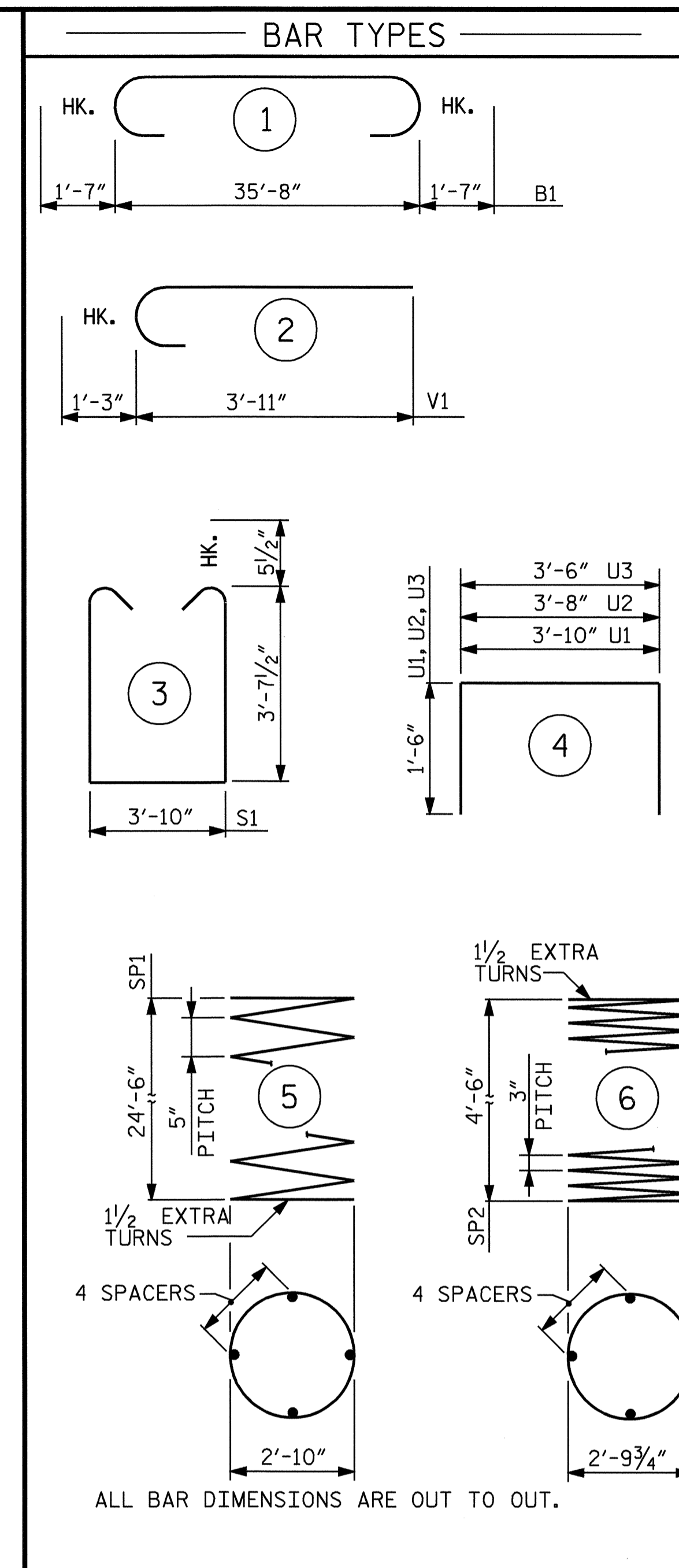
DETAIL "B"



PLAN OF COLUMNS AND DRILLED PIERS

2" MIN. CONCRETE COVER FROM END OF CAP REQUIRED FOR ALL #4U3 AND #4U2 BARS.  
#4U3 AND #4U2 BARS MAY BE SHIFTED UP TO 2" TO CLEAR "B" BARS.

12-#9 V1 (COLUMNS)  
12-#9 M1 (DRILLED PIERS)  
SPACED ON A 1'-3 1/16" RADIUS (TYP.)



ALL BAR DIMENSIONS ARE OUT TO OUT.

\* THE SP-1 SPIRAL REINFORCING STEEL SHALL BE W31 OR D-31 COLD DRAWN WIRE OR #5 PLAIN OR DEFORMED BAR.

\*\* THE SP-2 SPIRAL REINFORCING STEEL SHALL BE W20 OR D-20 COLD DRAWN WIRE OR #4 PLAIN OR DEFORMED BAR.

BILL OF MATERIAL

BENT #1					
BAR	NO.	SIZE	TYPE	LENGTH	WEIGHT
B1	10	#11		38'-10"	2063
B2	6	#5	STR.	35'-10"	224
B3	5	#4	STR.	10'-9"	36
M1	24	#9	STR.	30'-6"	2489
S1	36	#5		12'-0"	451
U1	33	#4		6'-10"	151
U2	6	#4		6'-8"	27
U3	8	#4		6'-6"	35
V1	24	#9		5'-2"	422
REINFORCING STEEL (LBS.)					5898
SP-1	2	*	5	528'-3"	1102
SP-2	2	**	6	169'-6"	226
SPIRAL REINFORCING STEEL (LBS.)					1328

CLASS A CONCRETE				
POUR #2 (COLUMNS)			3.0	C.Y.
POUR #3 (CAP)			23.1	C.Y.
TOTAL			26.1	C.Y.

DRILLED PIERS				
DRILLED PIER CONCRETE (CU. YARDS)				
POUR #1 (DRILLED PIERS)			17.8	C.Y.
3'-6" Ø DRILLED PIERS IN SOIL			40.0	FT.
3'-6" Ø DRILLED PIERS NOT IN SOIL			10.0	FT.
SPT TESTING	2	EACH		
SID INSPECTION	1	EACH		
CROSSHOLE SONIC LOGGING	1	EACH		
CSL TUBES			220.0	FT.
PERMANENT STEEL CASING FOR 3'-6" DRILLED PIER			40.0	FT.

PROJECT NO. B-4009  
ANSON COUNTY  
STATION: 38+66.50 -L-

SHEET 2 OF 2

STATE OF NORTH CAROLINA  
DEPARTMENT OF TRANSPORTATION  
RALEIGH

**SUBSTRUCTURE BENT #1**



REVISIONS						SHEET NO.
NO.	BY:	DATE:	NO.	BY:	DATE:	S-33
1			3			TOTAL SHEETS
2			4			64

DRAWN BY: A. COLE DATE: 7/05  
CHECKED BY: B. GREEN DATE: 8-05