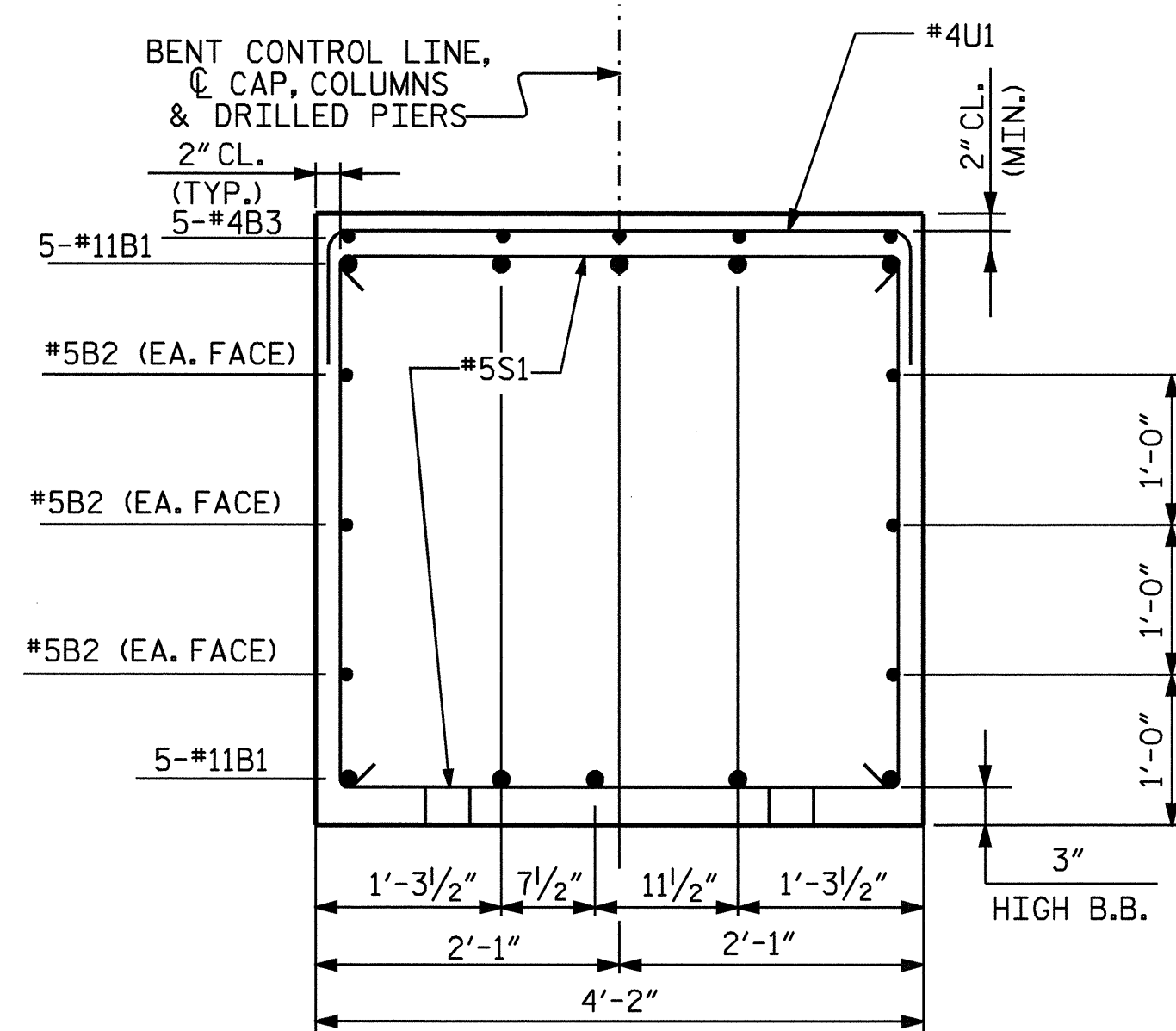
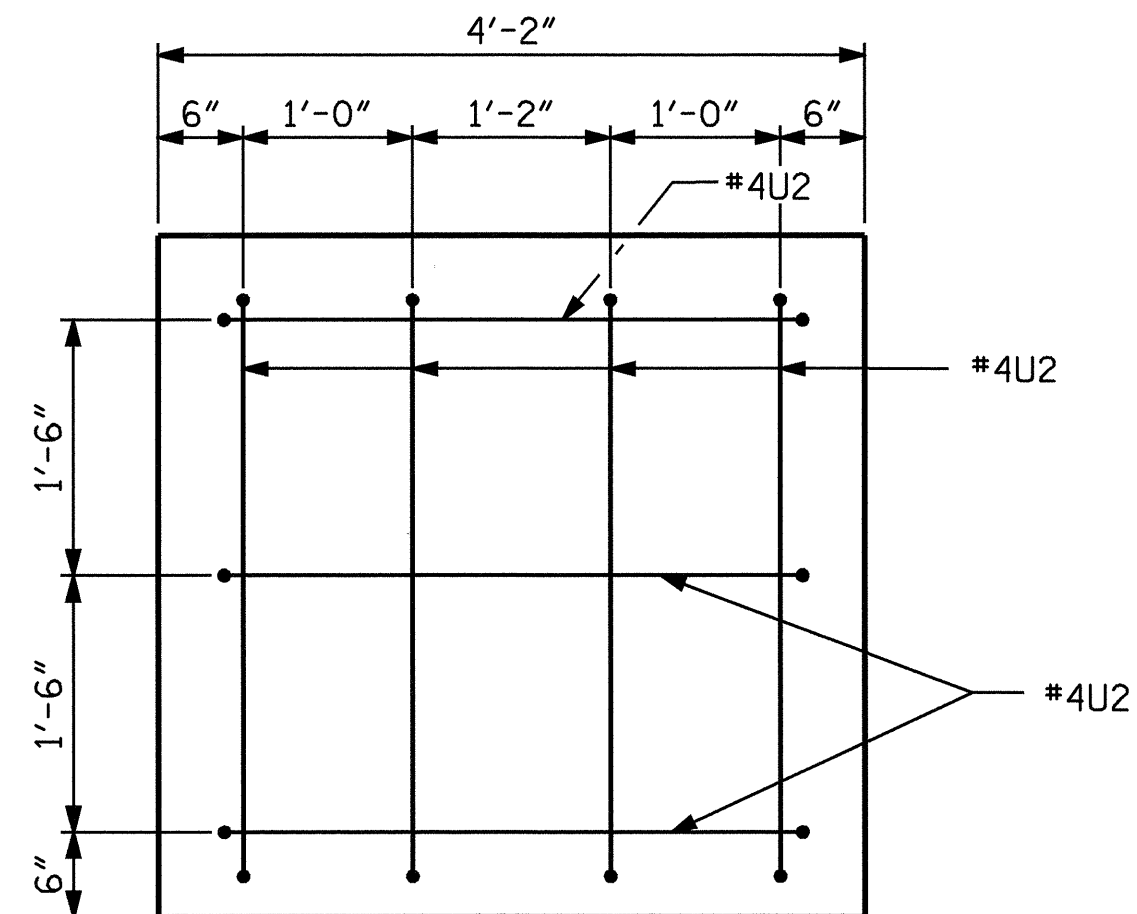


SECTION A-A

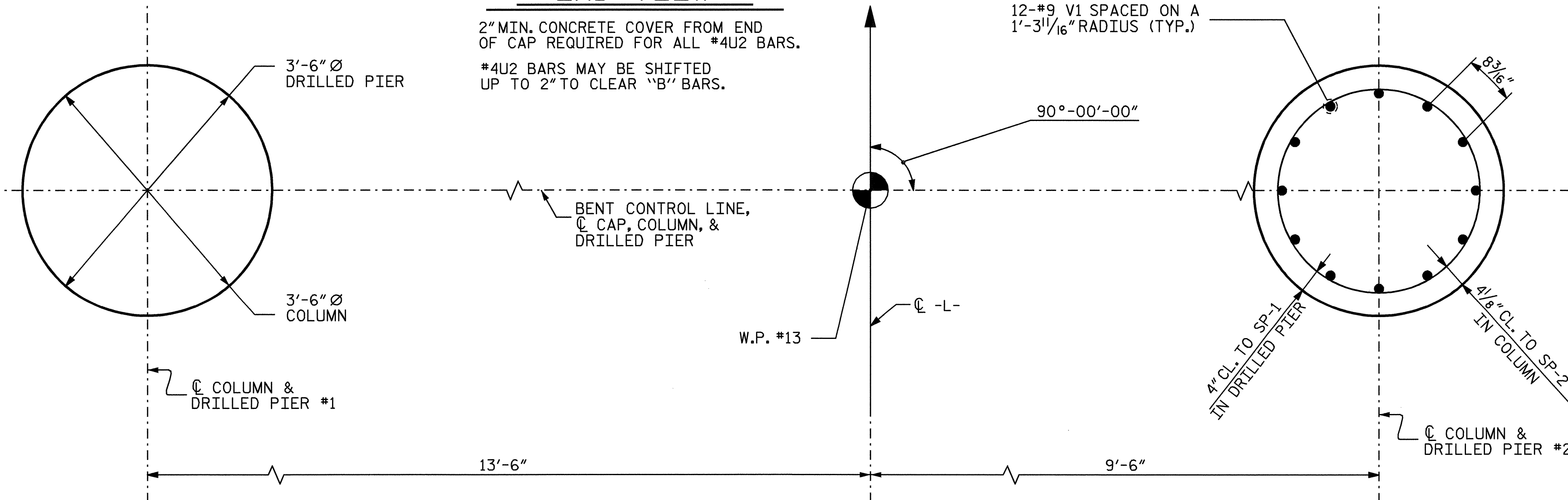


SECTION B-B



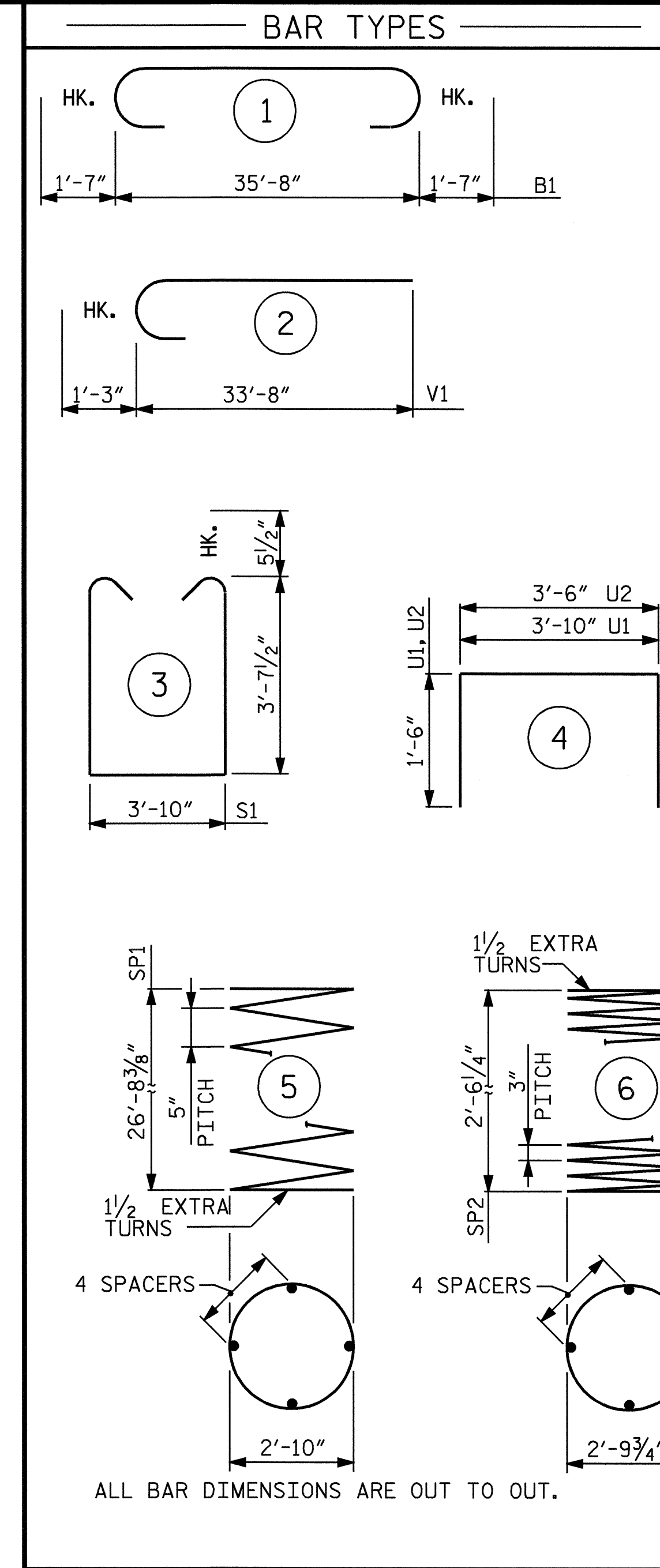
END VIEW

2" MIN. CONCRETE COVER FROM END OF CAP REQUIRED FOR ALL #4U2 BARS.
#4U2 BARS MAY BE SHIFTED UP TO 2" TO CLEAR "B" BARS.



PLAN OF COLUMNS AND DRILLED PIERS

ALL COLUMNS AND DRILLED PIERS ARE IDENTICAL



BILL OF MATERIAL

BENT #12

BAR	NO.	SIZE	TYPE	LENGTH	WEIGHT
B1	10	#11	1	38'-10"	2063
B2	6	#5	STR.	35'-10"	224
B3	5	#4	STR.	10'-9"	36
V1	24	#9	2	34'-11"	2849
S1	36	#5	3	12'-0"	451
U1	33	#4	4	6'-10"	151
U2	14	#4	4	6'-6"	61

REINFORCING STEEL (LBS.)					
5835					
SP-1	2	*	5	574'-1"	1198
SP-2	2	**	6	102'-2"	136
SPIRAL REINFORCING STEEL (LBS.) 1334					

CLASS A CONCRETE					
POUR #2 (COLUMNS) 1.6 C.Y.					
POUR #3 (CAP) 23.1 C.Y.					
TOTAL 24.7 C.Y.					

DRILLED PIERS					
DRILLED PIER CONCRETE (CU. YARDS)					
POUR #1 (DRILLED PIERS) 19.4 C.Y.					
3'-6" Ø DRILLED PIERS IN SOIL 34.4 FT.					
3'-6" Ø DRILLED PIERS NOT IN SOIL 20.0 FT.					
SPT TESTING 2 EACH					
SID INSPECTION 1 EACH					
CROSSHOLE SONIC LOGGING 1 EACH					
CSL TUBES 237.6 FT.					
PERMANENT STEEL CASING FOR 3'-6" Ø DRILLED PIERS 36.4 FT.					

* THE SP-1 SPIRAL REINFORCING STEEL SHALL BE W31 OR D-31 COLD DRAWN WIRE OR #5 PLAIN OR DEFORMED BAR.
** THE SP-2 SPIRAL REINFORCING STEEL SHALL BE W20 OR D-20 COLD DRAWN WIRE OR #4 PLAIN OR DEFORMED BAR.

PROJECT NO. B-4009
ANSON COUNTY
STATION: 38+66.50 -L-

SHEET 2 OF 2

STATE OF NORTH CAROLINA
DEPARTMENT OF TRANSPORTATION
RALEIGH

SUBSTRUCTURE
BENT #12



REVISIONS					
NO.	BY:	DATE:	NO.	BY:	DATE:
1			3		
2			4		

SHEET NO.	
S-55	TOTAL SHEETS 64

DRAWN BY: A. COLE DATE: 7/05
CHECKED BY: B. GREEN DATE: 8-05