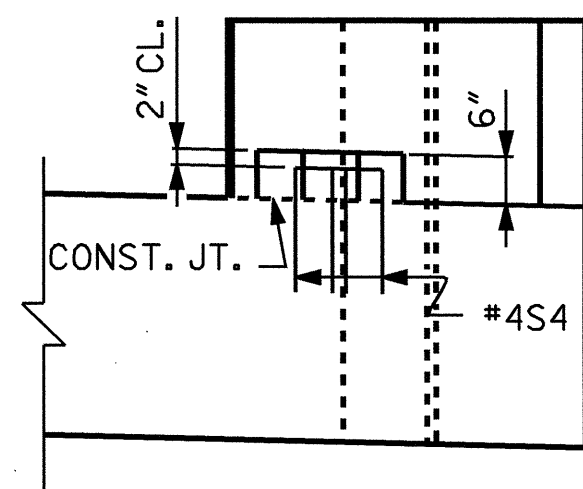
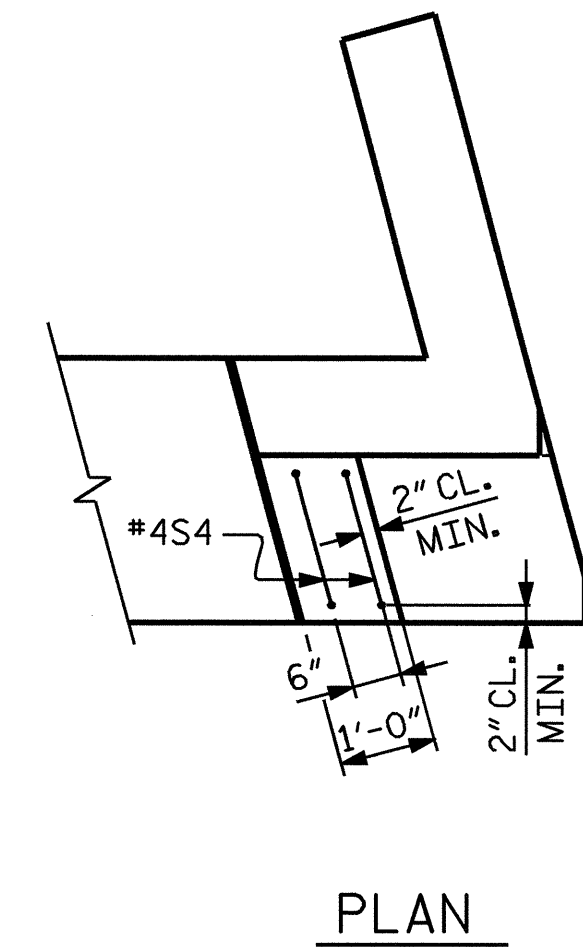
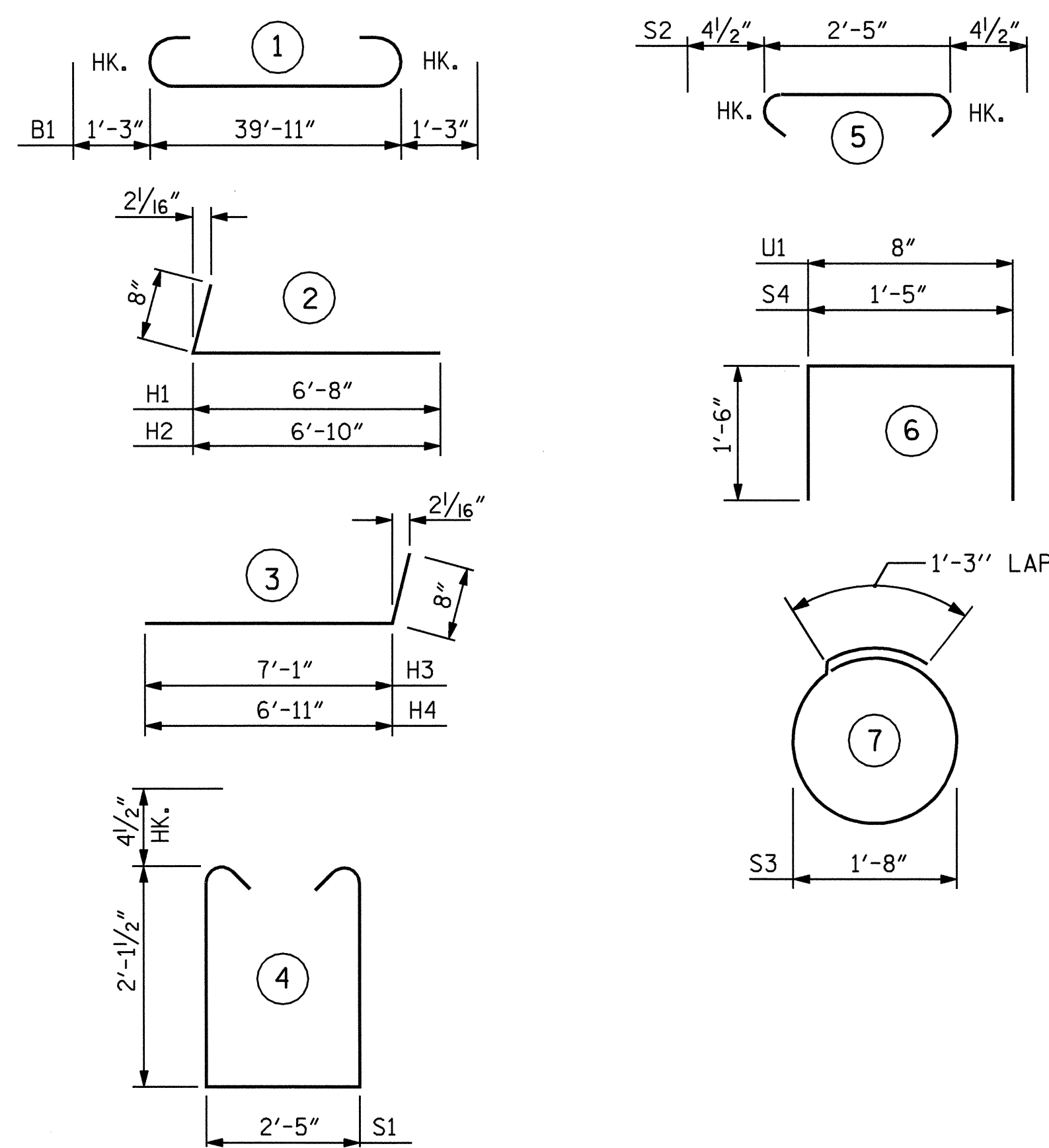


SECTION A-A



LATERAL GUIDE
(EACH END SIMILAR)



ALL BAR DIMENSIONS ARE OUT TO OUT.

BILL OF MATERIAL

END BENT#2

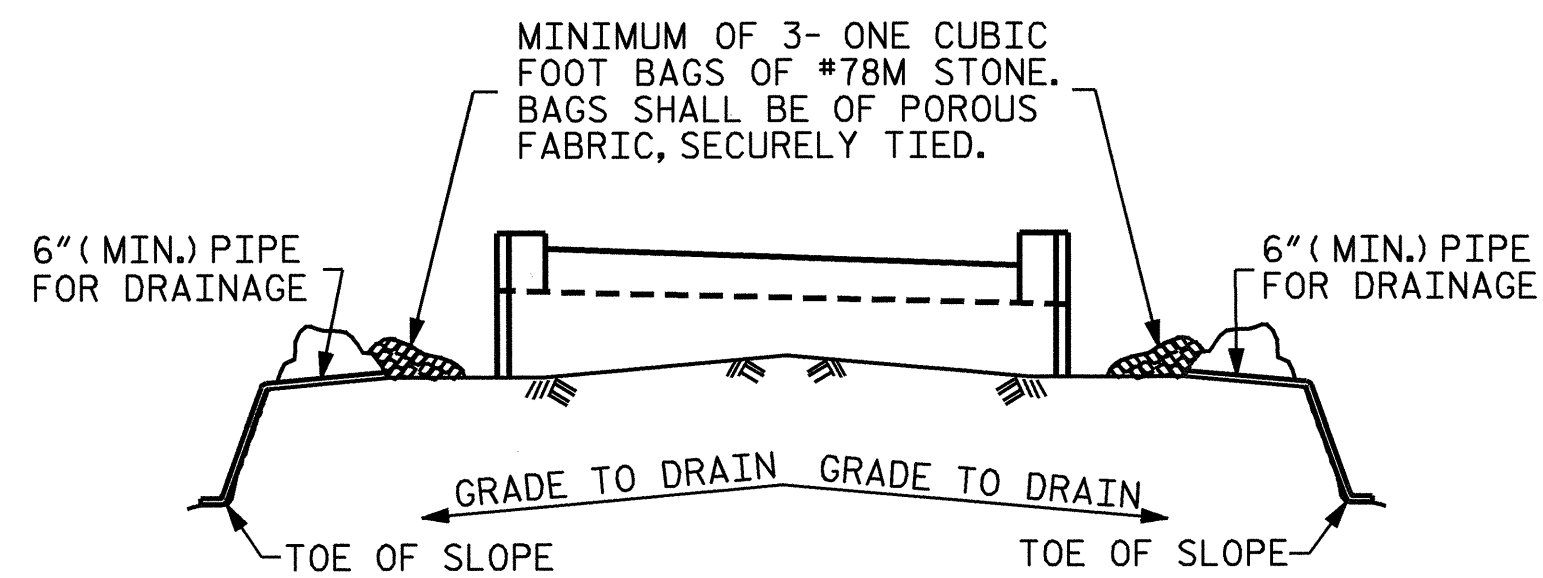
BAR	NO.	SIZE	TYPE	LENGTH	WEIGHT
B1	8	#9	1	42'-5"	1154
B2	2	#5	STR	40'-2"	84
B3	8	#4	STR	21'-4"	114
B4	10	#4	STR	2'-5"	16
D1	22	#8	STR	2'-3"	132
H1	8	#4	3	7'-4"	39
H2	8	#4	3	7'-6"	40
H3	8	#4	2	7'-9"	41
H4	8	#4	2	7'-7"	41
K1	8	#4	STR	2'-8"	14
K2	12	#4	STR	21'-4"	171
S1	38	#4	4	7'-5"	188
S2	38	#4	5	3'-2"	80
S3	20	#4	7	6'-6"	87
S4	4	#4	6	4'-5"	12
U1	34	#4	6	3'-8"	83
V1	20	#4	STR	5'-11"	79
V2	20	#4	STR	6'-1"	81
V3	68	#5	STR	4'-7"	325

REINFORCING STEEL (LBS) = 2781

CLASS A CONCRETE BREAKDOWN

POUR #1 CAP & LOWER PART OF WINGS (C.Y.)	11.9
POUR #2 UPPER PART OF WINGS (C.Y.)	5.7
POUR #3 LATERAL GUIDES (C.Y.)	0.1
TOTAL CLASS A CONCRETE (C.Y.)	17.7

HP 12 X 53 STEEL PILES NO. 10 (LIN FT.) 250

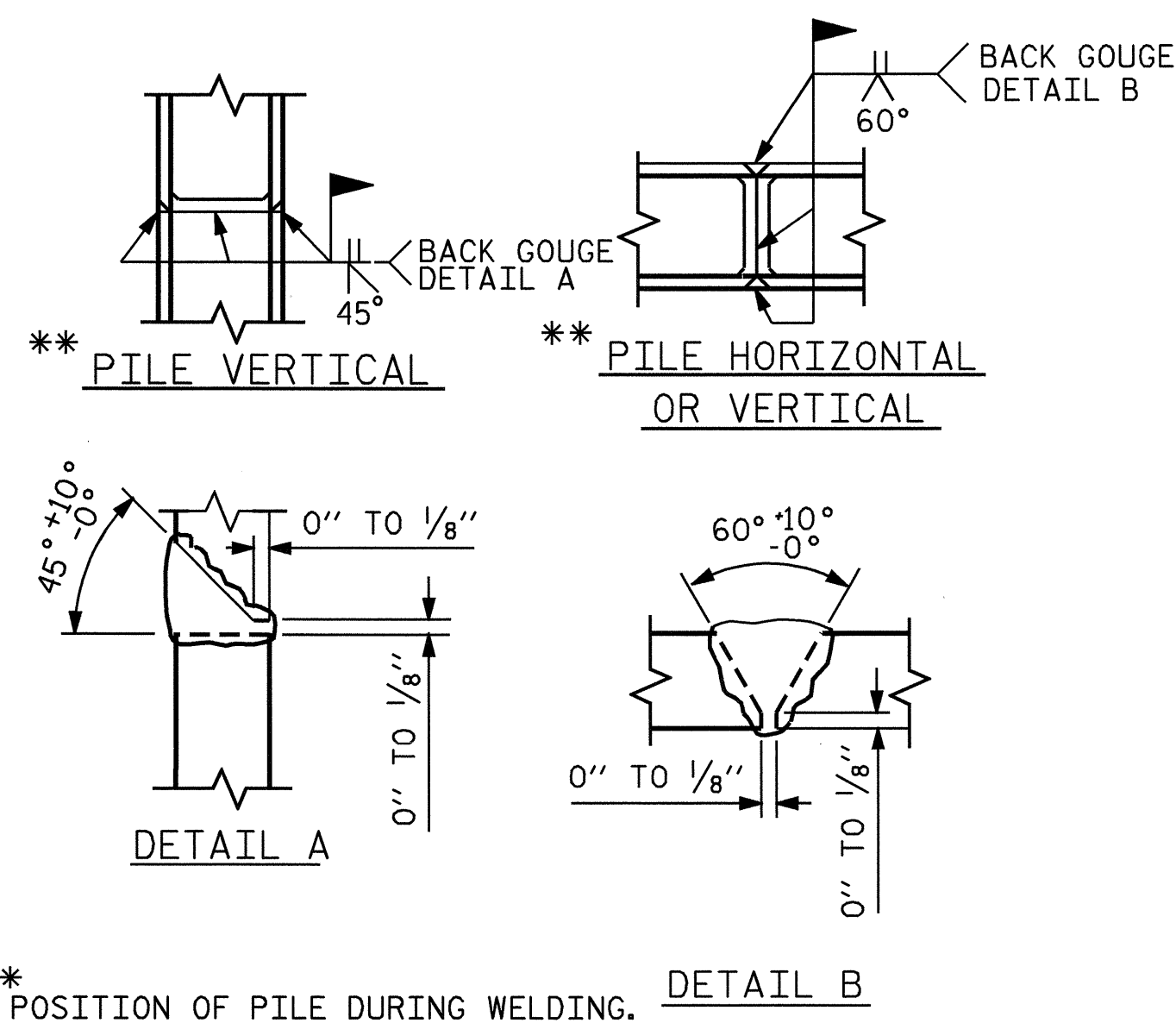


BAGGED STONE AND PIPE SHALL BE PLACED IMMEDIATELY AFTER COMPLETION OF END BENT EXCAVATION. PIPE MAY BE EITHER CONCRETE, CORRUGATED STEEL, CORRUGATED ALUMINUM ALLOY, OR CORRUGATED PLASTIC. PERFORATED PIPE WILL NOT BE ALLOWED.

BAGGED STONE SHALL REMAIN IN PLACE UNTIL THE ENGINEER DIRECTS THAT IT BE REMOVED. THE CONTRACTOR SHALL REMOVE AND DISPOSE OF SILT ACCUMULATIONS AT BAGGED STONE WHEN SO DIRECTED BY THE ENGINEER. BAGS SHALL BE REMOVED AND REPLACED WHENEVER THE ENGINEER DETERMINES THAT THEY HAVE DETERIORATED AND LOST THEIR EFFECTIVENESS.

NO SEPARATE PAYMENT WILL BE MADE FOR THIS WORK AND THE ENTIRE COST OF THIS WORK SHALL BE INCLUDED IN THE UNIT CONTRACT PRICE BID FOR THE SEVERAL PAY ITEMS.

TEMPORARY DRAINAGE AT END BENT



PILE SPLICE DETAILS

PROJECT NO. B-4266

RUTHERFORD COUNTY

STATION: 13+29.00 -L-

SHEET 3 OF 3

STATE OF NORTH CAROLINA
DEPARTMENT OF TRANSPORTATION
RALEIGH

**SUBSTRUCTURE
END BENT#2**

REVISIONS						TOTAL SHEETS
NO.	BY:	DATE:	NO.	BY:	DATE:	18
1			3			
2			4			

DRAWN BY : A. SORSENGINH/DAD DATE : 2/22/05
CHECKED BY : H.T. BARBOUR DATE : 6/05

