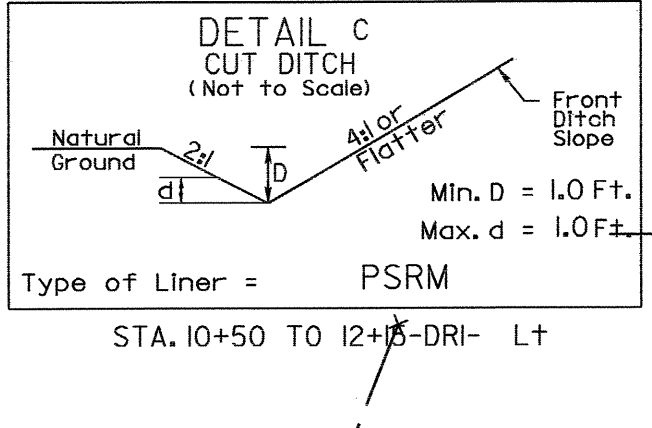
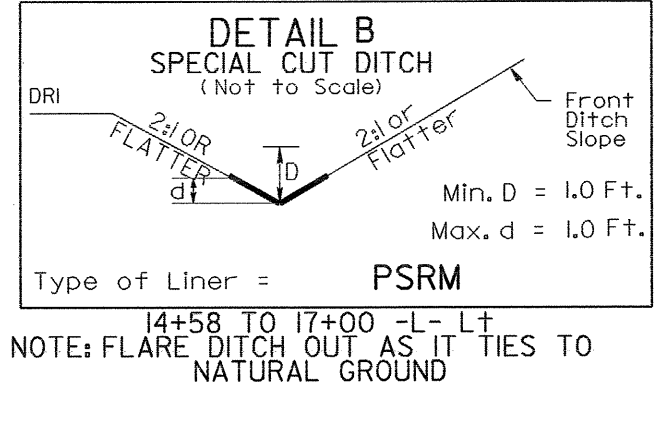
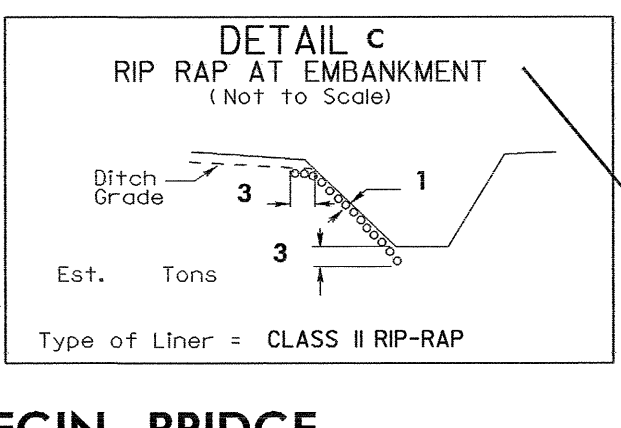
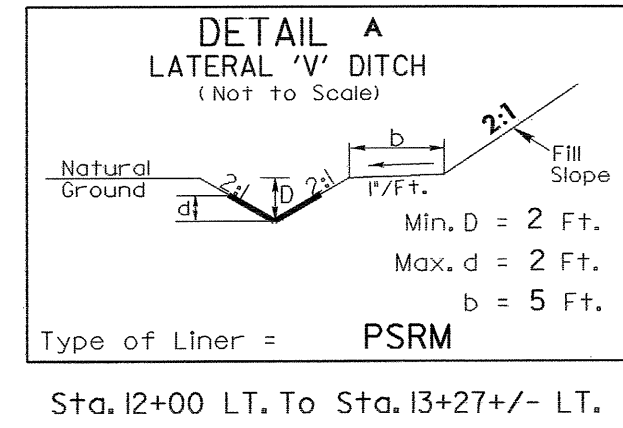
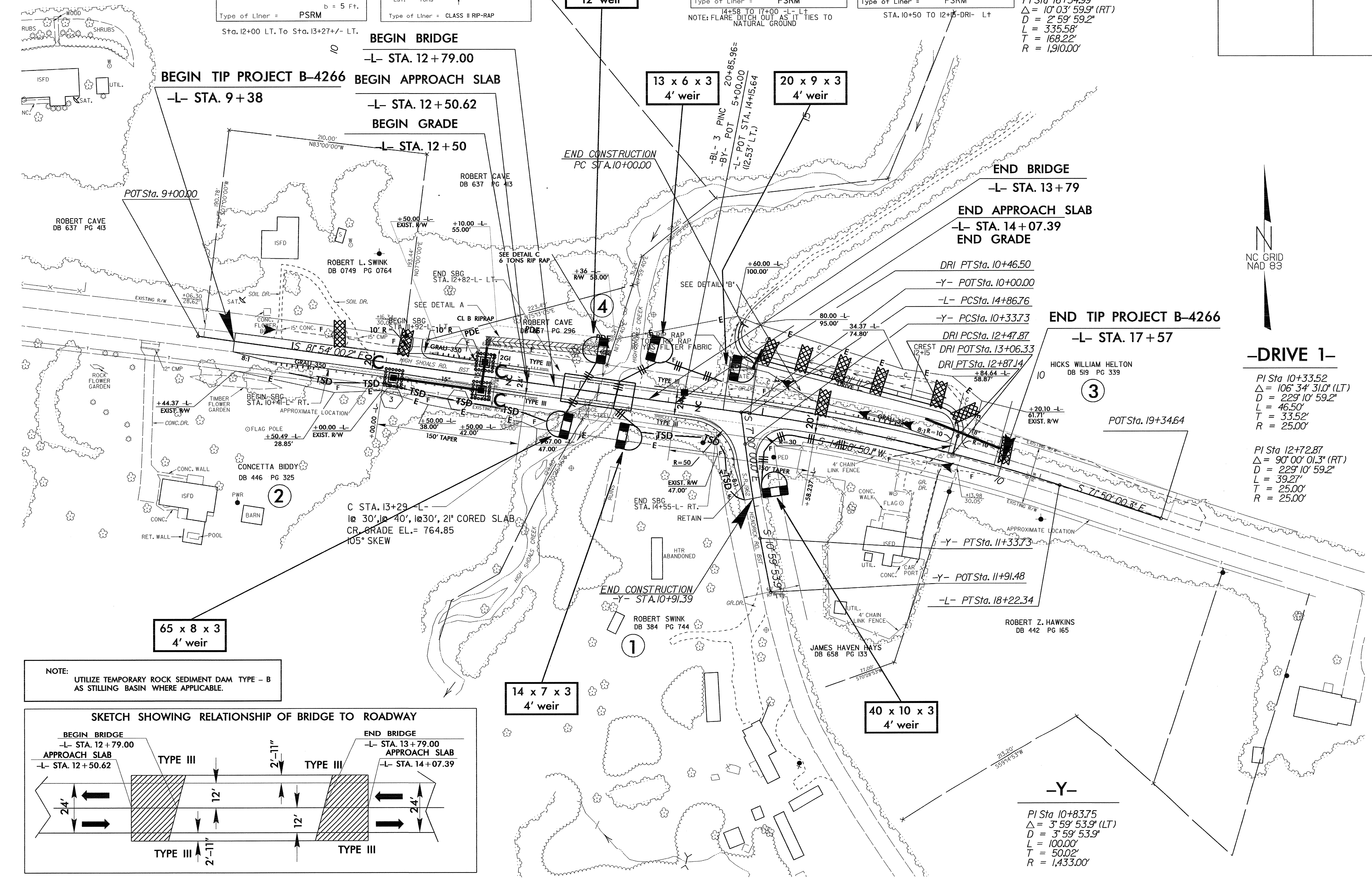


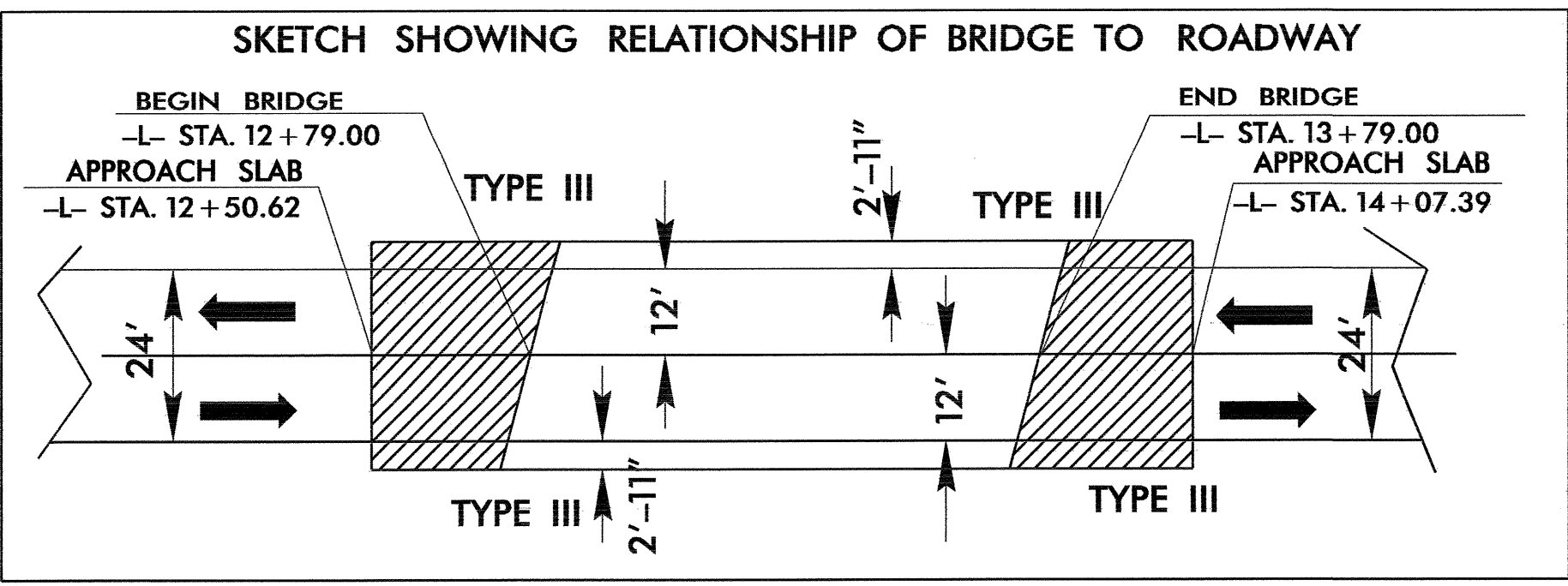
PROJECT REFERENCE NO.		SHEET NO.	
B-4266		EC-5/CONST.4	
RW SHEET NO.			
ROADWAY DESIGN ENGINEER		HYDRAULICS ENGINEER	



-L-  
PI Sta 16+54.99  
Δ = 10° 03' 59.9" (RT)  
D = 2° 59' 59.2"  
L = 335.58'  
T = 168.22'  
R = 1,910.00'



NOTE:  
UTILIZE TEMPORARY ROCK SEDIMENT DAM TYPE - B AS STILLING BASIN WHERE APPLICABLE.



-DRIVE 1-  
PI Sta 10+33.52  
Δ = 106° 34' 31.0" (LT)  
D = 229° 10' 59.2"  
L = 46.50'  
T = 33.52'  
R = 25.00'

PI Sta 12+72.87  
Δ = 90° 00' 01.3" (RT)  
D = 229° 10' 59.2"  
L = 39.27'  
T = 25.00'  
R = 25.00'

-Y-  
PI Sta 10+83.75  
Δ = 3° 59' 53.9" (LT)  
D = 3° 59' 53.9"  
L = 100.00'  
T = 50.02'  
R = 1,433.00'