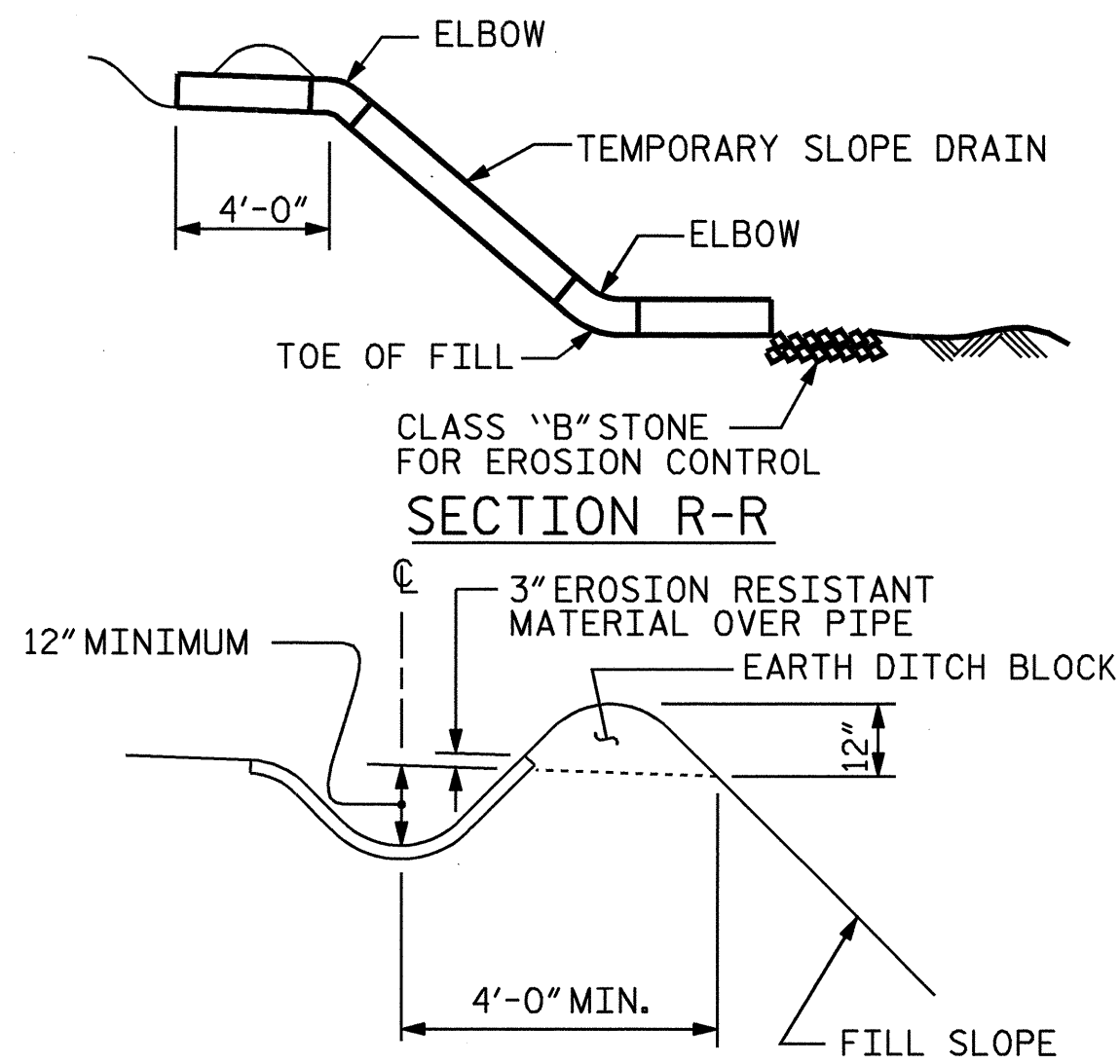
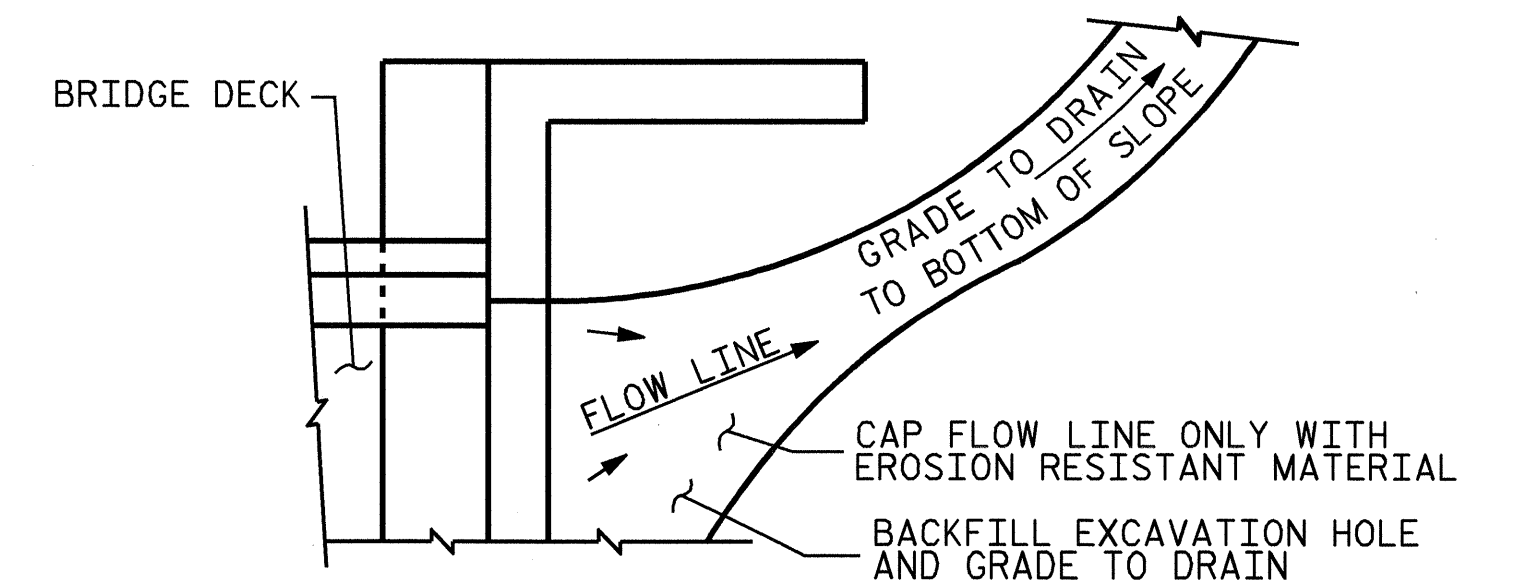


NOTE: IMMEDIATELY AFTER THE CONSTRUCTION OF THE APPROACH SLAB, THE CONTRACTOR SHALL PROVIDE TEMPORARY BERM AND SLOPE DRAIN. CONTRACTOR SHALL GRADE TO PIPE INLET AND PROVIDE EROSION RESISTANT MATERIAL AS SHOWN. THE EROSION RESISTANT MATERIAL SHALL BE EITHER 1) ASPHALT PLANT MIX, TYPE 1 OR TYPE 2, MIN. 2" DEPTH, 2) EROSION CONTROL MAT, OR 3) CONCRETE, AS DIRECTED BY THE ENGINEER. THE SLOPE DRAIN SHALL CONSIST OF A NON-PERFORATED TEMPORARY DRAINAGE PIPE, 12 INCHES IN DIAMETER.

PLAN VIEW



SECTION S-S

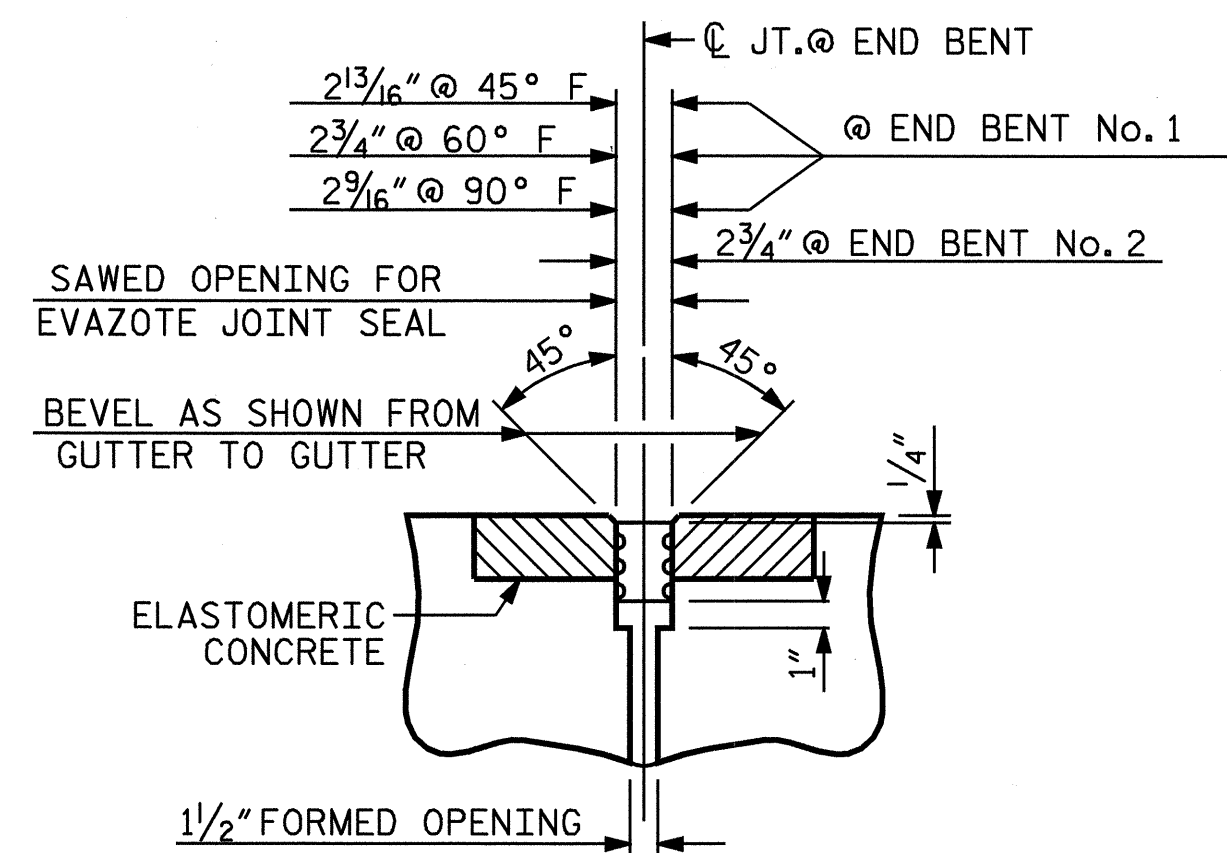
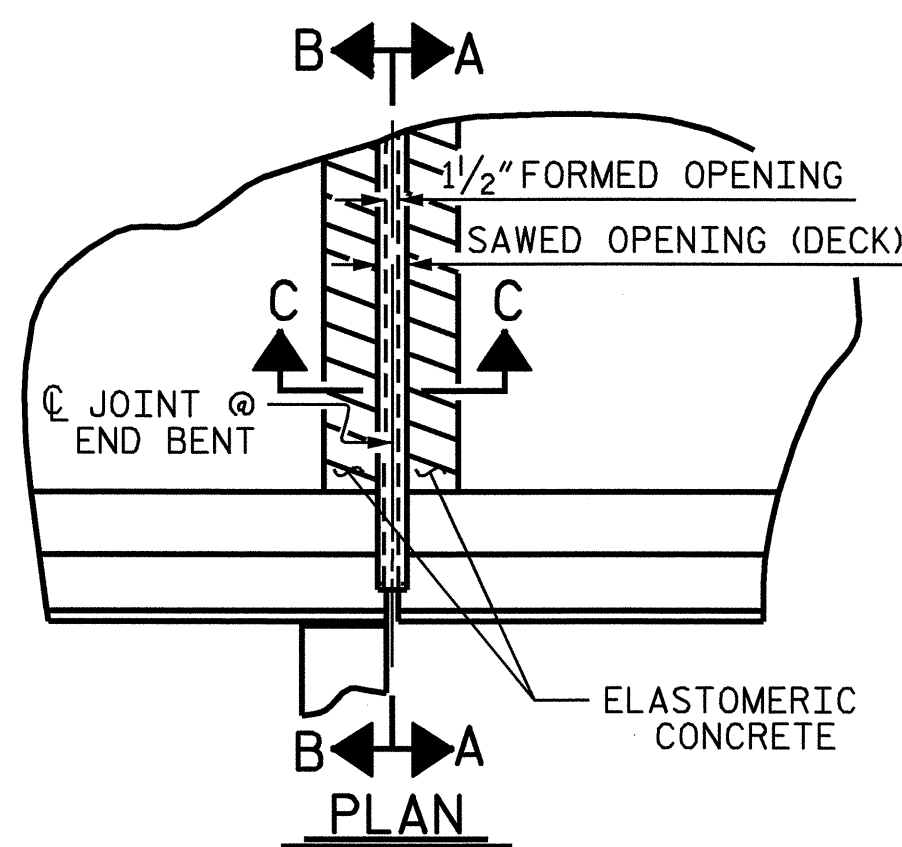


NOTE: IF THE APPROACH SLAB IS NOT CONSTRUCTED IMMEDIATELY AFTER THE BACKFILLING OF THE END BENT EXCAVATION, GRADE TO DRAIN TO THE BOTTOM OF THE SLOPE AND PROVIDE EROSION RESISTANT MATERIAL, SUCH AS FIBERGLASS ROVING OR AS DIRECTED BY THE ENGINEER TO PREVENT SOIL EROSION AND TO PROTECT THE AREA ADJACENT TO THE STRUCTURE. THE CONTRACTOR WILL BE REQUIRED TO REMOVE THESE MATERIALS PRIOR TO CONSTRUCTION OF THE APPROACH SLAB.

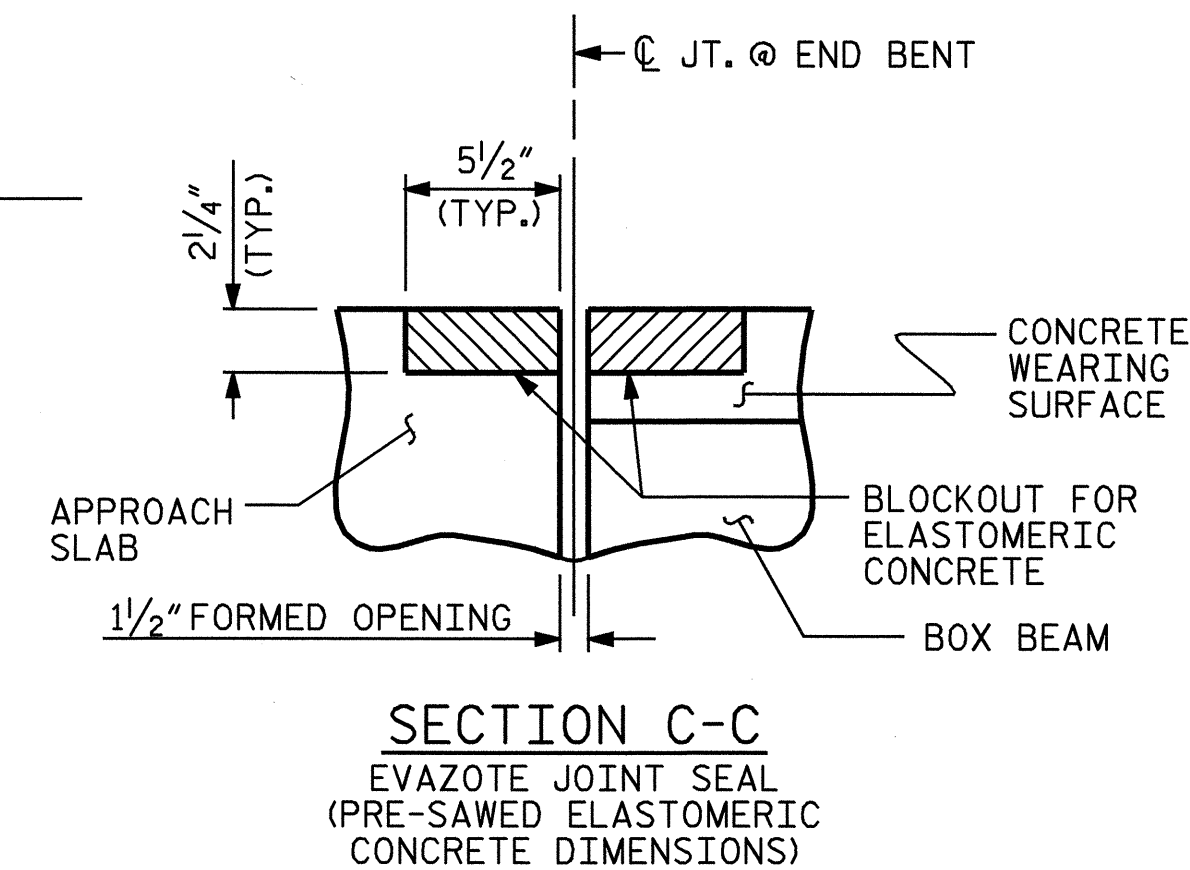
TEMPORARY DRAINAGE DETAIL

**TEMPORARY BERM AND SLOPE DRAIN DETAILS**

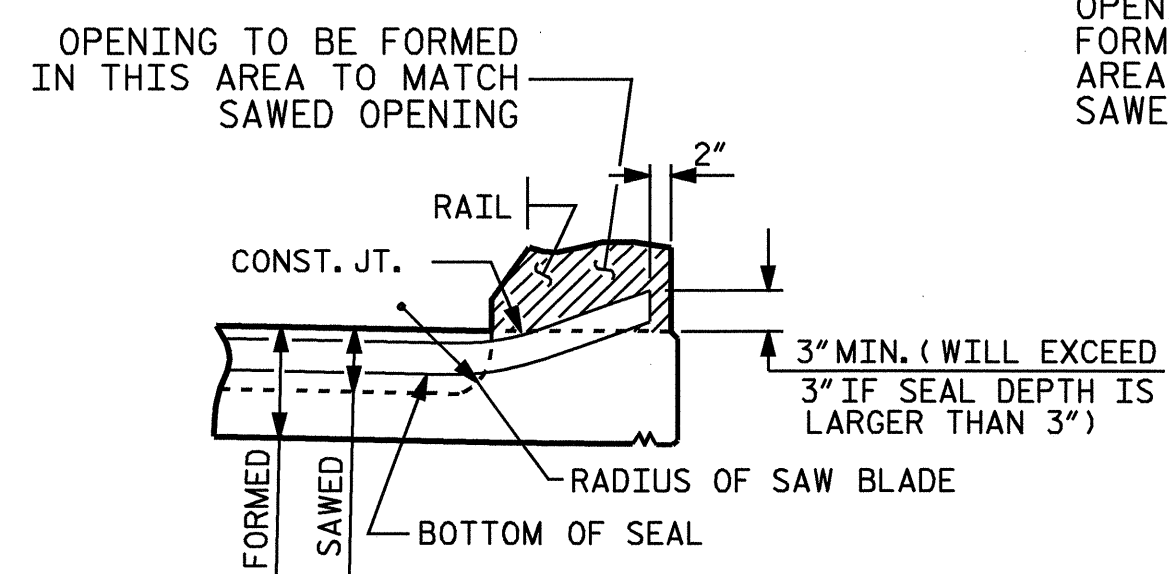
(TO BE USED WHEN SHOULDER BERM GUTTER IS REQUIRED)



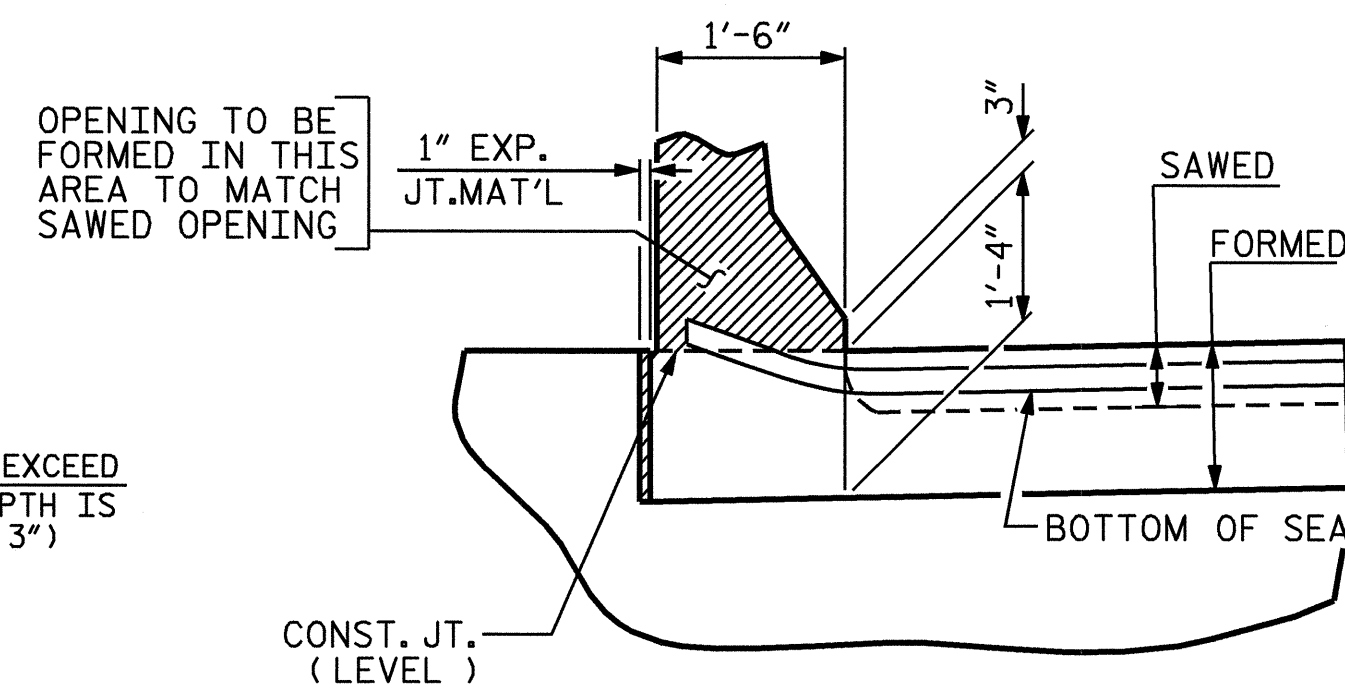
SECTION C-C  
EVAZOTE JOINT SEAL



SECTION C-C  
EVAZOTE JOINT SEAL  
(PRE-SAWED ELASTOMERIC CONCRETE DIMENSIONS)



SECTION A-A



SECTION B-B

**JOINT SEAL DETAILS @ END BENT**

(FOR BARRIER RAIL)

ELASTOMERIC CONCRETE	
END BENT NO.	ELASTOMERIC CONCRETE * (CU. FT.)
1	7.2
2	7.2
TOTAL	14.4

\* BASED ON THE MINIMUM BLOCKOUT SHOWN.

PROJECT NO. B-1303  
NORTHAMPTON COUNTY  
 STATION: 18+81.00 -L-

SHEET 3 OF 3

STATE OF NORTH CAROLINA  
 DEPARTMENT OF TRANSPORTATION  
 RALEIGH

STANDARD  
 BRIDGE APPROACH  
 SLAB DETAILS



REVISIONS						1988
NO.	BY:	DATE:	NO.	BY:	DATE:	SHEET NO.
1			3			S-20
2			4			TOTAL SHEETS 20

STD. NO. BAS10

ASSEMBLED BY : R. G. EMERSON	DATE : 01/05
CHECKED BY : B. N. GRADY	DATE : 01/05
DRAWN BY : FCJ 11/88	REV. 8/16/99 MAB/LES
CHECKED BY : ARB 11/88	REV. 10/17/00 RWW/LES
	REV. 5/7/03 RWW/JTE