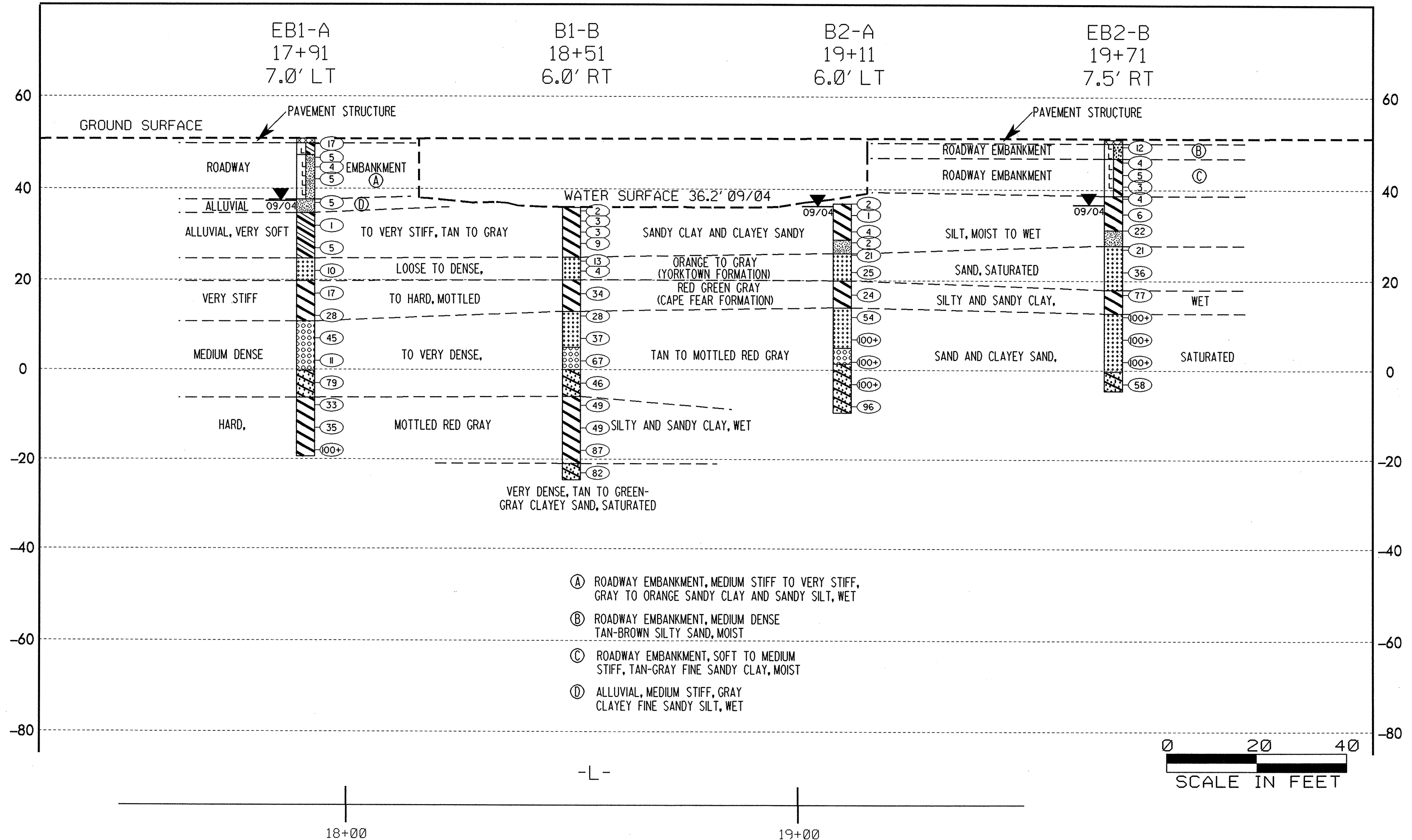
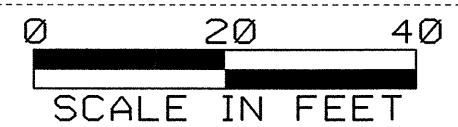


PROFILE THROUGH BORINGS PROJECTED ALONG -L-



- (A) ROADWAY EMBANKMENT, MEDIUM STIFF TO VERY STIFF, GRAY TO ORANGE SANDY CLAY AND SANDY SILT, WET
- (B) ROADWAY EMBANKMENT, MEDIUM DENSE TAN-BROWN SILTY SAND, MOIST
- (C) ROADWAY EMBANKMENT, SOFT TO MEDIUM STIFF, TAN-GRAY FINE SANDY CLAY, MOIST
- (D) ALLUVIAL, MEDIUM STIFF, GRAY CLAYEY FINE SANDY SILT, WET



-L-

18+00

19+00