

PROJECT REFERENCE NO.	SHEET NO.
U-3837	UC-5
DESIGNED BY: DMP	
DRAWN BY: DMP	
CHECKED BY: DMP	
APPROVED BY:	
REVISED:	
NORTH CAROLINA DEPARTMENT OF TRANSPORTATION	
PROJECT SERVICES UNIT PHONE: (919) 250-4128 FAX: (919) 250-4119	UTILITY CONSTRUCTION PLANS ONLY

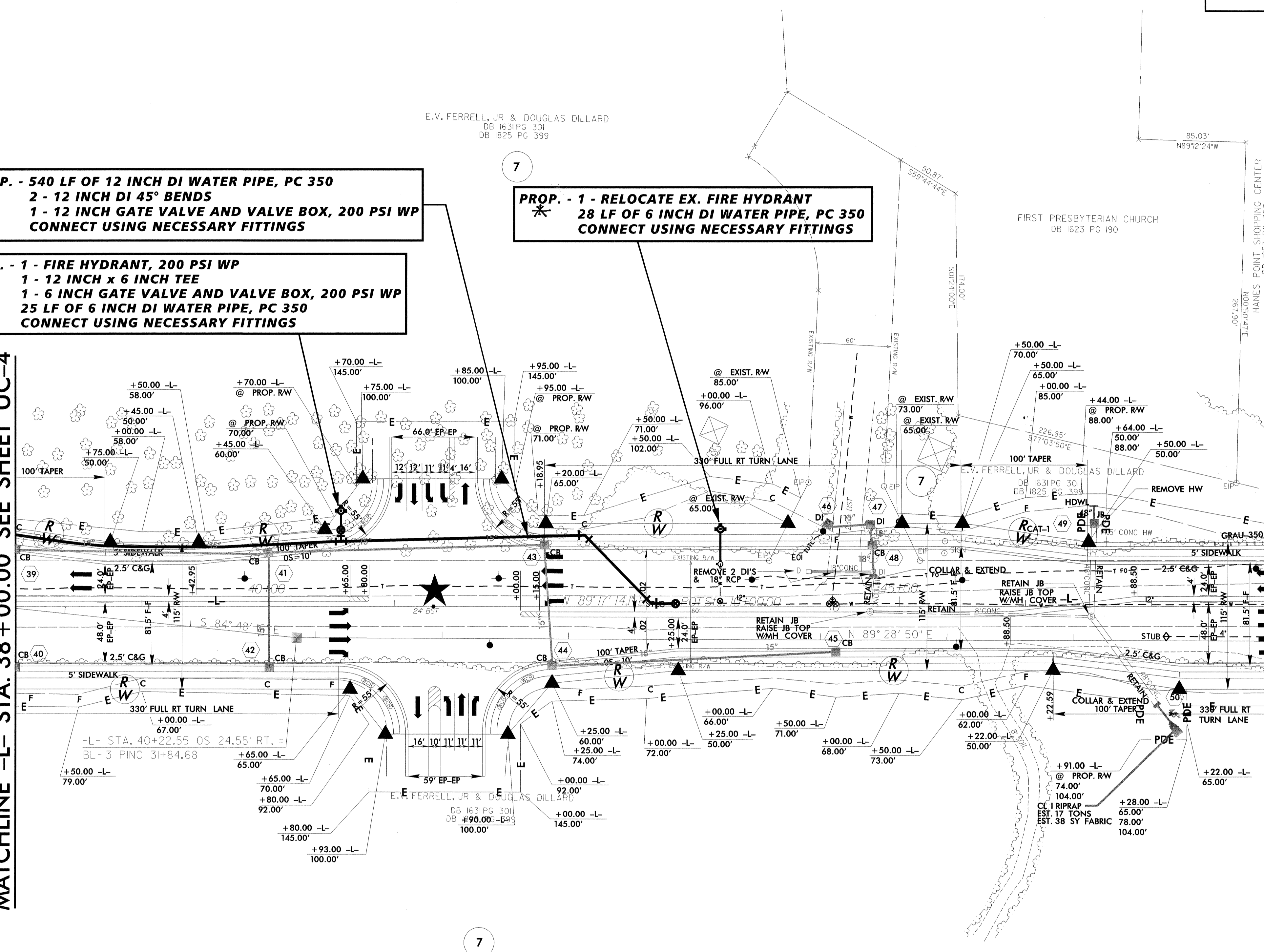
PROP. - 540 LF OF 12 INCH DI WATER PIPE, PC 350
 * 2 - 12 INCH DI 45° BENDS
 1 - 12 INCH GATE VALVE AND VALVE BOX, 200 PSI WP
 CONNECT USING NECESSARY FITTINGS

PROP. - 1 - FIRE HYDRANT, 200 PSI WP
 * 1 - 12 INCH x 6 INCH TEE
 1 - 6 INCH GATE VALVE AND VALVE BOX, 200 PSI WP
 25 LF OF 6 INCH DI WATER PIPE, PC 350
 CONNECT USING NECESSARY FITTINGS

PROP. - 1 - RELOCATE EX. FIRE HYDRANT
 * 28 LF OF 6 INCH DI WATER PIPE, PC 350
 CONNECT USING NECESSARY FITTINGS

MATCHLINE -L- STA. 38 + 00.00 SEE SHEET UC-4

MATCHLINE -L- STA. 48 + 00.00 SEE SHEET UC-6



NAD 83

UTILITY CONSTRUCTION
 * ALL WATER ITEMS ON THIS SHEET NOT IN THIS CONTRACT

E.V. FERRELL, JR. & DOUGLAS DILLARD
 DB 1631 PG 301
 DB 1825 PG 399

FIRST PRESBYTERIAN CHURCH
 DB 1623 PG 190

HANES POINT SHOPPING CENTER
 DB 1953 PG 327

7