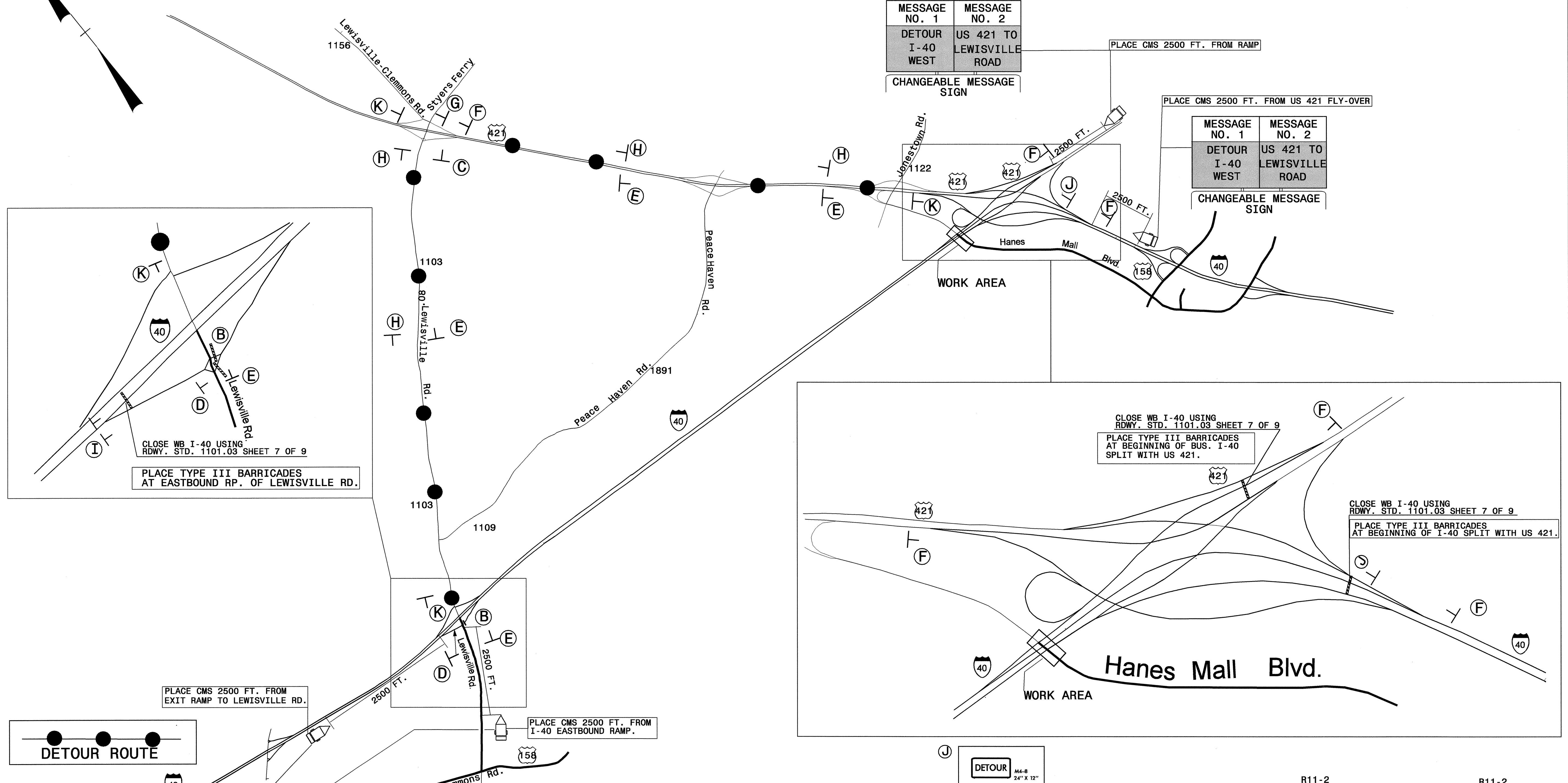
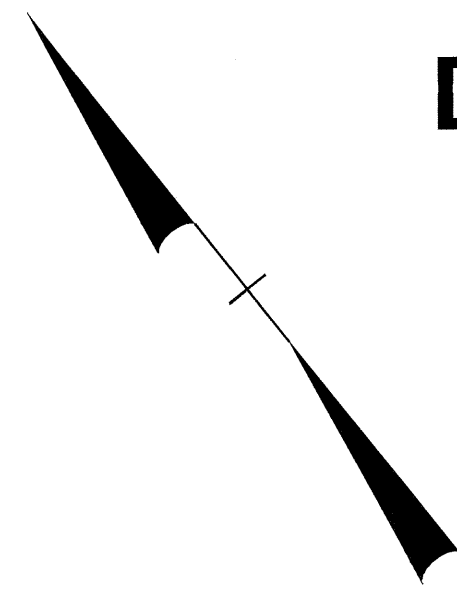


# DETOUR ROUTE FOR STRUCTURE REMOVAL AND GIRDER INSTALLATION



|                  |                           |
|------------------|---------------------------|
| MESSAGE NO. 1    | MESSAGE NO. 2             |
| DETOUR I-40 WEST | US 421 TO LEWISVILLE ROAD |

CHANGEABLE MESSAGE SIGN

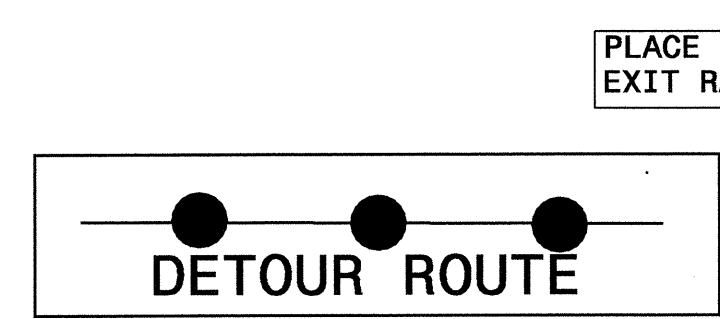
|                  |                           |
|------------------|---------------------------|
| MESSAGE NO. 1    | MESSAGE NO. 2             |
| DETOUR I-40 WEST | US 421 TO LEWISVILLE ROAD |

CHANGEABLE MESSAGE SIGN

CLOSE WB I-40 USING RDWY. STD. 1101.03 SHEET 7 OF 9  
PLACE TYPE III BARRICADES AT EASTBOUND RP. OF LEWISVILLE RD.

CLOSE WB I-40 USING RDWY. STD. 1101.03 SHEET 7 OF 9  
PLACE TYPE III BARRICADES AT BEGINNING OF BUS. I-40 SPLIT WITH US 421.

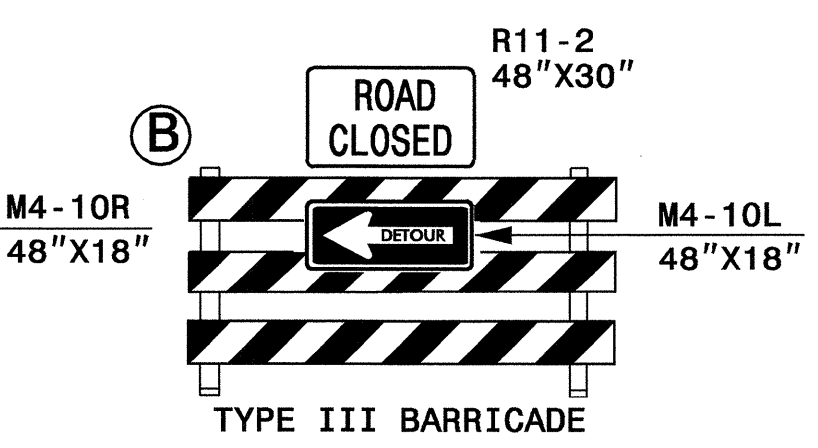
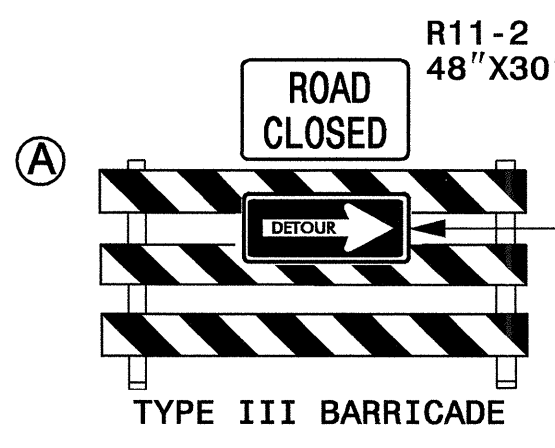
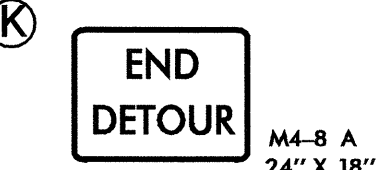
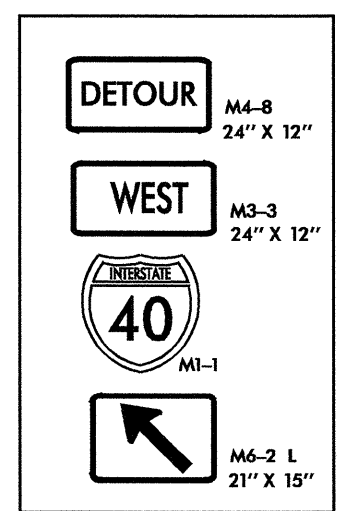
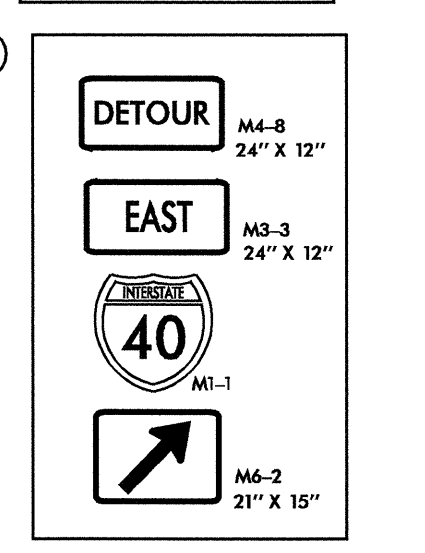
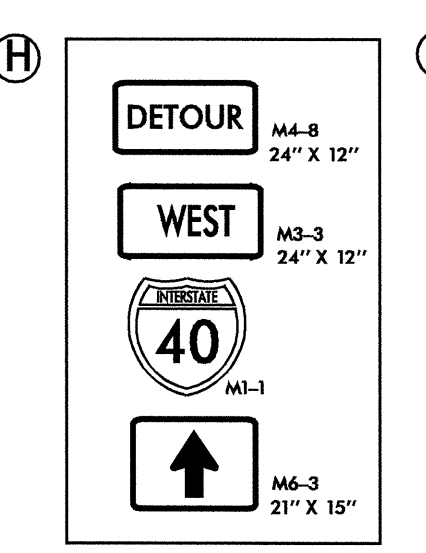
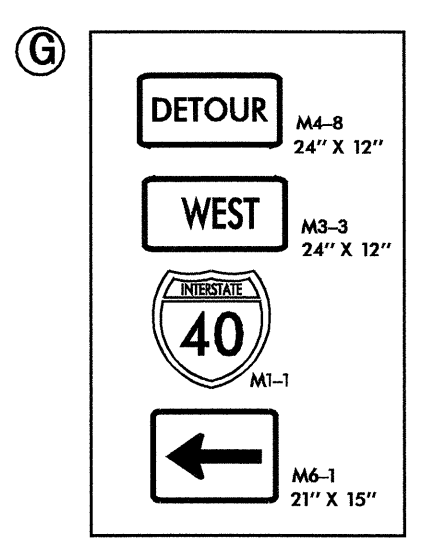
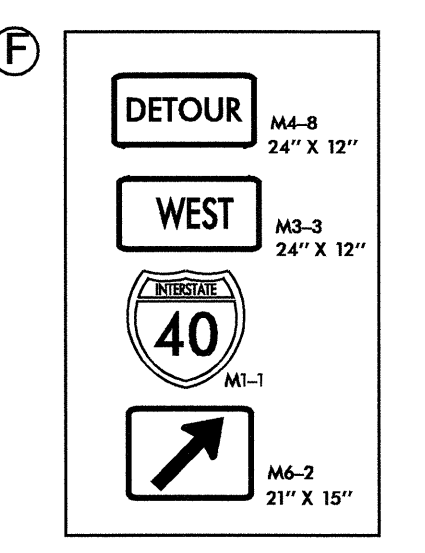
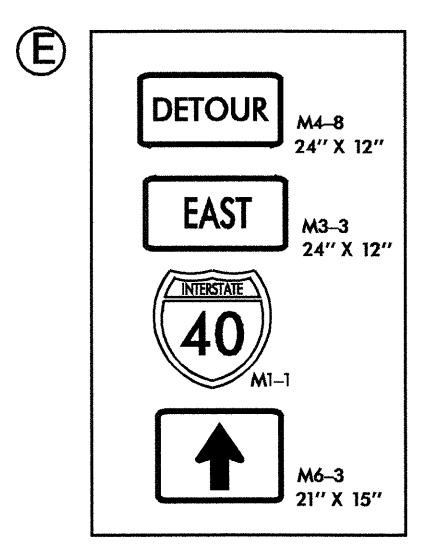
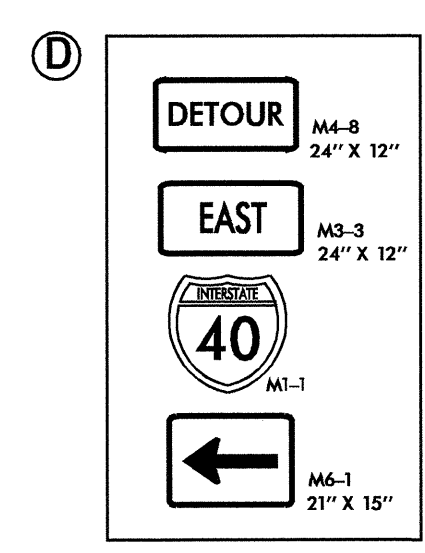
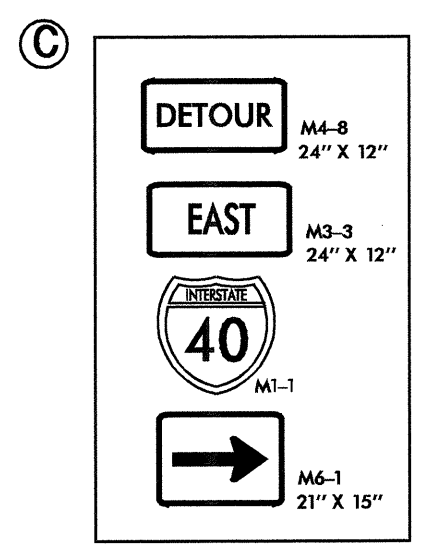
CLOSE WB I-40 USING RDWY. STD. 1101.03 SHEET 7 OF 9  
PLACE TYPE III BARRICADES AT BEGINNING OF I-40 SPLIT WITH US 421.



- MOUNT THE DETOUR SIGNS ON BOTH SIDES OF A DIVIDED ROADWAY.  
- ALL SIGN AND TYPE III BARRICADE LOCATIONS WILL BE VERIFIED BY THE ENGINEER PRIOR TO INSTALLATION.

|                  |                     |
|------------------|---------------------|
| MESSAGE NO. 1    | MESSAGE NO. 2       |
| DETOUR I-40 EAST | USE LEWISVILLE ROAD |

CHANGEABLE MESSAGE SIGN



APPROVED: *Joseph Ishik* DATE: 1/26/05  
SEAL  
NORTH CAROLINA PROFESSIONAL ENGINEER  
SEAL 028380  
JOSEPH ISHIK

**PHASE I, DETOUR ROUTE**

|                  |  |           |
|------------------|--|-----------|
| SCALE: NONE      |  | REVISIONS |
| DATE: SEPT 2004  |  |           |
| DESIGN BY: MM    |  |           |
| REVIEWED BY: CBH |  |           |

25-JAN-2005 14:08 \\lets-cctfso1\j3537\TCP\TCP\Detour Route\detour-ll.dgn mmckoy AT TEL093445