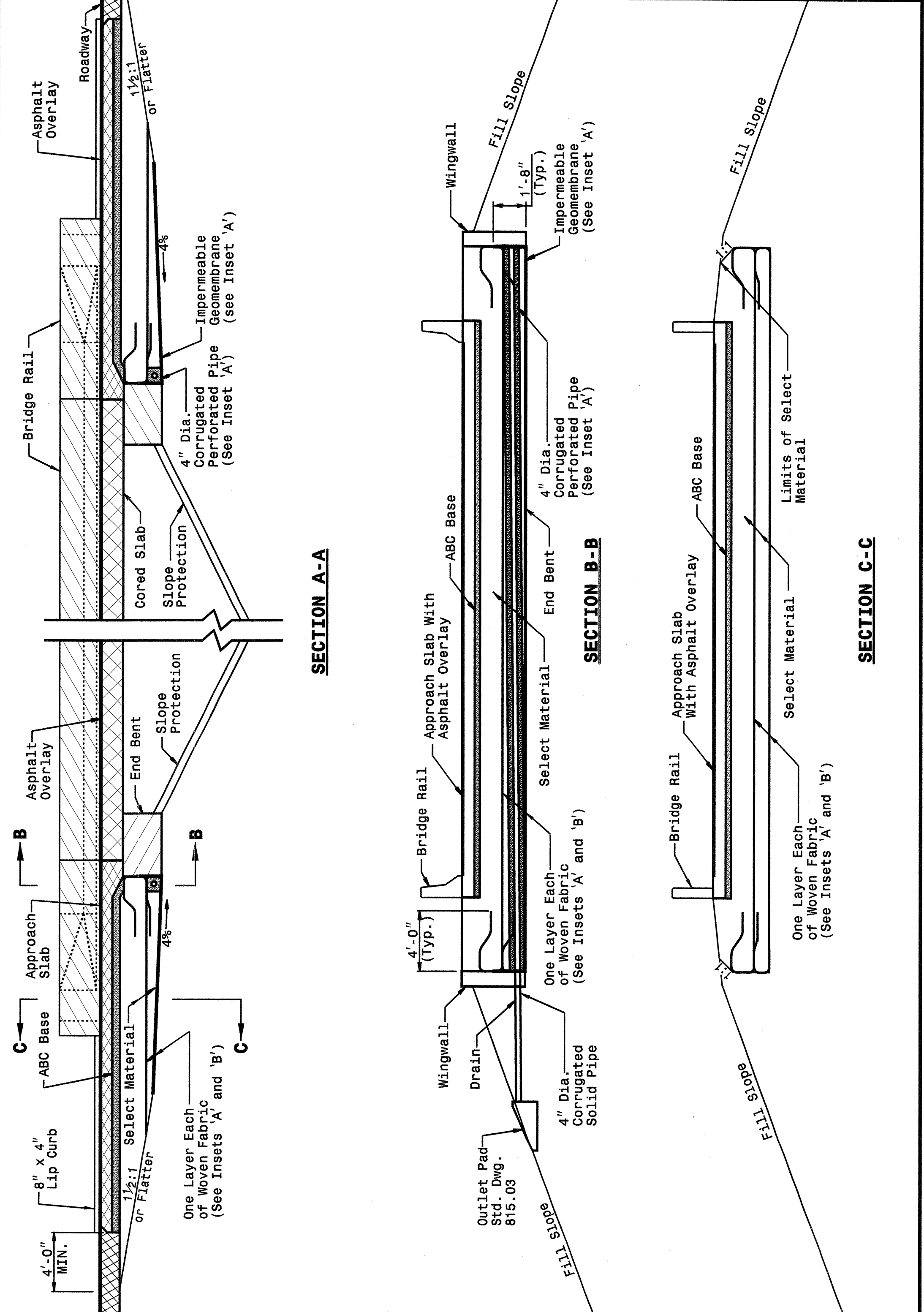


STATE OF NORTH CAROLINA DEPT. OF TRANSPORTATION DIVISION OF HIGHWAYS RALEIGH, N.C.

ENGLISH DETAIL DRAWING FOR REINFORCED BRIDGE APPROACH FILLS CORED SLAB BRIDGES

SHEET 3 OF 4 422D10



STATE OF NORTH CAROLINA DEPT. OF TRANSPORTATION DIVISION OF HIGHWAYS RALEIGH, N.C.

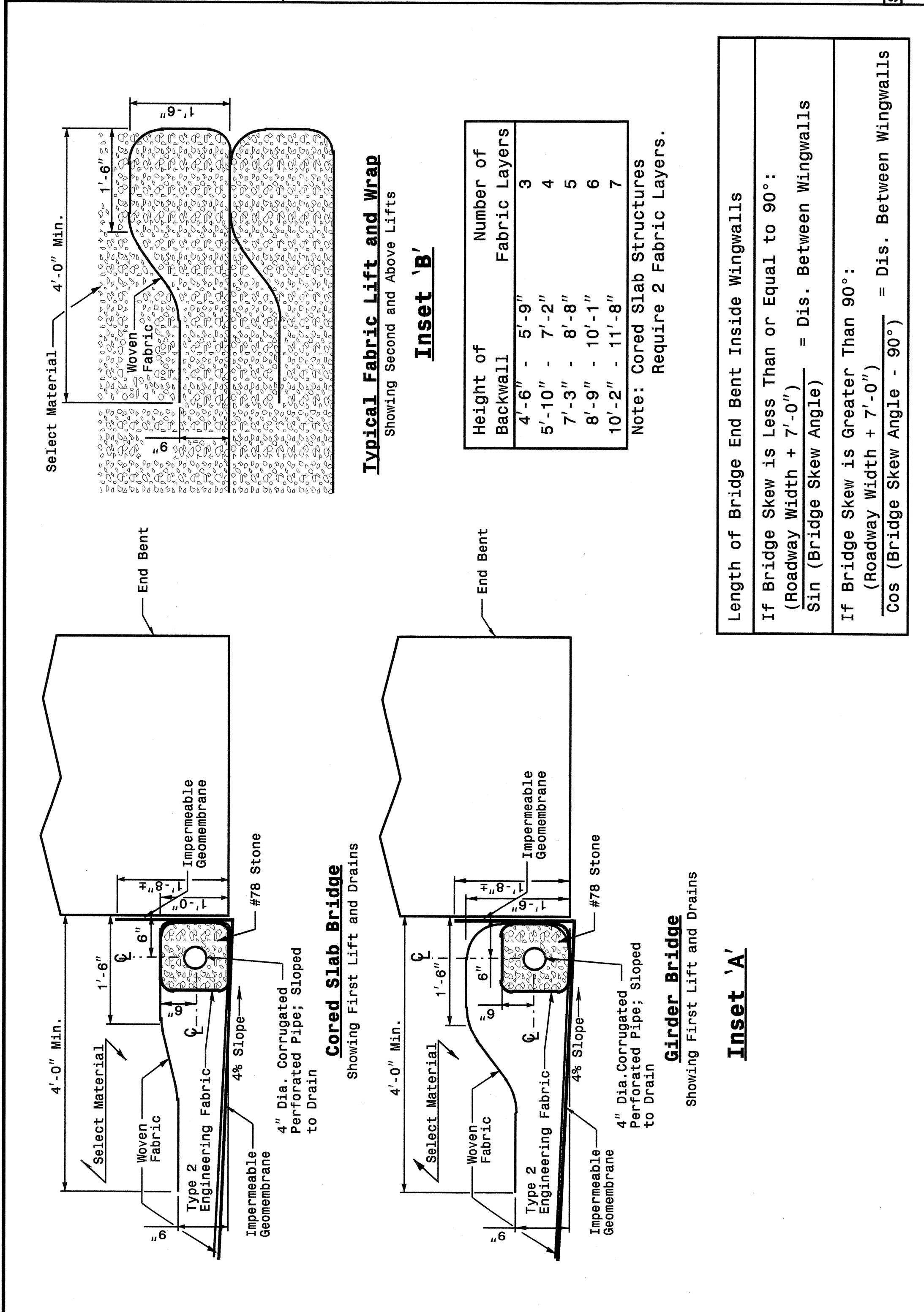
ENGLISH DETAIL DRAWING FOR REINFORCED BRIDGE APPROACH FILLS CORED SLAB BRIDGES

SHEET 3 OF 4 422D10

STATE OF NORTH CAROLINA DEPT. OF TRANSPORTATION DIVISION OF HIGHWAYS RALEIGH, N.C.

ENGLISH DETAIL DRAWING FOR REINFORCED BRIDGE APPROACH FILLS INSETS AND CHARTS

SHEET 4 OF 4 422D10



STATE OF NORTH CAROLINA DEPT. OF TRANSPORTATION DIVISION OF HIGHWAYS RALEIGH, N.C.

ENGLISH DETAIL DRAWING FOR REINFORCED BRIDGE APPROACH FILLS INSETS AND CHARTS

SHEET 4 OF 4 422D10

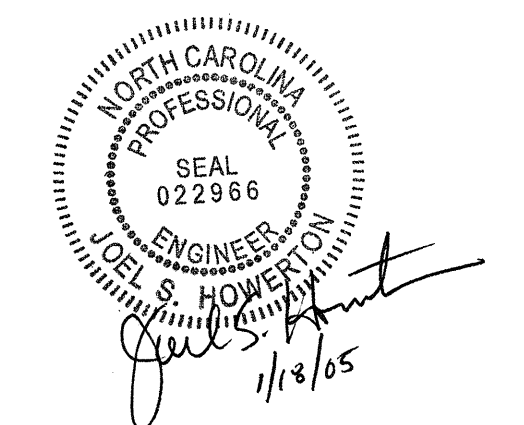
Length of Bridge End Bent Inside Wingwalls

If Bridge Skew is Less Than or Equal to 90°:

$$\frac{(\text{Roadway Width} + 7'-0")}{\sin(\text{Bridge Skew Angle})} = \text{Dis. Between Wingwalls}$$

If Bridge Skew is Greater Than 90°:

$$\frac{(\text{Roadway Width} + 7'-0")}{\cos(\text{Bridge Skew Angle} - 90^\circ)} = \text{Dis. Between Wingwalls}$$



PROJECT SERVICES UNIT
STANDARDS AND SPECIAL DESIGN
Office 919-250-4128 FAX 919-250-4119

SEE PLATE FOR TITLE

ORIGINAL BY: 2002 STANDARDS DATE: 01-15-02
 MODIFIED BY: E.E. WARD DATE: 11-04-04
 CHECKED BY: *Joel S. Howerton* DATE: 11-12-04
 FILE SPEC.: stds/02stdstodetails/english/422d10.dgn

05-NOV-2004 14:23
 C:\Special Details\stds\stds\02\stds to Special Details/english\422d10_0422d10.dgn
 erlward 11/05/04