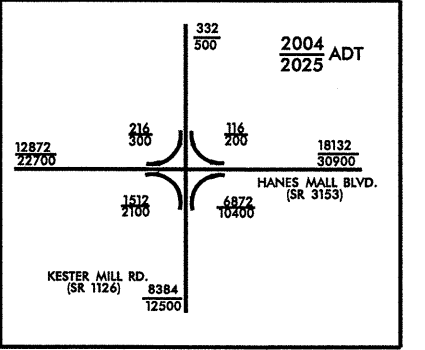


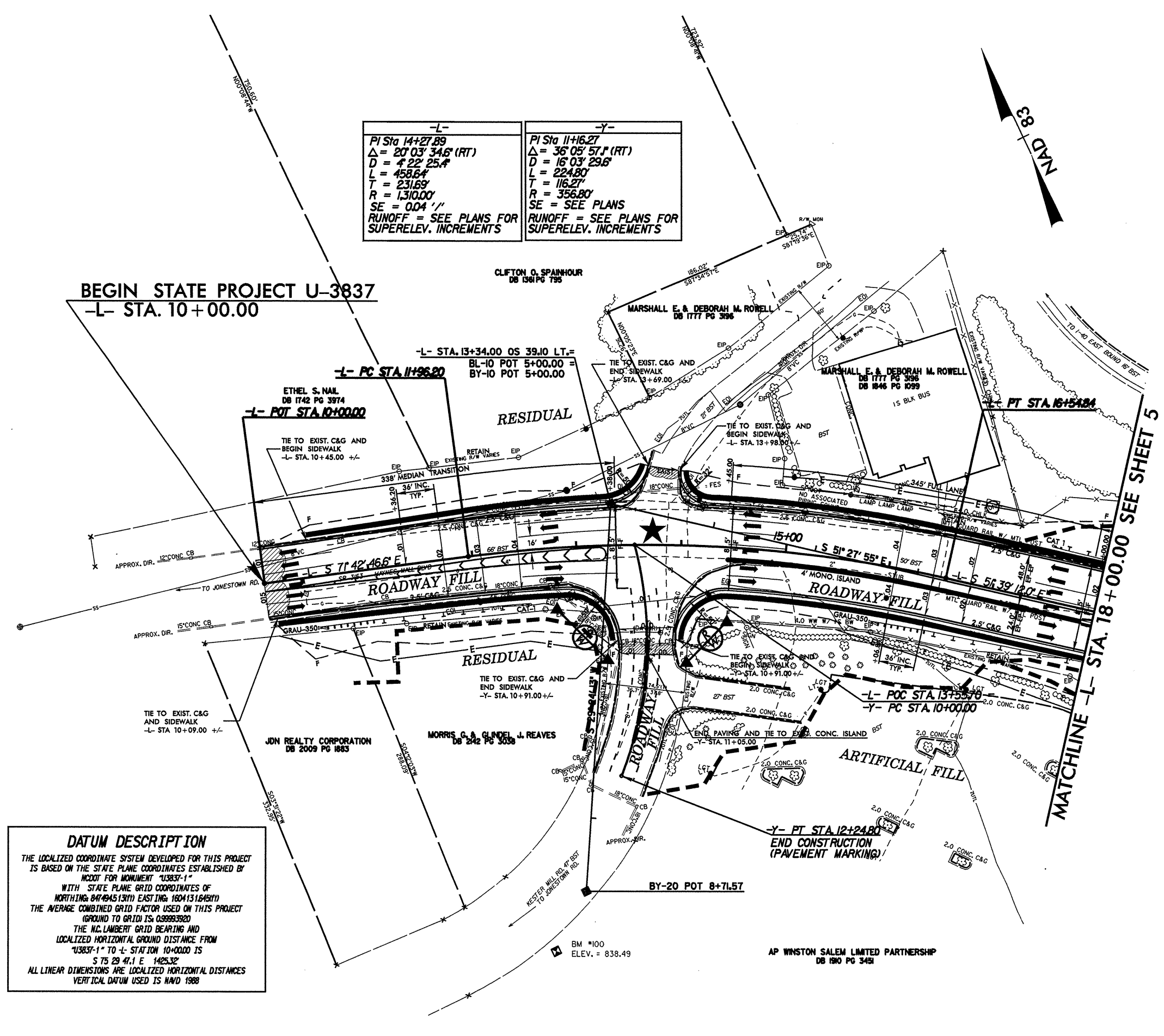
PROJECT REFERENCE NO. U-3837	SHEET NO. 4
R/W SHEET NO.	
ROADWAY DESIGN ENGINEER	HYDRAULICS ENGINEER
INCOMPLETE PLANS DO NOT USE FOR R/W ACQUISITION PRELIMINARY PLANS DO NOT USE FOR CONSTRUCTION	



-L-	-Y-
PI Sta 14+27.89 $\Delta = 20^{\circ} 03' 34.6''$ (RT) $D = 422' 25.4''$ $L = 458.64'$ $T = 231.69'$ $R = 1,310.00'$ $SE = 0.04' / 1'$ RUNOFF = SEE PLANS FOR SUPERELEV. INCREMENTS	PI Sta 11+16.27 $\Delta = 36^{\circ} 05' 57.1''$ (RT) $D = 16^{\circ} 03' 29.6''$ $L = 224.80'$ $T = 116.27'$ $R = 356.80'$ $SE = SEE PLANS$ RUNOFF = SEE PLANS FOR SUPERELEV. INCREMENTS

BEGIN STATE PROJECT U-3837
 -L- STA. 10+00.00

DATUM DESCRIPTION
 THE LOCALIZED COORDINATE SYSTEM DEVELOPED FOR THIS PROJECT IS BASED ON THE STATE PLANE COORDINATES ESTABLISHED BY NCDDOT FOR MONUMENT "U3837-1" WITH STATE PLANE GRID COORDINATES OF NORTHING: 8474945.13(11) EASTING: 16041316.5(11) THE AVERAGE COMBINED GRID FACTOR USED ON THIS PROJECT (GROUND TO GRID) IS 0.99993920 THE N.C. LAMBERT GRID BEARING AND LOCALIZED HORIZONTAL GROUND DISTANCE FROM "U3837-1" TO -L- STATION 10+00.00 IS S 75 29 47.1 E 1425.32' ALL LINEAR DIMENSIONS ARE LOCALIZED HORIZONTAL DISTANCES VERTICAL DATUM USED IS NAVD 1988



DENOTES PAINTED ISLAND (SEE PAVEMENT MARKING PLANS)
 SIGNALIZED INTERSECTION
 SEE SHEET 9 FOR -L- PROFILE
 SEE SHEET 12 FOR -Y- PROFILE

REVISIONS

8/17/99

TIME: 09:00 AM
 DATE: 08/17/99
 DRAWN: J. W. WILSON
 CHECKED: J. W. WILSON
 APPROVED: J. W. WILSON
 PROJECT: U-3837-1
 SHEET: 4 OF 4