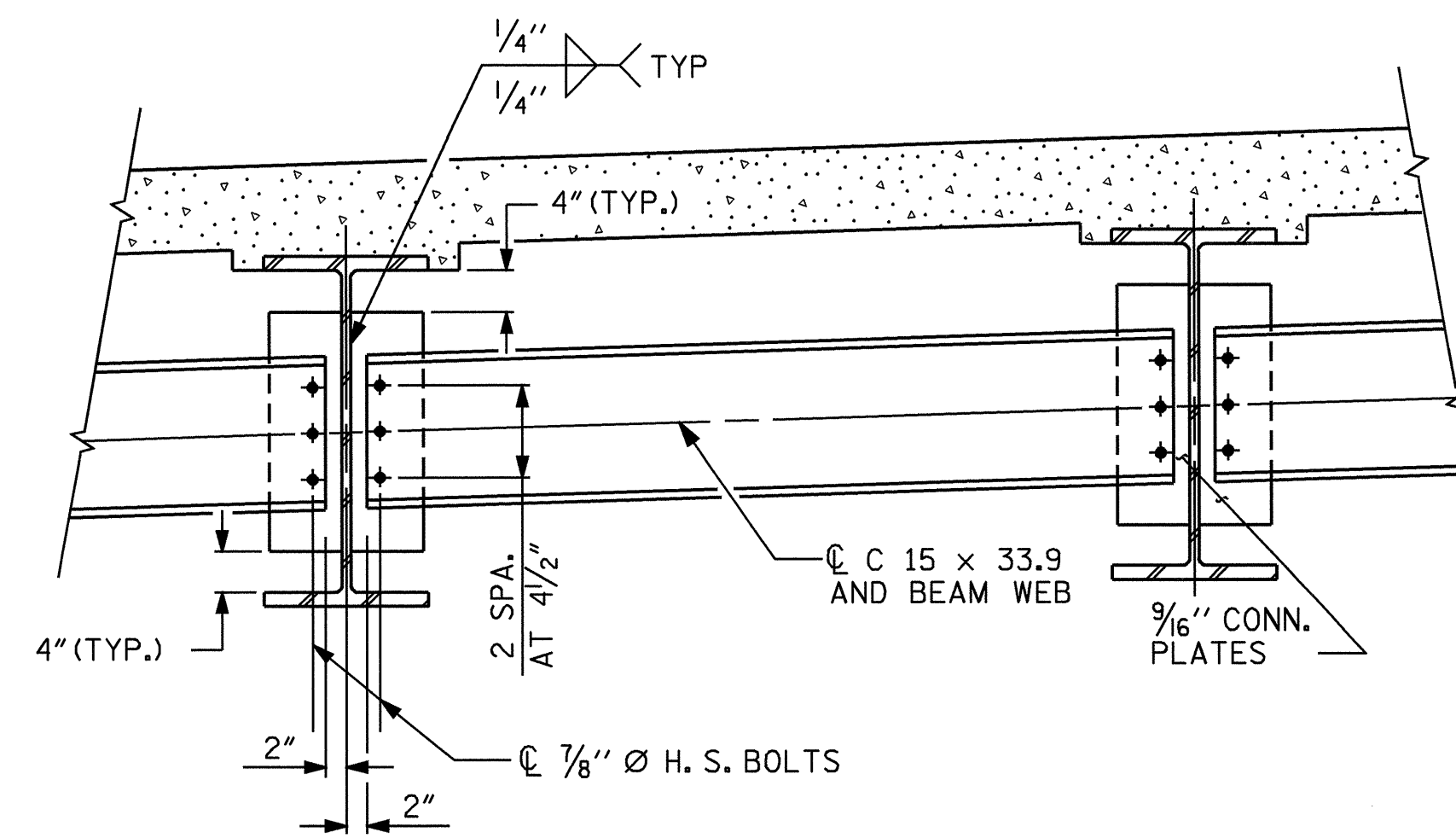
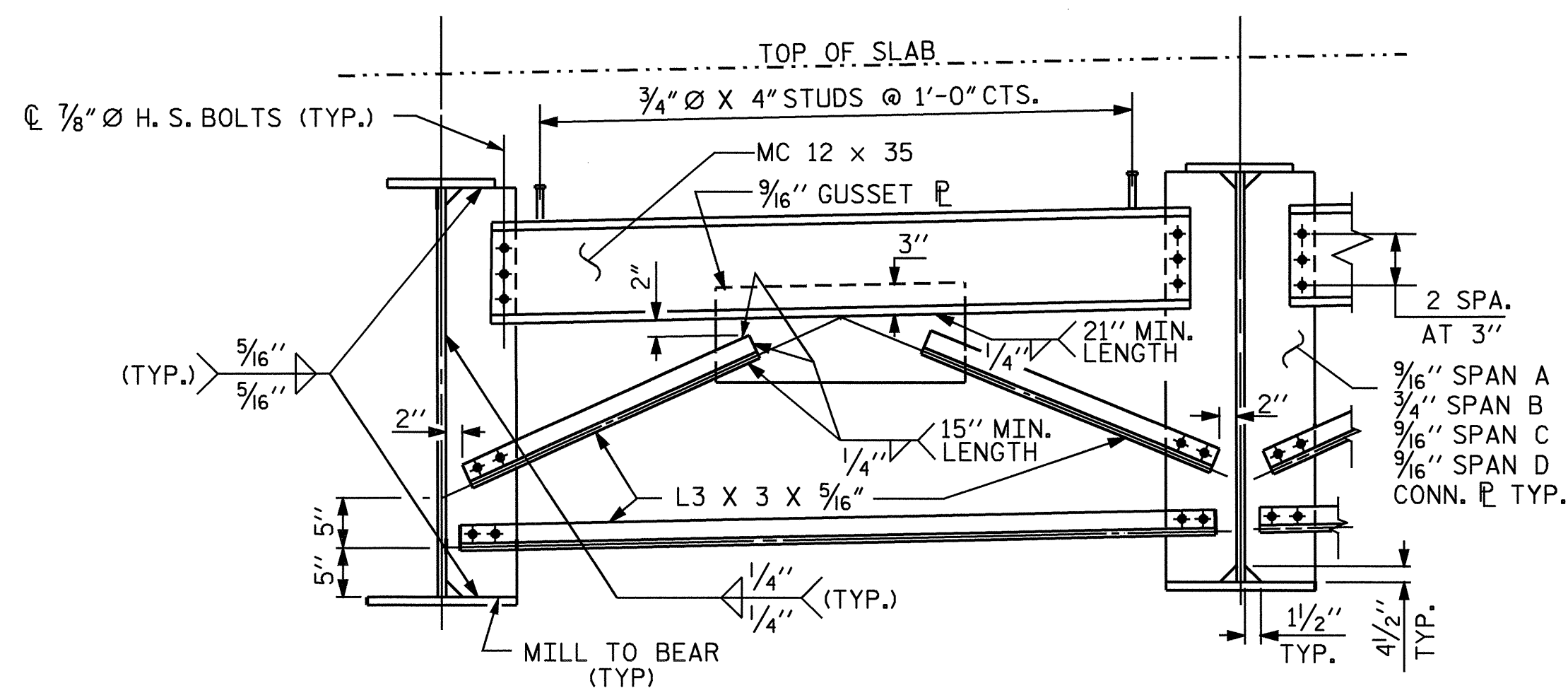


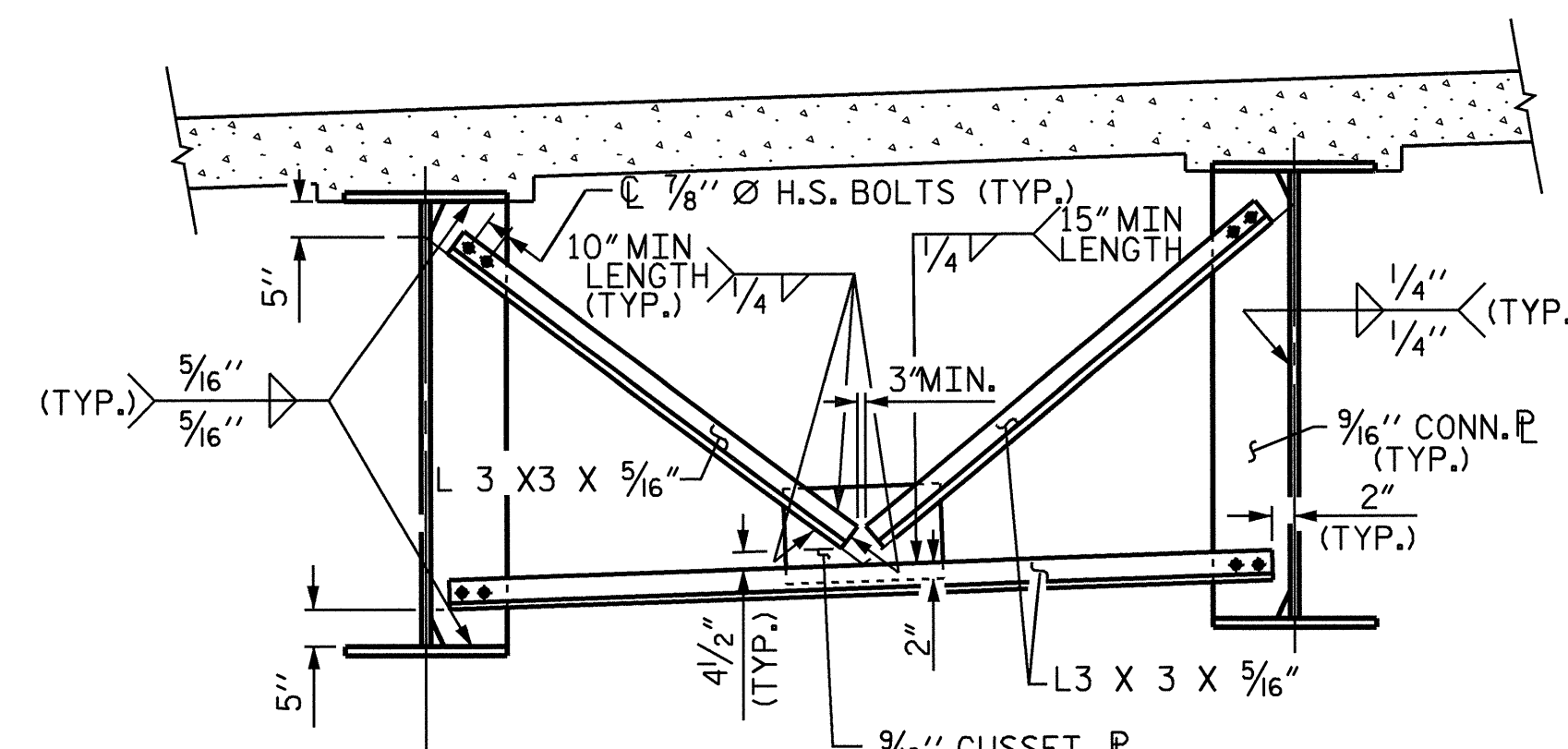
TYPICAL END BENT DIAPHRAGM (D1)



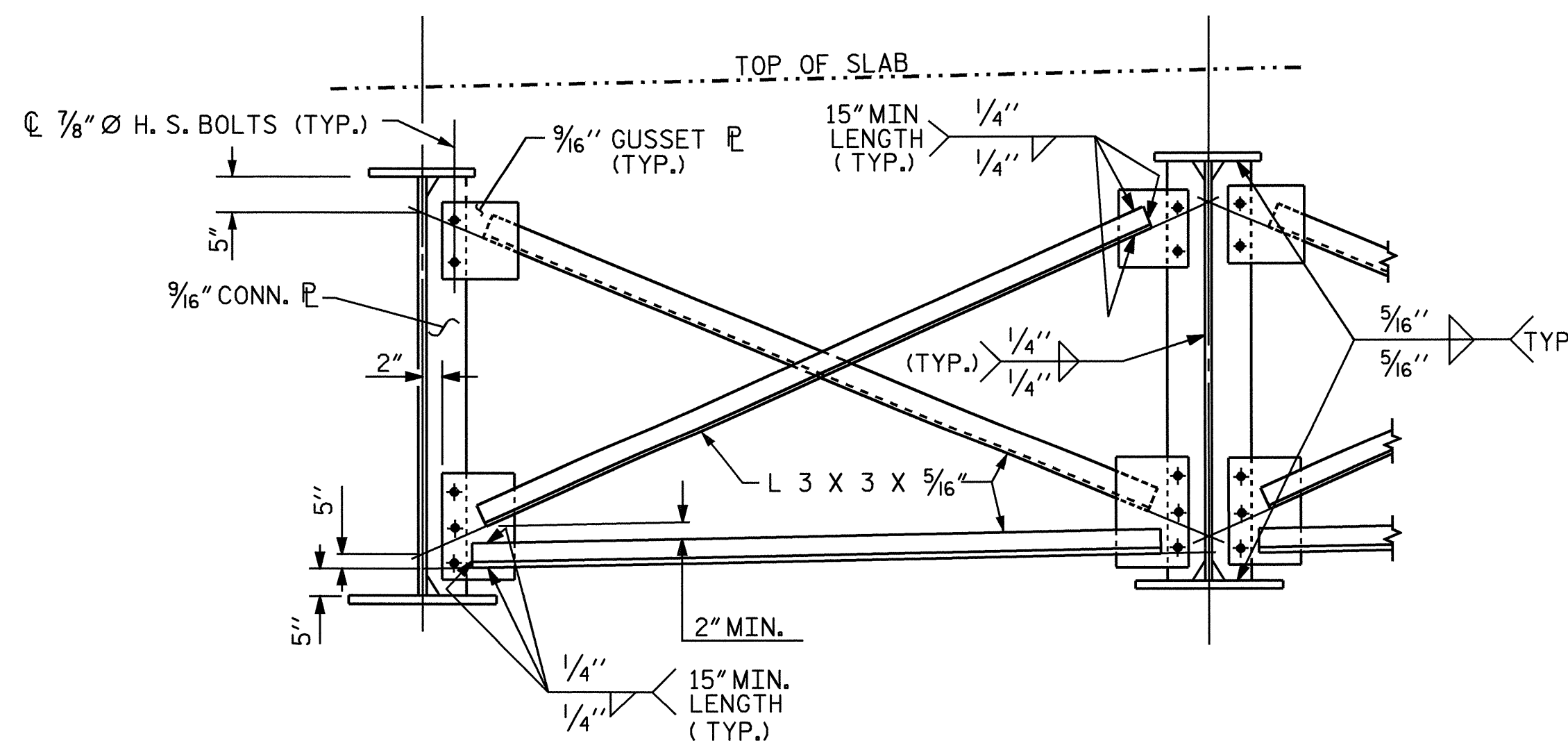
TYPICAL INTERMEDIATE DIAPHRAGM (D2) FOR SPANS A & D



TYPICAL BENT DIAPHRAGM (D3)



TYPICAL INTERMEDIATE DIAPHRAGM (D4) FOR SPANS B & C



TYPICAL OPTIONAL INTERMEDIATE CROSSFRAME DIAPHRAGM (D4) FOR SPANS B & C

DRAWN BY : *William J. Parker* DATE : 02/03/04  
 CHECKED BY : *K. K. PUROHIT* DATE : 5/25/04

07-JAN-2005 15:24  
 W:\squadg\TURNED\U3837\FINAL\ASTRI\U3837\_sd\_ss\_01.dgn  
 kaiford

PROJECT NO. U-3837  
 FORSYTH COUNTY  
 STATION: 21+64.07 -L-

SHEET 5 OF 6

STATE OF NORTH CAROLINA  
 DEPARTMENT OF TRANSPORTATION  
 RALEIGH  
 SUPERSTRUCTURE  
 STRUCTURAL STEEL  
 DETAILS

(LEFT LANE WIDENING)

REVISIONS						SHEET NO.
NO.	BY:	DATE:	NO.	BY:	DATE:	S-14
1			3			TOTAL SHEETS
2			4			78

