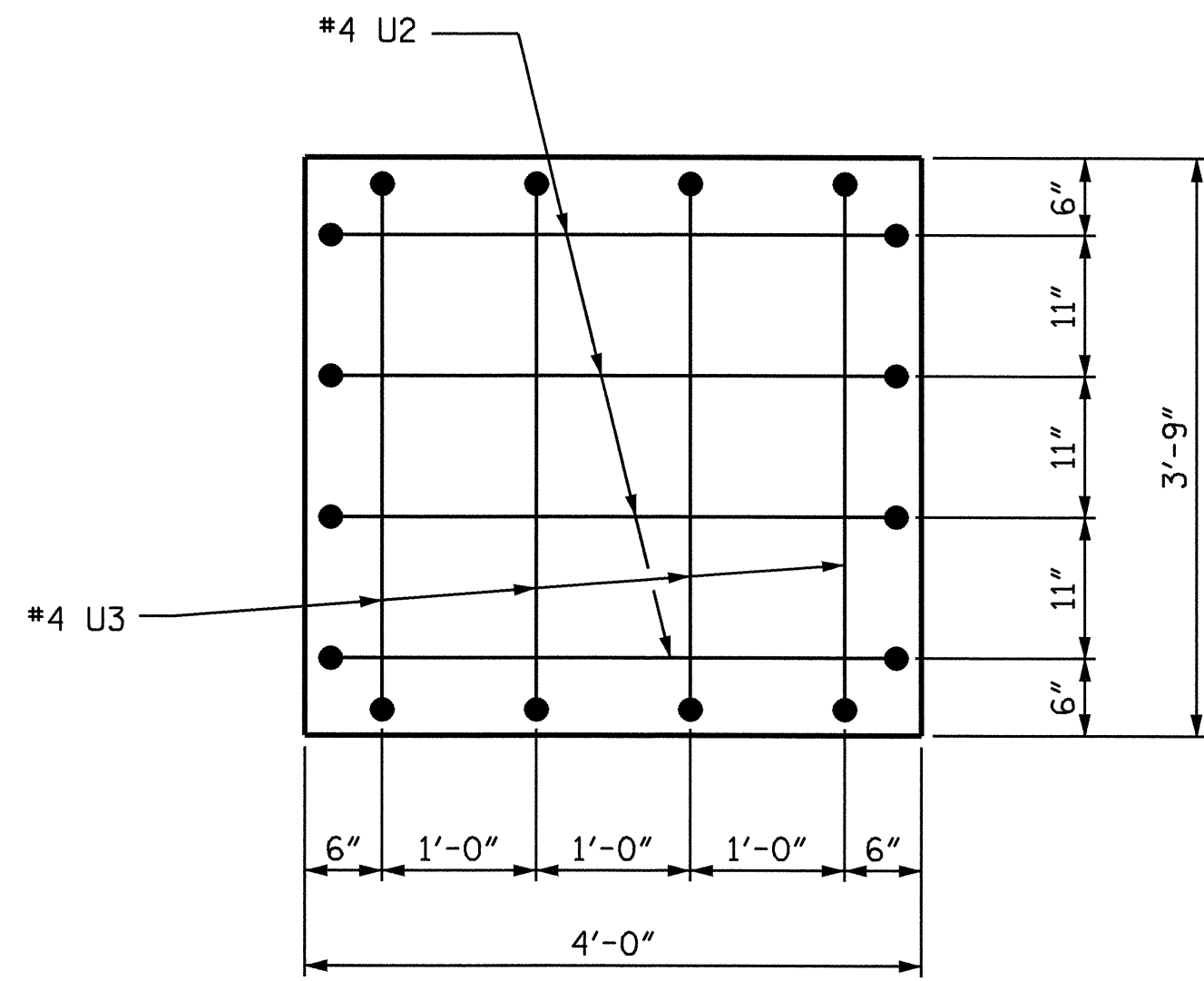
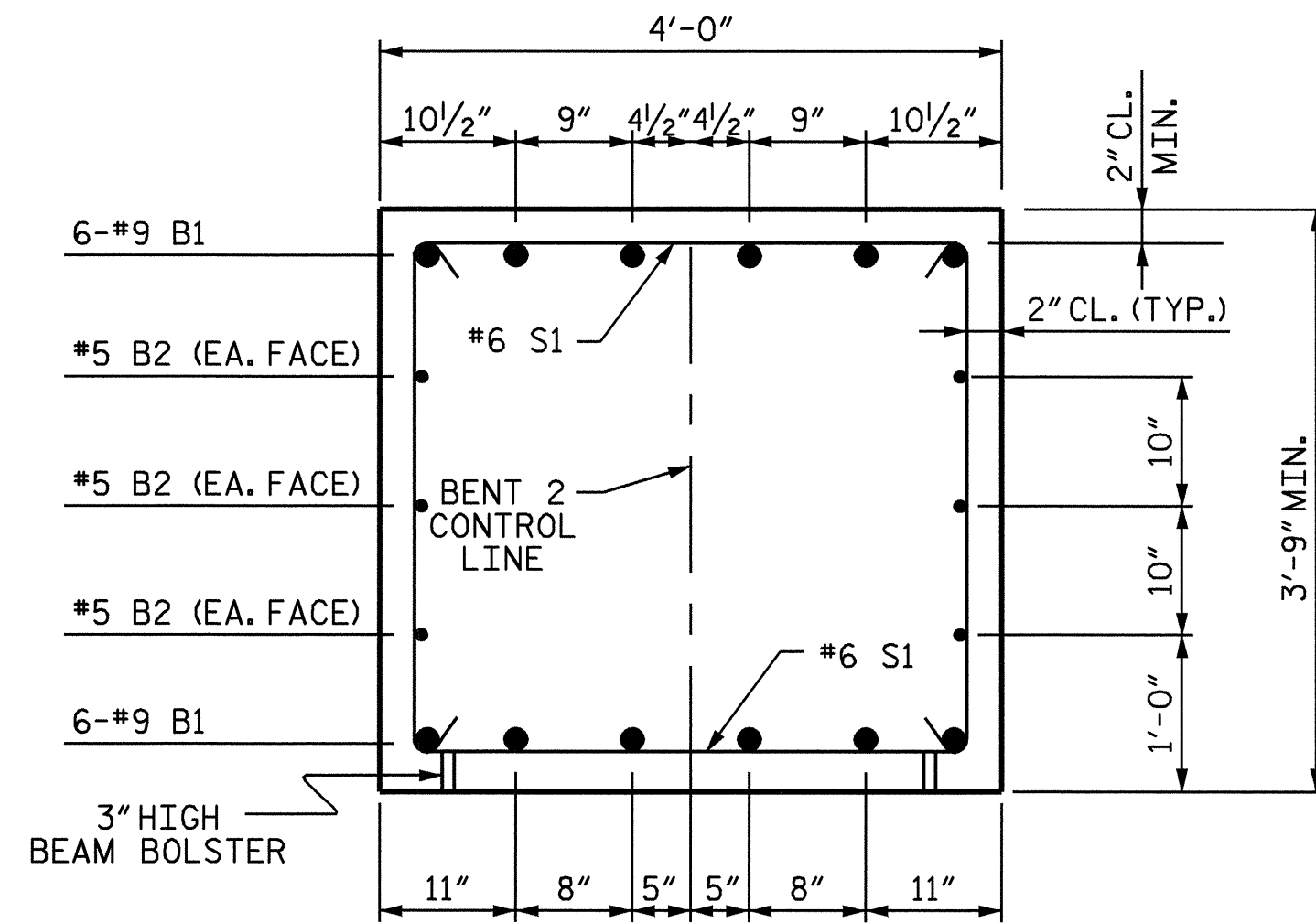


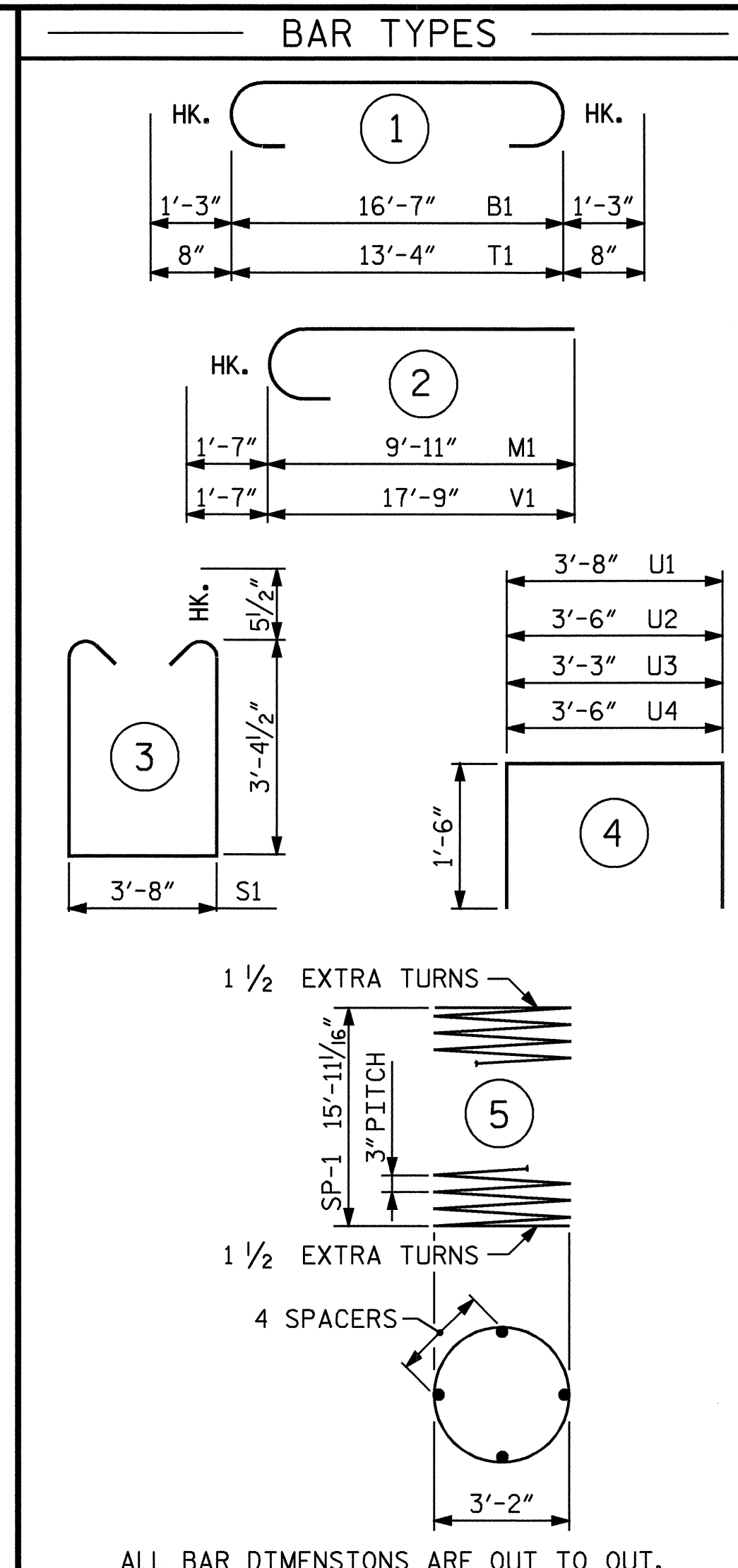
VIEW X-X



VIEW Y-Y



SECTION A-A

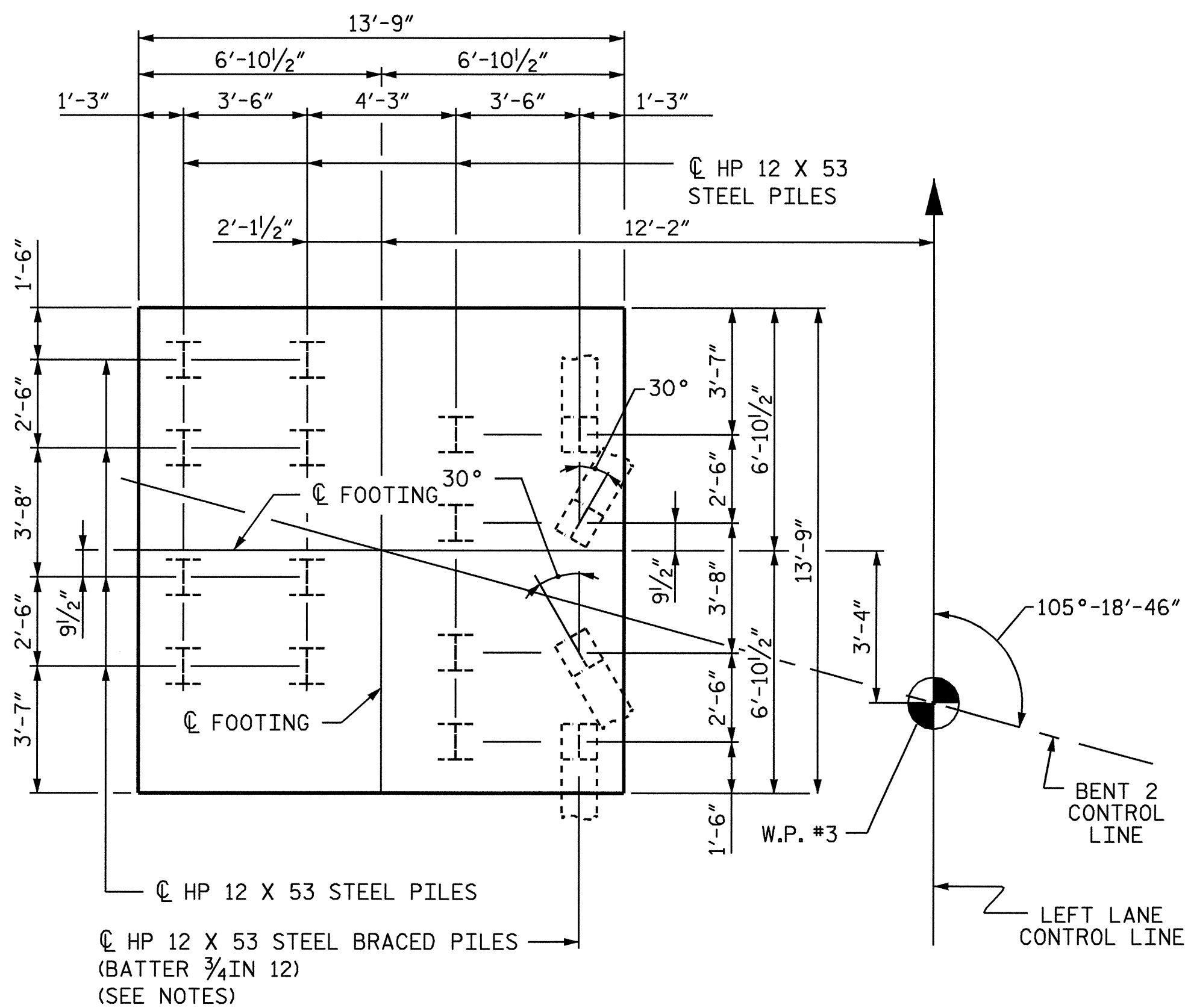


ALL BAR DIMENSIONS ARE OUT TO OUT.

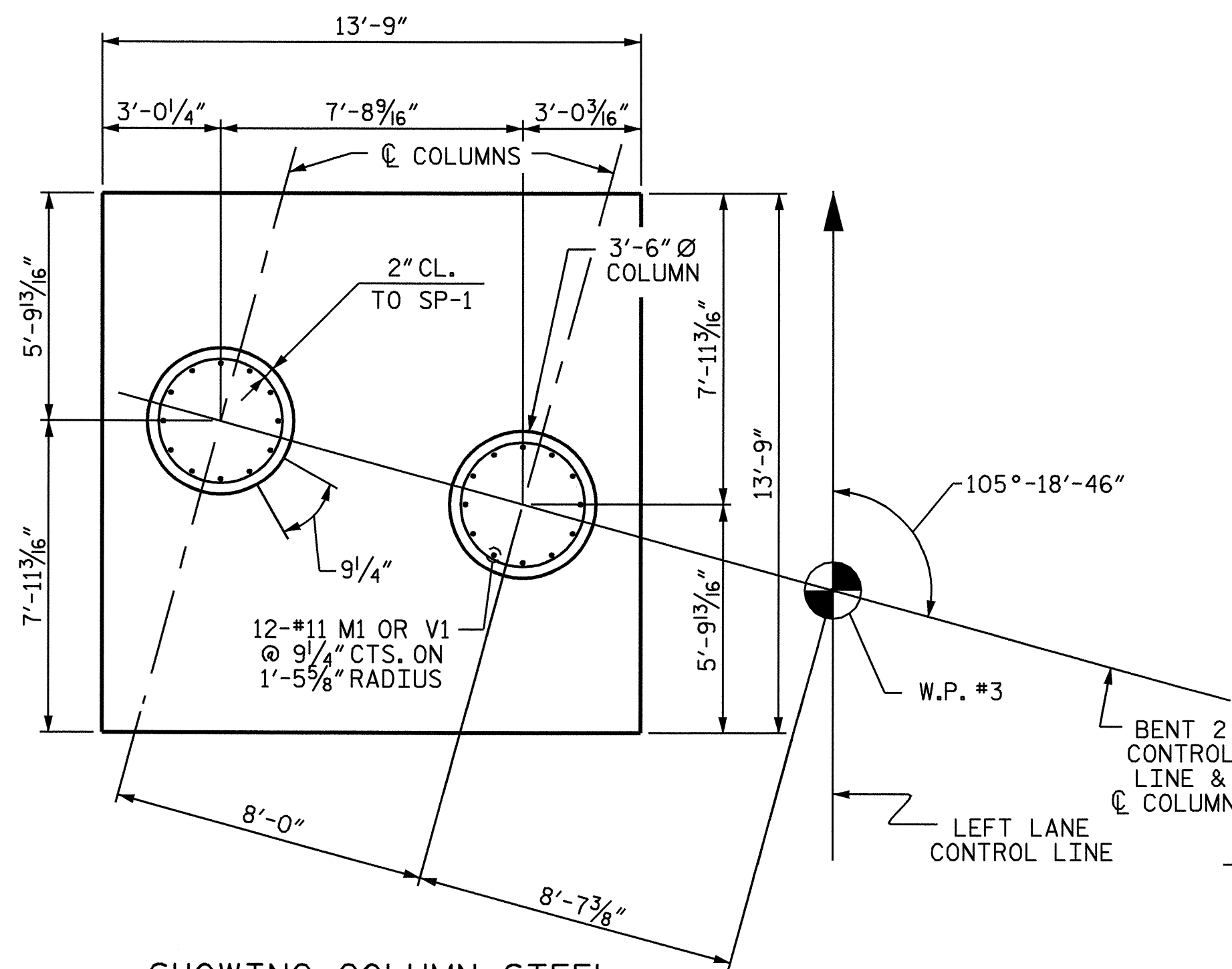
** THE SP-1 SPIRAL REINFORCING STEEL SHALL BE W20 OR D-20 COLD DRAWN WIRE OR #4 PLAIN OR DEFORMED BAR.

BILL OF MATERIAL					
BENT 2					
BAR	NO.	SIZE	TYPE	LENGTH	WEIGHT
B1	12	#9	1	19'-1"	779
B2	6	#5	STR	16'-8"	104
B3	6	#4	STR	3'-4"	13
M1	24	#11	2	11'-6"	1466
S1	18	#6	3	11'-4"	306
T1	65	#6	1	14'-8"	1432
U1	19	#4	4	6'-8"	85
U2	8	#4	4	6'-6"	34
U3	4	#4	4	6'-3"	17
U4	4	#4	4	6'-6"	17
V1	24	#11	2	19'-4"	2465
REINFORCING STEEL				=	6718 LBS
SP-1	2	**	5	658'-0"	879
SPIRAL REINFORCING STEEL				=	879 LBS
CLASS A CONCRETE					
POUR #1 (FOOTING)					24.5
POUR #2 (COLUMNS)					11.2
POUR #3 (CAP)					9.7
TOTAL				C.Y.	45.4
HP 12 X 53 STEEL PILES					
NO. 16				FEET	880
FOUNDATION EXCAVATION					
				LUMP SUM	

SPAN C

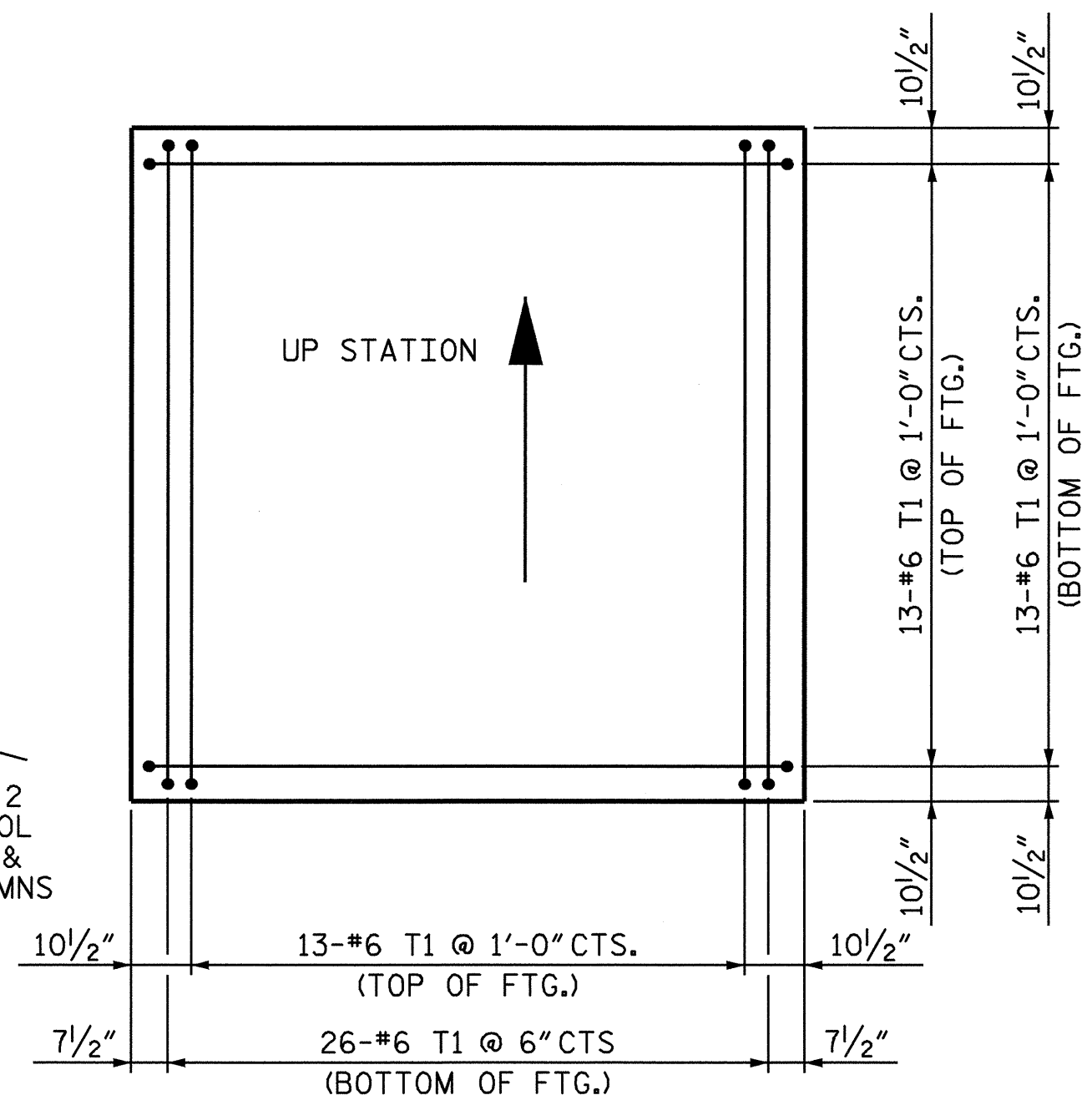


SPAN B
SHOWING PILES IN FOOTING

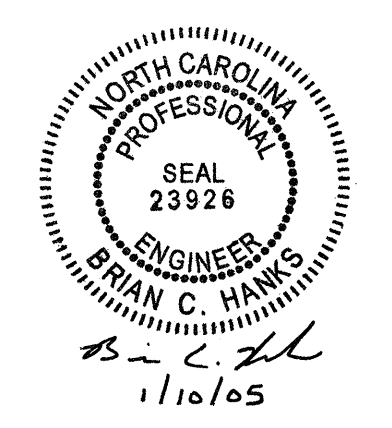


SHOWING COLUMN STEEL
DIMENSIONS AND REINFORCING STEEL
ARE TYPICAL FOR ALL COLUMNS

PLAN OF COLUMNS AND FOOTING



SHOWING PLAN OF FOOTING REINFORCING STEEL



PROJECT NO. U-3837
 FORSYTH COUNTY
 STATION: 21+64.07 -L-

SHEET 2 OF 2

STATE OF NORTH CAROLINA
 DEPARTMENT OF TRANSPORTATION
 RALEIGH

SUBSTRUCTURE
 BENT 2

REVISIONS					
NO.	BY:	DATE:	NO.	BY:	DATE:
1			3		
2			4		

SHEET NO.	
S-34	TOTAL SHEETS 78

DRAWN BY : D. G. ELY DATE : 06/04/04
 CHECKED BY : W. F. PARKER DATE : 07/14/04

07-JAN-2005 15:05
 W:\squadg\TURNED\U3837\FINAL\STR\U3837_sd.bl.01.dgn
 kaiford

STR. #1