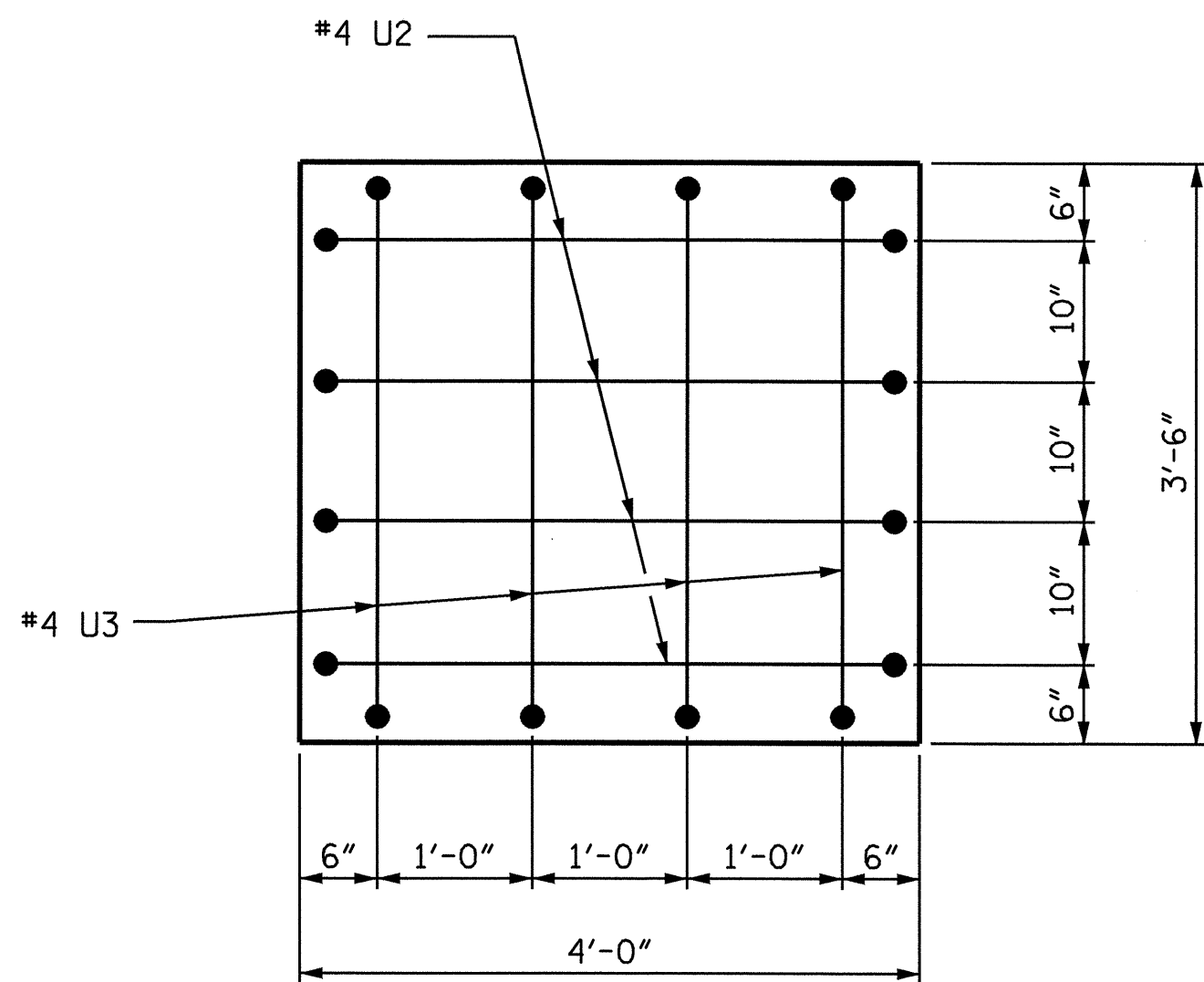
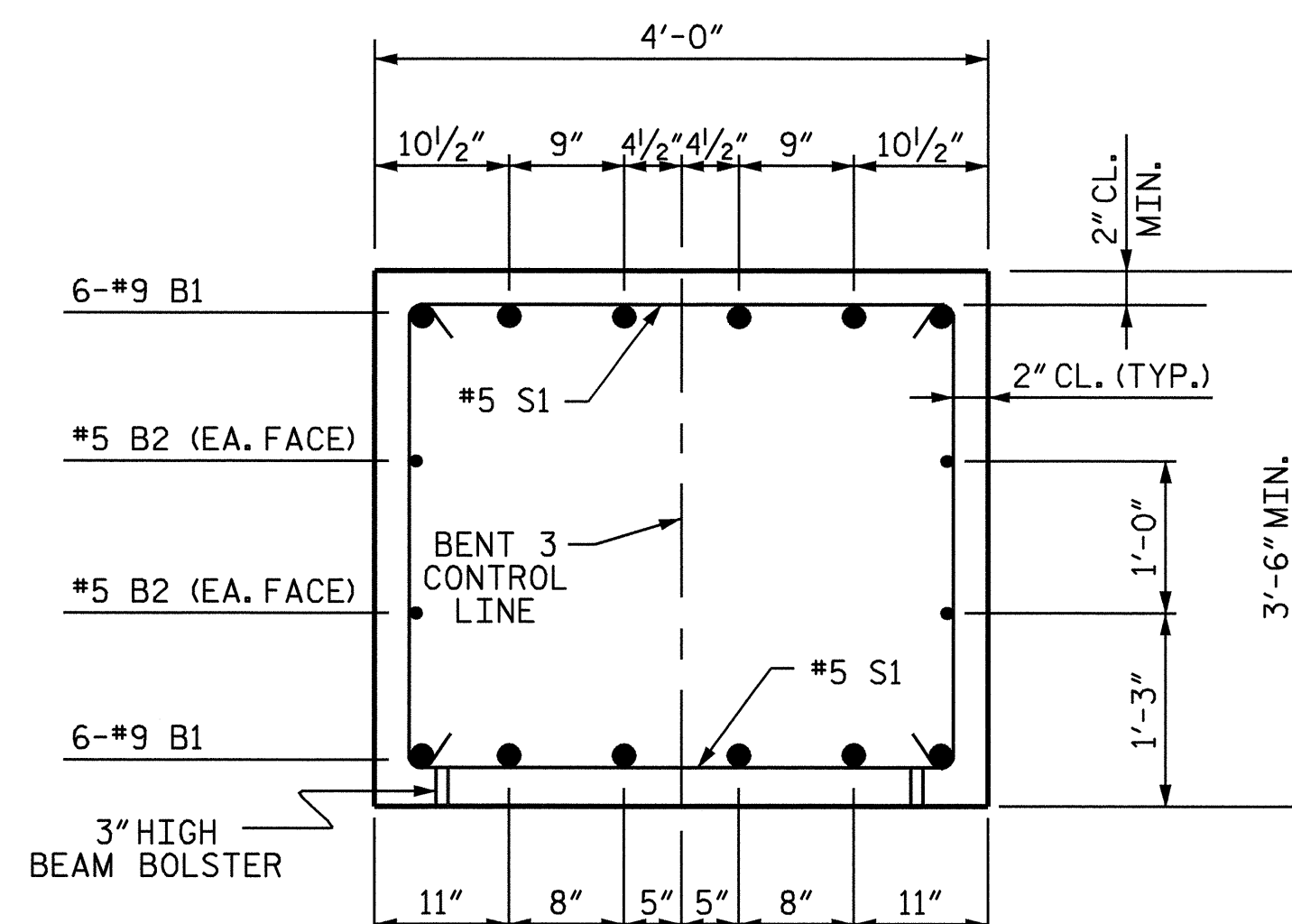


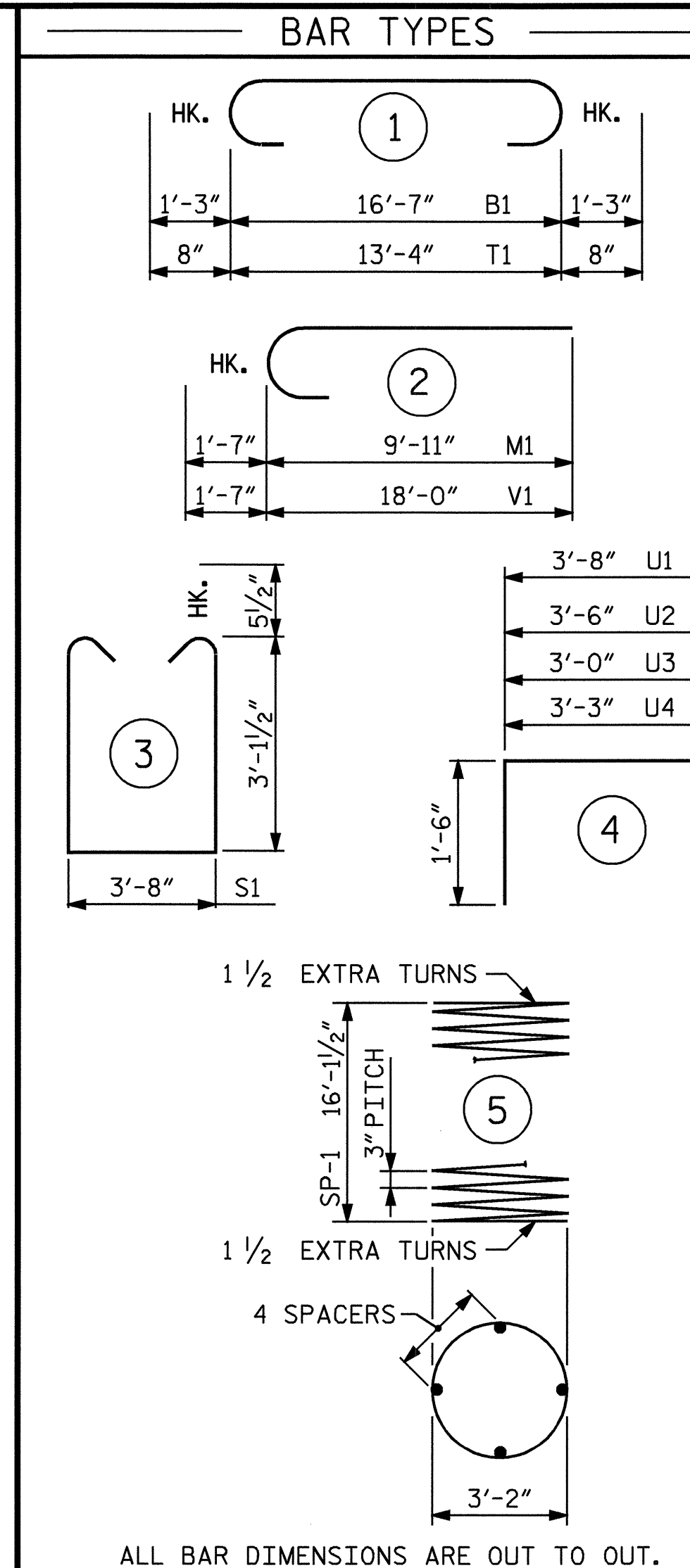
VIEW X-X



VIEW Y-Y



SECTION A-A

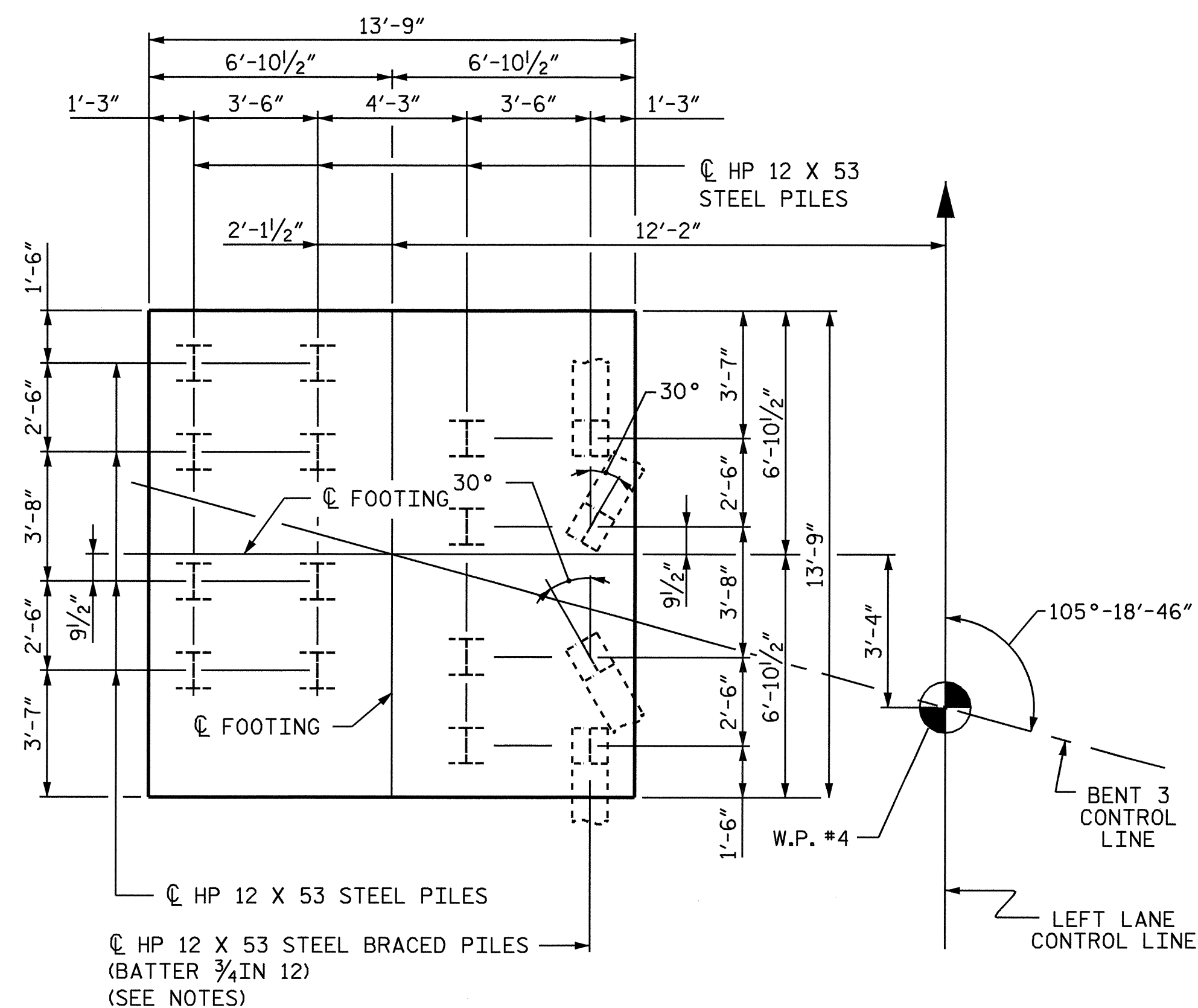


ALL BAR DIMENSIONS ARE OUT TO OUT.

\*\* THE SP-1 SPIRAL REINFORCING STEEL SHALL BE W20 OR D-20 COLD DRAWN WIRE OR #4 PLAIN OR DEFORMED BAR.

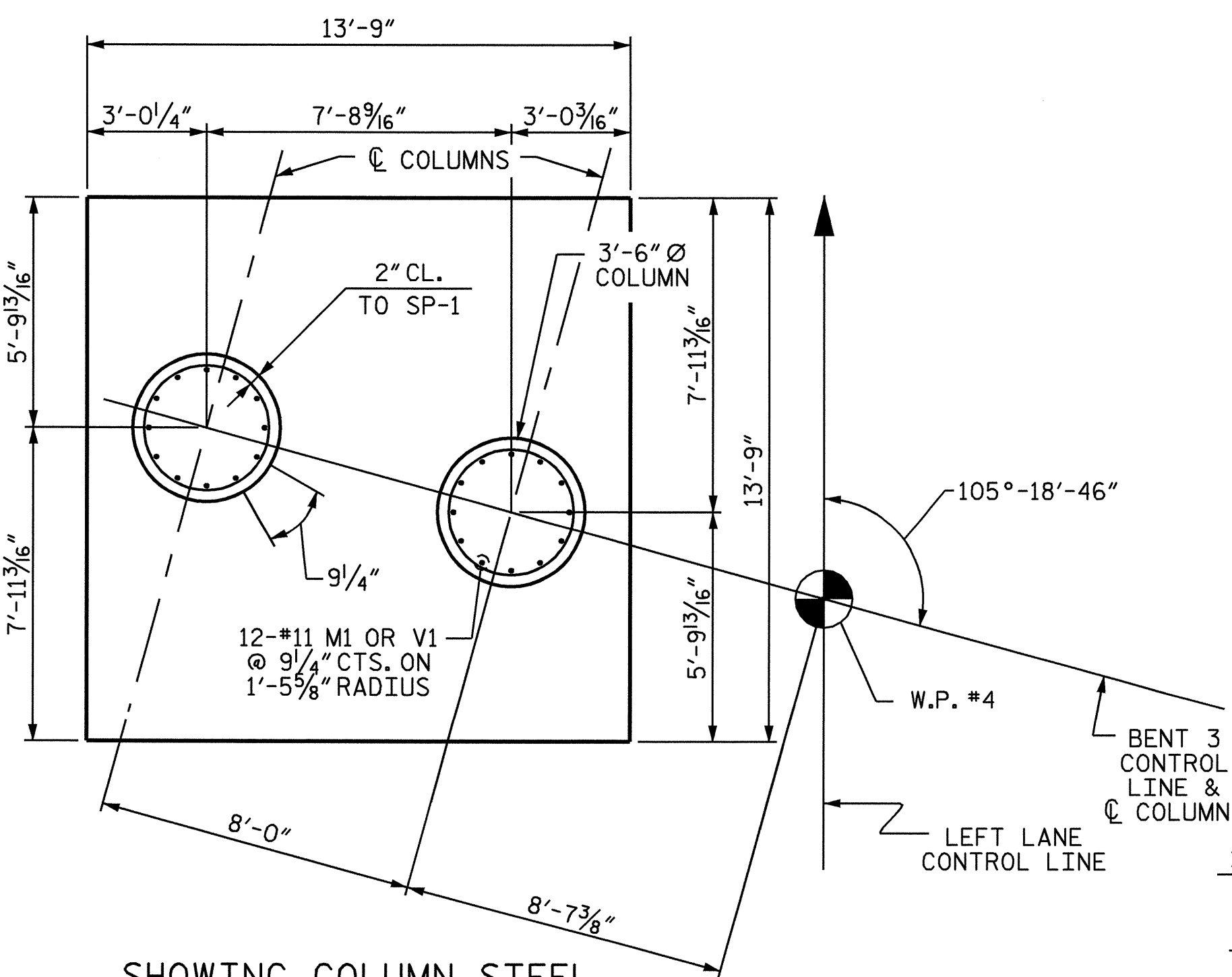
BILL OF MATERIAL					
BENT 3					
BAR	NO.	SIZE	TYPE	LENGTH	WEIGHT
B1	12	#9	1	19'-1"	779
B2	4	#5	STR	16'-8"	70
B3	6	#4	STR	3'-4"	13
M1	24	#11	2	11'-6"	1466
S1	17	#5	3	10'-10"	192
T1	65	#6	1	14'-8"	1432
U1	19	#4	4	6'-8"	85
U2	8	#4	4	6'-6"	34
U3	4	#4	4	6'-0"	16
U4	4	#4	4	6'-3"	17
V1	24	#11	2	19'-7"	2497
REINFORCING STEEL					= 6602 LBS
SP-1	2	**	5	667'-10"	892
SPIRAL REINFORCING STEEL					= 892 LBS
CLASS A CONCRETE					
POUR #1 (FOOTING)					24.5
POUR #2 (COLUMNS)					11.3
POUR #3 (CAP)					9.1
TOTAL					C.Y. 44.9
HP 12 X 53 STEEL PILES					
NO. 16			FEET	720	
FOUNDATION EXCAVATION					LUMP SUM

SPAN D



SPAN C

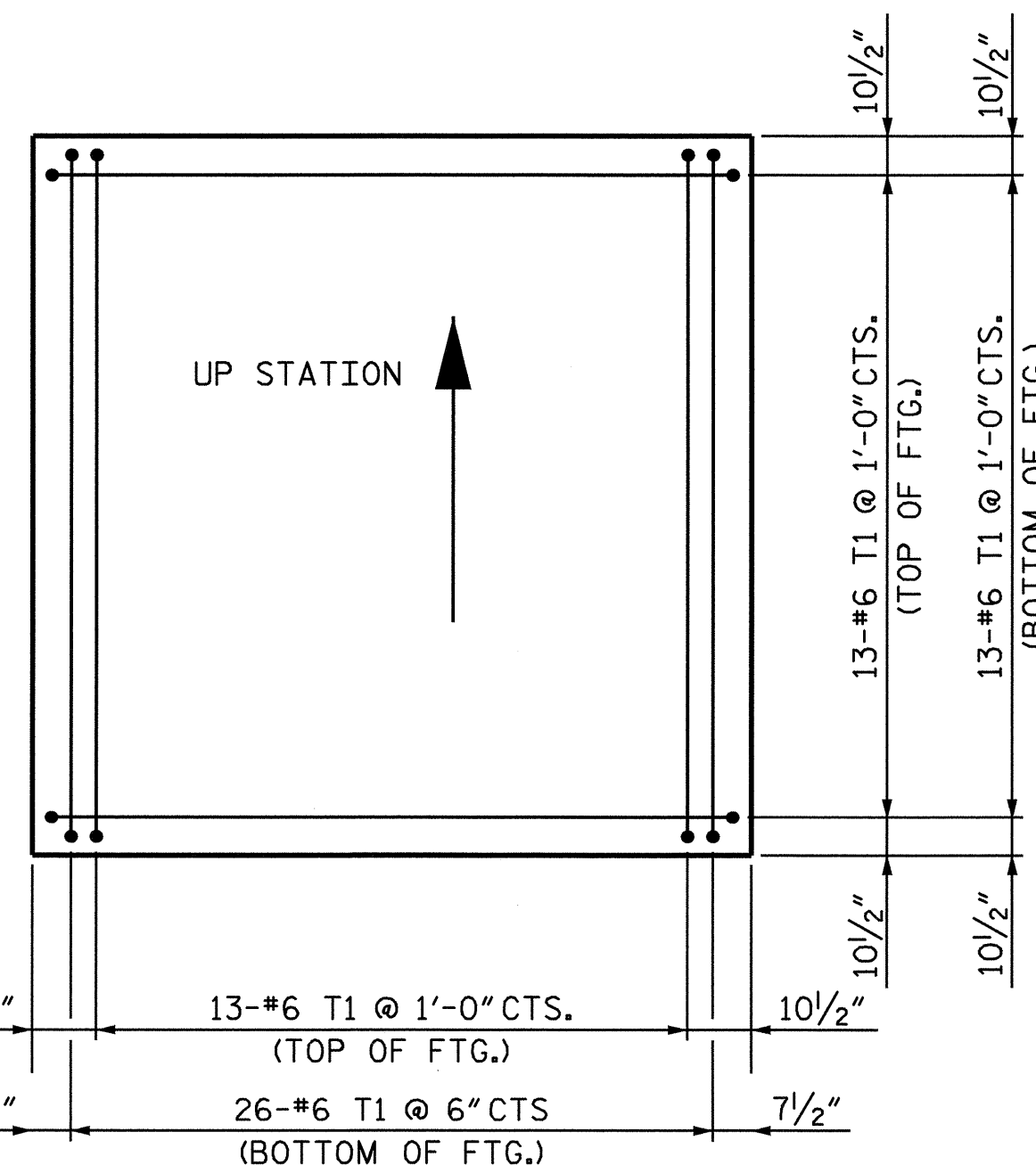
SHOWING PILES IN FOOTING



SHOWING COLUMN STEEL

DIMENSIONS AND REINFORCING STEEL ARE TYPICAL FOR ALL COLUMNS

PLAN OF COLUMNS AND FOOTING



SHOWING PLAN OF FOOTING REINFORCING STEEL



PROJECT NO. U-3837  
 FORSYTH COUNTY  
 STATION: 21+64.07 -L-

SHEET 2 OF 2

STATE OF NORTH CAROLINA  
 DEPARTMENT OF TRANSPORTATION  
 RALEIGH

SUBSTRUCTURE  
 BENT 3

DRAWN BY : D. G. ELY DATE : 06/04/04  
 CHECKED BY : W. F. PARKER DATE : 07/14/04

07-JAN-2005 15:05  
 W:\squadg\TURNED\U3837\FINAL\STR\U3837\_sd.bl.01.dgn  
 Kalford

REVISIONS					
NO.	BY:	DATE:	NO.	BY:	DATE:
1			3		
2			4		

SHEET NO. S-36

TOTAL SHEETS 78

STR. #1