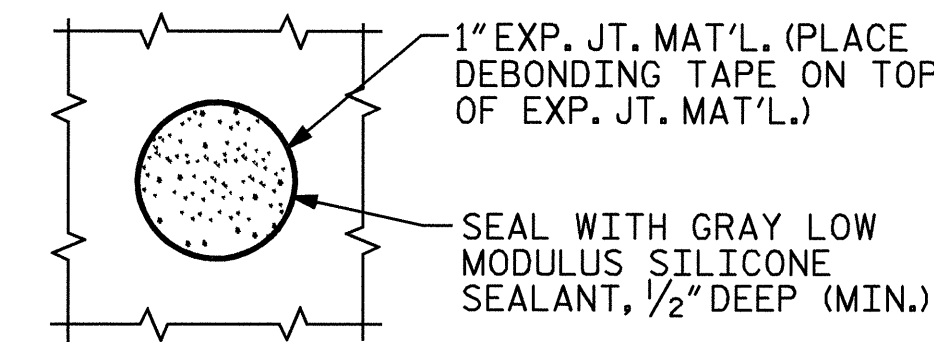
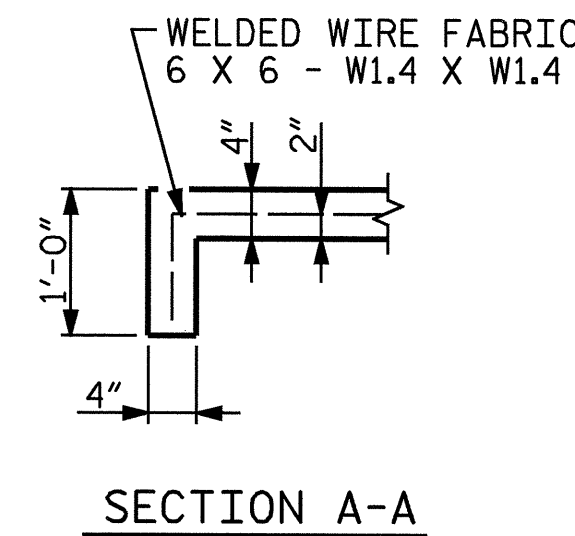
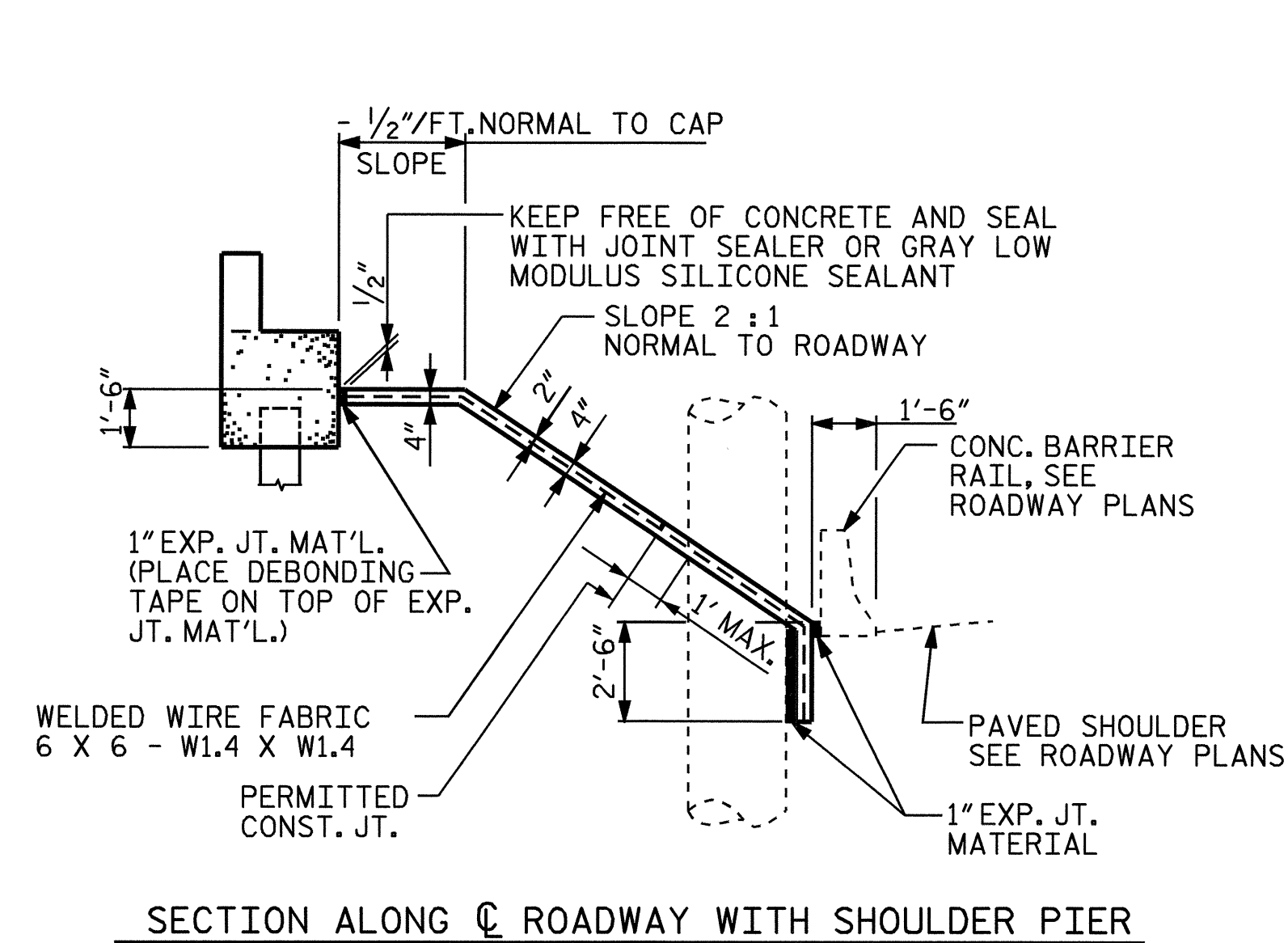


NOTES

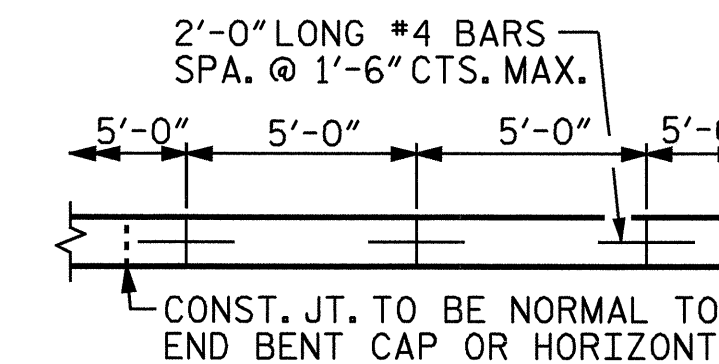
SLOPE PROTECTION SHALL BE PLACED UNDER THE ENDS OF THE BRIDGE AS SHOWN IN THE DETAILS. METHOD OF MEASUREMENT AND BASIS OF PAYMENT SHALL BE AS PRESCRIBED IN SECTION 462 OF THE STANDARD SPECIFICATIONS. FOR BERM WIDTH, SEE GENERAL DRAWING.

SLOPE PROTECTION SHALL CONSIST OF 4" POURED-IN-PLACE CONCRETE PAVING AS SHOWN IN THE DETAILS ON THIS SHEET. CONCRETE SHALL BE CLASS "B". THE CONCRETE SURFACE SHALL BE FLOATED WITH A WOODEN FLOAT AND FINISHED. WELDED WIRE FABRIC REINFORCING SHALL BE 6 X 6 - W1.4 X W1.4, 60" WIDE. SLOPE PROTECTION SHALL BE POURED IN 5' STRIPS AS SHOWN IN THE "POURING DETAIL" WITH 2'-0" LONG #4 BARS PLACED ALONG THE SLOPE BETWEEN STRIPS AT 1'-6" MAXIMUM SPACING. SLOPE PROTECTION MAY BE POURED IN ALTERNATE 4' AND 5' STRIPS AS SHOWN IN THE "OPTIONAL POURING DETAIL" WITH ADJACENT RUNS OF WELDED WIRE FABRIC LAPPING AT LEAST 6". THE COST OF THE WELDED WIRE FABRIC AND #4 BARS, IF USED, SHALL BE INCLUDED IN THE CONTRACT UNIT PRICE BID PER SQUARE YARD FOR SLOPE PROTECTION.

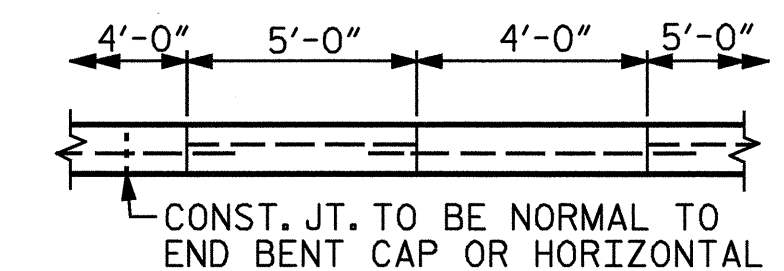
EQUIPMENT, TOOLS, LABOR, MATERIAL, AND ANY INCIDENTALS NEEDED TO REMOVE THE EXISTING STONE SLOPE PROTECTION SHALL BE INCLUDED IN THE CONTRACT UNIT PRICE BID PER SQUARE YARD FOR SLOPE PROTECTION.



PLAN WHERE CONCRETE SLOPE PROTECTION MUST BE PLACED AROUND A BENT COLUMN



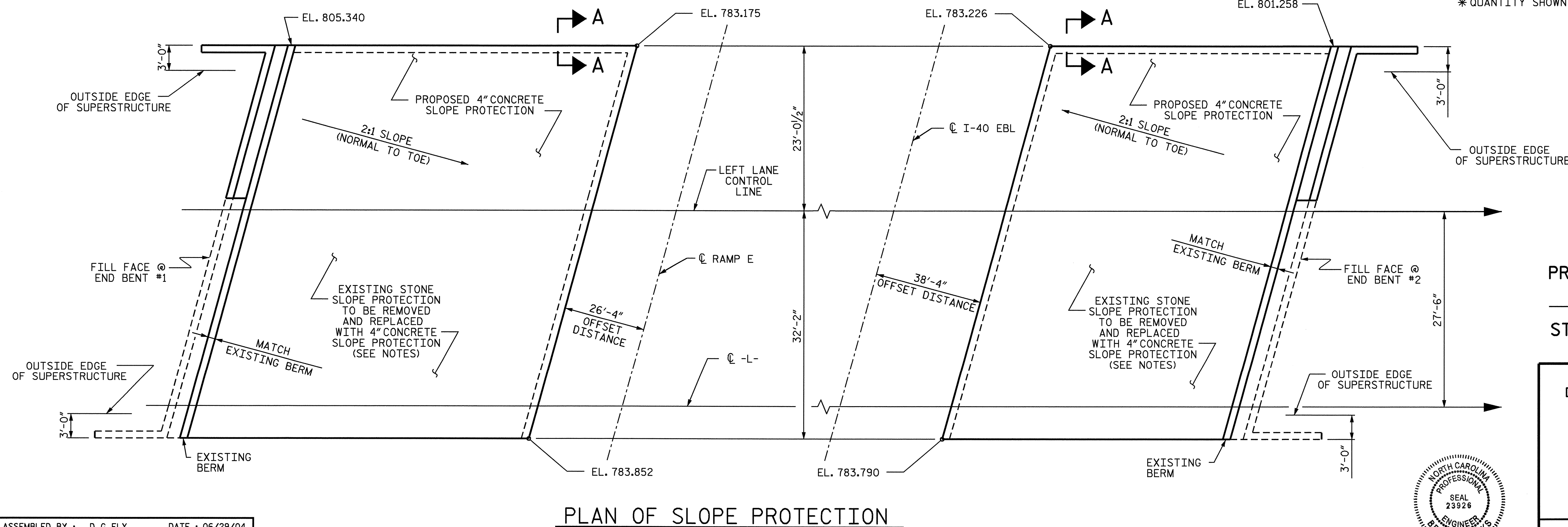
POURING DETAIL



OPTIONAL POURING DETAIL

BRIDGE @ STA. 21+64.07 -L- (LEFT LANE WIDENING)	4 INCH SLOPE PROTECTION	* WELDED WIRE FABRIC 60 INCHES WIDE
	SQUARE YARDS	APPROX. L.F.
END BENT 1	345	625
END BENT 2	290	525

* QUANTITY SHOWN IS BASED ON 5' POURS.



PLAN OF SLOPE PROTECTION

PROJECT NO. U-3837
 FORSYTH COUNTY
 STATION: 21+64.07 -L-

STATE OF NORTH CAROLINA
 DEPARTMENT OF TRANSPORTATION
 RALEIGH

SLOPE PROTECTION
 DETAILS

REVISIONS						SHEET NO.	
NO.	BY:	DATE:	NO.	BY:	DATE:	S-41	
1			3			TOTAL SHEETS 78	
2			4				

ASSEMBLED BY : D. G. ELY DATE : 06/29/04
 CHECKED BY : K. W. ALFORD DATE : 07/29/04
 DRAWN BY : ELR 5/92 LES/RDR
 CHECKED BY : GRP 6/92 REV. 7/10/01 LES/RDR
 REV. 10/17/00 LES/RDR
 REV. 5/7/03 RWW/JTE

