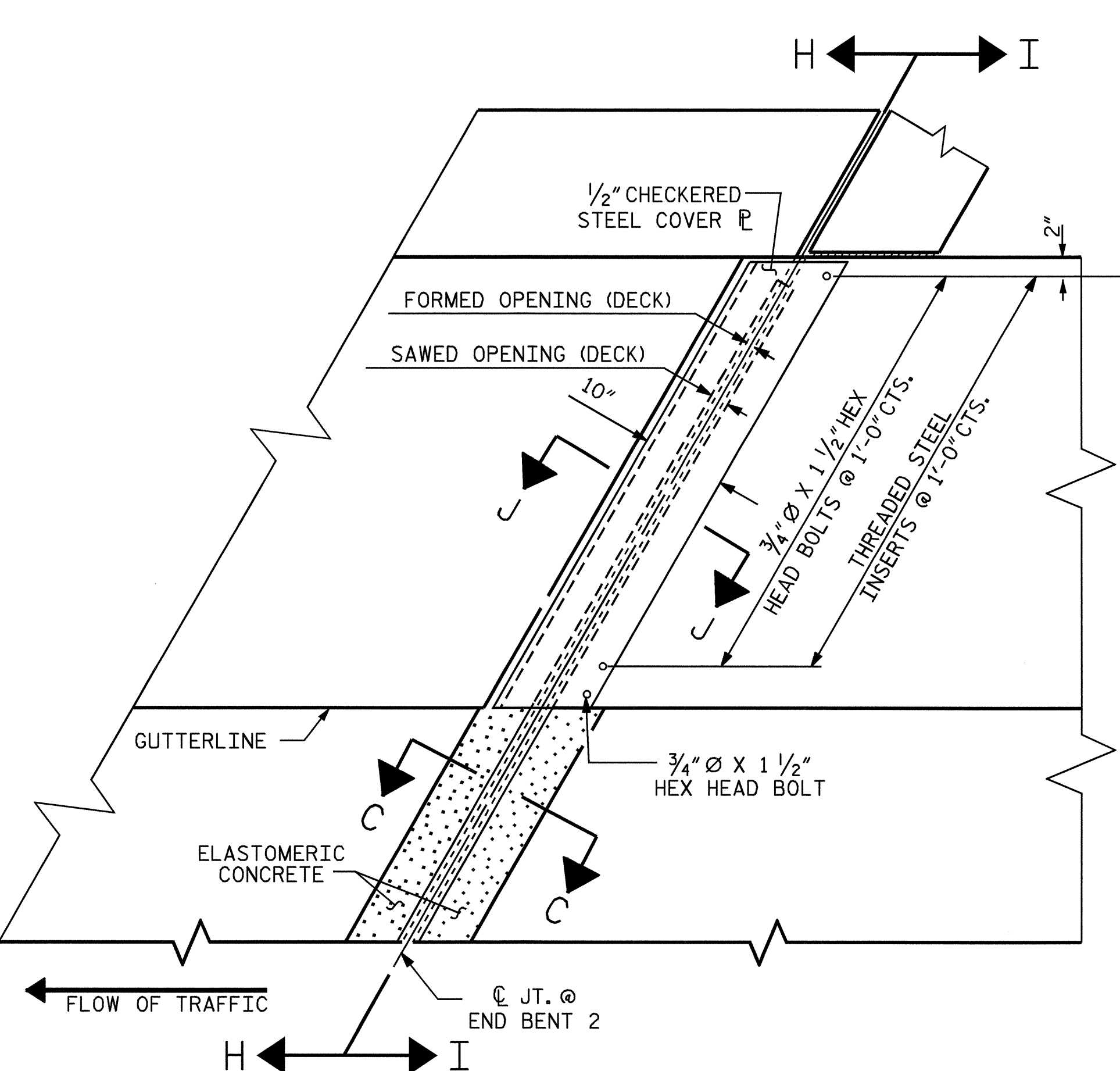
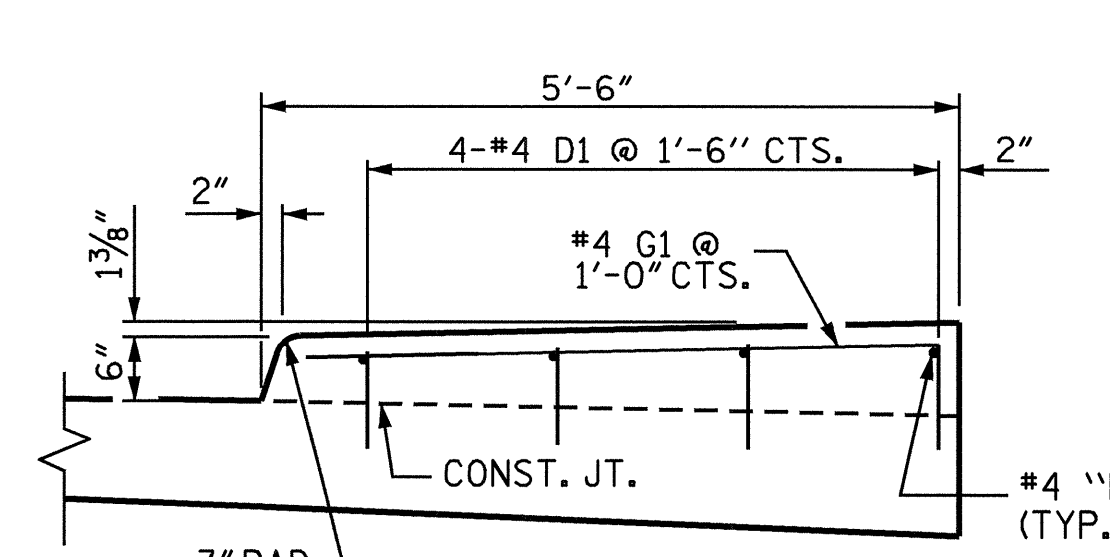


**PLAN**  
\*\* ADHESIVELY ANCHORED



**PLAN VIEW OF EVAZOTE JOINT SEAL @ END BENT FOR SIDEWALK**



**SIDEWALK DETAILS**

ASSEMBLED BY : D. G. ELY DATE : 07/02/04  
 CHECKED BY : K. W. ALFORD DATE : 07/29/04  
 DRAWN BY : FCJ 11/88 REV. 8/16/99 MAB/LES  
 CHECKED BY : ARB 11/88 REV. 10/17/00 RWW/LES  
 REV. 5/7/03 RWW/JTE

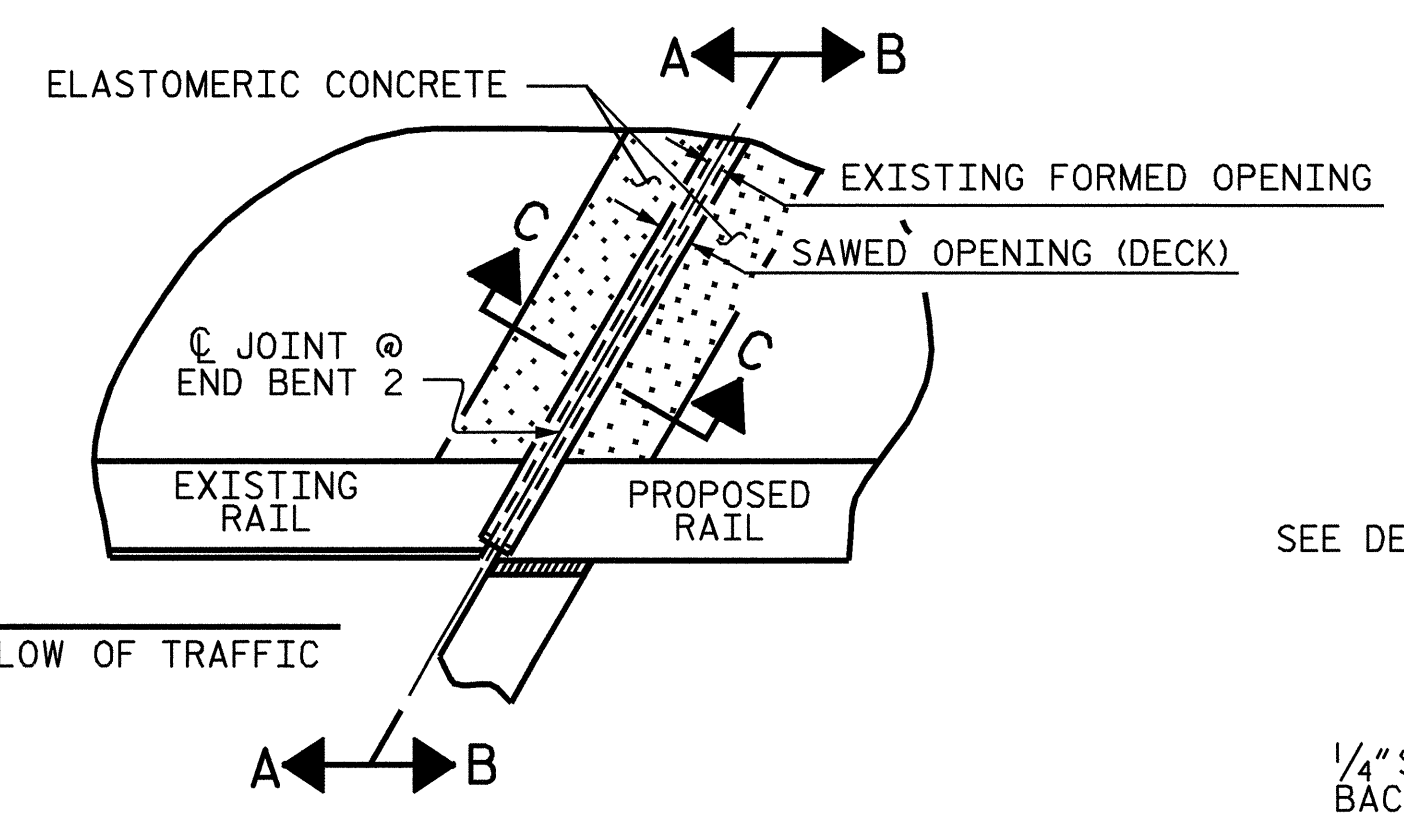
**NOTES**

THE STEEL PLATES SHALL CONFORM TO AASHTO M270 GRADE 36 OR APPROVED EQUAL. AFTER FABRICATION, THE PLATES SHALL BE COMMERCIALY BLAST CLEANED AND COATED WITH A MINIMUM THICKNESS OF 4 MILS (DRY) OF ZINC RICH PAINT IN ACCORDANCE WITH THE STANDARD SPECIFICATIONS. AT THE CONTRACTORS OPTION, THESE SURFACES MAY BE METALLIZED TO A MINIMUM THICKNESS OF 6 MILS. SEE SPECIAL PROVISIONS FOR THERMAL SPRAYED COATINGS (METALLIZATION).

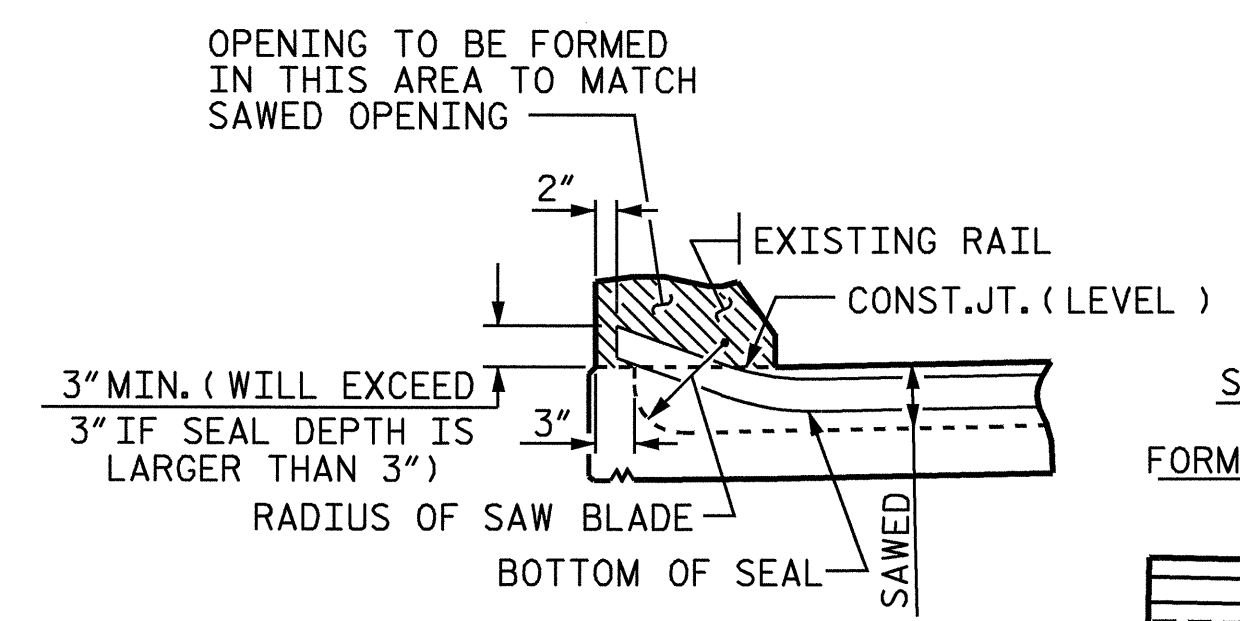
THE 3/4" DIAMETER HEX HEAD BOLTS SHALL CONFORM TO ASTM F593 ALLOY 304 STAINLESS STEEL.

NO SEPARATE PAYMENT WILL BE MADE FOR FURNISHING AND INSTALLING THE COVER PLATE. THE ENTIRE COST OF THIS WORK SHALL BE INCLUDED IN THE LUMP SUM PRICE FOR REINFORCED CONCRETE DECK SLAB.

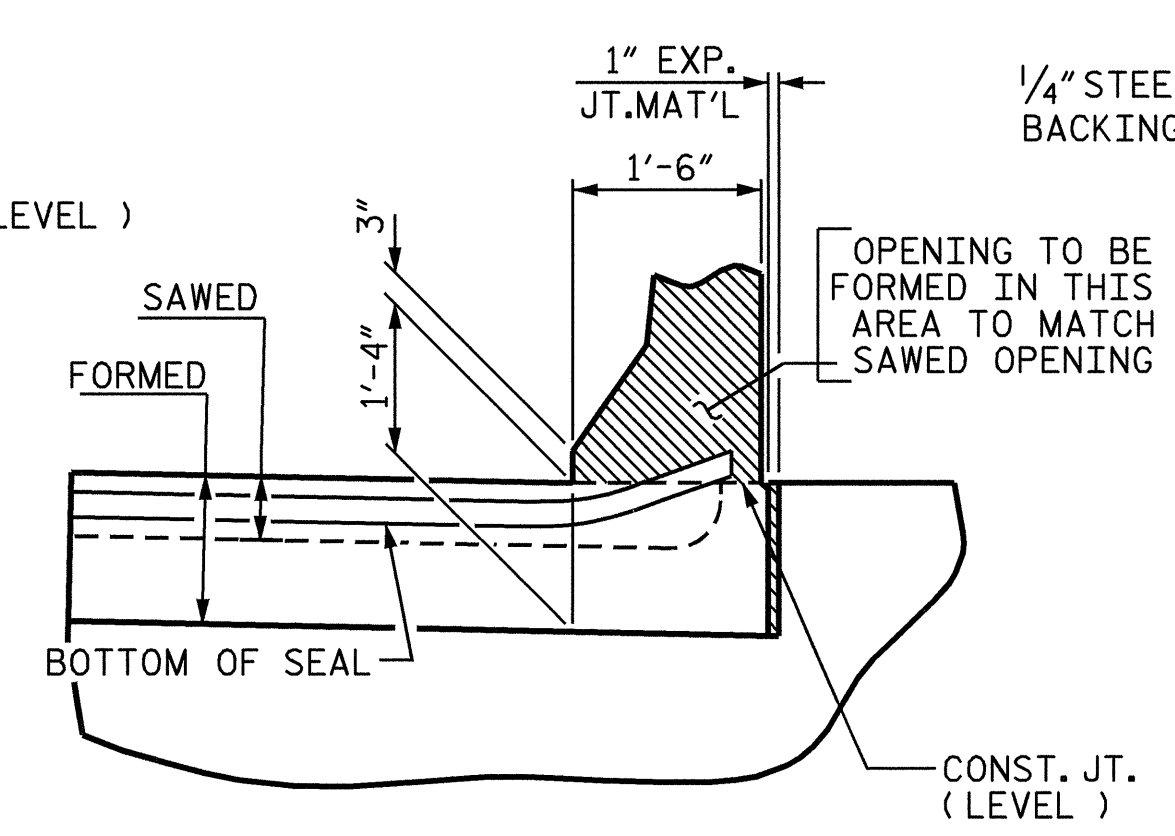
THE JOINT IN THE DECK SHALL BE SAWS PRIOR TO THE CASTING OF THE SIDEWALK.



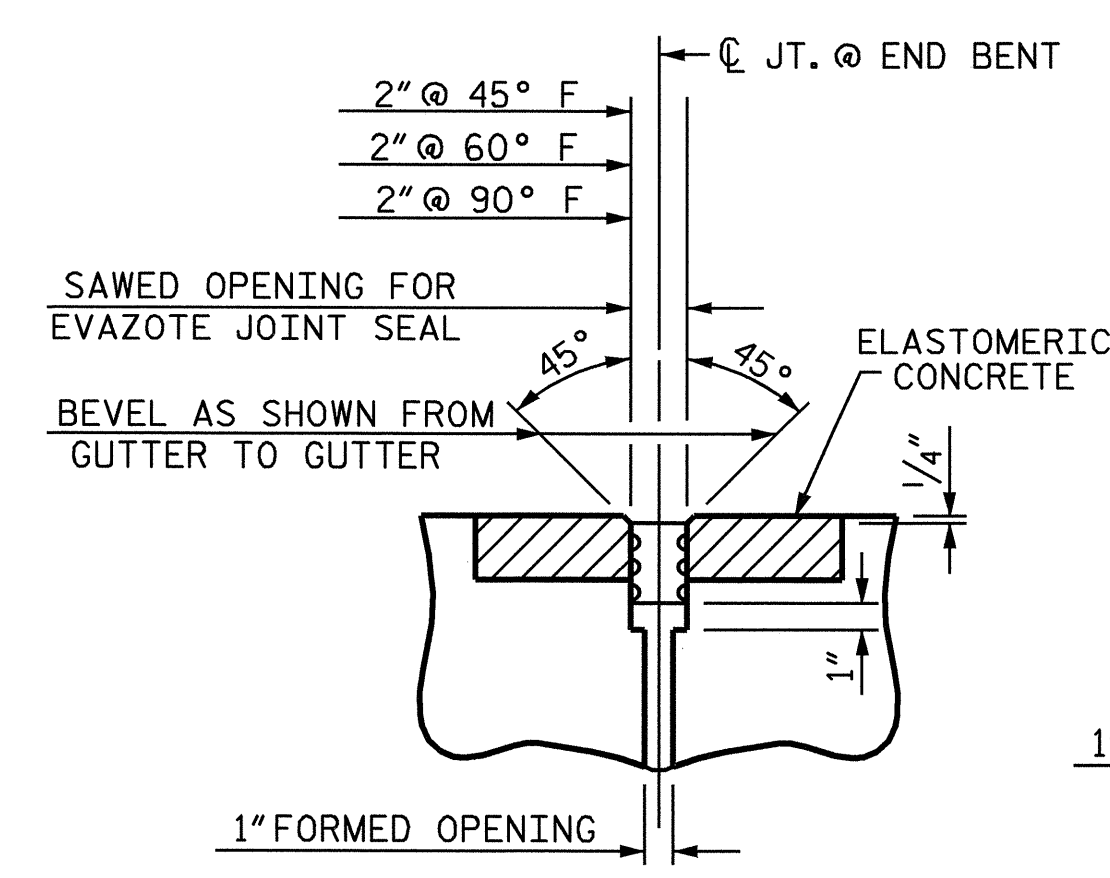
**PLAN VIEW OF EVAZOTE JOINT SEAL @ END BENT FOR BARRIER RAIL**



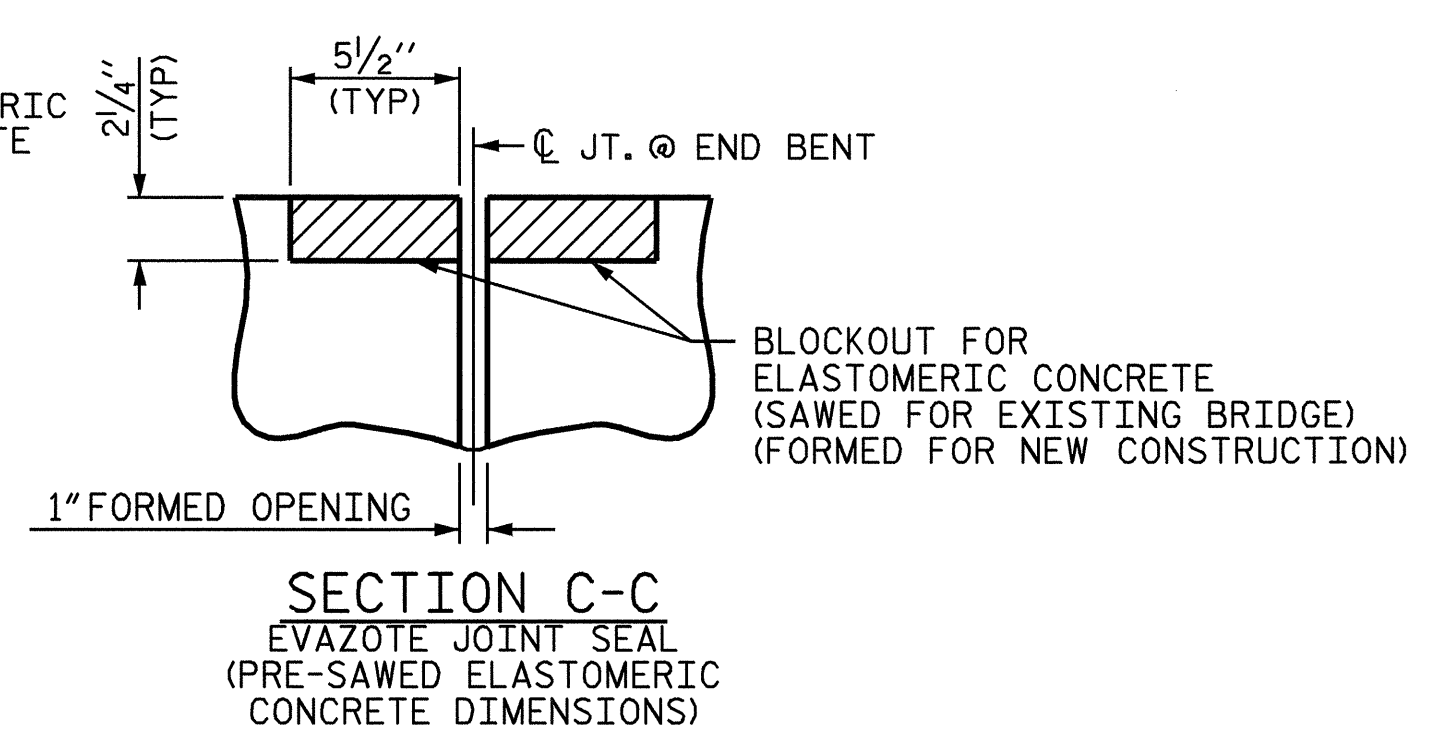
**SECTION A-A**



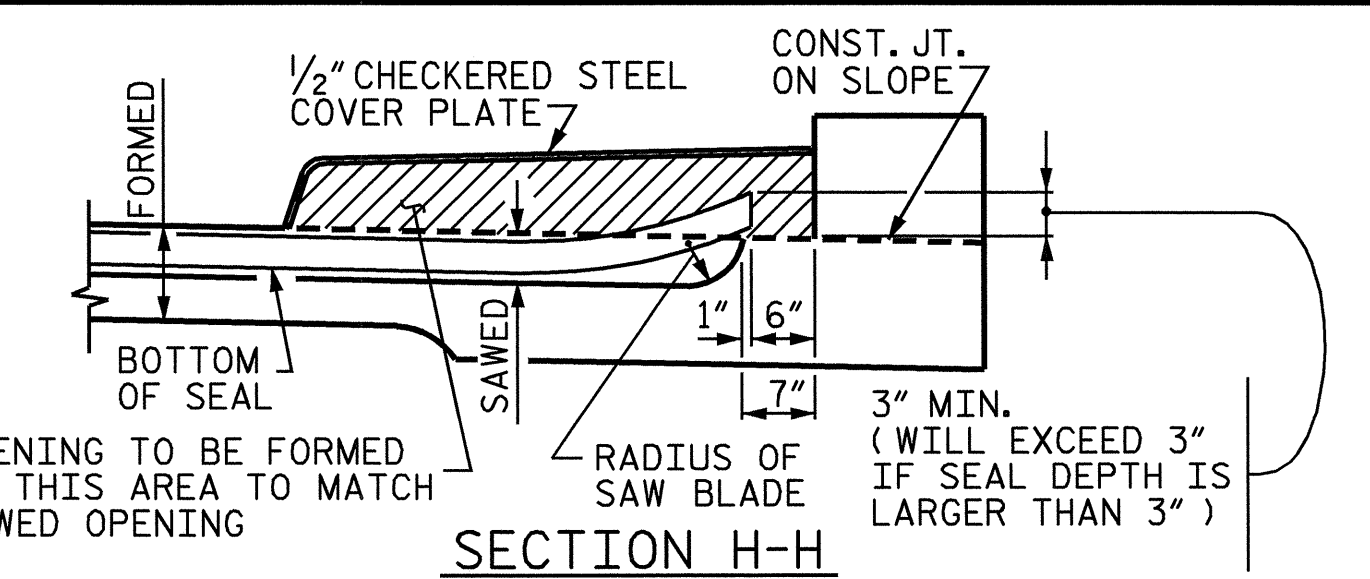
**SECTION B-B**



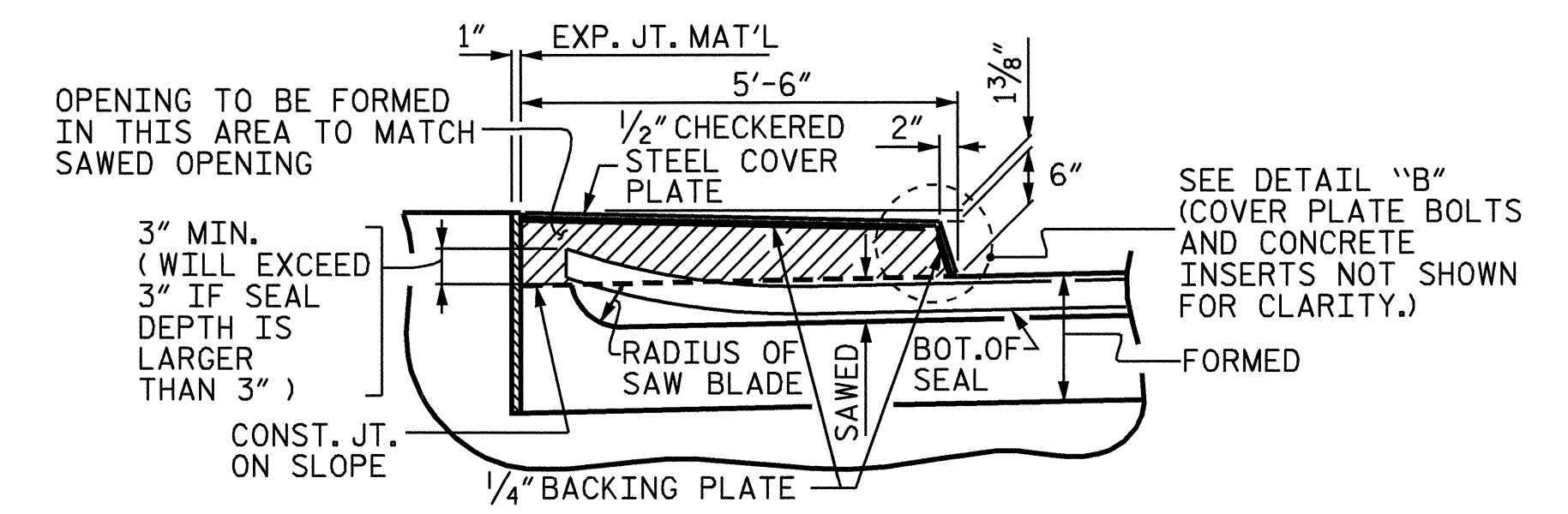
**SECTION C-C EVAZOTE JOINT SEAL**



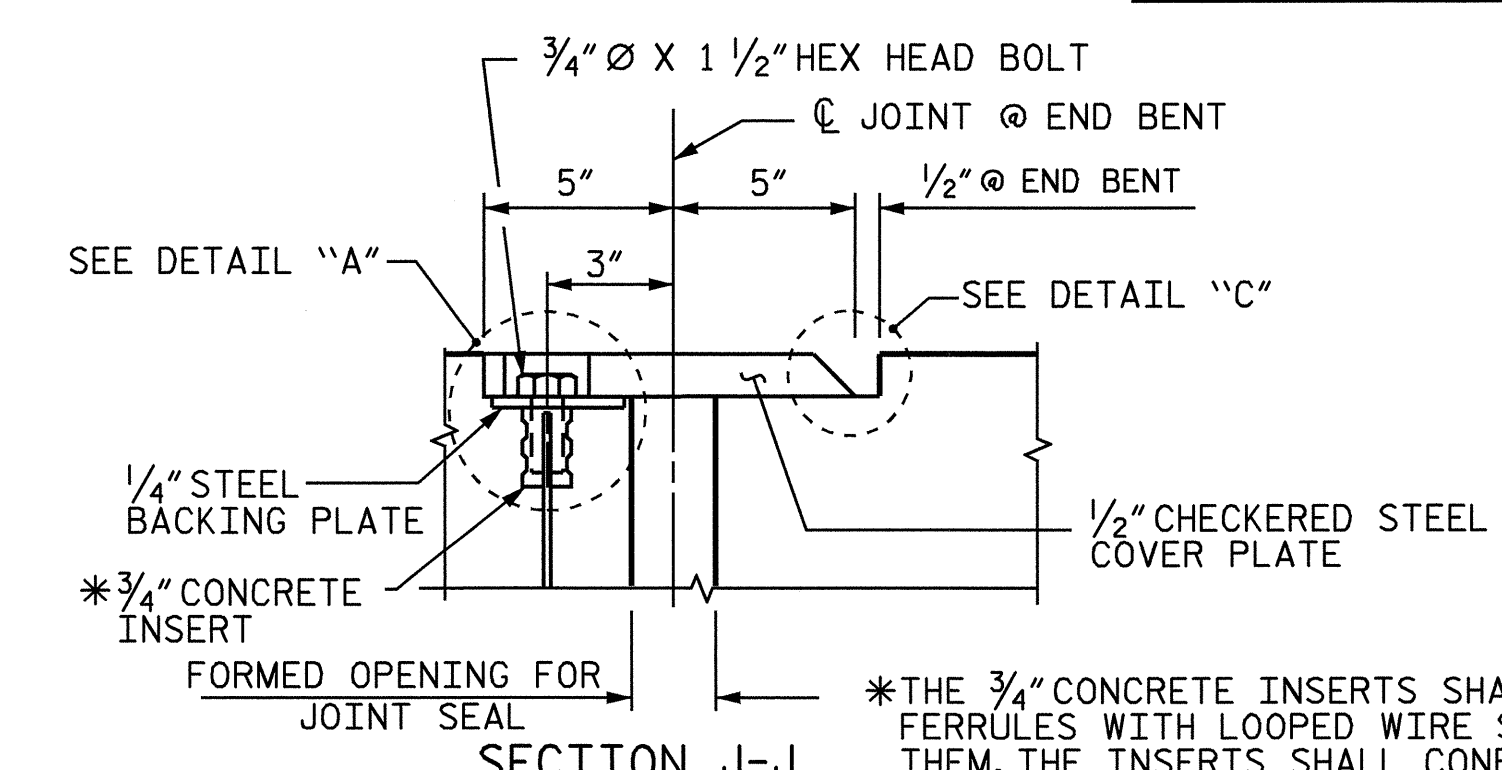
**SECTION C-C EVAZOTE JOINT SEAL (PRE-SAWS ELASTOMERIC CONCRETE DIMENSIONS)**



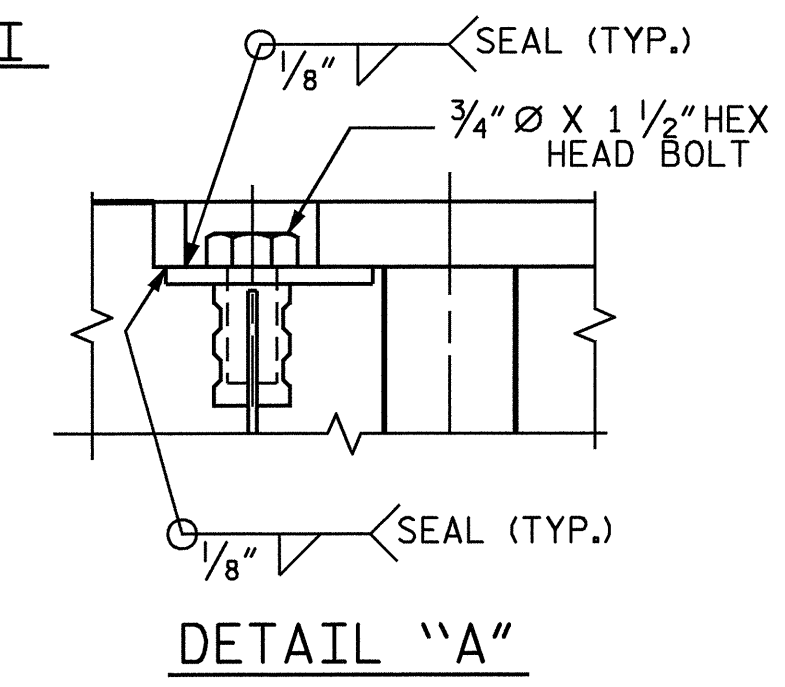
**SECTION H-H**



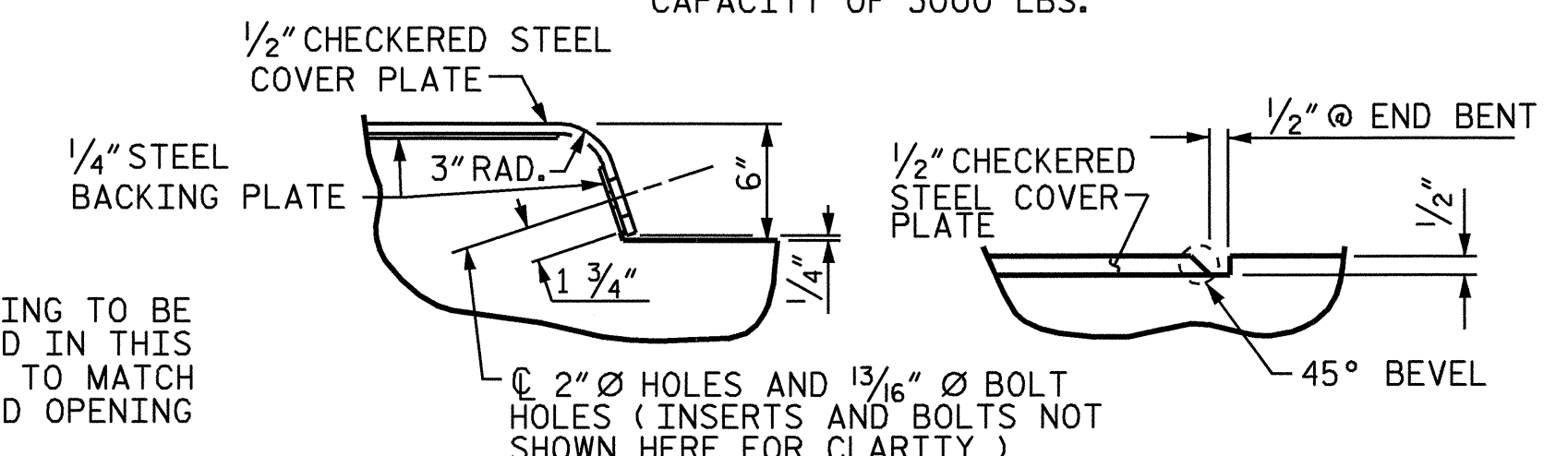
**SECTION I-I**



**SECTION J-J**



**DETAIL 'A'**



**DETAIL 'B' JOINT SEAL DETAILS @ END BENT (FOR SIDEWALK)**

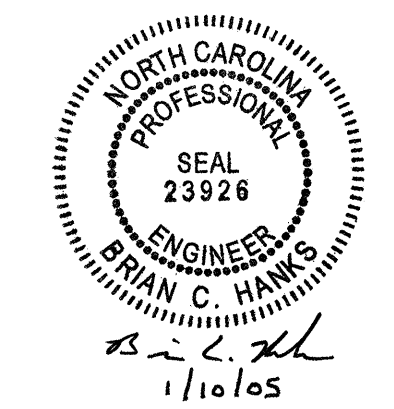
**DETAIL 'C'**

PROJECT NO. U-3837  
 FORSYTH COUNTY  
 STATION: 21+64.07 -L-

SHEET 5 OF 5

STATE OF NORTH CAROLINA  
 DEPARTMENT OF TRANSPORTATION  
 RALEIGH

**BRIDGE APPROACH SLAB DETAILS**



REVISIONS						SHEET NO.
NO.	BY:	DATE:	NO.	BY:	DATE:	S-46
1			3			TOTAL SHEETS
2			4			78