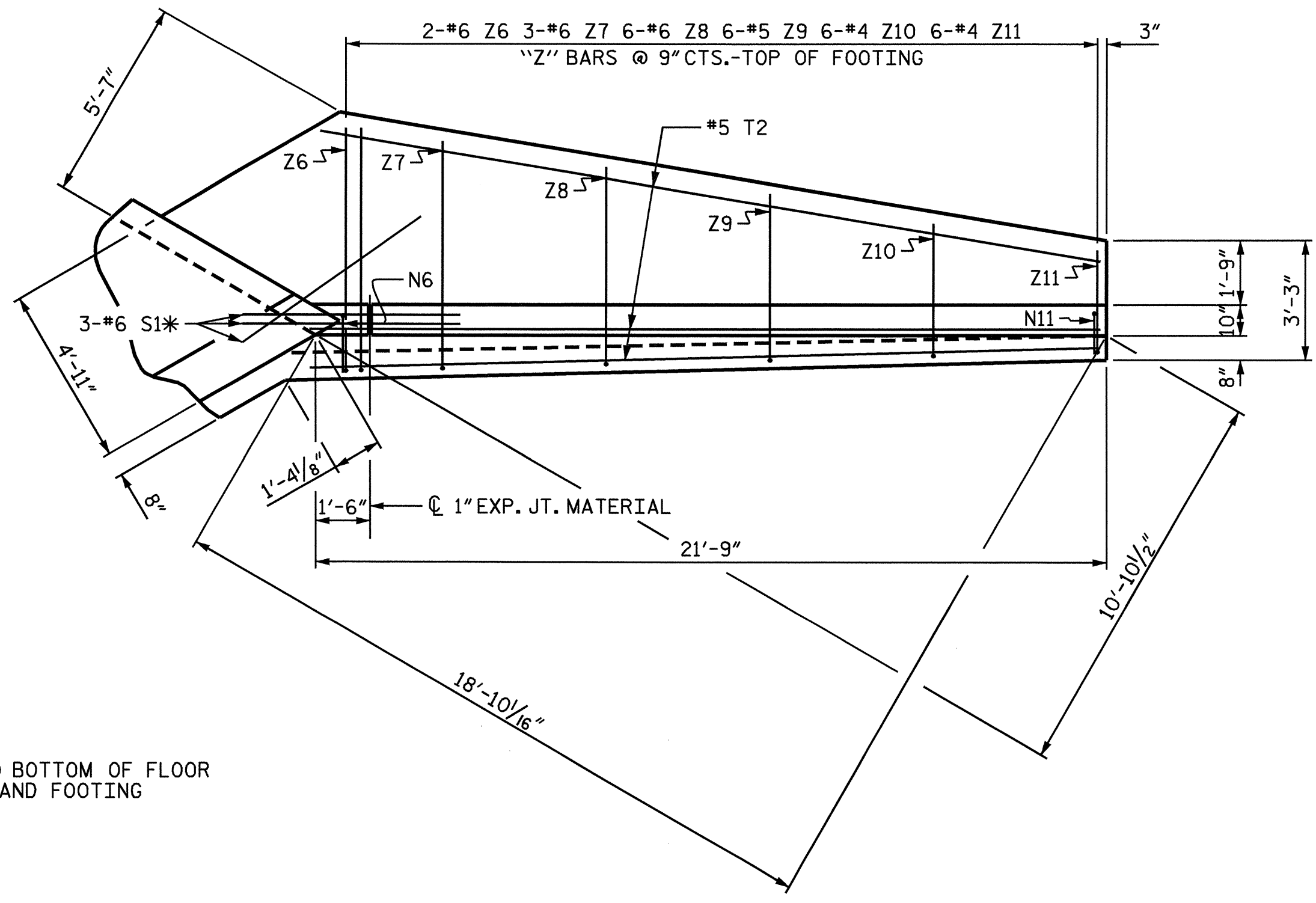
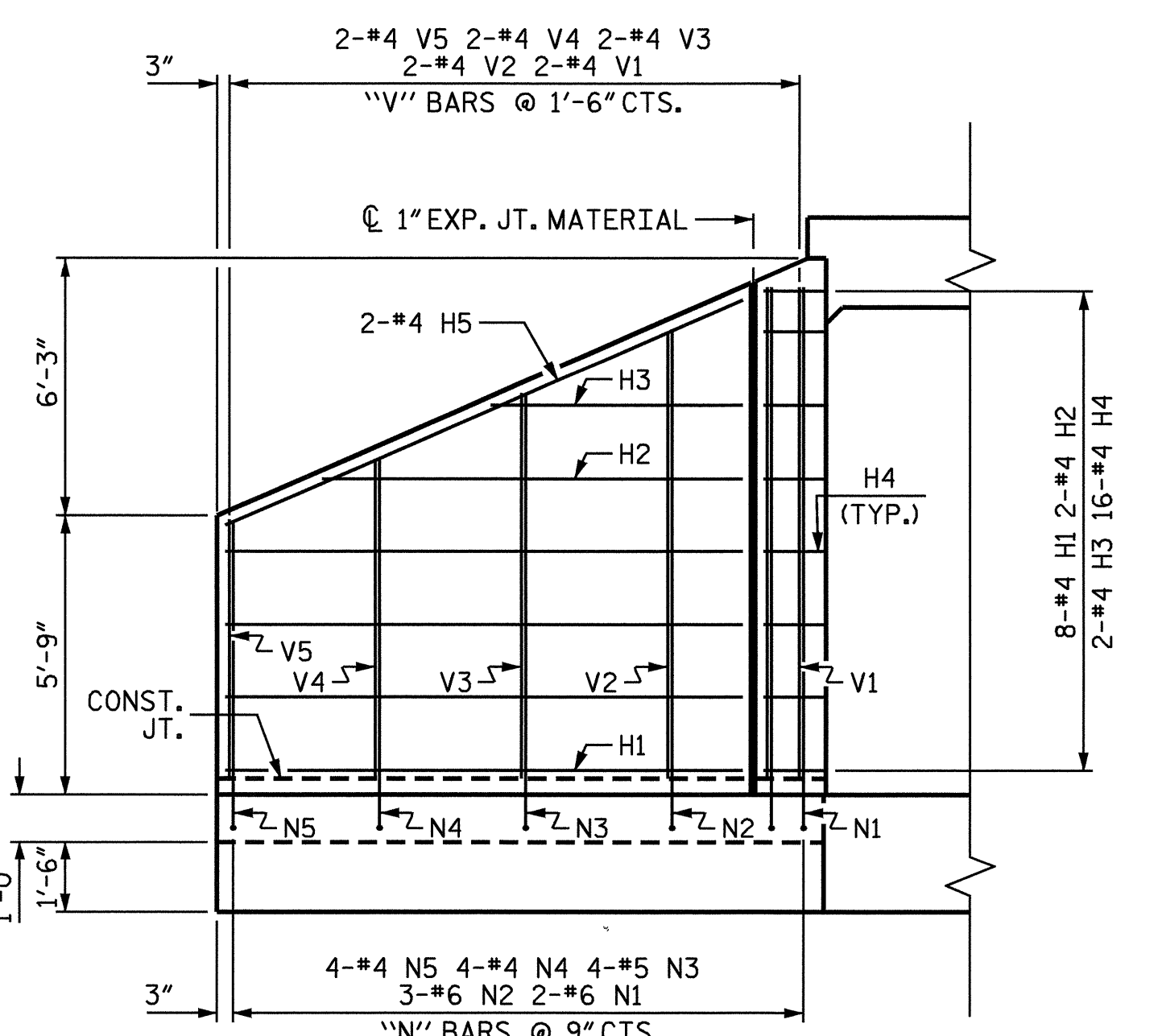


PLAN W2

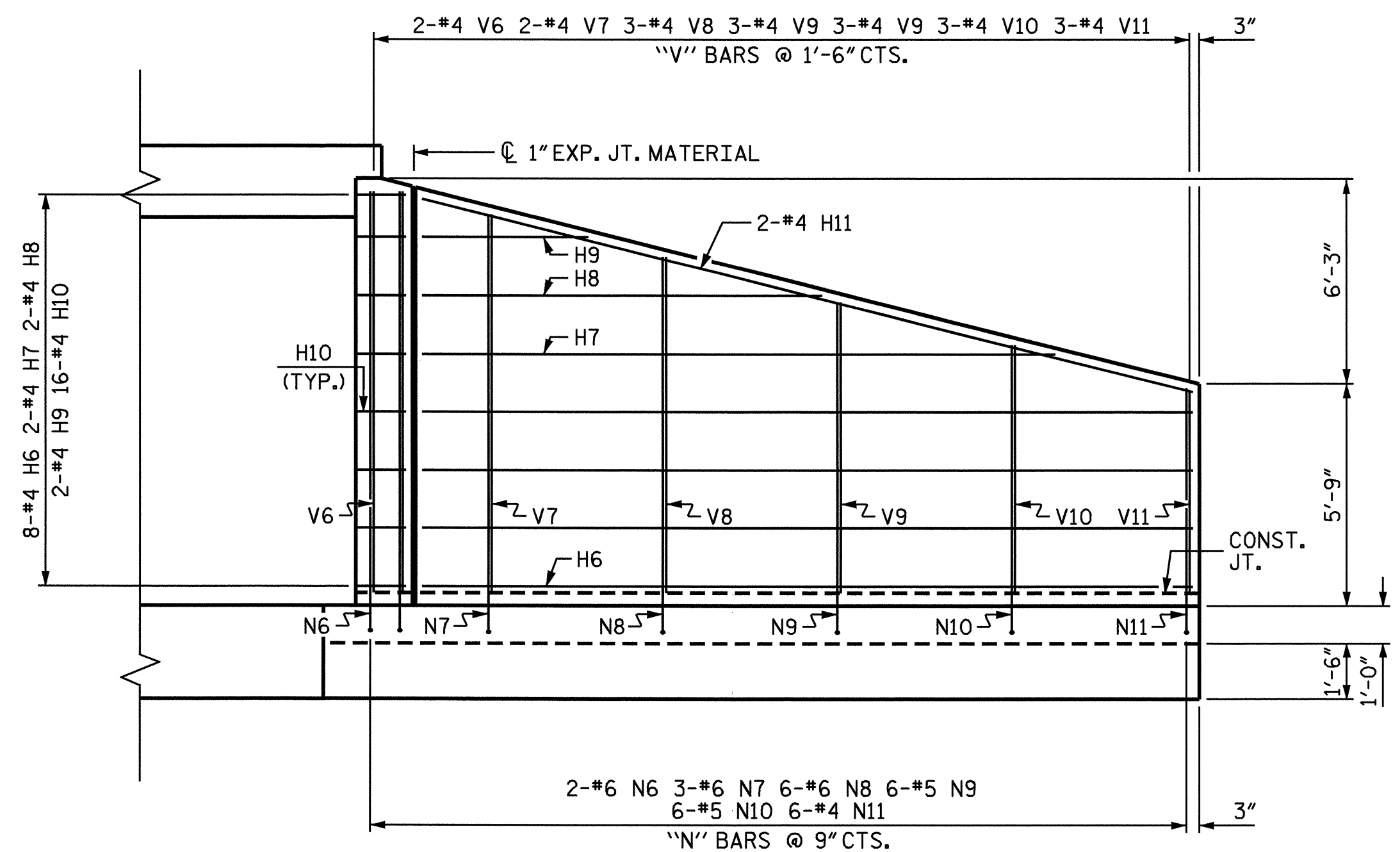


PLAN W1

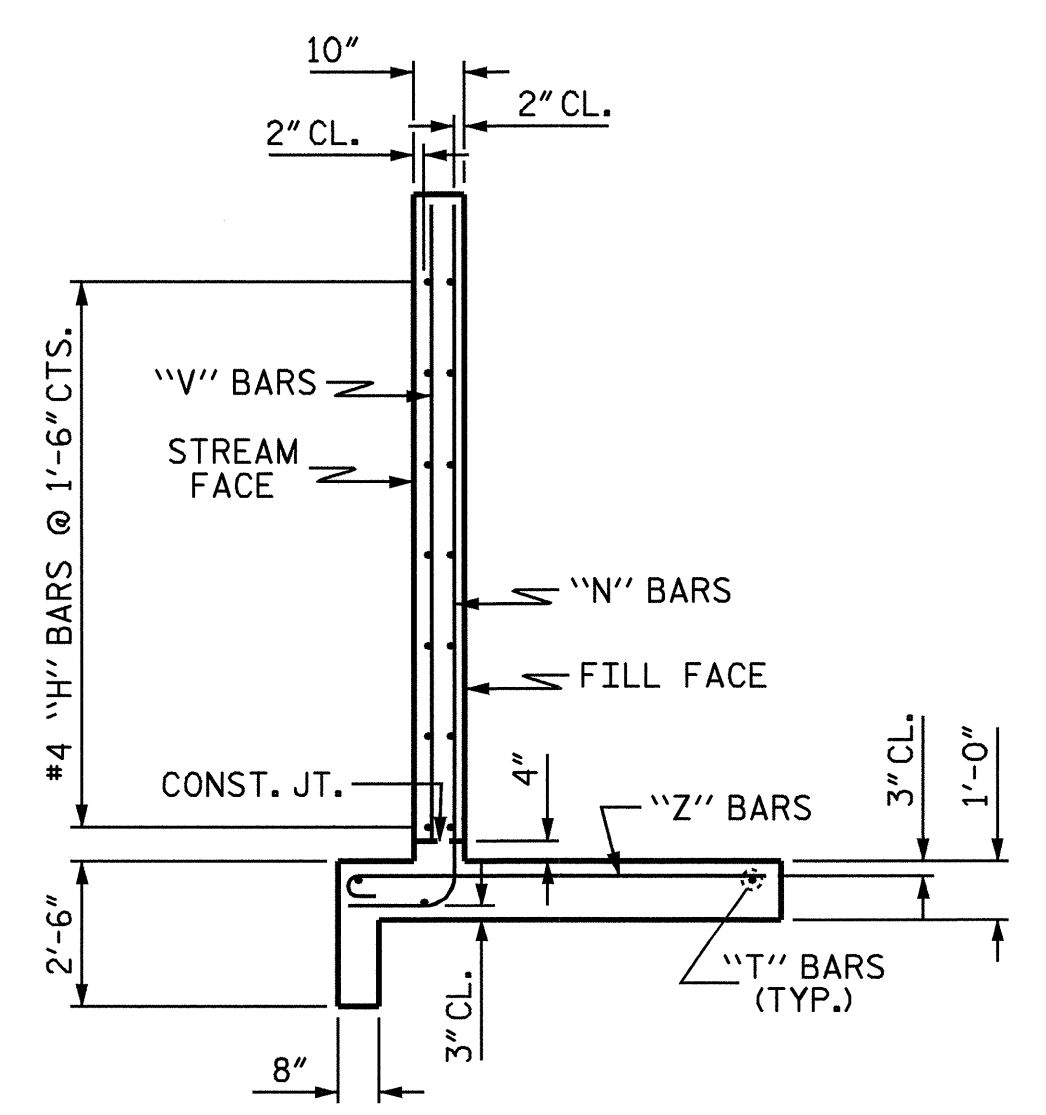
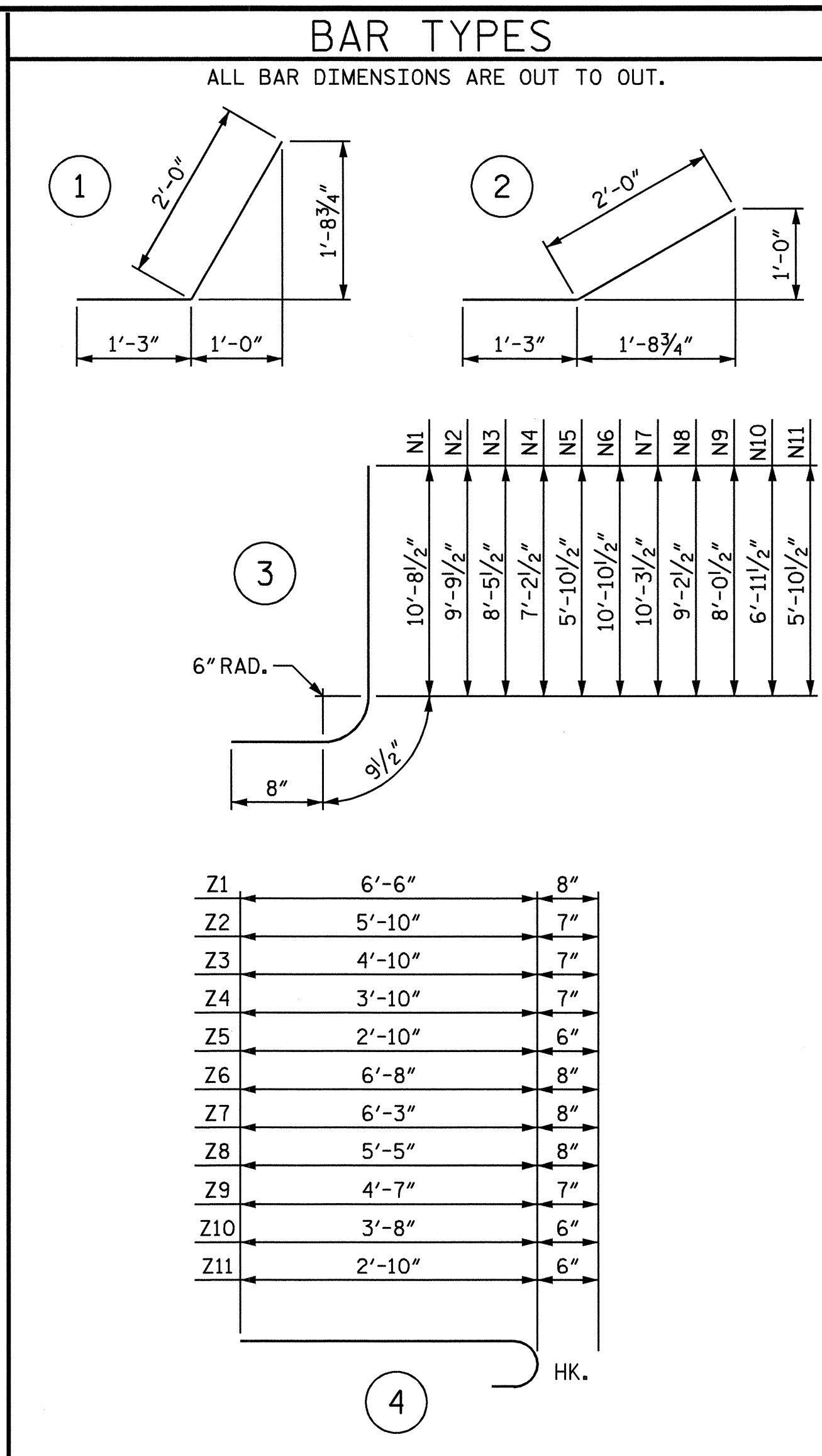
* S1 BARS @ BOTTOM OF FLOOR SLAB AND FOOTING



ELEVATION W2



ELEVATION W1



TYPICAL WING SECTION

BILL OF MATERIAL					
BAR NO.	QTY	SIZE	TYPE	LENGTH	WEIGHT
H1	8	#4	STR	10'-7"	57
H2	2	#4	STR	8'-7"	11
H3	2	#4	STR	5'-2"	7
H4	16	#4	1	3'-3"	35
H5	2	#4	STR	11'-7"	15
H6	8	#4	STR	19'-10"	106
H7	2	#4	STR	16'-4"	22
H8	2	#4	STR	10'-3"	14
H9	2	#4	STR	4'-3"	6
H10	16	#4	2	3'-3"	35
H11	2	#4	STR	20'-5"	27
N1	2	#6	3	12'-2"	37
N2	3	#6	3	11'-3"	51
N3	4	#5	3	9'-11"	41
N4	4	#4	3	8'-8"	23
N5	4	#4	3	7'-4"	20
N6	2	#6	3	12'-4"	37
N7	3	#6	3	11'-9"	53
N8	6	#6	3	10'-8"	96
N9	6	#5	3	9'-6"	59
N10	6	#5	3	8'-5"	53
N11	6	#4	3	7'-4"	29
S1	6	#6	STR	6'-0"	54
T1	3	#5	STR	12'-6"	39
T2	3	#5	STR	21'-9"	68
V1	2	#4	STR	10'-1"	13
V2	2	#4	STR	9'-2"	12
V3	2	#4	STR	7'-11"	11
V4	2	#4	STR	6'-7"	9
V5	2	#4	STR	5'-4"	7
V6	2	#4	STR	10'-4"	14
V7	2	#4	STR	9'-9"	13
V8	3	#4	STR	8'-8"	17
V9	3	#4	STR	7'-6"	15
V10	3	#4	STR	6'-5"	13
V11	3	#4	STR	5'-3"	11
Z1	2	#6	4	7'-2"	22
Z2	3	#5	4	6'-5"	20
Z3	4	#5	4	5'-5"	23
Z4	4	#5	4	4'-5"	18
Z5	4	#4	4	3'-4"	9
Z6	2	#6	4	7'-4"	22
Z7	3	#6	4	6'-11"	31
Z8	6	#6	4	6'-1"	55
Z9	6	#5	4	5'-2"	32
Z10	6	#4	4	4'-2"	17
Z11	6	#4	4	3'-4"	13

REINFORCING STEEL FOR 2 WINGS		1392 LBS
CLASS A CONCRETE		
2 WINGS	18.0	CY
1 HEADWALL	1.5	CY
1 END CURTAIN WALL	1.7	CY
2 EDGE BEAMS	2.3	CY
TOTAL	23.5	CY

PROJECT NO. U-3837
 FORSYTH COUNTY
 STATION: 24+21.46 -L-

SHEET 6 OF 6
 STATE OF NORTH CAROLINA
 DEPARTMENT OF TRANSPORTATION
 RALEIGH
STANDARD WINGS
FOR
CONCRETE BOX CULVERT
 H = 10'-0" SLOPE = 2:1
 60° SKEW

REVISIONS						SHEET NO.
NO.	BY:	DATE:	NO.	BY:	DATE:	C-6
1			3			TOTAL SHEETS
2			4			6

ASSEMBLED BY: William J. Parker DATE: 10/30/03
 CHECKED BY: A.B. NAIK DATE: 11/26/03
 DRAWN BY: CCJ 12/99
 CHECKED BY: RWW 03/00

