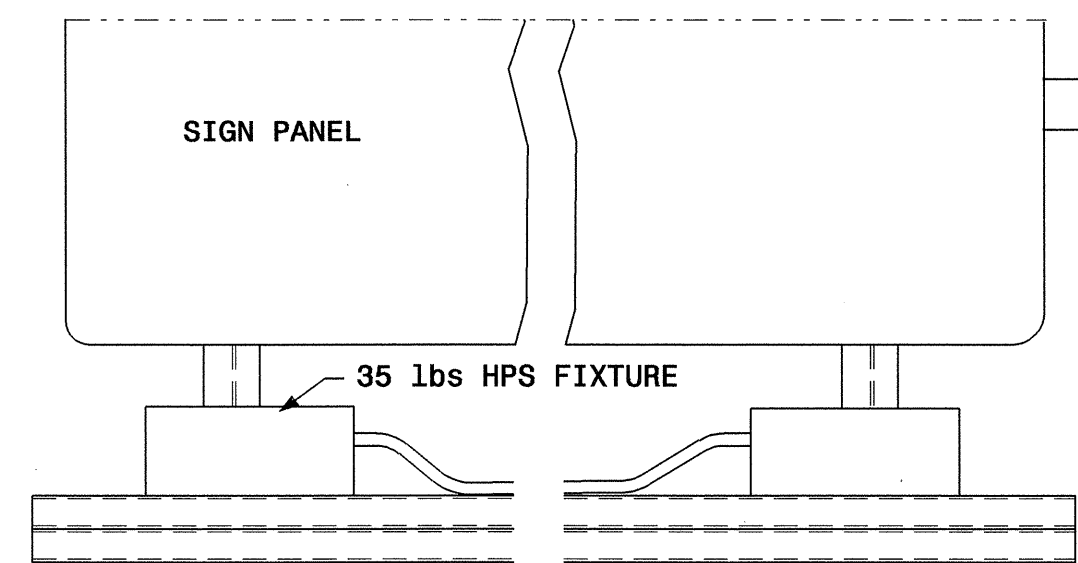
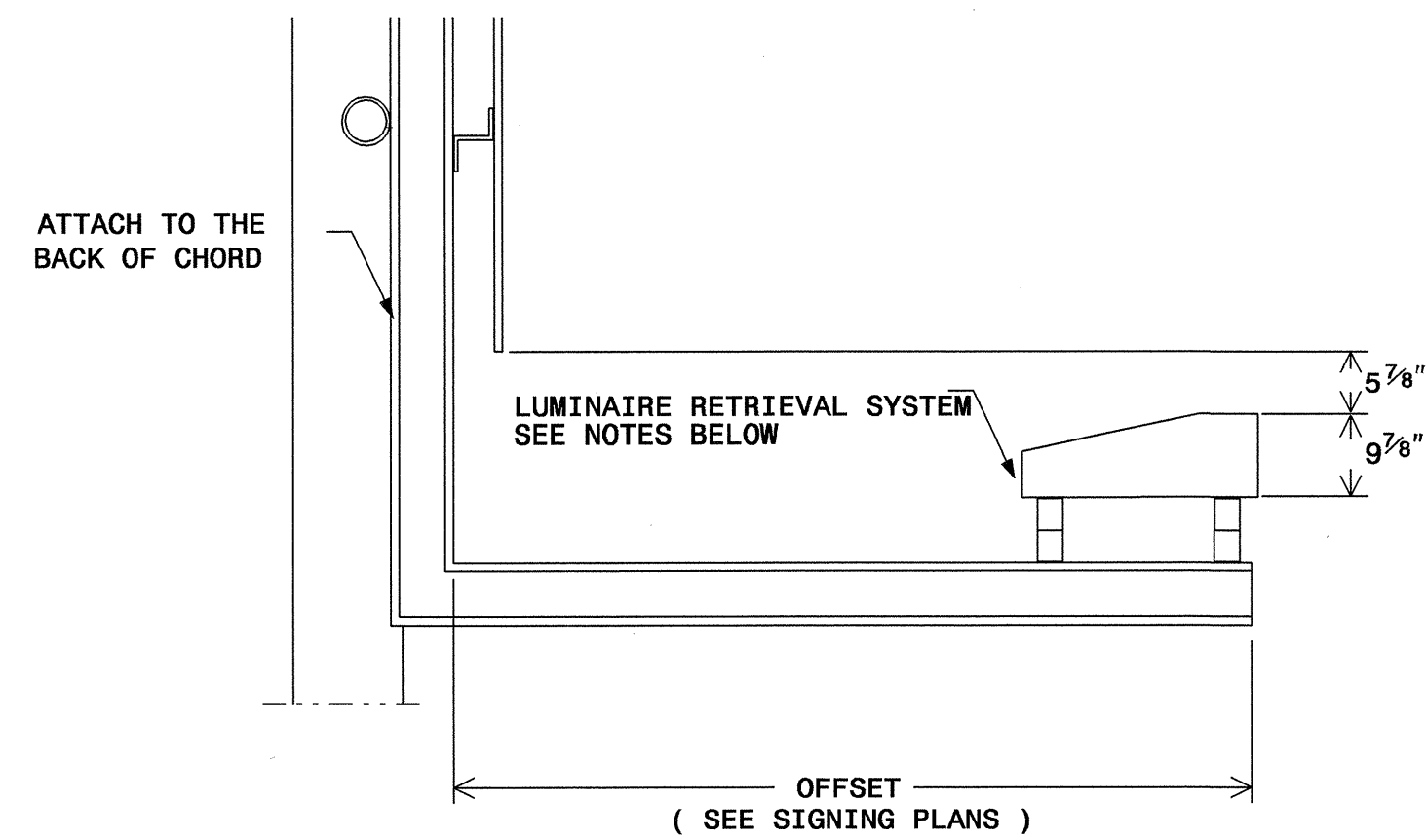


TIP NO.	SHEET NO.	TOTAL SHEETS
U-3837	SIGN-5	
STATE PROJECT NO.		
F.A. PROJ. NO.		



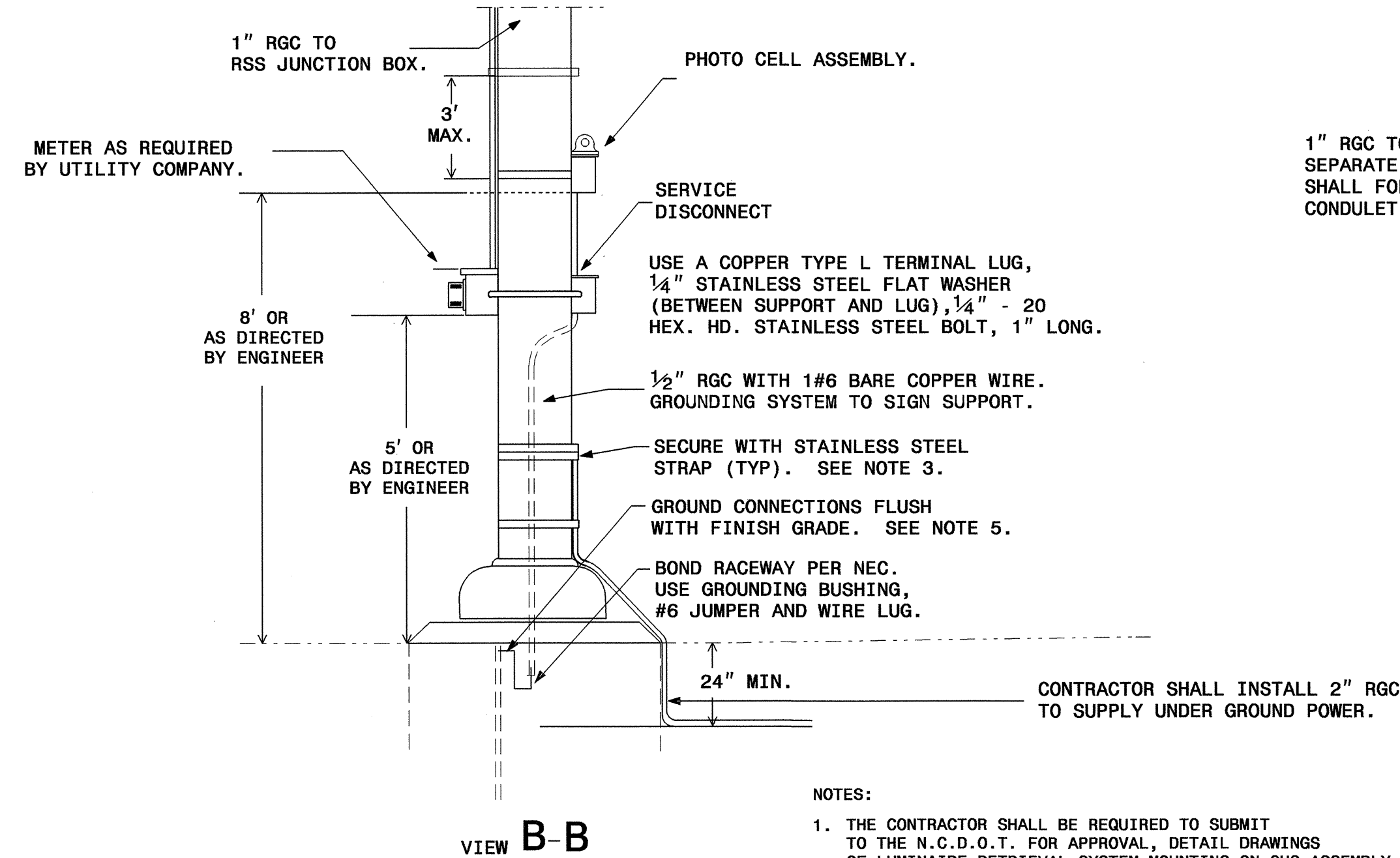
IMPORTANT:

THE POWER SHALL BE DELIVERED UNDER GROUND TO THE SIGN STRUCTURE'S VERTICAL UPRIGHT. NO SERVICE POLE SHALL BE INSTALLED UNLESS SPECIFICALLY APPROVED BY THE ENGINEER.

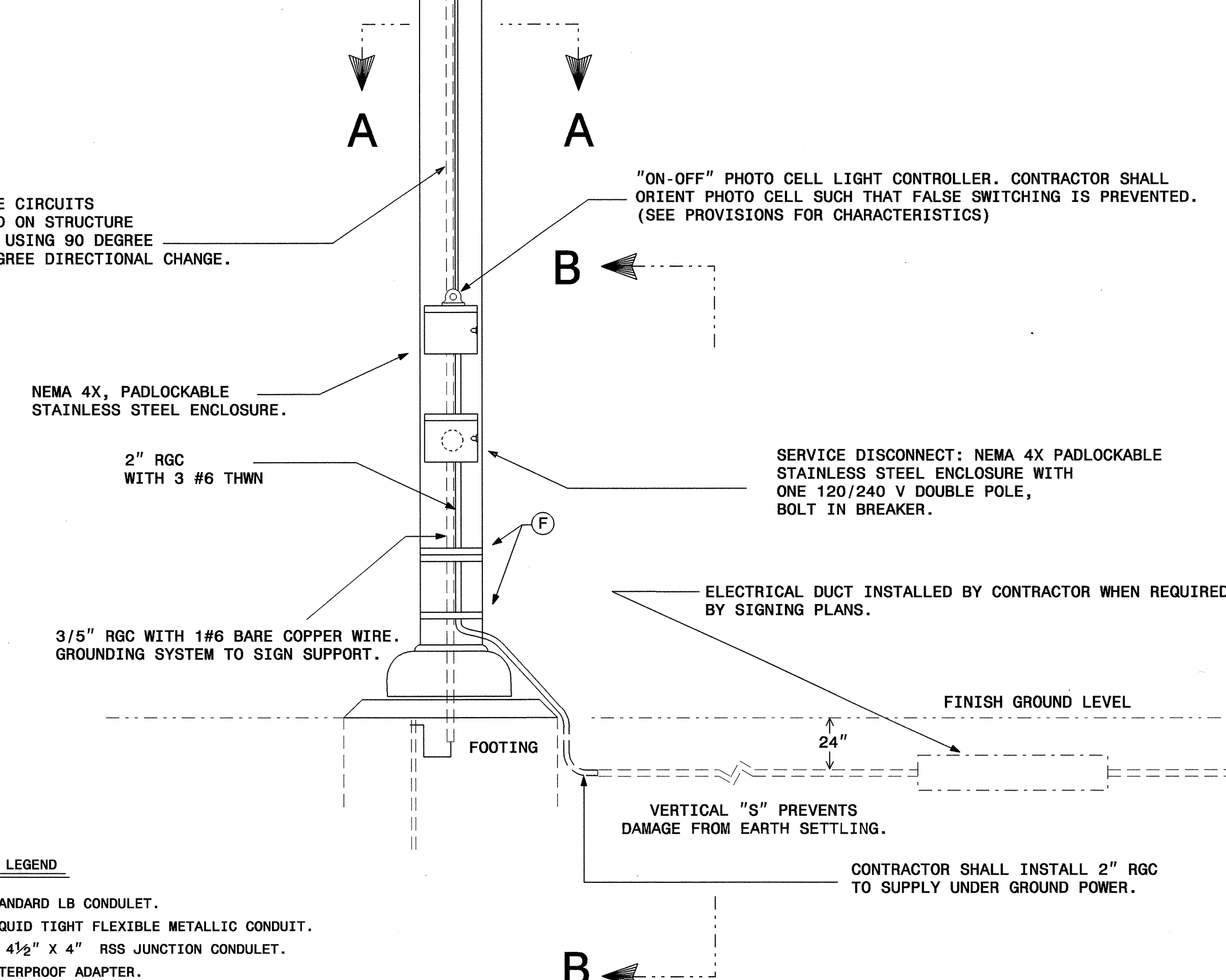
UTILITY COMPANY SHALL NOT INSTALL LINE POLES WITHIN NCDOT RIGHT OF WAY UNLESS APPROVED BY THE ENGINEER.

IF ELECTRICAL SERVICE IS TO BE DELIVERED OVERHEAD:

- * WEATHER HEAD TO BE INSTALLED 13' MINIMUM ABOVE GROUND LINE.
- * EYE BOLT OR EYE ATTACHMENT TO BE INSTALLED WITH STAINLESS STEEL STRAPS 12" ABOVE WEATHERHEAD FOR OVERHEAD SERVICE CONDUCTOR ATTACHMENT (NO DRILLING ALLOWED)



1" RGC TO RSS JUNCTION BOX WHERE CIRCUITS SEPARATE. ALL CONDUIT INSTALLED ON STRUCTURE SHALL FOLLOW STRUCTURAL MEMBERS USING 90 DEGREE CONDULET FITTINGS AT EACH 90 DEGREE DIRECTIONAL CHANGE.



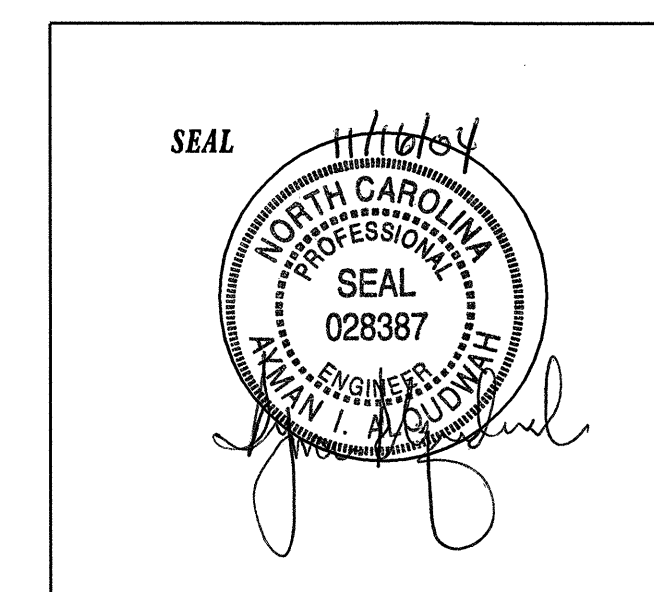
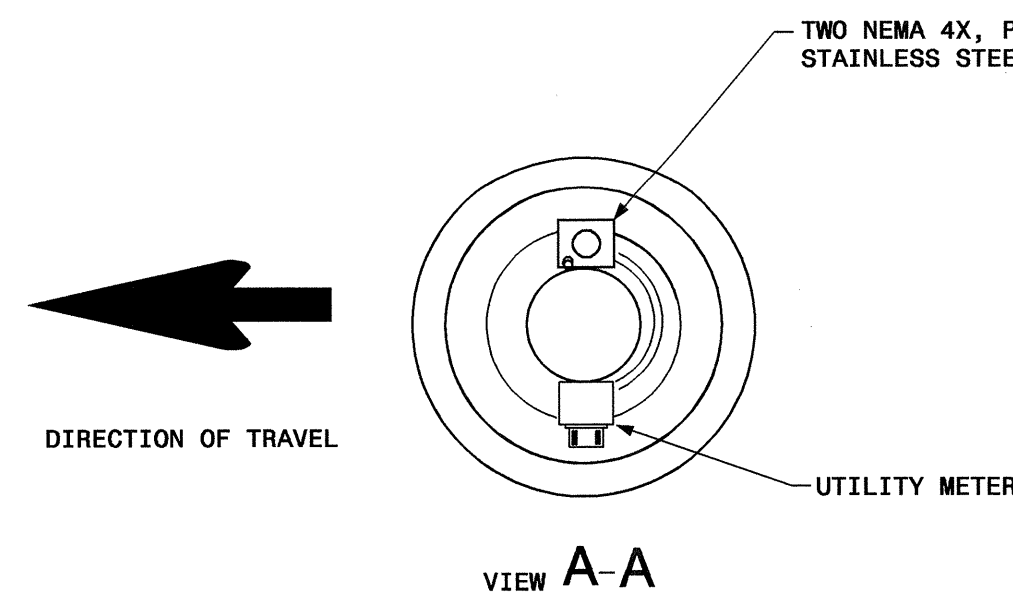
SERVICE DISCONNECT: NEMA 4X PADLOCKABLE STAINLESS STEEL ENCLOSURE WITH ONE 120/240 V DOUBLE POLE, BOLT IN BREAKER.

NOTES:

1. THE CONTRACTOR SHALL BE REQUIRED TO SUBMIT TO THE N.C.D.O.T. FOR APPROVAL, DETAIL DRAWINGS OF LUMINAIRE RETRIEVAL SYSTEM MOUNTING ON OHS ASSEMBLY.
2. CAULK ALL ENDS OF CONDUIT UNDERGROUND WITH A CAULKING COMPOUND APPROVED BY THE ENGINEER.
3. STRAPS SHALL BE STAINLESS STEEL MATERIAL UNLESS OTHERWISE SPECIFIED.
4. ALL JUNCTION BOXES AND CONDULETS SHALL BE WATER TIGHT.
5. ALL GROUNDING ELECTRODES SHALL BE 10' LONG AND 5/8" IN DIAMETER COPPER CLAD STEEL RODS DRIVEN A MINIMUM DEPTH OF 36" INTO UNDISTURBED EARTH.
6. TEST GROUNDING SYSTEM USING AN APPROVED METHOD. SYSTEM SHOULD MEASURE LESS THAN TWENTY (20) OHMS. IF THE RESISTANCE MEASUREMENT IS GREATER THAN 20 OHMS, ADDITIONAL GROUND RODS SHALL BE INSTALLED AS DIRECTED BY THE ENGINEER TO FULFILL THIS REQUIREMENT.
7. ALL UNDERGROUND BONDING OF GROUNDING ELECTRODES AND CONDUCTORS SHALL BE BY AN EXOTHERMIC WELDING PROCESS (CADWELD OR EQUIVALENT).
8. ALL ASSEMBLIES AND COMPONENTS SHALL BE UL APPROVED. INSTALLATION SHALL MEET NEC REQUIREMENTS AND ALL APPROVED STATE AND LOCAL CODES.
9. THE CONTRACTOR SHALL USE LUMINAIRE RETRIEVAL SYSTEM ON ALL OVERHEAD STRUCTURES. WALKWAY AND HANDRAIL IS NOT REQUIRED.
10. INSTALLATION OF LUMINAIRE RETRIEVAL SYSTEM SHALL ALLOW LUMINAIRE MAINTENANCE FROM THE SHOULDER WITHOUT THE NEED FOR LANE CLOSURE. THE DRIVE HANDLE OF THE LUMINAIRE RETRIEVAL SYSTEM SHALL BE LOCATED A MINIMUM OF 0.92M (3') FROM THE RIGHT EDGE OF THE SHOULDER AWAY FROM THE ROADWAY TRAFFIC.
11. THE CONTRACTOR SHALL ENSURE THAT COORDINATION IS ESTABLISHED BETWEEN THE OHS ASSEMBLY AND LUMINAIRE RETRIEVAL SYSTEM FABRICATORS SO THAT A FULLY FUNCTIONAL SIGN AND LIGHTING SYSTEM IS INSTALLED. THE CONTRACTOR SHALL BE FULLY RESPONSIBLE FOR ANY OHS ASSEMBLY AND LUMINAIRE RETRIEVAL SYSTEM INCOMPATIBILITIES, OR INSTALLATION OF A LIGHTING SYSTEM NOT FUNCTIONING TO ITS INTENDED PURPOSE.

LEGEND

- (A) 3/4" STANDARD LB CONDULET.
- (B) 3/4" LIQUID TIGHT FLEXIBLE METALLIC CONDUIT.
- (C) 4 1/2" X 4 1/2" X 4" RSS JUNCTION CONDULET.
- (D) 3/4" WATERPROOF ADAPTER.
- (E) 3/4" RGC
- (F) STAINLESS STEEL STRAPS.



LIGHTING SYSTEM FOR OVERHEAD SIGN ASSEMBLY "A" (SHEET 1 OF 2)

SCALE	NONE	N. C. DEPARTMENT OF TRANSPORTATION DIVISION OF HIGHWAYS TRAFFIC ENGINEERING BRANCH	REVISIONS
DATE	09-13-04		
SIGNING TECHNICIAN			
SIGNING ELECTRICAL ENG	M. HOVOUS		
SIGNING PROJECT ENG	A. ALQUDWAH		