







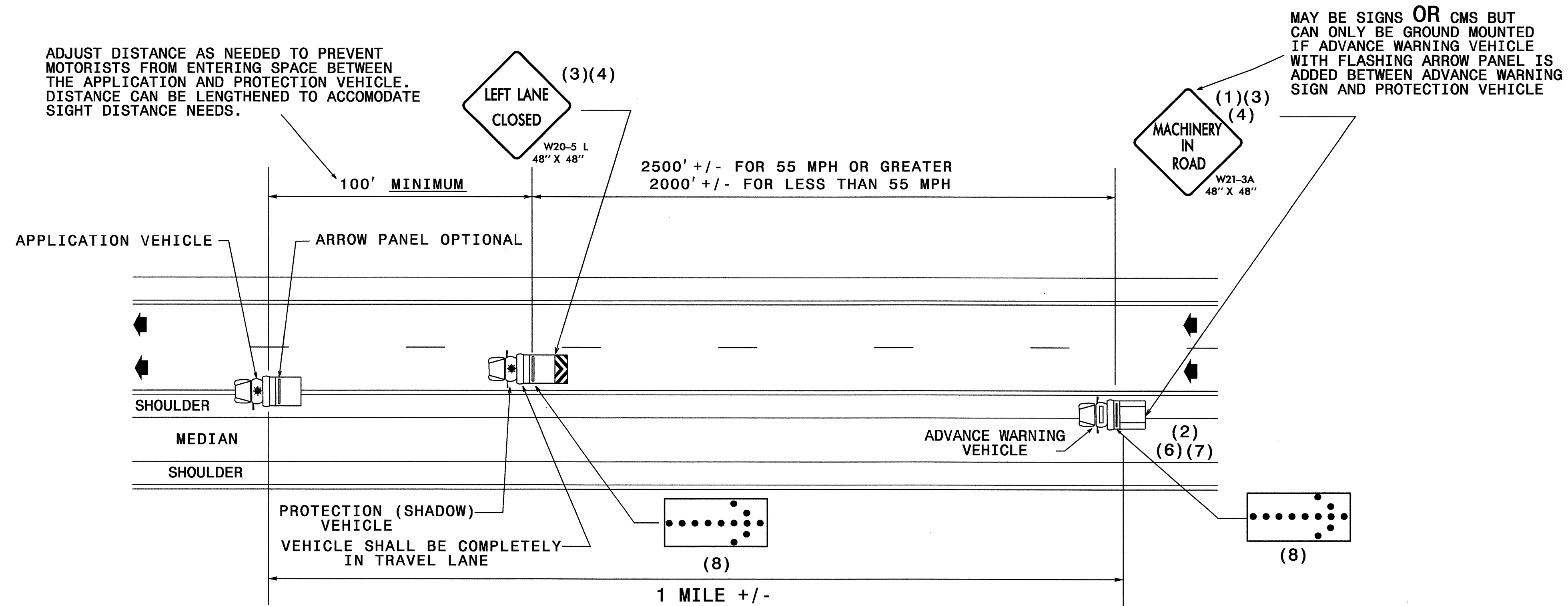
### GENERAL NOTES

- (1) THE FOLLOWING OPTIONS MAY BE USED AS THE FIRST ADVANCE WARNING THE MOTORISTS SEES:
  - A. TRUCK MOUNTED ADVANCE WARNING SIGNS
  - B. MOVING CHANGEABLE MESSAGE SIGN (CMS)
- (2) TOTAL DISTANCE BETWEEN FIRST AND LAST VEHICLE IN CARAVAN SHOULD BE APPROXIMATELY ONE (1) MILE IN LENGTH.
- (3) SIGNS ON VEHICLES SHOULD BE MOUNTED A MINIMUM OF ONE (1) FOOT FROM THE GROUND AND SHOULD NOT BLOCK THE MOTORIST'S SIGHT OF THE FLASHING ARROW PANEL AND/OR LIGHT BAR.
- (4) SIGN W20-L SHOULD BE PLACED ON BACK OF PROTECTION VEHICLE AND SIGN W21-3BSP ON BACK OF ADVANCE WARNING VEHICLE IN MULTILANE DIVIDED TRAFFIC SO VEHICLES APPROACHING FROM REAR ARE NOTIFIED OF OPERATION.
- (5) RADIO COMMUNICATION BETWEEN VEHICLES IS RECOMMENDED.
- (6) USE A LIGHT BAR OR ROTATING BEACON ON THE ADVANCE WARNING VEHICLES.
- (7) USE OF CMS's ARE OPTIONAL WITH ADVANCED WARNING VEHICLES.
- (8) USE A TYPE "B" FLASHING ARROW PANEL.
 

PANEL TYPE	MIN. SIZE
B	60"X30"

### LEGEND

-  PORTABLE SIGN
-  DIRECTION OF TRAFFIC FLOW
-  APPLICATION VEHICLE WITH ROTATING BEACON
-  PROTECTION VEHICLE WITH TRUCK MOUNTED IMPACT ATTENUATOR (TMIA) AND ROTATING BEACON (SEE ROADWAY STANDARD NO. 1165.01)
-  ADVANCE WARNING VEHICLE i.e. PICKUP TRUCK WITH MOUNTED SIGN
-  FLASHING ARROW PANEL, TYPE "B" APPROPRIATE DIRECTION INDICATED




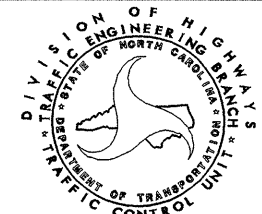
## MOVING OPERATION CARAVAN

(OPERATIONS TRAVELING 3 MPH OR FASTER)

SPRAYING OTHER MULTILANE DIVIDED ROADWAYS  
IN MEDIAN AND ON RIGHT SIDE W/PAVED SHOULDERS LESS THAN 10' WIDE

**DRAWING NUMBER 3**  
IMPLEMENTATION DATE: 07/01/97  
REVISED: 07/29/02

03-JAN-2005 11:06  
\\ets-cctf501\4404\TCP\4404-TCP.dgn  
scatiron AT TETC92274

APPROVED: <i>Chris Watson</i> DATE: 1-3-05	<b>MOVING OPERATION CARAVAN</b>	
	SCALE: NONE	
	DATE: 12/16/04	
	DWG. BY: SPC	
	DESIGN BY: SPC	
REVIEWED BY: BLW	REVISIONS	