

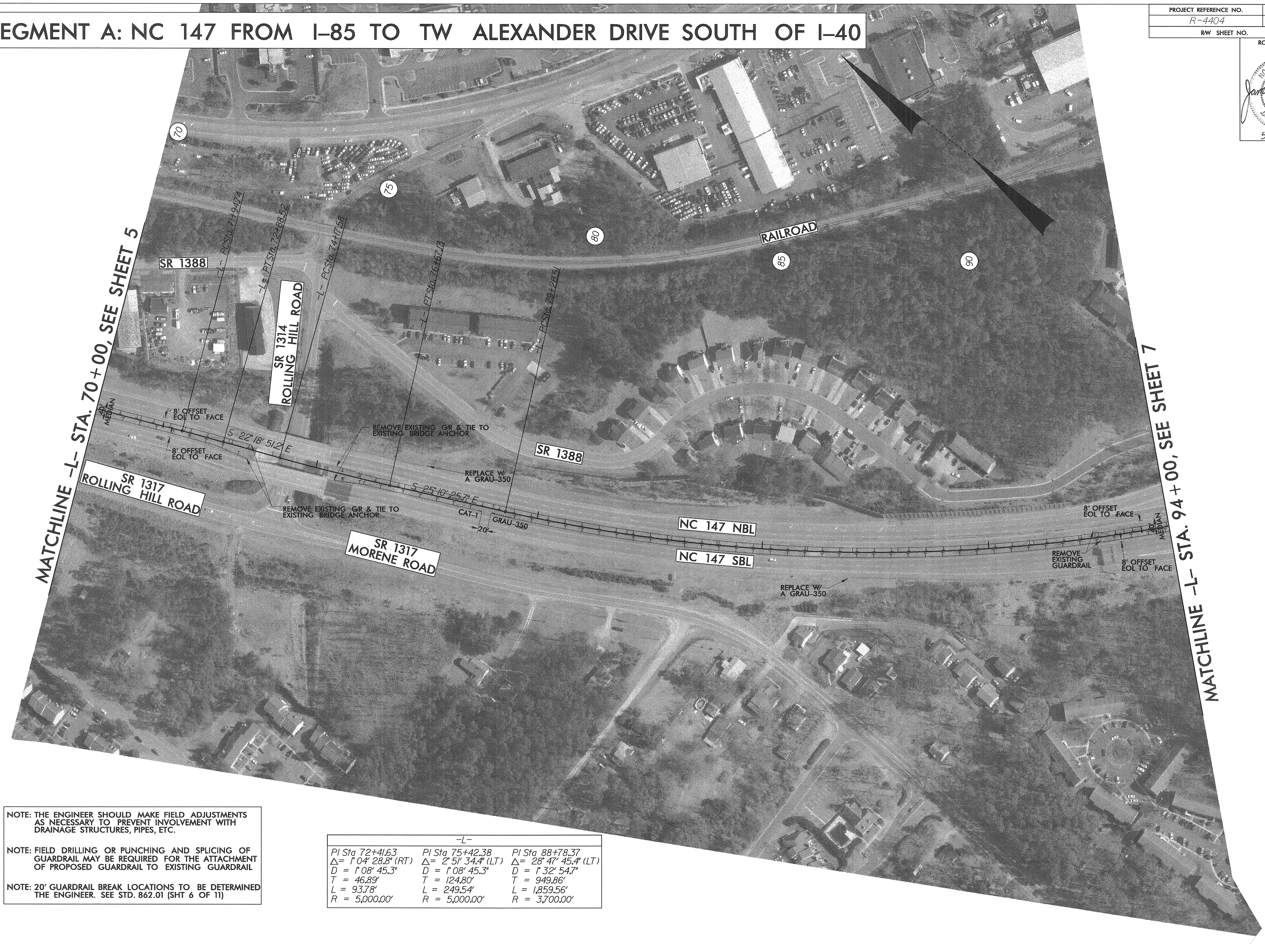
# SEGMENT A: NC 147 FROM I-85 TO TW ALEXANDER DRIVE SOUTH OF I-40

PROJECT REFERENCE NO. R-4404	SHEET NO. 6
RW SHEET NO.	

ROADWAY DESIGN ENGINEER

*James A. Speer*

NORTH CAROLINA PROFESSIONAL ENGINEER  
14571  
JAMES A. SPEER  
5/11/05



NOTE: THE ENGINEER SHOULD MAKE FIELD ADJUSTMENTS AS NECESSARY TO PREVENT INVOLVEMENT WITH DRAINAGE STRUCTURES, PIPES, ETC.

NOTE: FIELD DRILLING OR PUNCHING AND SPLICING OF GUARDRAIL MAY BE REQUIRED FOR THE ATTACHMENT OF PROPOSED GUARDRAIL TO EXISTING GUARDRAIL

NOTE: 20' GUARDRAIL BREAK LOCATIONS TO BE DETERMINED THE ENGINEER. SEE STD. 862.01 (SHT 6 OF 11)

-L-		
PI Sta 72+41.63	PI Sta 75+42.38	PI Sta 88+78.37
$\Delta = 1' 04' 28.8''$ (RT)	$\Delta = 2' 51' 34.4''$ (LT)	$\Delta = 28' 47' 45.4''$ (LT)
D = 1' 08' 45.3"	D = 1' 08' 45.3"	D = 1' 32' 54.7"
T = 46.89'	T = 124.80'	T = 949.86'
L = 93.78'	L = 249.54'	L = 1,859.56'
R = 5,000.00'	R = 5,000.00'	R = 3,700.00'

5/14/05  
 I:\AN-2005\_0802\RD212302\RD4404\_rdy\_psh6.dgn  
 EADouglas